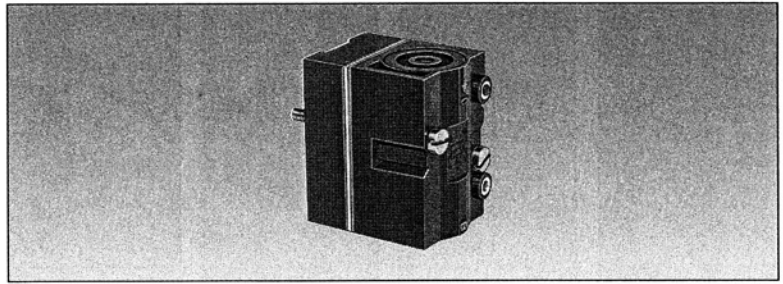


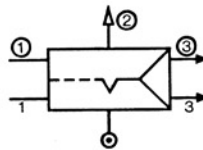
Memory element



Part numbers

Version	81 523 201 With pressure indicator	81 523 601 With pressure indicator and manual override
---------	--	--

Symbol



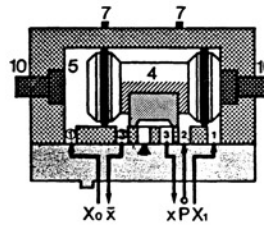
Characteristics

Colour		Black	Black
Operating pressure	bar	2 → 8	2 → 8
Orifice diameter	mm	2.7	2.7
Minimum memory pilot pressure	bar	2.5	2.5
Flow at 6 bars	NI/min	200	200
Connection - On sub-base page 4/14 - 4/15		•	•
Weight	g	90	90

Principle of operation

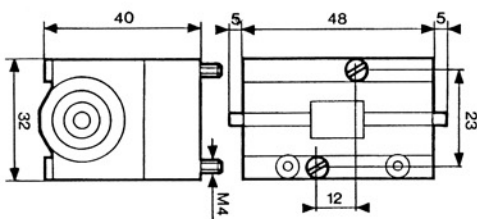
The function is that of a 4/2 valve. The appearance of signal "X1" causes the displacement of the slide valve. The output port "x" is then put under pressure. This state is remembered until the arrival of signal "X0". This signal reverses the slide valve, the output "x" is put under pressure. This state is likewise remembered. The output :

- "x" under pressure indicates that the information in the MEMORY is "X1".
- "x" under pressure indicates that the information in the MEMORY is "X0".

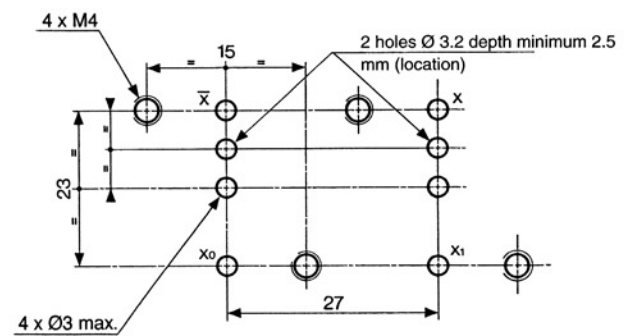


Dimensions

81 523 201 - 81 523 601



Dimensions of logic and memory elements



Viewed from above

Other information	To order, specify :
	<p>Standard products</p> <p>1 Part number Example : Memory element - 81 523 201</p>