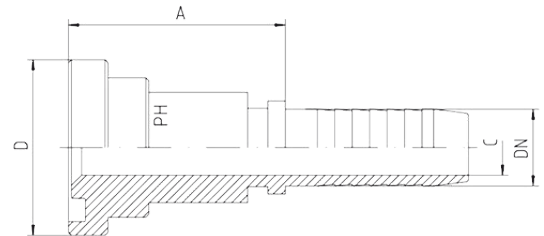


# Straight Flanges



- SAE J 518 / ISO 6162
- SFL 3 = 3000 psi, straight
- SFS 6 = 6000 psi, straight



## 3000 psi

Hose DN	Bore	Flange Dimensions		Approx. Dimensions		Order Code
DN		D		A	C	
12	1/2"	30.2	1/2"	37.5	9.5	SFL3-1/2-DN12
16	5/8"	30.2	1/2"	39.0	12.5	SFL3-1/2-DN16
12	1/2"	38.1	3/4"	40.0	9.5	SFL3-3/4-DN12
16	5/8"	38.1	3/4"	46.5	12.5	SFL3-3/4-DN16
19	3/4"	38.1	3/4"	46.5	14.5	SFL3-3/4-DN19
19	3/4"	44.5	1"	46.5	14.5	SFL3-1-DN19
25	1"	44.5	1"	38.0	20.0	SFL3-1-DN25
25	1"	50.8	1.1/4"	49.0	20.0	SFL3-11/4-DN25
31	1.1/4"	50.8	1.1/4"	54.0	25.5	SFL3-11/4-DN31
31	1.1/4"	60.3	1.1/2"	50.0	25.5	SFL3-11/2-DN31
38	1.1/2"	60.3	1.1/2"	60.0	31.5	SFL3-11/2-DN38
38	1.1/2"	71.4	2"	62.0	31.5	SFL3-2-DN38
51	2"	71.4	2"	48.0	43.0	SFL3-2-DN51

## 6000 psi

Hose DN	Bore	Flange Dimensions		Approx. Dimensions		Order Code
DN		D		A	C	
12	1/2"	31.7	1/2"	39.0	9.5	SFS6-1/2-DN12
16	5/8"	31.7	1/2"	40.0	12.5	SFS6-1/2-DN16
12	1/2"	41.3	3/4"	40.0	9.5	SFS6-3/4-DN12
16	5/8"	41.3	3/4"	41.0	12.5	SFS6-3/4-DN16
19	3/4"	41.3	3/4"	48.0	14.5	SFS6-3/4-DN19
19	3/4"	47.6	1"	65.5	14.5	SFS6-1-DN19
25	1"	47.6	1"	68.0	20.0	SFS6-1-DN25
25	1"	54.0	1.1/4"	50.5	20.0	SFS6-11/4-DN25
31	1.1/4"	54.0	1.1/4"	70.0	25.5	SFS6-11/4-DN31
31	1.1/4"	63.5	1.1/2"	58.0	25.5	SFS6-11/2-DN31
38	1.1/2"	63.5	1.1/2"	68.0	31.5	SFS6-11/2-DN38
38	1.1/2"	79.4	2"	76.0	31.5	SFS6-2-DN38
51	2"	79.4	2"	86.0	43.0	SFS6-2-DN51