

Malleable Iron Fittings



Threads: Threads are in accordance to ISO7-1. All male threads are BSPT and female threads are BSPP.

Materials: Whiteheart malleable EN-GJMW-400-5 cast iron, grade W40-05 according to ISO5922/DIN-1692, and tested in accordance to EN 10242

Media: Suitable for the flow of water, steam, gas or other non aggressive media.



Maximum Working Pressure:

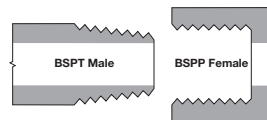
25 bar @ -20°C to +120°C
20 bar @ +300°C

Surface Finishing:

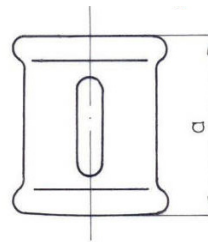
Two types are available:

Black: With an anti-corrosive varnish to protect against rust and after installation prior to plant conditioning.

Galvanised: According to EN 10242, zinc coating weight relative to surface exceeds 500 g/m² (average layer thickness 70 micron).



Female Equal Socket (270)



Black, BSPP	
Part Number	Thread
EE-MI270-14N	1/4"
EE-MI270-38N	3/8"
EE-MI270-12N	1/2"
EE-MI270-34N	3/4"
EE-MI270-1N	1"
EE-MI270-114N	1.1/4"
EE-MI270-112N	1.1/2"
EE-MI270-2N	2"
EE-MI270-212N	2.1/2"
EE-MI270-3N	3"
EE-MI270-4N	4"

Galvanised, BSPP	
Part Number	Thread
EE-MI270-14	1/4"
EE-MI270-38	3/8"
EE-MI270-12	1/2"
EE-MI270-34	3/4"
EE-MI270-1	1"
EE-MI270-114	1.1/4"
EE-MI270-112	1.1/2"
EE-MI270-2	2"
EE-MI270-212	2.1/2"
EE-MI270-3	3"
EE-MI270-4	4"

Dimension[inch]	Weight of carton [kg]		Quantity in carton [pc.]	Dimension a [mm]
	black	galv		
1/4	7,4	7,8	200	27
3/8	8,3	8,6	180	30
1/2	13,1	13,7	180	36
3/4	10,6	10,9	100	39
1	24	24,6	150	45
1 1/4	20,3	20,6	80	50
1 1/2	19,5	20,1	70	55
2	11,9	12,2	30	65
2 1/2	14	14,5	20	74
3	10	10,2	10	80
4	16,7	17,4	10	94