


# Hydraulic Quick Coupling (Carbon Steel) ISO-7241-A, Poppet Valve

**Applications:** This series couplings are used in a wide range of hydraulic applications including construction equipment, manufacturing machinery, and in-plant systems. They can be found anywhere the fluid transfer lines need to be connected and disconnected for operation or maintenance of equipment. Rugged construction makes this Series a good choice for mobile applications including dump trucks, snow ploughs, refuse hauling, mining, asphalt paving, truck trailer connections and many more. In-plant machinery applications include hydraulic fluid, chemicals and gas lines for paper mills, steel production, and many varieties of plant maintenance and production equipment.

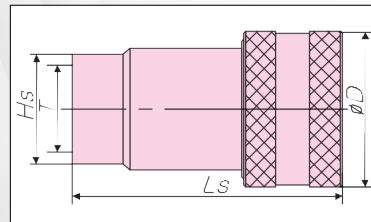
Ideal for hydraulic dump trucks, oil field equipment, spreading equipment and applications requiring the ability to connect or disconnect under pressure.

With Standard Seals: Nitrile

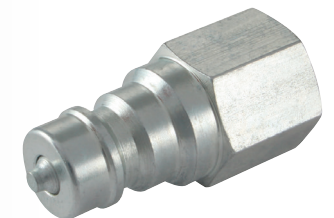
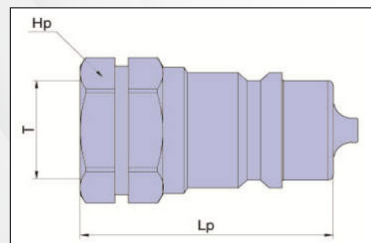
 **Working Temperature:**  
-20°C to +100°C Nitrile  
-25°C to +175°C Viton

## ISO A Interchange

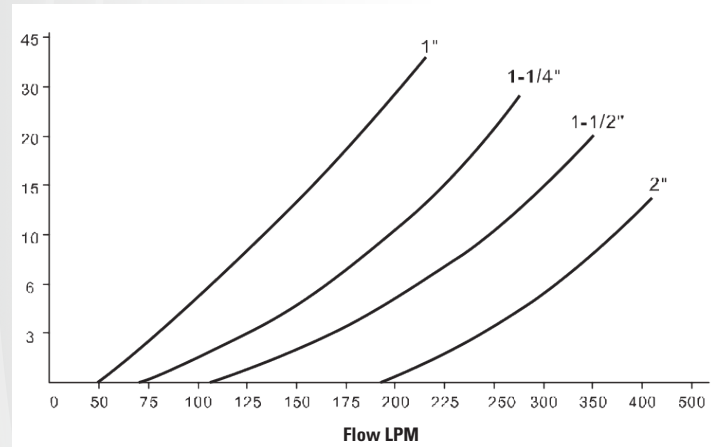
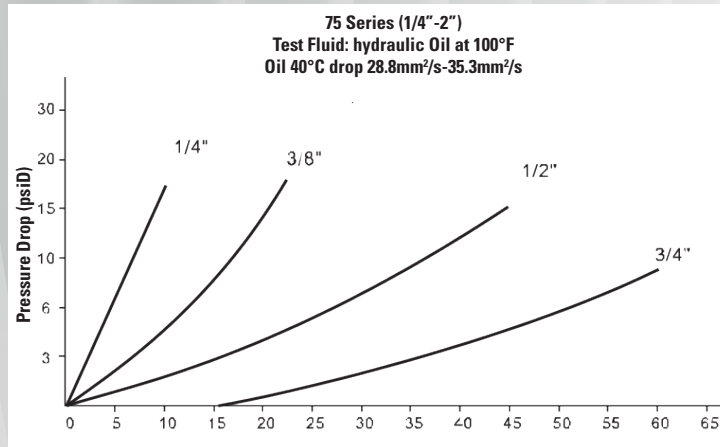
Part. No.	Size	Body Size	Ls	ØD	Hs	T	Max Pressure Bar
HKSA04CS-V	04	1/4"	47	25	S19	1/4" BSPP	350
HKSA06CS-V	06	3/8"	57	31	S22	3/8" BSPP	315
HKSA08CS-V	08	1/2"	66	38	S27	1/2" BSPP	250
HKSA12CS-V	12	3/4"	82.5	48	S34	3/4" BSPP	250
HKSA16CS-V	16	1"	97	54	S41	1" BSPP	230
HKSA20CS-V	20	1.1/4"	117	70	S50	1.1/4" BSPP	230
HKSA24CS-V	24	1.1/2"	133.5	84	S60	1.1/2" BSPP	180
HKSA32CS-V	32	2"	160	100	S75	2" BSPP	130



Part. No.	Size	Body Size	Lp	Hp	T	Max Pressure Bar
HKPA04CS-V	04	1/4"	35	S19	1/4" BSPP	350
HKPA06CS-V	06	3/8"	39	S22	3/8" BSPP	315
HKPA08CS-V	08	1/2"	46	S27	1/2" BSPP	250
HKPA12CS-V	12	3/4"	55	S34	3/4" BSPP	250
HKPA16CS-V	16	1"	63	S41	1" BSPP	230
HKPA20CS-V	20	1.1/4"	75	S50	1.1/4" BSPP	230
HKPA24CS-V	24	1.1/2"	83	S60	1.1/2" BSPP	180
HKPA32CS-V	32	2"	100	S75	2" BSPP	130



## Performance:



## Interchange:

Hansen HA15000 Series, Aeroquip FD56 Series, Parker 6600 Series, Faster ANV Series, DNP PAV Series, Stucchi BIR Series, Safeway S56 Series

## Material:

Coupler Body: Steel, Trivalent Plated  
 Valve: Steel, Poppet Type  
 Springs: 55CrSi  
 Locking O-Ring : 55CrSi  
 Balls: GCr15  
 Seals: Buna-N (Nitrile)  
 Back-Up Ring: PTFE  
 Surface treatment: Zinc plating and Cr 3+ Passivation or Yellow Passivation

## Attention:

Only plug and socket with the same thread fit together.

## Temperature Range:

-20°C+100°C/-4°F+212°F  
 With standard seals: Buna-N( Nitrile)  
 On request seals: Viton, Neoprene, EPDM or other seals.

## Maximum Working Pressure:

1/4"-----04: 350Bar  
 3/8"-----06: 315Bar  
 1/2"-----08: 250Bar  
 3/4"-----12: 250Bar  
 1"-----16: 230Bar  
 1.1/4"-----20: 230Bar  
 1.1/2"-----24: 180Bar  
 2"-----32: 130Bar

## Hydraulic Quick Coupling (Stainless Steel 316) ISO-7241-A, Poppet Valve

stainless  
steel

**Applications:** This series couplings are used in a wide range of hydraulic applications including construction equipment, manufacturing machinery, and in-plant systems. They can be found anywhere the fluid transfer lines need to be connected and disconnected for operation or maintenance of equipment. Rugged construction makes this Series a good choice for mobile applications including dump trucks, snow ploughs, refuse hauling, mining, asphalt paving, truck trailer connections and many more. In-plant machinery applications include hydraulic fluid, chemicals and gas lines for paper mills, steel production, and many varieties of plant maintenance and production equipment.

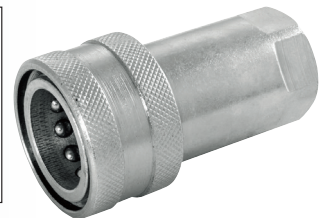
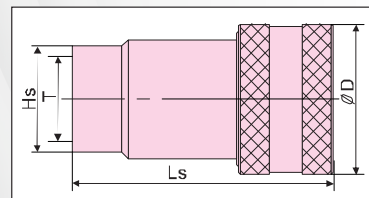
Ideal for hydraulic dump trucks, oil field equipment, spreading equipment and applications requiring the ability to connect or disconnect under pressure.

With Standard Seals: Nitrile

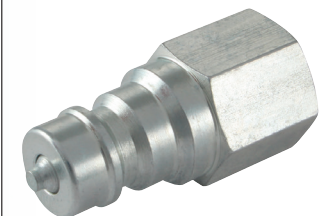
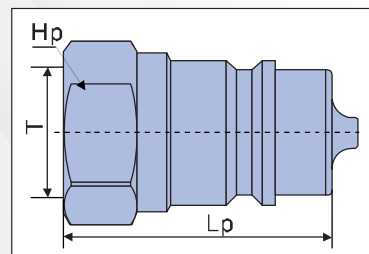
**Working Temperature:**  
-20°C to +200°C Viton

### ISO A Interchange

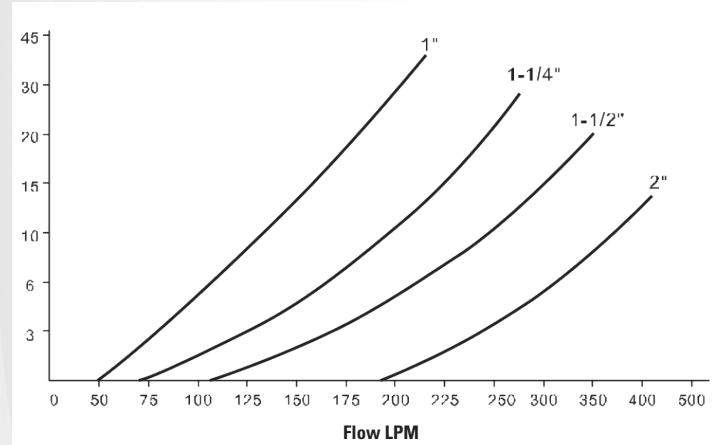
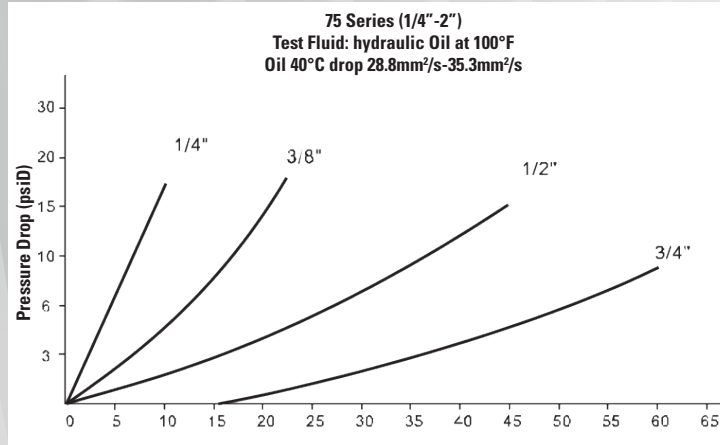
Part. No.	Size	Body Size	Ls	øD	Hs	T	Max Pressure Bar
HFSSFC7314-V	04	1/4"	47	25	S19	1/4" BSPP	350
HFSSFC7338-V	06	3/8"	57	31	S22	3/8" BSPP	315
HFSSFC7312-V	08	1/2"	66	38	S27	1/2" BSPP	250
HFSSFC7334-V	12	3/4"	82.5	48	S34	3/4" BSPP	250
HFSSFC7310-V	16	1"	97	54	S41	1" BSPP	230
HKSA04SS-NPT	20	1.1/4"	117	70	S50	1.1/4" BSPP	230
HKSA06SS-NPT	24	1.1/2"	133.5	84	S60	1.1/2" BSPP	180
HKSA08SS-NPT	32	2"	160	100	S75	2" BSPP	130



Part. No.	Size	Body Size	Lp	Hp	T	Max Pressure Bar
HFSSFP7314-V	04	1/4"	35	S19	1/4" BSPP	350
HFSSFP7338-V	06	3/8"	39	S22	3/8" BSPP	315
HFSSFP7312-V	08	1/2"	44	S27	1/2" BSPP	250
HFSSFP7334-V	12	3/4"	55	S34	3/4" BSPP	250
HFSSFP7310-V	16	1"	63	S41	1" BSPP	230
HKPA04SS-NPT	20	1.1/4"	75	S50	1.1/4" BSPP	230
HKPA06SS-NPT	24	1.1/2"	83	S60	1.1/2" BSPP	180
HKPA08SS-NPT	32	2"	100	S75	2" BSPP	130



## Performance:



## Interchange:

Hansen HA15000 Series, Aeroquip FD56 Series, Parker 6600 Series, Faster ANV Series, DNP PAV Series, Stucchi BIR Series, Safeway S56 Series

## Material:

Coupler Body: AISI316  
 Valve: AISI316, Poppet Type  
 Springs: SS302  
 Locking O-Ring: SS302  
 Balls: 440C  
 Back-Up Ring: PTFE  
 Seals: Viton or NBR

## Attention:

Only plug and socket with the same thread fit together.

## Temperature Range:

-20°C to +200°C / -4°F to +392°F  
 With standard seals: Viton

## Maximum Working Pressure:

1/4"-----04: 250Bar  
 3/8"-----06: 200Bar  
 1/2"-----08: 200Bar  
 3/4"-----12: 160Bar  
 1"-----16: 125Bar