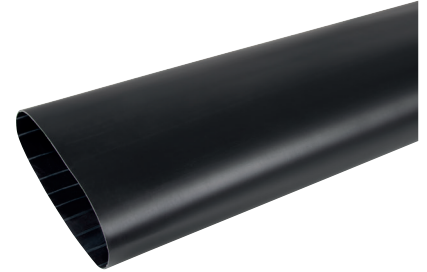


Medium Crosslinked Polyolefin



Features

- Heavy wall tubes
- High resistance to impact and abrasion
- 3:1 Shrink ratio
- Continuous operating temperature: -55°C to +110°C
- Shrink temperature: 120°C



Tube Properties	Test Method	Performance (Typical)
Operating Temperature	IEC 216	-55°C to +110°C
Water absorption	ISO 62	< 0.15%
Tensile strength	ASTM D 638	14 MPa
Ultimate elongation	ASTM D 638	> 400%
Longitudinal Change	UL 224	+0 to -10%
Dielectric strength	IEC 243	>20 kV/mm
Volume Resistance	IEC 93	10 ¹⁴ Ohm-cm
Eccentricity	ASTM D 2671	< 30%
Copper Stability	ASTM-D 2671	Pass

Adhesive		
Water Absorption	ISO 62	< 0.2%
Softening Point	ASTM D E28	85°C
Peel Strength	DIN 30672	4 N/cm
Copper Stability	ASTM D 2671	Non corrosive
Resistance to fungus	ISO 846	Pass

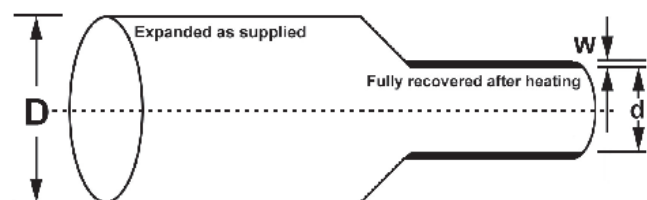
Standard Colours
black

Order Ref. No. MW/ MWA	Expanded	Recovered		Standard Lengths*
	Internal Diameter D (MIN)	Internal Diameter d (MAX)	Wall Thickness W (min)	
	mm	mm	mm	
8/2	8	2	1.7	1, 1.2
12/3	12	3	2.0	1, 1.2
16/5	16	5	2.2	1, 1.2
22/6	22	6	2.2	1, 1.2
28/6	28	6	2.5	1, 1.2
33/8	33	8	2.5	1, 1.2
40/12	40	12	2.5	1, 1.2
45/13	45	13	2.5	1, 1.2
55/16	55	16	2.7	1, 1.2
65/19	65	19	2.8	1, 1.2
75/22	75	22	3.0	1, 1.2
85/25	85	25	3.0	1, 1.2
95/25	95	25	3.0	1, 1.2
115/34	115	34	3.0	1, 1.2
140/42	140	42	3.0	1, 1.2
160/50	160	50	3.0	1, 1.2
175/55	175	55	3.0	1, 1.2
200/60	200	60	3.0	1, 1.2

* Other SIZES & lengths available on request

MWA tubes are internally coated with a film lining of Hot Melt Adhesive.

If this coating is not required then use reference MW only.



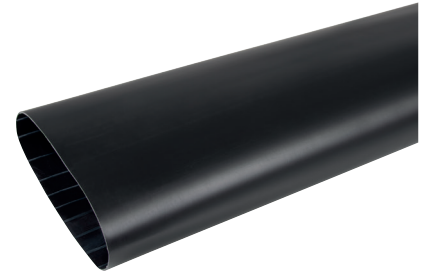
All information contained in this leaflet is believed to be reliable. We advise however that customers should separately evaluate the suitability of the products for their particular application. Heatshrink Solutions give no guarantees in respect of the accuracy or sufficiency of the information presented and disclaim any liability regarding its use. In no instance will we be liable for any eventual, indirect, or consequential damage or damages arising from the sale, resale, transfer, use or misuse of the product.

Heavy Wall Crosslinked Polyolefin



Features

- Heavy wall tubes
- High resistance to impact and abrasion
- 3:1 Shrink ratio
- Continuous operating temperature: -55°C to +110°C
- Shrink temperature: 120°C



Property	Test Method	Performance
Resistance to stressing (50°C)	ASTM D-1693	No Cracking
Longitudinal Change	UI 224	0%, -10%
Tensile strength	ASTM D 638	>14.MPa
Ultimate elongation	ASTM-D 638	>400%
Elongation after Ageing	(168hrs @ 150°C)	>300%
Eccentricity	ASTM D 792	<30%
Density	ASTM-D 792	1.05 g/cm ³
Dielectric strength	IEC 243	>18kV/mm
Volume resistance	IEC 93	10 ¹³ Ohm-cm
Water Absorption	ISO 62	<0.15%

Adhesive		
Copper Stability	ASTM-D-2671	Non Corrosive
Water absorption	ASTM D- 570	0.20%
Fungus Resistance	ISO 846	Pass
Adhesive Softening Point	ASTM D E8	85 +5°C
Adhesive Peel Strength	DIN 30672	4N/cm

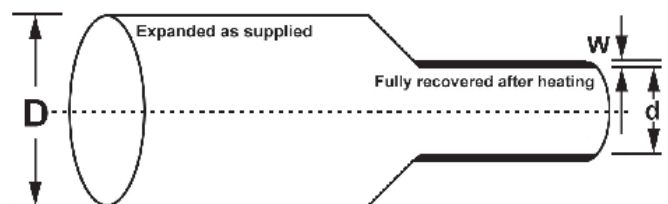
Standard Colours
black
Special colours available on request

Order Ref. No. MW/MWA	Expanded	Recovered		Standard Lengths*
	Internal Diameter D (MIN)	Internal Diameter d (MAX)	Wall Thickness W (min)	
	mm	mm	mm	
9/3	9	3	1.8	1.2
15/4	13	4	2.4	1.2
22/6	22	6	2.7	1.2
33/8	33	8	3.2	1.2
40/12	40	12	4.1	1.2
45/12	45	12	4.1	1.2
55/16	55	16	4.1	1.2
75/22	75	22	4.1	1.2
85/25	85	25	4.3	1.2
95/30	95	30	4.3	1.2
115/34	115	34	4.3	1.2
130/36	130	36	4.3	1.2
160/50	160	50	4.3	1.2
180/50	175	50	4.3	1.2
200/60	200	60	4.3	1.2
235/65	235	65	4.5	1.2
250/65	250	65	4.5	1.5
265/75	265	75	4.5	1.5
300/85	300	85	4.5	1.5
350/95	350	95	4.8	1.5

* Other sizes & lengths available on request

HWA tubes are internally coated with a film lining of Hot Melt Adhesive. If this coating is not required then use reference HW only.

PRODUCT DIMENSIONS (mm)



All information contained in this leaflet is believed to be reliable. We advise however that customers should separately evaluate the suitability of the products for their particular application. Heatshrink Solutions give no guarantees in respect of the accuracy or sufficiency of the information presented and disclaim any liability regarding its use. In no instance will we be liable for any eventual, indirect, or consequential damage or damages arising from the sale, resale, transfer, use or misuse of the product.