



Caratteristiche Tecniche:

- Materiale: Alluminio
- Trattamento: Barillatura

Technical Specifications:

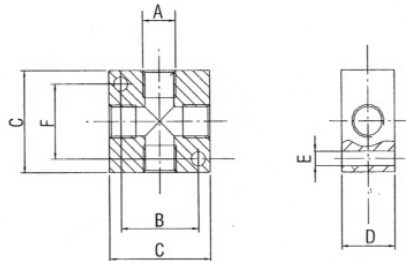
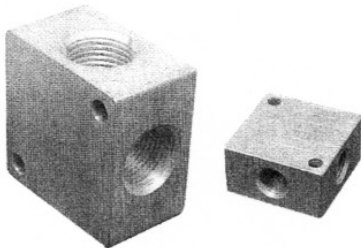
- Materials: Aluminium
- Treatment: Tumbling

Technische Eigenschaften:

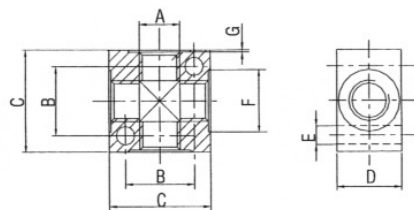
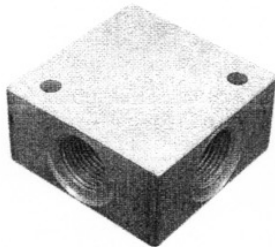
- Werkstoff: Aluminium
- Behandlung: Trommeln

Caractéristiques Techniques:

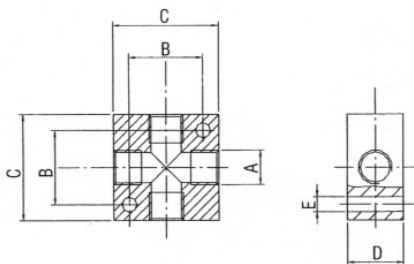
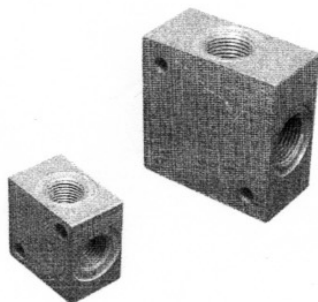
- Matériaux: Aluminium
- Traitement: Polissage au tonneau



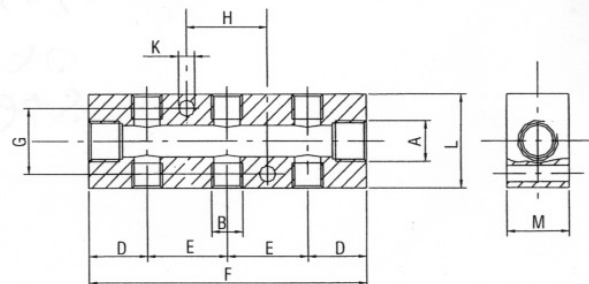
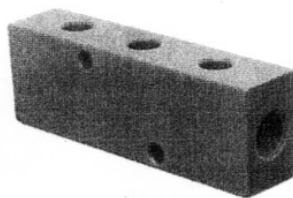
Codice Code	A	B	C	D	E	F	Kg
145.8	G 1/8	23	30	16	4,25	22	0,030
145.4	G 1/4	30	40	20	5,25	27	0,065
145.3	G 3/8	39	50	25	6,25	38	0,120
145.2	G 1/2	39	50	25	6,25	38	0,090



Codice Code	A	B	C	D	E	F	G	Kg
147.8	G 1/8	17	25	15	4,5	14	0,5	0,015
147.4	G 1/4	26	40	20	5,5	18	0,5	0,065
147.3	G 3/8	34	50	25	5,5	22	0,5	0,120
147.2	G 1/2	34	50	25	5,5	27	0,5	0,125



Codice Code	A	B	C	D	E	Kg
150.8	G 1/8	21	30	16	4,25	0,030
150.4	G 1/4	21	30	18	4,25	0,030
150.3	G 3/8	30	40	20	5,25	0,055
150.2	G 1/2	37	50	30	6,50	0,135

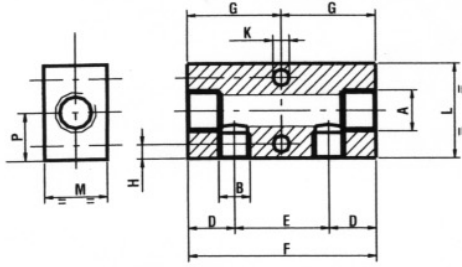


Ripartitori speciali dimensioni con uscite contraposte.
Distribution frames with opposed outlets and special sizes

Codice Code	A	B	D	E	F	G	H	L	M	K	Kg
145.8.6	G 1/4	G 1/8	19	26	90	21	26	30	30	5,25	0,110

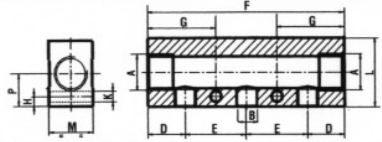
A RICHIESTA	OPTION ON REQUEST	AUF WUNSCH	OPTION SUR DEMANDE
1xx.xxB Anodizzazione Bianca	White Anodized	Weisse Anodische	Blanc Anodisé
1xx.xxO Anodizzazione Gialla	Yellow Anodized	Gelbe Anodische	Jaune Anodisé
1xx.xxA Anodizzazione Azzurra	Blue Anodized	Blaue Anodische	Bleu Anodisé
1xx.xxN Anodizzazione Nera	Black Anodized	Schwarze Anodische	Noir Anodisé

2 entrate
2 uscite
2 inlets
2 outlets



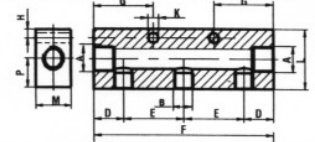
Codice Code	A	B	D	E	F	G	H	L	M	P	K	Kg
155.02	G 1/8	M5	15	15	45	22,5	3,5	20	15	10	4,25	0,032
151.02	G 1/4	G 1/8	15	30	60	30,0	4,5	30	20	15	5,25	0,080
152.02	G 3/8	G 1/4	18	36	72	36,0	6,0	40	20	20	6,50	0,110
153.02	G 3/8	G 1/8	18	30	66	33,0	4,5	40	20	20	5,25	0,137
154.02	G 1/2	G 1/4	22	36	80	40,0	6,0	40	28	20	6,50	0,200
156.02	G 1/2	G 3/8	25	40	90	45,0	6,0	40	28	20	6,50	0,180
157.02	G 1/2	G 1/2	30	40	100	50,0	6,0	40	28	20	6,50	0,195

2 entrate
3 uscite
2 inlets
3 outlets



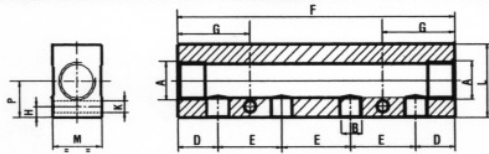
Codice Code	A	B	D	E	F	G	H	L	M	P	K	Kg
152.03	G 3/8	G 1/4	18	36	108	36,0	6,0	30	20	19	6,50	0,120
153.03	G 3/8	G 1/8	18	30	96	33,0	4,5	30	20	19	5,25	0,120
154.03	G 1/2	G 1/4	22	36	116	40,0	6,0	40	28	20	6,50	0,240
156.03	G 1/2	G 3/8	25	40	130	45,0	6,0	40	28	20	6,50	0,265
157.03	G 1/2	G 1/2	30	40	140	50,0	6,0	40	28	20	6,50	0,275

2 entrate
3 uscite
2 inlets
3 outlets



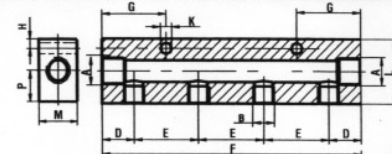
Codice Code	A	B	D	E	F	G	H	L	M	P	K	Kg
155.03	G 1/8	M5	15	15	60	22,5	3,5	20	15	10	4,25	0,043
151.03	G 1/4	G 1/8	15	30	90	30,0	4,5	30	20	15	5,25	0,115

2 entrate
4 uscite
2 inlets
4 outlets



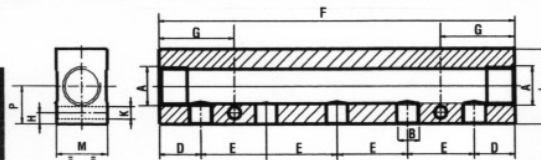
Codice Code	A	B	D	E	F	G	H	L	M	P	K	Kg
152.04	G 3/8	G 1/4	18	36	144	36,0	6,0	30	20	19	6,50	0,160
153.04	G 3/8	G 1/8	18	30	126	33,0	4,5	30	20	19	5,25	0,160
154.04	G 1/2	G 1/4	22	36	152	40,0	6,0	40	28	20	6,50	0,315
156.04	G 1/2	G 3/8	25	40	170	45,0	6,0	40	28	20	6,50	0,350
157.04	G 1/2	G 1/2	30	40	180	50,0	6,0	40	28	20	6,50	0,355

2 entrate
4 uscite
2 inlets
4 outlets



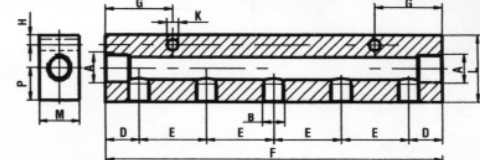
Codice Code	A	B	D	E	F	G	H	L	M	P	K	Kg
155.03	G 1/8	M5	15	15	75	22,5	3,5	20	15	10	4,25	0,053
151.03	G 1/4	G 1/8	15	30	120	30,0	4,5	30	20	15	5,25	0,158

2 entrate
5 uscite
2 inlets
5 outlets



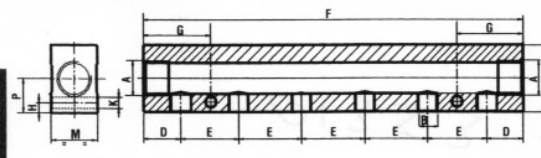
Codice Code	A	B	D	E	F	G	H	L	M	P	K	Kg
152.05	G 3/8	G 1/4	18	36	180	36,0	6,0	30	20	19	6,50	0,205
153.05	G 3/8	G 1/8	18	30	156	33,0	4,5	30	20	19	5,25	0,205
154.05	G 1/2	G 1/4	22	36	188	40,0	6,0	40	28	20	6,50	0,395
156.05	G 1/2	G 3/8	25	40	210	45,0	6,0	40	28	20	6,50	0,430
157.05	G 1/2	G 1/2	30	40	220	50,0	6,0	40	28	20	6,50	0,435

2 entrate
5 uscite
2 inlets
5 outlets



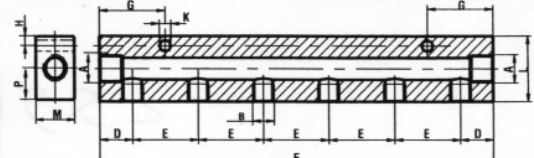
Codice Code	A	B	D	E	F	G	H	L	M	P	K	Kg
155.05	G 1/8	M5	15	15	90	22,5	3,5	20	15	10	4,25	0,064
151.05	G 1/4	G 1/8	15	30	150	30,0	4,5	30	20	15	5,25	0,200

2 entrate
6 uscite
2 inlets
6 outlets

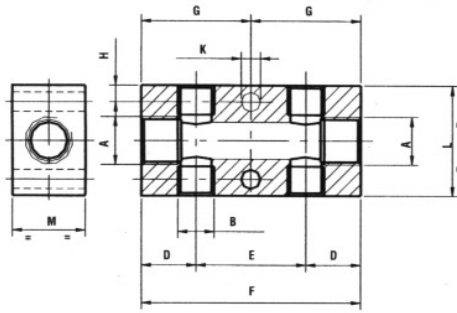


Codice Code	A	B	D	E	F	G	H	L	M	P	K	Kg
152.06	G 3/8	G 1/4	18	36	216	36,0	6,0	30	20	19	6,50	0,250
153.06	G 3/8	G 1/8	18	30	186	33,0	4,5	30	20	19	5,25	0,250
154.06	G 1/2	G 1/4	22	36	224	40,0	6,0	40	28	20	6,50	0,470
156.06	G 1/2	G 3/8	25	40	250	45,0	6,0	40	28	20	6,50	0,515
157.06	G 1/2	G 1/2	30	40	260	50,0	6,0	40	28	20	6,50	0,510

2 entrate
6 uscite
2 inlets
6 outlets

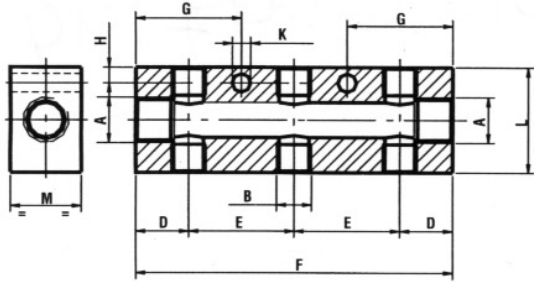


Codice Code	A	B	D	E	F	G	H	L	M	P	K	Kg
155.06	G 1/8	M5	15	15	105	22,5	3,5	20	15	10	4,25	0,074
151.06	G 1/4	G 1/8	15	30	180	30,0	4,5	30	20	15	5,25	0,240



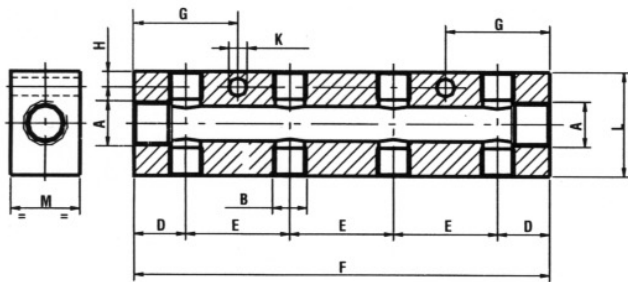
2 entrate - 2+2 uscite • 2 inlets - 2+2 outlets

Codice Code	A	B	D	E	F	G	H	L	M	K	Kg
155.22	G 1/8	M5	15	15	45	22,5	3,5	20	15	4,25	0,030
151.22	G 1/4	G 1/8	15	30	60	30,0	4,5	30	20	5,25	0,075
152.22	G 3/8	G 1/4	18	36	72	36,0	6,0	40	20	6,50	0,105
153.22	G 3/8	G 1/8	18	30	66	33,0	4,5	40	20	5,25	0,137
154.22	G 1/2	G 1/4	22	36	80	40,0	6,0	40	28	6,50	0,200
156.22	G 1/2	G 3/8	25	40	90	45,0	6,0	40	28	6,50	0,170
157.22	G 1/2	G 1/2	30	40	100	50,0	6,0	40	28	6,50	0,175



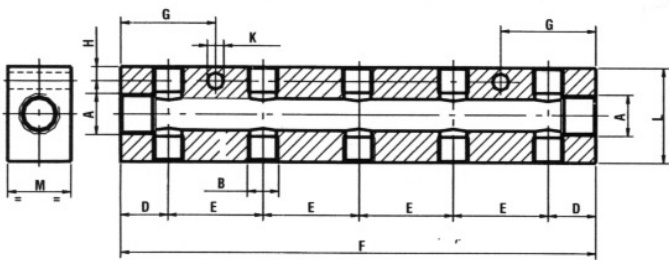
2 entrate - 3+3 uscite • 2 inlets - 3+3 outlets

Codice Code	A	B	D	E	F	G	H	L	M	K	Kg
155.33	G 1/8	M5	15	15	60	22,5	3,5	20	15	4,25	0,041
151.33	G 1/4	G 1/8	15	30	90	30,0	4,5	30	20	5,25	0,110
152.33	G 3/8	G 1/4	18	36	108	36,0	6,0	40	20	6,50	0,165
153.33	G 3/8	G 1/8	18	30	96	33,0	4,5	40	20	5,25	0,195
154.33	G 1/2	G 1/4	22	36	116	40,0	6,0	40	28	6,50	0,278
156.33	G 1/2	G 3/8	25	40	130	45,0	6,0	40	28	6,50	0,245
157.33	G 1/2	G 1/2	30	40	140	50,0	6,0	40	28	6,50	0,240



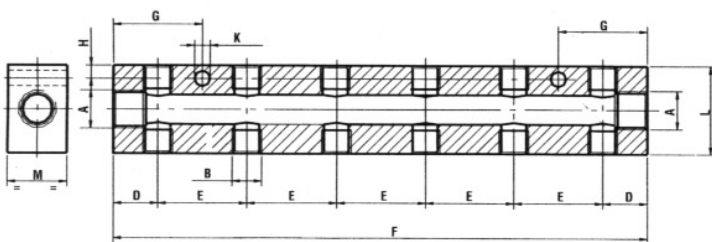
2 entrate - 4+4 uscite • 2 inlets - 4+4 outlets

Codice Code	A	B	D	E	F	G	H	L	M	K	Kg
155.44	G 1/8	M5	15	15	75	22,5	3,5	20	15	4,25	0,051
151.44	G 1/4	G 1/8	15	30	120	30,0	4,5	30	20	5,25	0,150
152.44	G 3/8	G 1/4	18	36	144	36,0	6,0	40	20	6,50	0,220
153.44	G 3/8	G 1/8	18	30	126	33,0	4,5	40	20	5,25	0,253
154.44	G 1/2	G 1/4	22	36	152	40,0	6,0	40	28	6,50	0,364
156.44	G 1/2	G 3/8	25	40	170	45,0	6,0	40	28	6,50	0,325
157.44	G 1/2	G 1/2	30	40	180	50,0	6,0	40	28	6,50	0,315



2 entrate - 5+5 uscite • 2 inlets - 5+5 outlets

Codice Code	A	B	D	E	F	G	H	L	M	K	Kg
155.55	G 1/8	M5	15	15	90	22,5	3,5	20	15	4,25	0,061
151.55	G 1/4	G 1/8	15	30	150	30,0	4,5	30	20	5,25	0,190
152.55	G 3/8	G 1/4	18	36	180	36,0	6,0	40	20	6,50	0,280
153.55	G 3/8	G 1/8	18	30	156	33,0	4,5	40	20	5,25	0,311
154.55	G 1/2	G 1/4	22	36	188	40,0	6,0	40	28	6,50	0,450
156.55	G 1/2	G 3/8	25	40	210	45,0	6,0	40	28	6,50	0,400
157.55	G 1/2	G 1/2	30	40	220	50,0	6,0	40	28	6,50	0,385



2 entrate - 6+6 uscite • 2 inlets - 6+6 outlets

Codice Code	A	B	D	E	F	G	H	L	M	K	Kg
155.66	G 1/8	M5	15	15	105	22,5	3,5	20	15	4,25	0,071
151.66	G 1/4	G 1/8	15	30	180	30,0	4,5	30	20	5,25	0,230
152.66	G 3/8	G 1/4	18	36	216	36,0	6,0	40	20	6,50	0,340
153.66	G 3/8	G 1/8	18	30	186	33,0	4,5	40	20	5,25	0,369
154.66	G 1/2	G 1/4	22	36	224	40,0	6,0	40	28	6,50	0,536
156.66	G 1/2	G 3/8	25	40	250	45,0	6,0	40	28	6,50	0,475
157.66	G 1/2	G 1/2	30	40	260	50,0	6,0	40	28	6,50	0,455