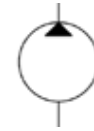


Gear Pumps



Roquet
making moves

Group 1 Aluminium Gear Pumps

Gear pumps and motors

Roquet produces aluminium and cast-iron bodied gear pumps and motors from 0.33-150 cm³/rev. All covers are cast-iron (from their own foundry) which reduces noise, increases life and makes possible in-built valves for speed control, etc. Roquet has an anechoic chamber where the Roquet gear profile has been optimised for lower noise levels.

A gear pump is a positive displacement pump. A gear pump contains two identical interlocking gears, supported by separate shafts.

Generally, one gear is driven by a motor, and this in turn drives the other gear (idler gear).

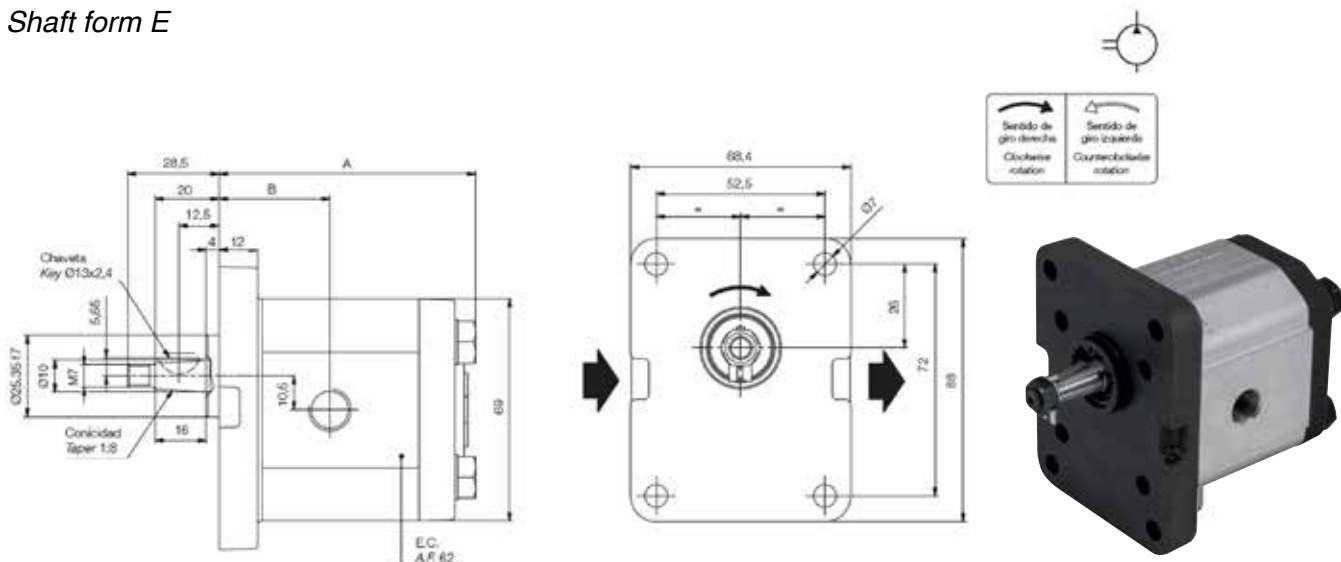
Fixed volumes of fluid are enclosed between the outer gear teeth mechanically using a cyclic pumping action. This delivers a smooth and pulse-free flow, which is proportional to the rotational speed of the gears.

Close tolerances between the gears prevent fluid from transferring back through the centre. Also, close tolerances between the gears and the casing allow the pump to create suction at the inlet, and prevents fluid leaking back from the outlet. (Leakage is more likely with low viscosity liquids)

Gear Pumps

Front Flange Type 10

Shaft form E



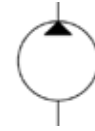
Clockwise rotation, 1:8taper shaft, 4bolt European flange, BSP ports

Part Number	Displacement (cc/rev)	Cont Max Pressure (bar)	Intermittent Max Pressure (bar)
1L01.5DE10R	1	275	300
1L03DE10R	2		
1L05DE10R	3.3	240	275
1L07.5DE10R	5	185	200
1L010DE10R	6.6	135	150

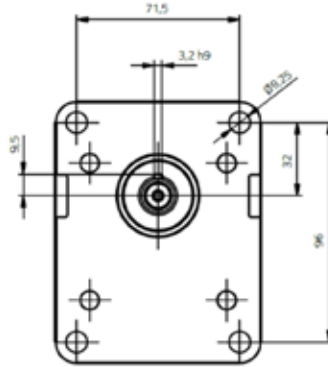
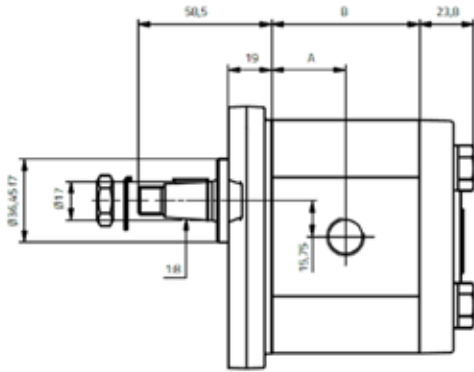
Also available with other shaft, flange, porting or rotation configurations, and in cast iron, please enquire within

Gear Pumps

Group 2 Aluminium Gear Pumps



Roquet
making moves

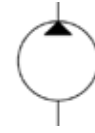


Clockwise rotation, 1:8taper shaft, 4bolt European flange, BSP ports

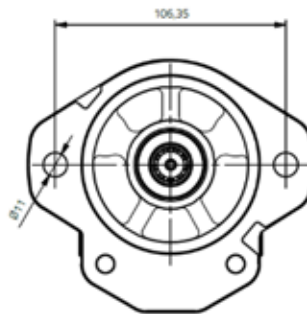
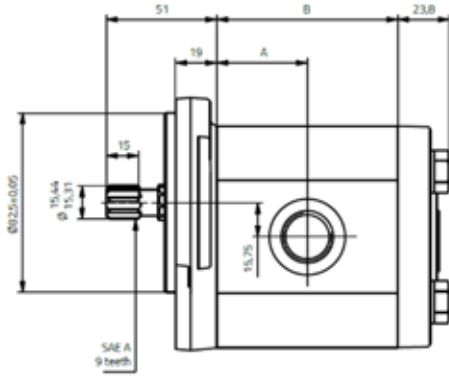
Part Number	Displacement (cc/ rev)	Cont Max Pressure (bar)	Intermittent Max Pressure (bar)
1G4CDE10R	4	275	300
1G6CDE10R	6		
1G8CDE10R	8		
1G11CDE10R	10.7		
1G12CDE10R	12		
1G15CDE10R	14.7	250	275
1G16CDE10R	16		
1G18CDE10R	18	225	250
1G23CDE10R	23.3	180	200
1G27CDE10R	26.6	170	190

Gear Pumps

Group 2 Aluminium Gear Pumps



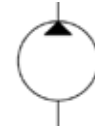
Roquet
making moves



Clockwise rotation, 9tooth splined shaft, 2bolt SAE-A flange, BSP ports

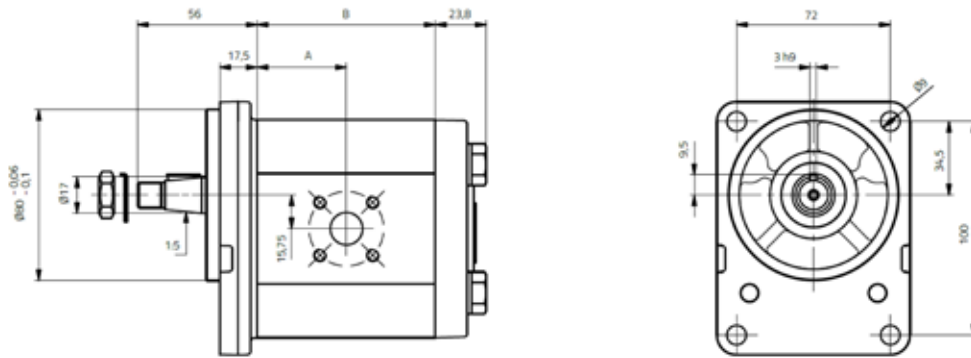
Part Number	Displacement (cc/ rev)	Cont Max Pressure (bar)	Intermittent Max Pressure (bar)
1G4CDG09R	4	275	300
1G6CDG09R	6		
1G8CDG09R	8		
1G11CDG09R	10.7		
1G12CDG09R	12		
1G15CDG09R	14.7	250	275
1G16CDG09R	16		
1G18CDG09R	18	225	250
1G23CDG09R	23.3	180	200
1G27CDG09R	26.6	170	190

Gear Pumps



Roquet
making moves

Group 2 Aluminium Gear Pumps

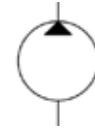


Clockwise rotation, 1:5 taper shaft, 4 bolt German flange, Square flanged ports

Part Number	Displacement (cc/ rev)	Cont Max Pressure (bar)	Intermittent Max Pressure (bar)
1G4CDJ23F	4	275	300
1G6CDJ23F	6		
1G8CDJ23F	8		
1G11CDJ23F	10.7		
1G12CDJ23F	12		
1G15CDJ23F	14.7	250	275
1G16CDJ23F	16		
1G18CDJ23F	18	225	250
1G23CDJ23F	23.3	180	200
1G27CDJ23F	26.6	170	190

Also available with other shaft, flange, porting or rotation configurations, and in cast iron, please enquire within

Gear Pumps

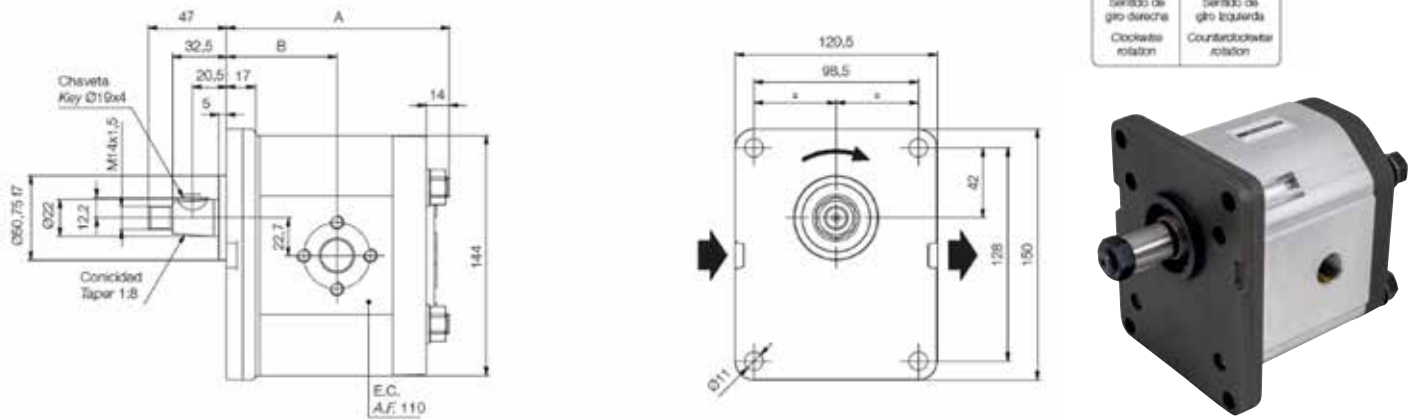


Roquet
making moves

Group 3 Aluminium Gear Pumps

Front Flange Type 10

Shaft form E

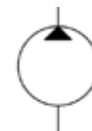


Clockwise rotation, 1:5 taper shaft, 4 bolt German flange, Square flanged ports

Part Number	Displacement (cc/rev)	Cont Max Pressure (bar)	Intermittent Max Pressure (bar)
1PLA27DE10R	18	250	275
1PLA36DE10R	24		
1PLA45DE10R	30		
1PLA54DE10R	36	225	250
1PLA66DE10R	44	200	225
1PLA84DE10R	56	175	200

Gear Pumps

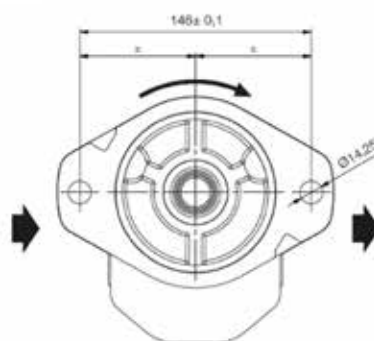
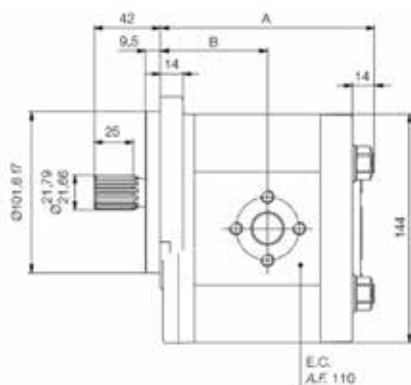
Group 3 Aluminium Gear Pumps



Roquet
making moves

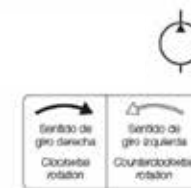
Front Flange Type 09

Shaft form G



SAE J498b base plana
Diametral pitch 15/32
Ángulo de presión 30°
Número de dientes 13
Ajuste lateral
Clase 1

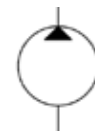
SAE J498b flt base
Diametral pitch 15/32
Pressure angle 30°
Tooth number 13
Side fit
Type I



Clockwise rotation, 13tooth splined shaft, 2bolt SAE-B flange, BSP ports

Part Number	Displacement (cc/rev)	Cont Max Pressure (bar)	Intermittent Max Pressure (bar)
1PLA27DG09R	18	250	275
1PLA36DG09R	24		
1PLA45DG09R	30		
1PLA54DG09R	36	225	250
1PLA66DG09R	44	200	225
1PLA84DG09R	56	175	200

Gear Pumps

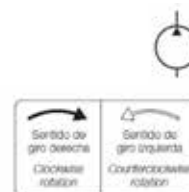
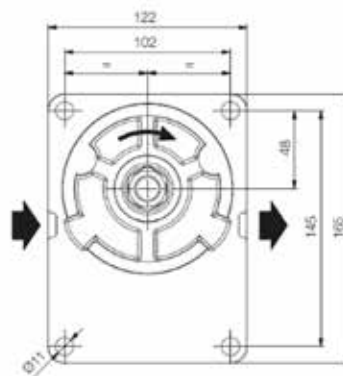
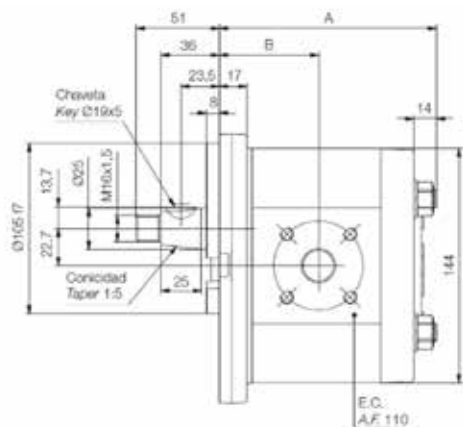


Roquet
making moves

Group 3 Aluminium Gear Pumps

Front Flange Type 23

Shaft form J

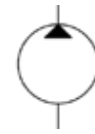


Clockwise rotation, 1:5taper shaft, 4bolt German flange, Square flanged ports

Part Number	Displacement (cc/rev)	Cont Max Pressure (bar)	Intermittent Max Pressure (bar)
1PLA27DJ23F	18	250	275
1PLA36DJ23F	24		
1PLA45DJ23F	30		
1PLA54DJ23F	36	225	250
1PLA66DJ23F	44	200	225
1PLA84DJ23F	56	175	200

Also available with other shaft, flange, porting or rotation configurations, and in cast iron, please enquire within

Gear Pumps

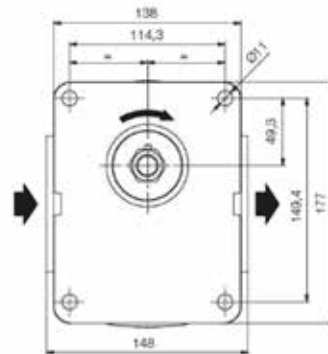
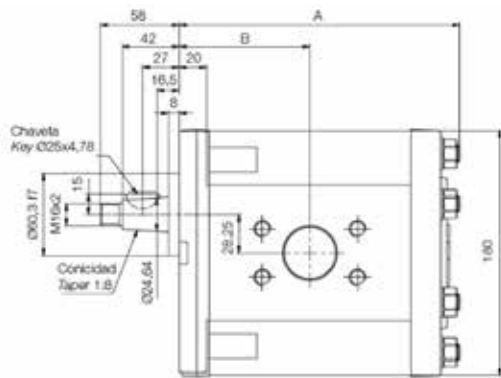


Roquet
making moves

Group 3.5 Aluminium Gear Pumps

Front Flange Type 10

Shaft form E

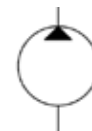


Clockwise rotation, group 3.5 taper shaft, group 3.5 4bolt flange, SAE ports

Part Number	Displacement (cc/rev)	Cont Max Pressure (bar)	Intermittent Max Pressure (bar)
1PLC80DE10M	53.3	225	250
1PLC100DE10M	66.6		
1PLC125DE10M	83.3		
1PLC150DE10M	100		
1PLC175DE10M	116.6		
1PLC200DE10M	133.3	200	225
1PLC225DE10M	150	150	175

Gear Pumps

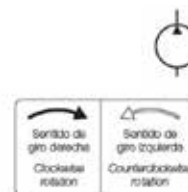
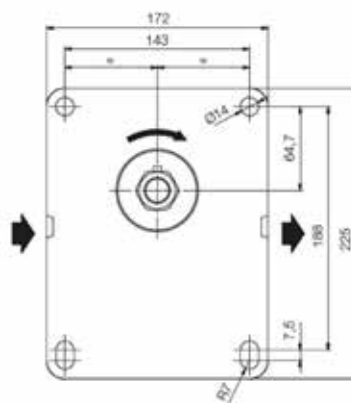
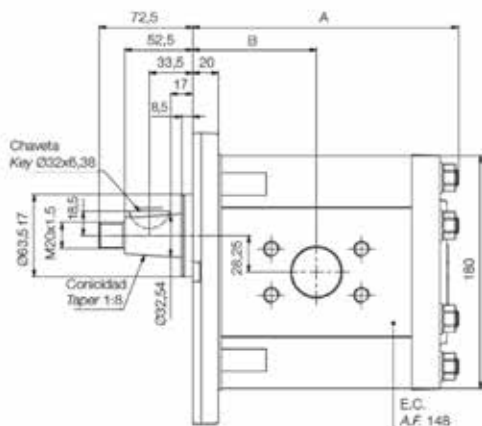
Group 4 Aluminium Gear Pumps



Roquet
making moves

Front Flange Type 23

Shaft form J



Clockwise rotation, group 4 taper shaft, group 4 4bolt flange, SAE ports

Part Number	Displacement (cc/rev)	Cont Max Pressure (bar)	Intermittent Max Pressure (bar)
1PLC80DJ23M	53.3	225	250
1PLC100DJ23M	66.6		
1PLC125DJ23M	83.3		
1PLC150DJ23M	100		
1PLC175DJ23M	116.6	200	225
1PLC200DJ23M	133.3		
1PLC225DJ23M	150	150	175

Also available with other shaft, flange, porting or rotation configurations, and in cast iron, please enquire within