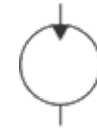


# Gear Motors



**Roquet**  
making moves

## Group 1 Aluminium Gear Motors

### Gear pumps and motors

Roquet produces aluminium and cast-iron bodied gear pumps and motors from 0.33-150 cm<sup>3</sup>/rev. All covers are cast-iron (from their own foundry) which reduces noise, increases life and makes possible in-built valves for speed control, etc. Roquet has an anechoic chamber where the Roquet gear profile has been optimised for lower noise levels.

A gear motor is a mechanical actuator converting hydraulic pressure and flow into shaft rotation and torque. It is the rotary counterpart of the hydraulic cylinder.

Similarly to a gear pump, a gear motor consists of two identical interlocking gears, the driven gear and the idler gear. High pressure oil enters the inlet side of the motor, and flows around the outer

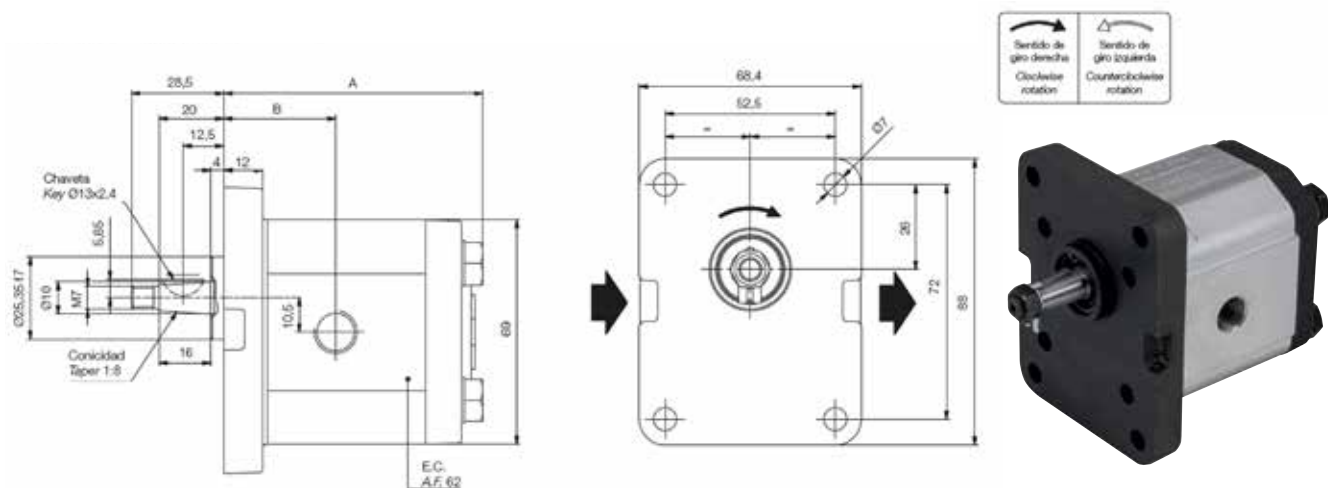
Periphery of the gear teeth. The gears mesh, which prevents the oil from coming back to the inlet from the outlet side.

For lubrication, a small amount of oil from the pressurised side bleeds through the bearings, and vents to the low pressure side, or through the drain port.

### Gear Motors

### Front Flange Type 10

Shaft form E



Clockwise rotation, 1:8taper shaft, 4bolt European flange, BSP ports

Part Number	Displacement (cc/rev)	Cont Max Pressure (bar)	Intermittent Max Pressure (bar)
1ML01.5DE10R	1	275	300
1ML03DE10R	2		
1ML05DE10R	3.3	240	275
1ML07.5DE10R	5	185	200
1ML010DE10R	6.6	135	150

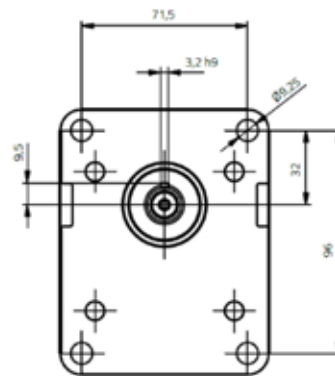
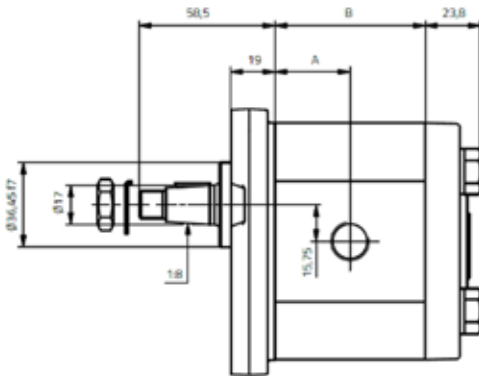
Also available with other shaft, flange, porting or rotation configurations, and in cast iron, please enquire within

# Gear Motors

## Group 2 Aluminium Gear Motors



**Roquet**  
making moves



Clockwise rotation, 1:8 taper shaft, 4 bolt European flange, BSP ports

Part Number	Displacement (cc/rev)	Cont Max Pressure (bar)	Intermittent Max Pressure (bar)
1MG4CDE10R	4	275	300
1MG6CDE10R	6		
1MG8CDE10R	8		
1MG11CDE10R	10.7		
1MG12CDE10R	12		
1MG15CDE10R	14.7	250	275
1MG16CDE10R	16		
1MG18CDE10R	18	225	250
1MG23CDE10R	23.3	180	200
1MG27CDE10R	26.6	170	190

# Gear Motors

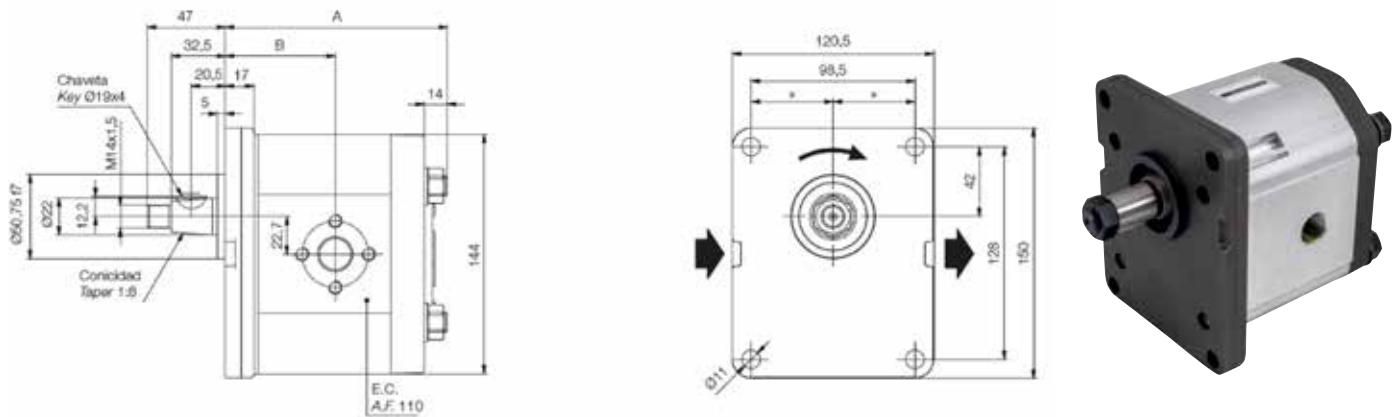


**Roquet**  
making moves

## Group 3 Aluminium Gear Motors

### Front Flange Type 10

Shaft form E



Clockwise rotation, 1:8 taper shaft, 4 bolt European flange, BSP ports

Part Number	Displacement (cc/rev)	Cont Max Pressure (bar)	Intermittent Max Pressure (bar)
1MPLA27DE10R	18	250	275
1MPLA36DE10R	24		
1MPLA45DE10R	30		
1MPLA54DE10R	36	225	250
1MPLA66DE10R	44	200	225
1MPLA84DE10R	56	175	200

Also available with other shaft, flange, porting or rotation configurations, and in cast iron, please enquire within

# Gear Motors

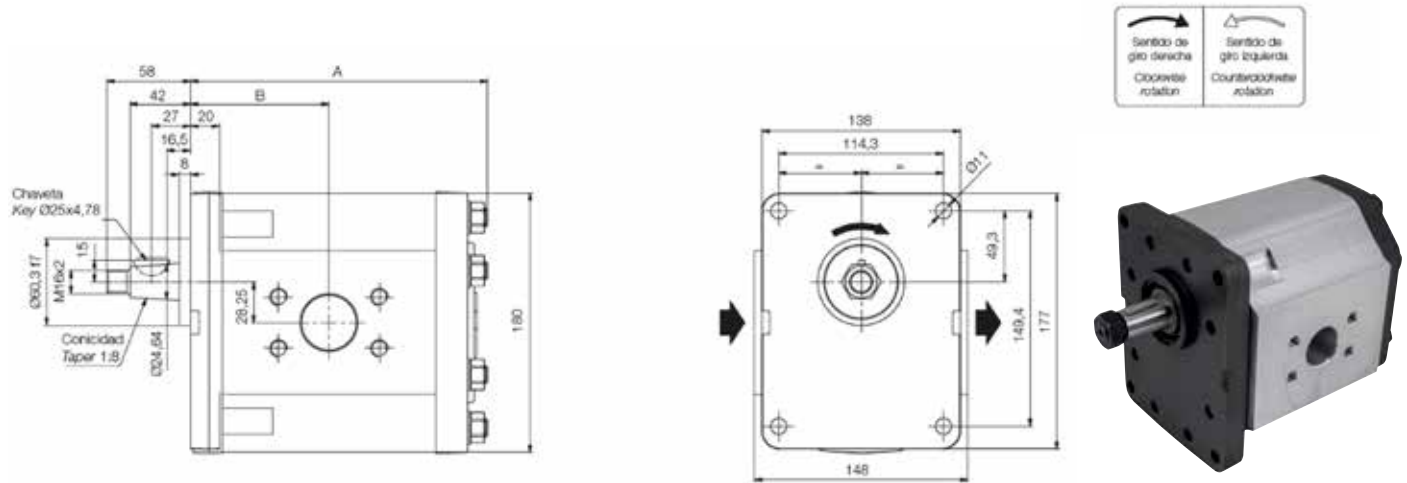


**Roquet**  
making moves

## Group 3.5 Aluminium Gear Motors

### Front Flange Type 10

Shaft form E



Clockwise rotation, group 3.5 taper shaft, group 3.5 4bolt flange, SAE ports

Part Number	Displacement (cc/rev)	Cont Max Pressure (bar)	Intermittent Max Pressure (bar)
1MPLC80DE10M	53.3	225	250
1MPLC100DE10M	66.6		
1MPLC125DE10M	83.3		
1MPLC150DE10M	100		
1MPLC175DE10M	116.6	200	225
1MPLC200DE10M	133.3		
1MPLC225DE10M	150	150	175

# Gear Motors

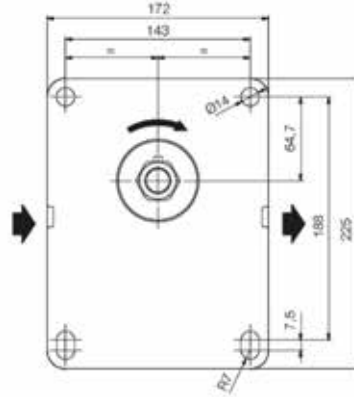
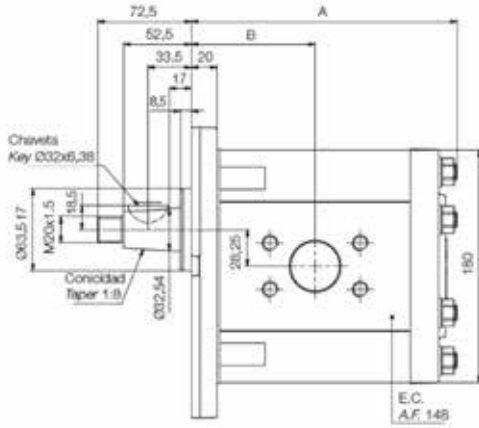


**Roquet**  
making moves

## Group 4 Aluminium Gear Motors

### Front Flange Type 23

Shaft form J



Clockwise rotation, group 4 taper shaft, group 4 4bolt flange, SAE ports

Part Number	Displacement (cc/ rev)	Cont Max Pressure (bar)	Intermittent Max Pressure (bar)
1MPLC80DJ23M	53.3	225	250
1MPLC100DJ23M	66.6		
1MPLC125DJ23M	83.3		
1MPLC150DJ23M	100		
1MPLC175DJ23M	116.6	200	225
1MPLC200DJ23M	133.3		
1MPLC225DJ23M	150	150	175

Also available with other shaft, flange, porting or rotation configurations, and in cast iron, please enquire within