

Hydraulic Piston Pumps



M Series Piston Pump



Vickers

123AL02012A

Pumps - PVM018ER02AS02AAC2820000 1A0A

Model Code: PVM018ER02AS02AAC28200001A0A

[Modify Configuration](#)



For Price and Delivery, Please Contact your Regional Customer Service Representative.

Product Specifications

Feature	Code	Description
CODE TITLE	PVM	VICKERS VARIABLE DISPLACEMENT OPEN CIRCUIT PISTON PUMPS
DISPLACEMENT	018	18,0 CM ³ /R [1.1 IN ³ /R] (315 BAR MAX)
VALVE PLATE	E	INDUSTRIAL (1800 R/MIN MAX)
INPUT ROTATION	R	CLOCKWISE (RIGHT HAND)
INPUT SHAFT	02	SAE J744-19-1, SAE 19-1, STRAIGHT KEYED (MODEL 018 AND 028)
MOUNTING FLANGE	A	SAE J744-82-2 (A 2-BOLT) (MODEL 018 AND 028)
MAIN PORT LOCATION	S	SIDE
PORT OPTIONS	02	SAE J518 FLANGE PORTS, SAE AUXILIARY PORTS
PUMP SPECIAL FEATURES	AA	ADJUSTABLE MAX DISPLACEMENT STOP (CONTAINS SINGLE SHAFT SEAL)
CONTROL	C	PRESSURE AND FLOW COMPENSATOR WITH PLUGGED ORIFICE
PRESSURE COMP SETTING	28	276-284 BAR [4002-4118 LBF/IN ²]
FLOW COMP SETTING / UNLOAD VLV STANDBY	20	19-21 bar [275.5-304.5 lbf/in ²]
OTHER COMPENSATION / UNLOAD VLV RESET	00	NONE
COMPENSATOR SPECIAL FEATURE	0	NONE
AUXILIARY MOUNTING	1	Auxiliary Mount with Cover Plate, Suitable for all thru-drive mounting kits
PAINT	A	BLUE
CUSTOMER IDENTIFICATION	0	NONE
DESIGN CODE	A	A



Vickers

123AL02054A

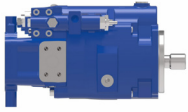
Pumps - PVM057ER09GS02AAA2800000 1A0A

Model Code: PVM057ER09GS02AAA28000001A0A [Modify Configuration](#)

For Price and Delivery, Please Contact your Regional Customer Service Representative.

Product Specifications

Feature	Code	Description
CODE TITLE	PVM	VICKERS VARIABLE DISPLACEMENT OPEN CIRCUIT PISTON PUMPS
DISPLACEMENT	057	57,4 CM3/R [3.50 IN3/R] (315 BAR MAX)
VALVE PLATE	E	INDUSTRIAL (1800 R/MIN MAX)
INPUT ROTATION	R	CLOCKWISE (RIGHT HAND)
INPUT SHAFT	09	SAE J744-32-1, SAE C, STRAIGHT KEYED (MODEL 057, 074, 098 AND 131)
MOUNTING FLANGE	G	SAE J744-127-4 (C, 4-BOLT) (MODELS 057, 074, 098 AND 131)
MAIN PORT LOCATION	S	SIDE
PORT OPTIONS	02	SAE J518 FLANGE PORTS, SAE AUXILIARY PORTS
PUMP SPECIAL FEATURES	AA	ADJUSTABLE MAX DISPLACEMENT STOP (CONTAINS SINGLE SHAFT SEAL)
CONTROL	A	PRESSURE COMPENSATOR
PRESSURE COMP SETTING	28	276-284 BAR [4002-4118 LBF/IN2]
FLOW COMP SETTING / UNLOAD VLV STANDBY	00	NONE
OTHER COMPENSATION / UNLOAD VLV RESET	00	NONE
COMPENSATOR SPECIAL FEATURE	0	NONE
AUXILIARY MOUNTING	1	Auxiliary Mount with Cover Plate, Suitable for all thru-drive mounting kits
PAINT	A	BLUE
CUSTOMER IDENTIFICATION	0	NONE
DESIGN CODE	A	A



Vickers

123AL02056A

Pumps - PVM057ER09GS02AAC2820000 1A0A

Model Code: PVM057ER09GS02AAC28200001A0A [Modify Configuration](#)

For Price and Delivery, Please Contact your Regional Customer Service Representative.

Product Specifications

Feature	Code	Description
CODE TITLE	PVM	VICKERS VARIABLE DISPLACEMENT OPEN CIRCUIT PISTON PUMPS
DISPLACEMENT	057	57,4 CM3/R [3.50 IN3/R] (280 BAR MAX)
VALVE PLATE	E	INDUSTRIAL (1800 R/MIN MAX)
INPUT ROTATION	R	CLOCKWISE (RIGHT HAND)
INPUT SHAFT	09	SAE J744-32-1, SAE C, STRAIGHT KEYED (MODEL 057, 074, 098 AND 131)
MOUNTING FLANGE	G	SAE J744-127-4 (C, 4-BOLT) (MODELS 057, 074, 098 AND 131)
MAIN PORT LOCATION	S	SIDE
PORT OPTIONS	02	SAE J518 FLANGE PORTS, SAE AUXILIARY PORTS
PUMP SPECIAL FEATURES	AA	ADJUSTABLE MAX DISPLACEMENT STOP (CONTAINS SINGLE SHAFT SEAL)
CONTROL	C	PRESSURE AND FLOW COMPENSATOR WITH PLUGGED ORIFICE
PRESSURE COMP SETTING	28	276-284 BAR [4002-4118 LBF/IN2]
FLOW COMP SETTING / UNLOAD VLV STANDBY	20	19-21 bar [275.5-304.5 lbf/in2]
OTHER COMPENSATION / UNLOAD VLV RESET	00	NONE
COMPENSATOR SPECIAL FEATURE	0	NONE
AUXILIARY MOUNTING	1	Auxiliary Mount with Cover Plate, Suitable for all thru-drive mounting kits
PAINT	A	BLUE
CUSTOMER IDENTIFICATION	0	NONE
DESIGN CODE	A	A



Vickers

123AL02062A

Pumps - PVM074ER09GS02AAA2800000 1A0A

Model Code: PVM074ER09GS02AAA28000001A0A [Modify Configuration](#)

For Price and Delivery, Please Contact your Regional Customer Service Representative.

Product Specifications

Feature	Code	Description
CODE TITLE	PVM	VICKERS VARIABLE DISPLACEMENT OPEN CIRCUIT PISTON PUMPS
DISPLACEMENT	074	73,7 CM ³ /R [4.50 IN ³ /R] (315 BAR MAX)
VALVE PLATE	E	INDUSTRIAL (1800 R/MIN MAX)
INPUT ROTATION	R	CLOCKWISE (RIGHT HAND)
INPUT SHAFT	09	SAE J744-32-1, SAE C, STRAIGHT KEYED (MODEL 057, 074, 098 AND 131)
MOUNTING FLANGE	G	SAE J744-127-4 (C, 4-BOLT) (MODELS 057, 074, 098 AND 131)
MAIN PORT LOCATION	S	SIDE
PORT OPTIONS	02	SAE J518 FLANGE PORTS, SAE AUXILIARY PORTS
PUMP SPECIAL FEATURES	AA	ADJUSTABLE MAX DISPLACEMENT STOP (CONTAINS SINGLE SHAFT SEAL)
CONTROL	A	PRESSURE COMPENSATOR
PRESSURE COMP SETTING	28	276-284 BAR [4002-4118 LBF/IN ²]
FLOW COMP SETTING / UNLOAD VLV STANDBY	00	NONE
OTHER COMPENSATION / UNLOAD VLV RESET	00	NONE
COMPENSATOR SPECIAL FEATURE	0	NONE
AUXILIARY MOUNTING	1	Auxiliary Mount with Cover Plate, Suitable for all thru-drive mounting kits
PAINT	A	BLUE
CUSTOMER IDENTIFICATION	0	NONE
DESIGN CODE	A	A



Vickers

123AL02070A

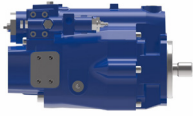
Pumps - PVM098ER09GS02AAA2800000 1A0A

Model Code: PVM098ER09GS02AAA28000001A0A  [Modify Configuration](#)

For Price and Delivery, Please Contact your Regional Customer Service Representative.

Product Specifications

Feature	Code	Description
CODE TITLE	PVM	VICKERS VARIABLE DISPLACEMENT OPEN CIRCUIT PISTON PUMPS
DISPLACEMENT	098	98,3 CM ³ /R [6.00 IN ³ /R] (280 BAR MAX)
VALVE PLATE	E	INDUSTRIAL (1800 R/MIN MAX)
INPUT ROTATION	R	CLOCKWISE (RIGHTHAND)
INPUT SHAFT	09	SAE J744-32-1, SAE C, STRAIGHT KEYED (MODEL 057, 074, 098 AND 131)
MOUNTING FLANGE	G	SAE J744-127-4 (C, 4-BOLT) (MODELS 057, 074, 098 AND 131)
MAIN PORT LOCATION	S	SIDE
PORT OPTIONS	02	SAE J518 FLANGE PORTS, SAE AUXILIARY PORTS
PUMP SPECIAL FEATURES	AA	ADJUSTABLE MAX DISPLACEMENT STOP (CONTAINS SINGLE SHAFT SEAL)
CONTROL	A	PRESSURE COMPENSATOR
PRESSURE COMP SETTING	28	276-284 BAR [4002-4118 LBF/IN ²]
FLOW COMP SETTING / UNLOAD VLV STANDBY	00	NONE
OTHER COMPENSATION / UNLOAD VLV RESET	00	NONE
COMPENSATOR SPECIAL FEATURE	0	NONE
AUXILIARY MOUNTING	1	Auxiliary Mount with Cover Plate, Suitable for all thru-drive mounting kits
PAINT	A	BLUE
CUSTOMER IDENTIFICATION	0	NONE
DESIGN CODE	A	A



Vickers

123AL02074A

Pumps - PVM098ER09GS02AAC2820000 1A0A

Model Code: PVM098ER09GS02AAC28200001A0A [Modify Configuration](#)

For Price and Delivery, Please Contact your Regional Customer Service Representative.

Product Specifications

Feature	Code	Description
CODE TITLE	PVM	VICKERS VARIABLE DISPLACEMENT OPEN CIRCUIT PISTON PUMPS
DISPLACEMENT	098	98,3 CM ³ /R [6.00 IN ³ /R] (280 BAR MAX)
VALVE PLATE	E	INDUSTRIAL (1800 R/MIN MAX)
INPUT ROTATION	R	CLOCKWISE (RIGHT HAND)
INPUT SHAFT	09	SAE J744-32-1, SAE C, STRAIGHT KEYED (MODEL 057, 074, 098 AND 131)
MOUNTING FLANGE	G	SAE J744-127-4 (C, 4-BOLT) (MODELS 057, 074, 098 AND 131)
MAIN PORT LOCATION	S	SIDE
PORT OPTIONS	02	SAE J518 FLANGE PORTS, SAE AUXILIARY PORTS
PUMP SPECIAL FEATURES	AA	ADJUSTABLE MAX DISPLACEMENT STOP (CONTAINS SINGLE SHAFT SEAL)
CONTROL	C	PRESSURE AND FLOW COMPENSATOR WITH PLUGGED ORIFICE
PRESSURE COMP SETTING	28	276-284 BAR [4002-4118 LBF/IN ²]
FLOW COMP SETTING / UNLOAD VLV STANDBY	20	19-21 bar [275.5-304.5 lbf/in ²]
OTHER COMPENSATION / UNLOAD VLV RESET	00	NONE
COMPENSATOR SPECIAL FEATURE	0	NONE
AUXILIARY MOUNTING	1	Auxiliary Mount with Cover Plate, Suitable for all thru-drive mounting kits
PAINT	A	BLUE
CUSTOMER IDENTIFICATION	0	NONE
DESIGN CODE	A	A



Vickers

123AL02150A

Pumps - PVM045ER06CS02AAC2811000 1A0A

Model Code: PVM045ER06CS02AAC28110001A0A [Modify Configuration](#)

For Price and Delivery, Please Contact your EMEA Customer Service.

Product Specifications

Feature	Code	Description
CODE TITLE	PVM	VICKERS VARIABLE DISPLACEMENT OPEN CIRCUIT PISTON PUMPS
DISPLACEMENT	045	45,1 CM3/R [2.75 IN3/R] (280 BAR MAX)
VALVE PLATE	E	INDUSTRIAL (1800 R/MIN MAX)
INPUT ROTATION	R	CLOCKWISE (RIGHTHAND)
INPUT SHAFT	06	SAE J744-25-1, SAE B-B, STRAIGHT KEYED (MODEL 018, 028, 045 AND 057)
MOUNTING FLANGE	C	SAE J744-101-2 (B 2-BOLT) (MODELS 018, 028, 045)
MAIN PORT LOCATION	S	SIDE
PORT OPTIONS	02	SAE J518 FLANGE PORTS, SAE AUXILIARY PORTS
PUMP SPECIAL FEATURES	AA	ADJUSTABLE MAX DISPLACEMENT STOP (CONTAINS SINGLE SHAFT SEAL)
CONTROL	C	PRESSURE AND FLOW COMPENSATOR WITH PLUGGED ORIFICE
PRESSURE COMP SETTING	28	276-284 BAR [4002-4118 LBF/IN2]
FLOW COMP SETTING / UNLOAD VLV STANDBY	11	10-12 bar [145-174 lbf/in2]
OTHER COMPENSATION / UNLOAD VLV RESET	00	NONE
COMPENSATOR SPECIAL FEATURE	0	NONE
AUXILIARY MOUNTING	1	Auxiliary Mount with Cover Plate, Suitable for all thru-drive mounting kits
PAINT	A	BLUE
CUSTOMER IDENTIFICATION	0	NONE
DESIGN CODE	A	A



Vickers

123AL02241A

Pumps - PVM074ER09GS02AAC2820000 1A0A

Model Code: PVM074ER09GS02AAC28200001A0A [Modify Configuration](#)

For Price and Delivery, Please Contact your Regional Customer Service Representative.

Product Specifications

Feature	Code	Description
CODE TITLE	PVM	VICKERS VARIABLE DISPLACEMENT OPEN CIRCUIT PISTON PUMPS
DISPLACEMENT	074	73.7 CM ³ /R [4.50 IN ³ /R] (280 BAR MAX)
VALVE PLATE	E	INDUSTRIAL (1800 R/MIN MAX)
INPUT ROTATION	R	CLOCKWISE (RIGHTHAND)
INPUT SHAFT	09	SAE J744-32-1, SAE C, STRAIGHT KEYED (MODEL 057, 074, 098 AND 131)
MOUNTING FLANGE	G	SAE J744-127-4 (C, 4-BOLT) (MODELS 057, 074, 098 AND 131)
MAIN PORT LOCATION	S	SIDE
PORT OPTIONS	02	SAE J518 FLANGE PORTS, SAE AUXILIARY PORTS
PUMP SPECIAL FEATURES	AA	ADJUSTABLE MAX DISPLACEMENT STOP (CONTAINS SINGLE SHAFT SEAL)
CONTROL	C	PRESSURE AND FLOW COMPENSATOR WITH PLUGGED ORIFICE
PRESSURE COMP SETTING	28	276-284 BAR [4002-4118 LBF/IN ²]
FLOW COMP SETTING / UNLOAD VLV STANDBY	20	19-21 bar [275.5-304.5 lbf/in ²]
OTHER COMPENSATION / UNLOAD VLV RESET	00	NONE
COMPENSATOR SPECIAL FEATURE	0	NONE
AUXILIARY MOUNTING	1	Auxiliary Mount with Cover Plate, Suitable for all thru-drive mounting kits
PAINT	A	BLUE
CUSTOMER IDENTIFICATION	0	NONE
DESIGN CODE	A	A



Vickers

123AL02356A

Pumps - PVM131ER09GS02AAC2820000 1A0A

Model Code: PVM131ER09GS02AAC28200001A0A [Modify Configuration](#)

For Price and Delivery, Please Contact your Regional Customer Service Representative.

Product Specifications

Feature	Code	Description
CODE TITLE	PVM	VICKERS VARIABLE DISPLACEMENT OPEN CIRCUIT PISTON PUMPS
DISPLACEMENT	131	131,1 CM3/R [8.00 IN3/R] (315 BAR MAX)
VALVE PLATE	E	INDUSTRIAL (1800 R/MIN MAX)
INPUT ROTATION	R	CLOCKWISE (RIGHT HAND)
INPUT SHAFT	09	SAE J744-32-1, SAE C, STRAIGHT KEYED (MODEL 057, 074, 098 AND 131)
MOUNTING FLANGE	G	SAE J744-127-4 (C, 4-BOLT) (MODELS 057, 074, 098 AND 131)
MAIN PORT LOCATION	S	SIDE
PORT OPTIONS	02	SAE J518 FLANGE PORTS, SAE AUXILIARY PORTS
PUMP SPECIAL FEATURES	AA	ADJUSTABLE MAX DISPLACEMENT STOP (CONTAINS SINGLE SHAFT SEAL)
CONTROL	C	PRESSURE AND FLOW COMPENSATOR WITH PLUGGED ORIFICE
PRESSURE COMP SETTING	28	276-284 BAR [4002-4118 LBF/IN2]
FLOW COMP SETTING / UNLOAD VLV STANDBY	20	19-21 bar [275.5-304.5 lbf/in2]
OTHER COMPENSATION / UNLOAD VLV RESET	00	NONE
COMPENSATOR SPECIAL FEATURE	0	NONE
AUXILIARY MOUNTING	1	Auxiliary Mount with Cover Plate, Suitable for all thru-drive mounting kits
PAINT	A	BLUE
CUSTOMER IDENTIFICATION	0	NONE
DESIGN CODE	A	A



Vickers

123AL02398A

Pumps - PVM045ER06CS02AAA2800000 1A0A

Model Code: PVM045ER06CS02AAA28000001A0A [Modify Configuration](#)

For Price and Delivery, Please Contact your EMEA Customer Service.

Product Specifications

Feature	Code	Description
CODE TITLE	PVM	VICKERS VARIABLE DISPLACEMENT OPEN CIRCUIT PISTON PUMPS
DISPLACEMENT	045	45,1 CM ³ /R [2.75 IN ³ /R] (280 BAR MAX)
VALVE PLATE	E	INDUSTRIAL (1800 R/MIN MAX)
INPUT ROTATION	R	CLOCKWISE (RIGHT HAND)
INPUT SHAFT	06	SAE J744-25-1, SAE B-B, STRAIGHT KEYED (MODEL 018, 028, 045 AND 057)
MOUNTING FLANGE	C	SAE J744-101-2 (B 2-BOLT) (MODELS 018, 028, 045)
MAIN PORT LOCATION	S	SIDE
PORT OPTIONS	02	SAE J518 FLANGE PORTS, SAE AUXILIARY PORTS
PUMP SPECIAL FEATURES	AA	ADJUSTABLE MAX DISPLACEMENT STOP (CONTAINS SINGLE SHAFT SEAL)
CONTROL	A	PRESSURE COMPENSATOR
PRESSURE COMP SETTING	28	276-284 BAR [4002-4118 LBF/IN ²]
FLOW COMP SETTING / UNLOAD VLV STANDBY	00	NONE
OTHER COMPENSATION / UNLOAD VLV RESET	00	NONE
COMPENSATOR SPECIAL FEATURE	0	NONE
AUXILIARY MOUNTING	1	Auxiliary Mount with Cover Plate, Suitable for all thru-drive mounting kits
PAINT	A	BLUE
CUSTOMER IDENTIFICATION	0	NONE
DESIGN CODE	A	A