

Brass Adaptors



Equal Elbows

Characteristic:

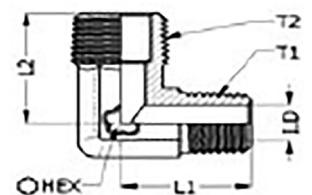
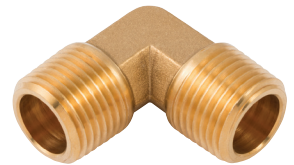
- Pipe thread includes BSPT (R)

Material:

- Connectors are machined from brass JIS3604
- Elbows, tees are forged and machined from brass JIS3771
- Pipe thread: BSPT (R)
- Working Temperature: -54°C to +121°C
- Working Pressure: 1000 psi (70 bar) max.

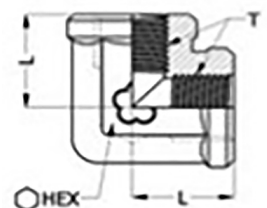
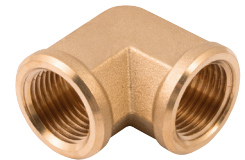
Male Thread, BSPT

| Part Code | Thread T1 | Thread T2 | L1 mm | L2 mm | HEX mm | I.D mm |
|-----------|-----------|-----------|-------|-------|--------|--------|
| UP5-18 | 1/8" | 1/8" | 18 | 18 | 9.5 | 5.5 |
| UP5-14 | 1/8" | 1/4" | 19.5 | 23 | 11 | 5.5 |
| UP5-38 | 3/8" | 3/8" | 24 | 24 | 13 | 9 |
| UP5-12 | 1/2" | 1/2" | 31 | 31 | 15 | 11 |



Female Thread, BSPT

| Part Code | Item no. | Thread T | L | HEX | I.D |
|-----------|----------|----------|------|------|------|
| UP6-18 | A07-L101 | 1/8 | 14 | 14.5 | 8.2 |
| UP6-14 | A07-L202 | 1/4 | 17 | 17 | 11.2 |
| UP6-38 | A07-L303 | 3/8 | 18 | 20.5 | 14.8 |
| UP6-12 | A07-L404 | 1/2 | 23.5 | 24 | 18.5 |



Male Thread, BSPT

| Part Code | Item no. | Thread T1 | Thread T2 | L1 | L2 | HEX | I.D |
|-----------|----------|-----------|-----------|------|------|-----|------|
| UP7-18 | A06-L101 | 1/8 | 1/8 | 15.5 | 19.5 | 14 | 5.5 |
| UP7-14 | A06-L202 | 1/4 | 1/4 | 14.5 | 24 | 17 | 8 |
| UP7-38 | A06-L303 | 3/8 | 3/8 | 15.5 | 27.5 | 21 | 10.5 |
| UP7-12 | A06-L404 | 1/2 | 1/2 | 18.5 | 33 | 24 | 13 |

