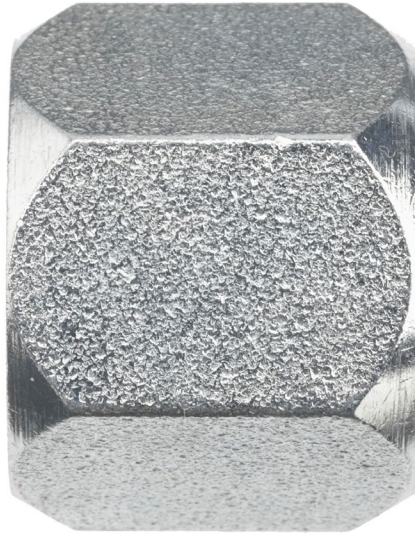




# 37-2030 - (0304-C)

JIC Cap Nut



## **BRENNAN INDUSTRIES, EXTRAORDINARY FITTINGS**

In business for over 60 years, Brennan supplies more than 50,000 types of hydraulic fittings and adaptors in sizes ranging from 1/16 to 3 inches.

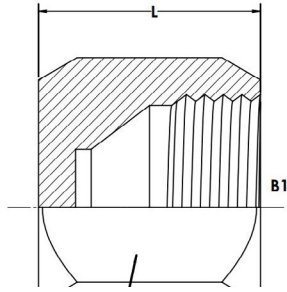
### **Learn More at Brennan University:**

[Fittings 101](#)

[Tube Fittings Resources](#)

[Literature and Certifications](#)

**Tech Data Sheet:**



# 37-2030 - (0304-C)

DESCRIPTION:

JIC CAP NUT

UK PART NUMBER:

37-2030

US PART NUMBER:

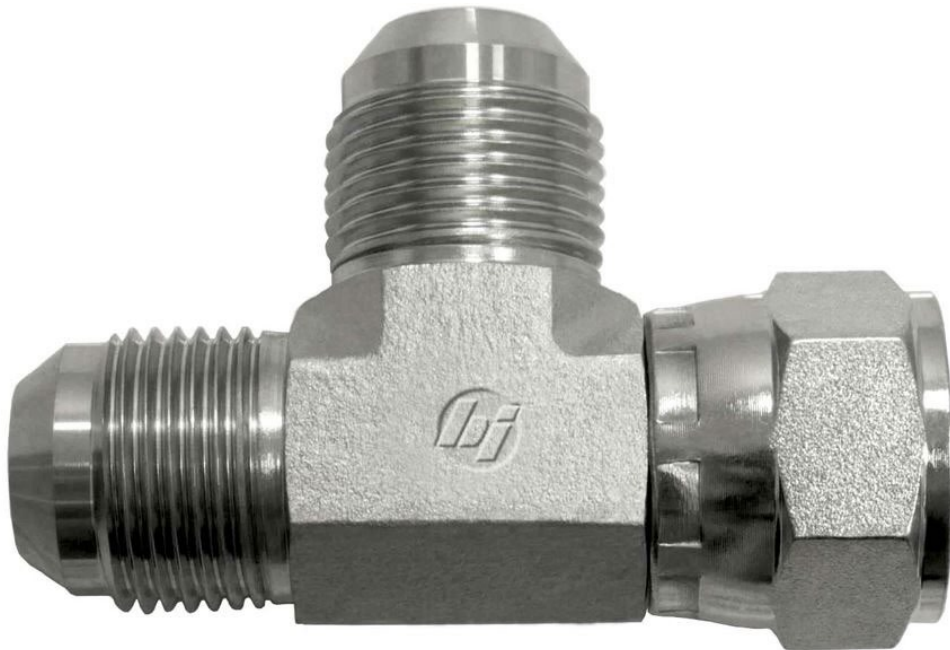
0304-C

Item	TUBE O.D.	B1 THREAD	L LGTH	C HEX	Material
<b>37-2030-02</b>	1/8	5/16-24	0.500	0.375	STEEL
<b>37-2030-03</b>	3/16	3/8-24	0.562	0.438	STEEL
<b>37-2030-04</b>	1/4	7/16-20	0.594	0.562	STEEL
<b>37-2030-05</b>	5/16	1/2-20	0.609	0.625	STEEL
<b>37-2030-06</b>	3/8	9/16-18	0.625	0.687	STEEL
<b>37-2030-08</b>	1/2	3/4-16	0.750	0.875	STEEL
<b>37-2030-10</b>	5/8	7/8-14	0.844	1.000	STEEL
<b>37-2030-12</b>	3/4	1 1/16-12	0.906	1.250	STEEL
<b>37-2030-14</b>	7/8	1-3/16-12	0.969	1.375	STEEL
<b>37-2030-16</b>	1	1 5/16-12	1.016	1.500	STEEL
<b>37-2030-20</b>	1-1/4	1 5/8-12	1.062	2.000	STEEL
<b>37-2030-24</b>	1-1/2	1-7/8-12	1.188	2.250	STEEL
<b>37-2030-32</b>	2	2 1/2-12	1.440	2.880	STEEL
<b>37-2030-40</b>	2 1/2	3-12	1.220	3.500	STEEL
<b>37-2030-48</b>	3	3-1/2-12			STEEL



## 37-9010 - (6602-FG)

JIC Male x JIC Swivel Female x JIC Male Branch Tee 37 Deg  
Cone



### **BRENNAN INDUSTRIES, EXTRAORDINARY FITTINGS**

In business for over 60 years, Brennan supplies more than 50,000 types of hydraulic fittings and adaptors in sizes ranging from 1/16 to 3 inches.

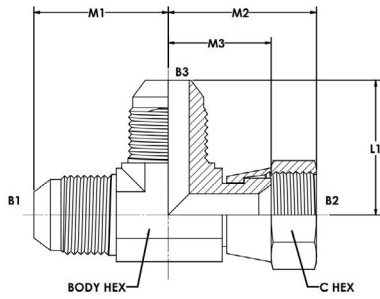
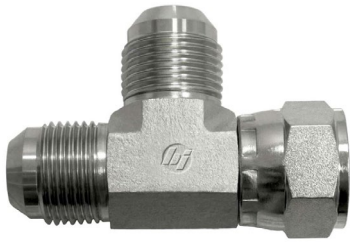
#### **Learn More at Brennan University:**

[Fittings 101](#)

[Tube Fittings Resources](#)

[Literature and Certifications](#)

**Tech Data Sheet: 71421**



# 37-9010 - (6602-FG)

## DESCRIPTION:

JIC MALE X JIC SWIVEL FEMALE X JIC MALE  
BRANCH TEE 37 DEG CONE

## UK PART NUMBER:

37-9010

## US PART NUMBER:

6602-FG

Item	A1 TUBE O.D.	A2 TUBE O.D.	A1 SAE 37 Deg	A2 SAE 37 Deg	A3 SAE 37 Deg	A1 DRILL	A2 DRILL	A3 DRILL	M LGTH	M5 LGTH	M6 LGTH
37-9010-03-03-03	3/16	3/16	3/8-24	3/8-24	3/8-24	0.125	0.125	0.125	0.83	0.67	1.00
37-9010-04-04-04	1/4	1/4	7/16-20	7/16-20	7/16-20	0.172	0.172	0.172	0.89	0.65	1.00
37-9010-04-06-06	1/4	3/8	7/16-20	9/16-18	9/16-18	0.172	0.172	0.297	1.050	0.875	1.250
37-9010-05-05-05	5/16	5/16	1/2-20	1/2-20	1/2-20	0.234	0.234	0.234	0.95	0.68	1.06
37-9010-06-06-04	3/8	1/4	9/16-18	9/16-18	7/16-20	0.297	0.297	0.172	1.060	0.875	1.250
37-9010-06-06-06	3/8	3/8	9/16-18	9/16-18	9/16-18	0.297	0.297	0.297	1.060	0.875	1.250
37-9010-06-08-06	3/8	1/2	9/16-18	3/4-16	9/16-18	0.297	0.391	0.297	1.140	0.950	1.380
37-9010-06-08-08	3/8	1/2	9/16-18	3/4-16	3/4-16	0.297	0.391	0.391	1.140	0.950	1.380
37-9010-08-08-04	1/2	1/2	3/4-16	3/4-16	7/16-20	0.391	0.391	0.172	1.250	0.950	1.380
37-9010-08-08-05	1/2	5/16	3/4-16	3/4-16	1/2-20	0.391	0.391	0.234	1.25	0.95	1.38
37-9010-08-08-06	1/2	3/8	3/4-16	3/4-16	9/16-18	0.391	0.391	0.297	1.25	0.95	1.38
37-9010-08-08-08	1/2	1/2	3/4-16	3/4-16	3/4-16	0.391	0.391	0.391	1.25	0.95	1.38
37-9010-08-08-12	1/2	3/4	3/4-16	3/4-16	1-1/16-12	0.391	0.391	0.609	1.420	1.130	1.550
37-9010-08-12-12	1/2	3/4	3/4-16	1-1/16-12	1-1/16-12	0.391	0.609	0.609	1.42	1.18	1.75
37-9010-08-20-20	1/2	1-1/4	3/4-16	1-5/8-12	1-5/8-12	0.391	1.078	1.078	1.72	1.67	2.31
37-9010-10-10-10	5/8	5/8	7/8-14	7/8-14	7/8-14	0.484	0.484	0.484	1.45	1.12	1.62
37-9010-10-10-12	5/8	3/4	7/8-14	7/8-14	1-1/16-12	0.484	0.484	0.609	1.54	1.15	1.66
37-9010-12-12-04	3/4	1/4	1-1/16-12	1-1/16-12	7/16-20	0.609	0.609	0.172	1.66	1.18	1.75
37-9010-12-12-12	3/4	3/4	1-1/16-12	1-1/16-12	1-1/16-12	0.609	0.609	0.609	1.66	1.18	1.75
37-9010-14-14-14	7/8	7/8	1-3/16-12	1-3/16-12	1-3/16-12	0.719	0.719	0.719	1.800	1.200	1.780
37-9010-16-16-12	1	3/4	1-5/16-12	1-5/16-12	1-1/16-12	0.844	0.844	0.609	1.81	1.40	2.00
37-9010-16-16-16	1	1	1-5/16-12	1-5/16-12	1-5/16-12	0.844	0.844	0.844	1.81	1.40	2.00
37-9010-16-20-20	1	1-1/4	1-5/16-12	1-5/8-12	1-5/8-12	0.844	1.078	1.078	2.01	1.67	2.31
37-9010-20-20-20	1-1/4	1-1/4	1-5/8-12	1-5/8-12	1-5/8-12	1.078	1.078	1.078	2.060	1.685	2.310
37-9010-24-24-24	1-1/2	1-1/2	1-7/8-12	1-7/8-12	1-7/8-12	1.312	1.312	1.312	2.330	1.870	2.590
37-9010-32-32-32	2	2	2-1/2-12	2-1/2-12	2-1/2-12	1.781	1.781	1.781	3.060	2.430	3.380