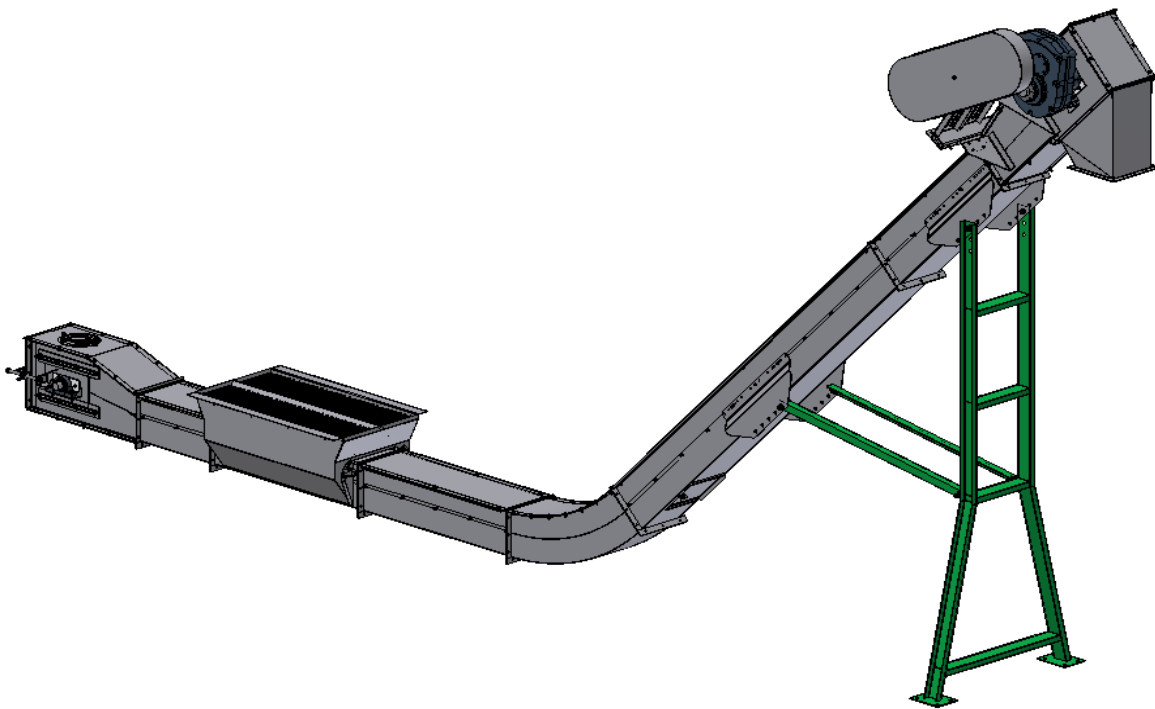




# Flightstar Drag Conveyor



OPERATIONS AND INSTALLATION MANUAL  
WITH PARTS LIST

# Doyle Equipment Mfg. Co., Inc

4001 Broadway

PO Box 3024

Quincy, IL 62305-3024

Phone: 1-800-788-8085

Fax: 1-217-223-3655

## **Flight-Star Owner's Manual**

You have just purchased a quality product from Doyle Equipment Mfg, which is the most user friendly and environmentally sound chain paddle conveyor in the world. The team at Doyle takes great pride in providing you quality equipment and backing that up with parts and service. Our long-term relationship with you as the customer is still our most important asset.

The Flight-Star you have purchased has been carefully engineered and manufactured under the rigid quality standards and will give you many years of satisfactory and dependable operation. Like all mechanical equipment, it will require adjustment and maintenance, especially the chain, so please read this section carefully for start-up and running of your Flight-Star Conveyor.

When your Flight-Star arrives, check against the "Bill of Materials & Assembly Drawings" for damaged or missing pieces. Inform the truck driver of any discrepancies **before** the driver leaves.



The need for safety cannot be stressed strongly enough in this manual. At Doyle Equipment Mfg. Co. we urge you to make safety your top priority when operating any equipment. We firmly advise that anyone allowed to operate this machine be thoroughly trained and tested, to prove they understand the fundamentals of safe operation.

## **Table of Contents**

Warranty	-----	3
Safety	-----	4
Installation	-----	7
Start-Up	-----	11
Maintenance	-----	13
1212 Parts and Service	-----	15
1616 Parts and Service	-----	30

# Warranty

Doyle Equipment Mfg. Co., Inc. (“Doyle”) has manufactured or is distributing the equipment to which this warranty is attached, and warrants to its original reseller including Dealers, Distributors and Original Equipment Manufacturers. This warranty will, under normal conditions of use and service, ensure that equipment will be free from material defects and faulty manufacturing for a period of one (1) year from date of delivery to the original user. For any equipment that does not conform to the aforesaid warranty within one (1) year from the date of delivery to the original user, Doyle will, at its option, repair, or replace parts. If Doyle determines that the defect is due to Doyle’s material or workmanship, Doyle will repair such defect during normal working hours. Doyle will be specifying repair locations. This warranty includes only the original equipment manufactured by Doyle, and not any parts that may be added to the equipment or replaced by the dealer or user. The installation of any non-Doyle manufactured parts in the equipment will void this basic Warranty in its entirety. In the event of a repair or replacement, the warranty period shall not be extended beyond the original warranty period.

## **The above warranties do not cover:**

1. Equipment that is damaged by abuse, neglect, accident, or modification.
2. Fluids, towing, telephone, travel and cleaning cost.
3. Consequential damages, inconvenience, or commercial loss.
4. The equipment itself if non-Doyle manufactured parts is installed on the equipment.

## **The above warranties do not apply under the following conditions**

1. When equipment is used for purposes for which it was not originally designed or intended.
2. When equipment is used under abnormal operating conditions
3. When the user fails to follow Doyle instructions regarding the equipment.

These warranties are extended only to the original dealer and are not transferable. In the event of a warranty claim, you should promptly notify Doyle by calling 1-800-788-8085, and provide the following:

1. Model number of the equipment
2. Date of delivery to the original user
3. Description of the difficulty encountered.

A representative of Doyle will contact you regarding instructions for repair, replacement, or refund, if the warranty claim can be validated.

Doyle Equipment Mfg. Co., Inc.  
6831 County Rd 334  
Palmyra, MO 63461  
Phone: 1-800-788-8085  
Fax: 1-217-223-3655

# Safety

Accidents can be prevented by recognizing the causes or hazards before an accident occurs...and doing something about them.

Regardless of the care used in the design and construction of this equipment, there are some areas that cannot be completely safe-guarded without interfering with accessibility and efficiency of operation.



THIS MESSAGE ALERT SYMBOL IDENTIFIES IMPORTANT SAFETY MESSAGES IN THIS MANUAL. WHEN YOU SEE THIS SYMBOL, BE ALERT TO THE POSSIBILITY OF PERSONAL INJURY AND CAREFULLY READ THE MESSAGE THAT FOLLOWS.

In this manual and on labels used on this machine, the words “DANGER”, “WARNING” and “CAUTION” are used to indicate the following:



Shall be used in major hazard situations where an immediate hazard presents a threat of death or serious injury to employees. Danger tags shall be used only in these situations.



May be used to represent a hazard level between "Caution" and "Danger," instead of the required "Caution" tag, provided that they have a signal word of "Warning," an appropriate major message, and otherwise meet the general tag criteria.



Shall be used in minor hazard situations where a non-immediate or potential hazard or unsafe practice presents a lesser threat of **employee** injury.

In this manual the words “IMPORTANT” and “NOTE” are used to indicate the following:

IMPORTANT: Highlights information that must be heeded.

NOTE: A reminder of other related information that needs to be considered.

## **Electrical Safety**



1. Electric motors and controls should be wired by a qualified electrician and meet all standards set by Federal, State, and Local Electrical Codes.
2. Make certain electric motors are grounded.
3. A magnetic starter should be used to protect your motor.
4. Your motor must have a manual reset button.
5. Electrical power must be disconnected before resetting you motor.
6. A main power disconnect switch, with the ability to be locked in the "OFF" position whenever work is to be done on the equipment or when the equipment is going to be left unattended.
7. Disconnect power before resetting motor overload

### **Caution**



Before removing conveyor covers or drive guards to attempt any adjustments of repairs, shut off and lock line disconnect switch.

## **Operation Qualifications**

Operation of this Drag Conveyor shall be limited to competent and experienced persons. Anyone operating a Conveyor must use good common sense and observe all safety procedures. In order to be a qualified operator, he/she must know and meet all other requirements, such as:

1. Some regulations specify that no one under the age of 16 may operate power machinery. It is your responsibility to know what these regulations are in your area or situation.
2. Current OSHA regulations state in part: "At the time of initial assignment and at least annually thereafter, the employer shall instruct EVERY employee in the safe operation and servicing of all equipment with which the employee is, or will be involved.
3. Unqualified persons are to STAY OUT of the work area.
4. A person who has not read and understood all operating and safety instructions is not qualified to operate the machinery

**FAILURE TO READ THIS MANUAL AND ITS SAFETY INSTRUCTIONS  
IS A MISUSE OF THE EQUIPMENT**



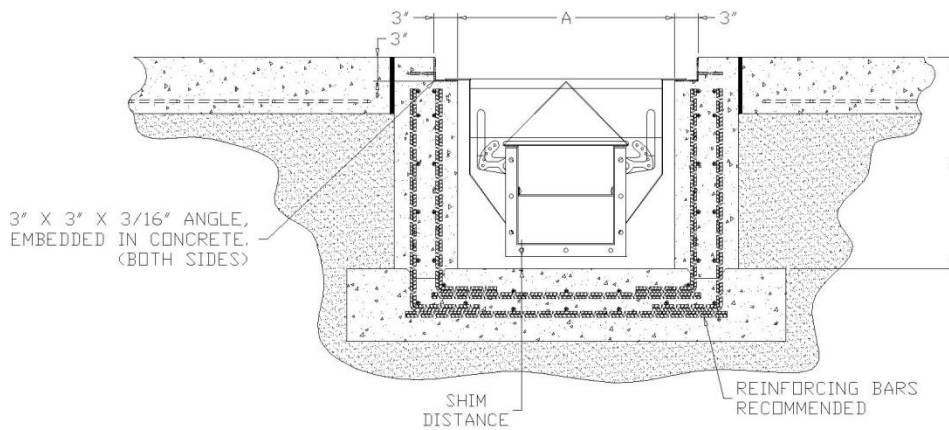
# Installation

## Conveyor Pit

Slope the floor towards open end or drain keeping the minimum depth at dimension "B"

When the conveyor is in a location (outdoors, etc.) where it is accessible to water runoff, it is recommended that the pit is deep enough to allow the conveyor to be shimmed out of the water. Moisture in the conveyor can cause the discharge to plug.

3" x 3" angle is only needed for the width of the hopper



**Figure 2:1**

	<b>A</b>	<b>B</b>
1212 Pit Dimensions	27.25"	26.25" Minimum
1616 Pit Dimension	31.25"	32" Minimum

## Under Track Models

Most installations will require reinforcing the rail by adding I-beams of RR Track section to the underside of track rails. Doyle has samples of Railroad Pit drawings which can be submitted to railroad engineers.



### **IMPORTANT**

In all cases, the customer must obtain approval from the Railroad before installing the unit.

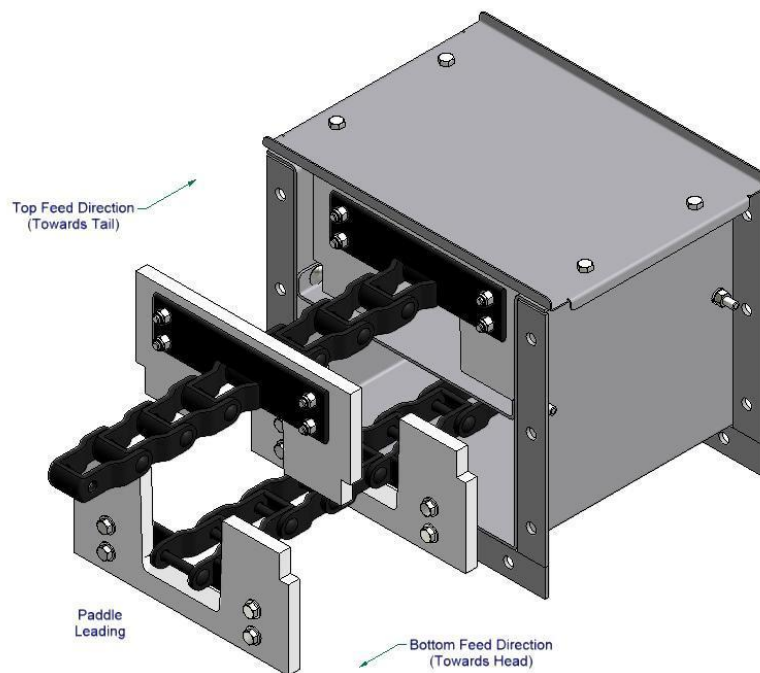
## **Assembly**

After the pit is built, the sections should be laid out end to end as they will be assembled. Starting with the tail section, remove the top covers. Be sure the chain adjusters are all the way in.

Align the next section that is to be assembled. The center pans are to remain in the section, unless necessary to make a connection. Pull the chain through the bottom of the sections before bolting the sections together. The chain needs to be pulled through the tail end enough to allow the chain to be attached in the top half of the next section.

## **Chain Installation**

Be Sure to always pull the chain in the direction it travels during operation. If you try to pull the flights through in the opposite direction, the flights may catch or jam in the unit. Make sure UHMW conveying flights are all facing in the same direction. The paddles are to be on the leading side of the chain. Your Flight-Star is supplied with all flights.



**Figure 2:2**

Make sure end flanges are clean and free of dirt. Apply adhesive gasket or calking to provide water and dust-tight seals (Not furnished with unit). Inspect how the bottom and sides join together. The flange sides can also be used to line up the sections if the inside of the section can't be seen. They must be flush with each other or the conveyor paddles can be damaged or worn out prematurely. It may be necessary to use a Port-a-Power to obtain a smooth alignment. The smoother the joint, the quieter the operation will be. Once lined up properly tighten the bolts on the flanges.

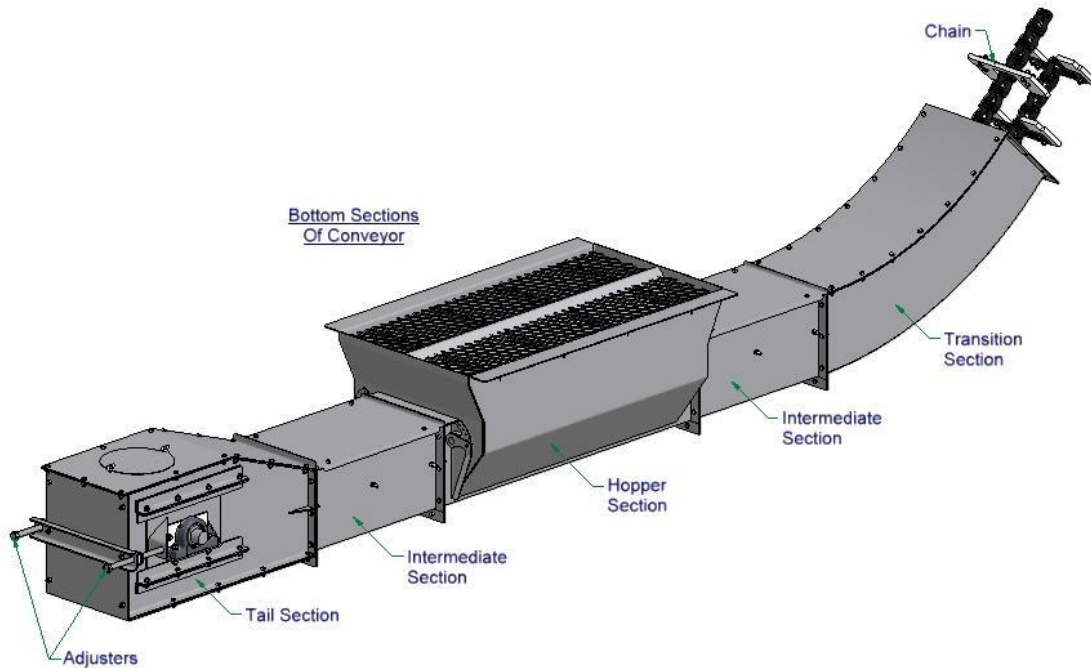


## **Chain Installation (continued)**

### **Bottom Sections**

When the bottom portion of the conveyor is assembled, including sections from the tail to the transition, set the assembly into the pit. This assembly is to be leveled with treated lumber or stainless steel legs (not supplied).

**Note:** Do not anchor until the conveyor is completely assembled. Conveyor may need to be moved to get right discharge position.



**Figure 2:3**

Assemble the remaining sections of the conveyor, including the head section, making sure all joints are flush. This may require the removal of the top covers. Follow the steps for the bottom half to bolt the remaining sections together.

Once the sections are together, raise the upper half of the conveyor with a crane and place it to the angle to which it will be when completed. Connect the chains together and loosely bolt the upper portion of the conveyor to the portion in the pit. Remember to keep seams flush. Check to see if the discharge is where it needs to be. Then bolt all stands and supports to the conveyor. The larger the section, the more supports needed to keep the conveyor from buckling. If not sure if there are enough supports, install in two or more sections.

**Note:** It is very important that the discharge is as straight as possible.

**Note:** Doyle Equipment Manufacturing recommends that stand or supports be installed no greater than 15 feet apart.

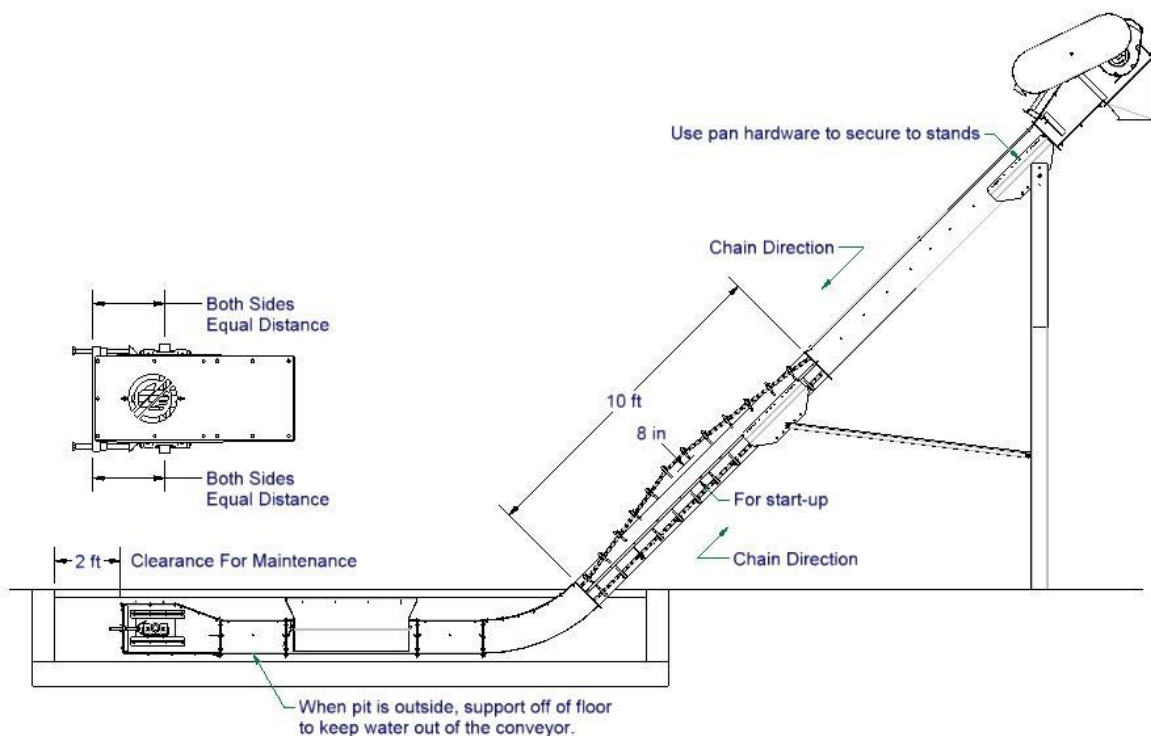
## **Chain Installation (continued)**

When satisfied with where the conveyor is positioned, anchor the stands, hopper, tail section, etc. **DO NOT INSTALL COVERS OR CENTER PANS TO UPPER SECTIONS.**

When the bottom chain is in place in one piece, the center pans need to be bolted in place. The center pans, like the sections, need to be flush. This will help reduce wear and noise. Once center pans are installed the top chain is to be placed in the top section and fastened to the bottom chain.

With the take up bearings all the way in and cover on transition, use a come-a-long to pull the two top halves of the chain snugly together. Determine where the chain will join together as accurately as possible, and then connect the chain.

Adjust the take up bearings equal distance on both sides of the tail section. When adjusted properly for startup, a paddle should be able to be lifted 8 inches off the center pan in a 10 foot section. (8 inches is for startup only). Check and tighten all nuts and bolts. Place all top covers on the conveyor. Make sure the gearbox is full of lubricant.



**Figure 2:4**

# Start-Up



## **IMPORTANT**

*Do not attempt to run the conveyor  
Without all covers and guards installed*

Before connecting to power, remove the belt guard and belts. Check electric motor rotation. Rotate the gearbox shaft by hand and make sure the chain is running free without catching at any joints.

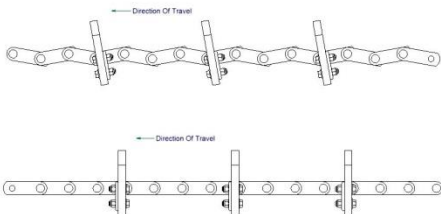
**Note:** The correct rotation will be the bottom chain pulling material towards the head section. (See Figure 2:4). DO NOT RUN CHAIN BACKWARDS. It may cause damage to the chain and paddles.

Properly install belts, guards, and all covers on the conveyor, then start the conveyor and listen for hammering noises. If they do exist, the problem must be found and corrected before major damage or undue wear occurs.

## **Final Chain Adjustment**

Proper conveyor chain tension is important to the successful start-up and operation of your Flight-Star. If the chain tension is too great, operating power required and components wear will be accelerated. If the chain tension is too loose, loss of capacity, binding, and excess flight wear can result.

If the chain is too loose, the flights will sag forward (See Figure 2:5). This is the way the flights will look before you have adjusted the take-up. While the unit is not running and empty of material, loosen chain until flights lean forward. You can see this in the bottom of the hopper.



**Figure 2:5**

Slowly tighten the chain tension until flights just barely stand straight up vertically

Then loosen the tension 1/2 to 1 full turn of the adjusting nut on both sides

This is your starting point. Mark the top of the outer most adjusting nut as your starting point at tail. Turn the unit on and listen to the chain noises. Tighten the adjusting bolt one full turn and notice the change in the noise. If the noise level increases, look for places that are making the loudest noises and check if the chain is catching on the connection flange. If it sounds better, keep turning the adjusting nut one full turn at a time until it sounds the smoothest. If, on your first adjustment from starting point, it sounds the best, then turn in the opposite direction and follow the same procedure in reverse.

Tighten the jam nuts, making sure the bearings are adjusted equally.  
Run material through the conveyor making sure that the material discharges properly.  
Listen for any new or unusual noises.

**Note:** When discharging onto a belt conveyor, it is recommended that a weight breaker be installed in the belt conveyor inlet hopper.

## **Installer/Contractor Responsibilities**



### **CAUTION**

*Before allowing operators to use this conveyor, all weather covers must be in place on troughs and guards must be installed on all moving parts of the drive.*

Because of the variety of installation applications, the operating procedure can only be described in a general manner as follows:

1. Check and retighten all bolts.
2. Check to see that the drive reducer has the recommended oil level.
3. Run the conveyor empty and listen for hammering noises. If they exist, this potential problem must be found and corrected before major damage or undue wear occurs.
4. Introduce product and check for evidence of:
  - A. Inlet transition accepting product freely.
  - B. Product being conveyed at rated capacity.
  - C. Machine running quietly with no intermittent loud noises.
  - D. Proper operation of discharge.
  - E. Ample slope in discharge terminal to allow product to discharge freely.

After the installer/contractor is satisfied that the conveyor is operating properly, it is their responsibility to point out the following information to the operator:

1. The importance of following recommended procedures contained in this manual.
2. A basic explanation of the operating principles of the conveyor and how it differs from other types of conveying systems.
3. Machinery that must be running prior to starting the conveyor (electrical interlocks).
4. Location of the start/stop station(s).
5. Location of the electrical disconnects.
6. Operation of intermediate discharges and valves.
7. Shutdown sequences.
8. How to clear the system of plugs, foreign objects, etc.
9. Instructions on various maintenance procedures.
10. That the customer is satisfied with the installation.
11. If electric is not hooked up, make arrangements to come back for startup.



### **WARNING**

- Moisture in conveyor will cause discharge to plug.
- Operate conveyor weekly to keep chain from freezing up.
- Do not run conveyor with covers off.
- Do not operate chain backwards.
- When discharging material onto a belt conveyor, a weight breaker should be installed on the belt conveyor hopper.

# Maintenance

## Maintenance Schedule



### **WARNING**

*Do not put hands inside or near the unit or moving parts while the unit is running. Do not rotate sheaves by turning the belts by because the unit will drift before stopping.*



### **NOTE**

*Under all circumstances, the following Safety precautions must be strictly adhered to:*

*All units must be de-energized and the motor starter lockout is under the control of the maintenance personnel performing the work.*

- 1.** At the end of each production day, sweep around hopper area and put spillage into the Flight-Star and let the unit run for 5 to 10 minutes or until unit is completely empty and clean. Check at discharge to see if materials are still coming out. When finished, be sure to cover the inlet hopper to prevent water from entering. This will help minimize oxidation of the chain and also keep ice from forming in the hopper during winter months. Run Conveyor at least once a week.
- 2.** When the Flight-Star is being utilized, the take-up nuts, which lock the take-up rod in position, should be checked daily. Also, check for material build-up under and around the tail sprocket and clean out.
- 3.** Grease the bearings once a year with 4 to 6 pumps of grease or until each bearing has been partially flushed with new grease.
- 4.** When the Flight-Star is being utilized, the bearings should be greased on a weekly basis until new grease shows at the seals
- 5.** Inspect V-belts for damage, wear, and proper tension and, adjust or replace as required. The correct tension for drive belts is approximately about 1/4 inch of deflection.
- 6.** Once a year, check all set screws and securely tighten any loose screws. Setscrews are located in the head and tail bearings, head and tail sprockets, reducer bushings (both sides), and both sheave and sprocket bushings.
- 7.** You should pump 2 shots of grease into motor bearings once every 2 years. The grease fittings are located under the caps on the fan cover. A polyurea-thickened grease should be unless special grease is specified on motor plate.
- 8.** The lubricant (refer to manual for proper level) should be changed once a year minimum. Twice a year is recommended. The drain plug on the gearbox, which is magnetized, should be cleaned of all metal shavings and foreign material every oil change. This is to clean out any metal shavings that have accumulated or, water resulting from condensation during idle periods. ISO220 EP 5 (SH7220 Synthetic) or IS150 (75W90 Synthetic) oil type to be used to add or replace existing oil.
- 9.** Inspect chain for stiffness on sidebars due to corrosion, improper chain tension, damage or wear. Adjust or replace when required.

## **Maintenance Schedule (continued)**

- 10.** Inspect for loose or missing bolts and worn, broken or missing flights and repair or replace when required.
- 11.** Inspect sprockets for damage, wear, alignment and setscrew for tightness. Repair or replace when required.
- 12.** Inspect intermediate sections, curve, discharge, receiving hopper and take-up area. When material builds up in the curve and intermediate sections, it may be necessary to remove top cover and center pan and clean.

### **When the Flight-Star is being utilized, use the following guidelines:**

If you have just put material through the unit and it will not be used for 5 days or more, run the conveyor. After the unit has been used, let the unit run for 5 to 10 minutes or until all of the material has been discharged.

### **When the Flight-Star is not being utilized for extended periods of time, use the following guidelines:**

Run the unit, empty, as often as possible. Running 3 times a week for 5 to 10 minutes is sufficient.

Remember that this is only a guideline and more frequent running may be required to prevent chain stiffness.

While you are doing these periodic inspections you should visually check the flights (see note #9), take-up assembly (see notes #2 & #4), and the chain (see lead-in paragraph to note #9).

Normally, when the unit is sitting for long periods of time, it has been found that best results are to run the conveyor at least once a week.

To adjust the chain to proper tension, refer to the "Final Adjustment" section, of the installation portion of this manual.

# SPARE PARTS AND SERVICE

For item numbers and part descriptions, refer to the bill of material, assembly drawings, and individual manuals for the millwright or contractor items needed that are sent along with this manual.

Should you need technical assistance or replacement parts, contact:

## **DOYLE EQUIPMENT MFG. CO.**

6831 County Rd 334

Palmyra, MO

Phone: 1-217-222-1592 / 1-800-788-8085

Fax: 217-223-3655

### **Model 1212 - Drive Over Grate**



#### **Part No.**

#### **Description**

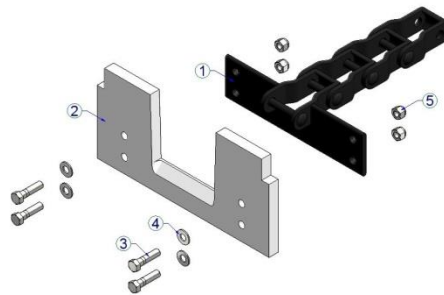
22-706-01

12" Drive Over Grate

22-706-02

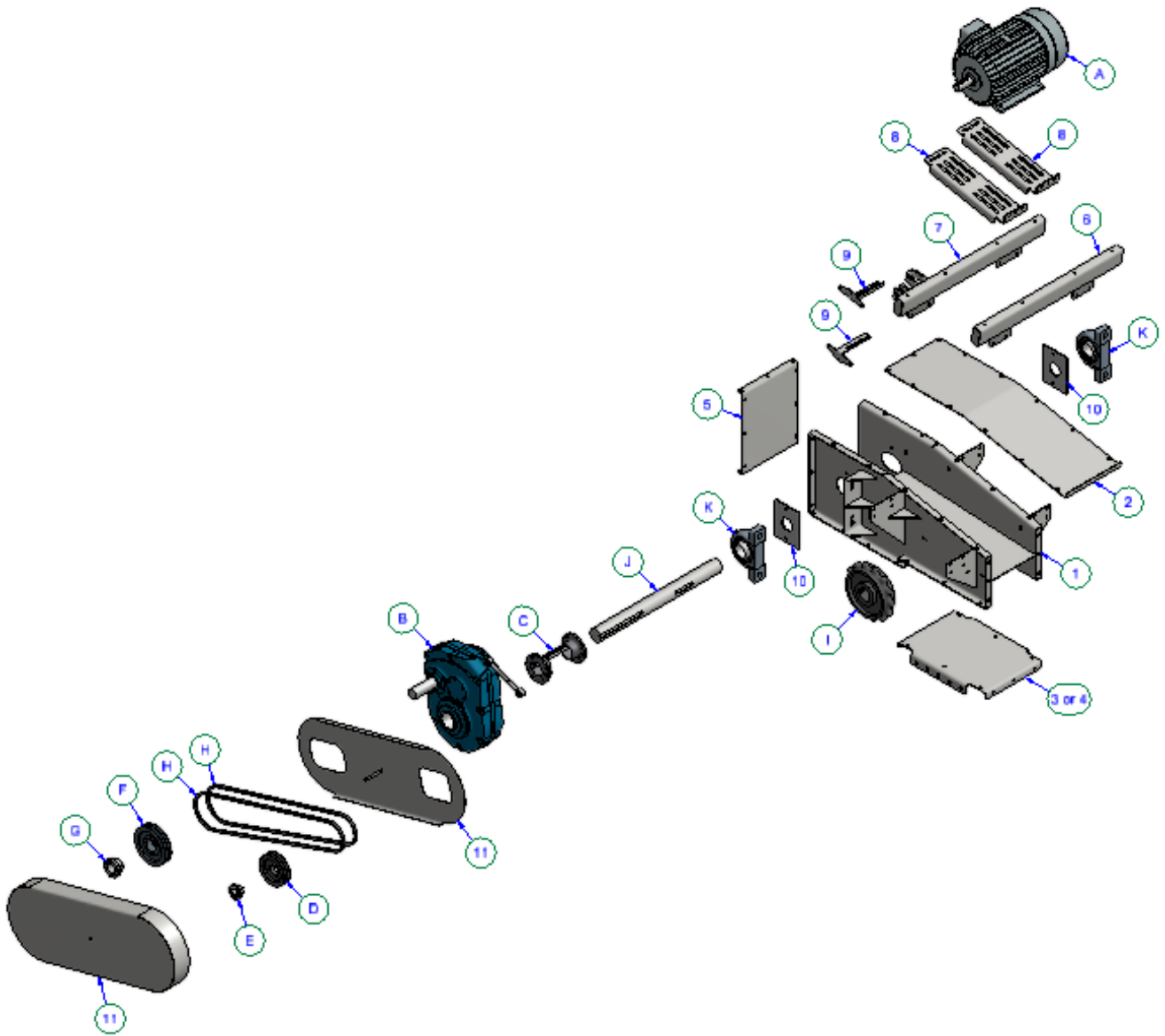
24" Drive Over Grate

### **Model 1212 - Chain Section**



<b><u>Item</u></b>	<b><u>Part No.</u></b>	<b><u>Quantity</u></b>	<b><u>Description</u></b>
<b>0</b>	<b>22-720-105</b>		<b>10.5" Chain Section</b>
1	CN53	1	Chain Section, 3 Links, 1 Link Attachment
2	PC1	1	UHMW Paddle
3	HD239	4	3/8" x 1-1/2" Hex Bolt, SS
4	HD43	4	3/8" Flat Washer, SS
5	HD198	4	3/8" Nylock Nut, SS

## Model 1212 - Drive Section





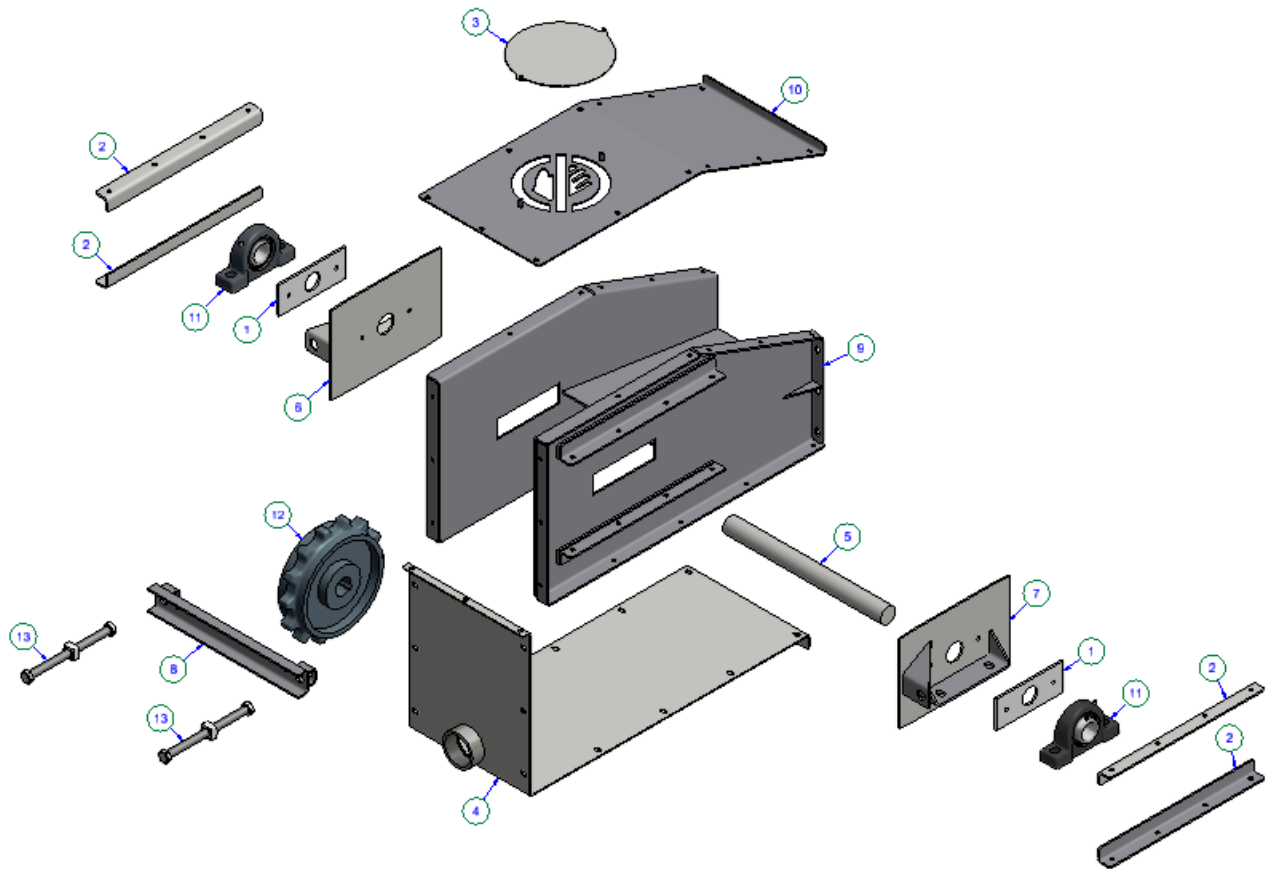
## Model 1212 - Drive Section Parts List

22-750-071	1212, 7.5HP, RH, 120TPH	22-752-071	1212 w/Bracket, 7.5HP, RH, 120TPH
22-750-072	1212, 7.5HP, LH, 120TPH	22-752-072	1212 w/Bracket, 7.5HP, LH, 120TPH
22-751-071	1212, 7.5HP, RH, 90TPH	22-753-071	1212 w/Bracket, 7.5HP, RH, 90TPH
22-751-072	1212, 7.5HP, LH, 90TPH	22-753-072	1212 w/Bracket, 7.5HP, LH, 90TPH
22-750-101	1212, 10HP, RH, 120TPH	22-752-101	1212 w/Bracket, 10HP, RH, 120TPH
22-750-102	1212, 10HP, LH, 120TPH	22-752-102	1212 w/Bracket, 10HP, LH, 120TPH
22-751-101	1212, 10HP, RH, 90TPH	22-753-101	1212 w/Bracket, 10HP, RH, 90TPH
22-751-102	1212, 10HP, LH, 90TPH	22-753-102	1212 w/Bracket, 10HP, LH, 90TPH
22-750-151	1212, 15HP, RH, 120TPH	22-752-151	1212 w/Bracket, 15HP, RH, 120TPH
22-750-152	1212, 15HP, LH, 120TPH	22-752-152	1212 w/Bracket, 15HP, LH, 120TPH
22-751-151	1212, 15HP, RH, 90TPH	22-753-151	1212 w/Bracket, 15HP, RH, 90TPH
22-751-152	1212, 15HP, LH, 90TPH	22-753-152	1212 w/Bracket, 15HP, LH, 90TPH
22-750-201	1212, 20HP, RH, 120TPH	22-752-201	1212 w/Bracket, 20HP, RH, 120TPH
22-750-202	1212, 20HP, LH, 120TPH	22-752-202	1212 w/Bracket, 20HP, LH, 120TPH
22-751-201	1212, 20HP, RH, 90TPH	22-753-201	1212 w/Bracket, 20HP, RH, 90TPH
22-751-202	1212, 20HP, LH, 90TPH	22-753-202	1212 w/Bracket, 20HP, LH, 90TPH
22-750-251	1212, 25HP, RH, 120TPH	22-752-251	1212 w/Bracket, 25HP, RH, 120TPH
22-750-252	1212, 25HP, LH, 120TPH	22-752-252	1212 w/Bracket, 25HP, LH, 120TPH
22-751-251	1212, 25HP, RH, 90TPH	22-753-251	1212 w/Bracket, 25HP, RH, 90TPH
22-751-252	1212, 25HP, LH, 90TPH	22-753-252	1212 w/Bracket, 25HP, LH, 90TPH

<u>Item</u>	<u>Part No.</u>	<u>Quantity</u>	<u>Description</u>
1	22-926	1	Head Section Weldment
2	22-512	1	Top Cover
3	22-513	1	Bottom Cover
4	22-10-331-1001	1	Bottom Cover Bracket
5	22-516	1	Front Cover
6	22-884	1	Motor Mount Tube Weldment, Rear
7	22-885	1	Motor Mount Tube Weldment, Front
8	32-158	2	Motor Plate
9	32-224	2	Belt Guard Bracket
10	22-592	2	Shaft Seal
11	22-711-080	1	Belt Guard Assembly

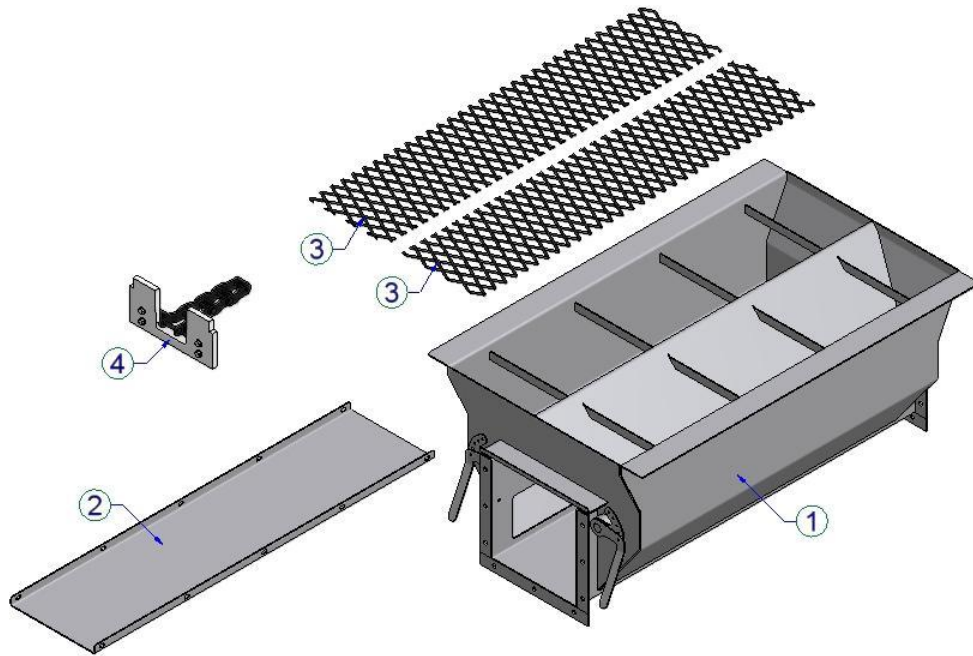
<u>A</u>	<u>B</u>	<u>C</u>	<u>D</u>	<u>E</u>	<u>F</u>	<u>G</u>	<u>H</u>	<u>I</u>	<u>J</u>	<u>K</u>
<u>Motor</u>	<u>Gearbox</u>	<u>Tapered Bushing</u>	<u>Sheave (Motor)</u>	<u>Bushing (Motor)</u>	<u>Sheave (Gearbox)</u>	<u>Bushing (Gearbox)</u>	<u>V-Belt</u>	<u>Sprocket</u>	<u>Shaft</u>	<u>Bearing</u>
<b>7.5 HP</b>	PT3203-25	0279-00034	2B6.4 SDS	SDS 1-3/8"	2B8.0 SK	SK 1-1/4"	B76 B88	2-3/16"	2-15/16" x29-1/2"	2-3/16"
MT14	PC221	PC225	SV20	BS18	SV41	BS25	710	SK53	22-581	BR41
<b>10 HP</b>	PT4207-25	0279-00048	2B6.4 SDS	SDS 1-3/8"	2B8.0 SK	SK 1-7/16"	B76 B88	2-3/16"	2-15/16" x30-1/4"	2-3/16"
MT2	PC235	PC236	SV20	BS18	SV41	BS28		SK53	22-582	BR41
<b>15 HP</b>	PT5215-25	0279-00064	2B6.4 SDS	SDS 1-5/8"	2B8.0 SK	SK 1-15/16"	B76 B88	2-15/16"	2-15/16" x32"	2-15/16"
MT3	PC222	PC223	SV20	BS37	SV41	BS60	985	SK52	22-594	BR36
<b>20 HP</b>	PT6307-25	0279-00078	2B6.4 SDS	SDS 1-5/8"	2B8.0 SK	SK 2-3/16"	B76 B88	2-15/16"	2-15/16" x33"	2-15/16"
MT5	PC224	PC226	SV20	BS37	SV41	BS44	1130	SK52	22-595	BR36
<b>25 HP</b>	PT6307-25	0279-00078	2B6.4 SDS	SDS 1-7/8"	2B8.0 SK	SK 2-3/16"	B76 B88	2-15/16"	2-15/16" x33"	2-15/16"
MT19	PC224	PC226	SV20	BS45	SV41	BS44		SK52	22-595	BR36

## Model 1212 - Tail Section



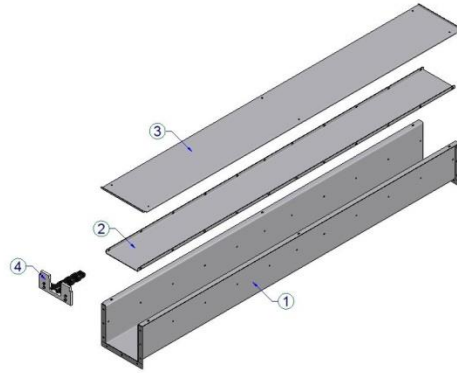
<u>Item</u>	<u>Part No.</u>	<u>Quantity</u>	<u>Description</u>
<b>0</b>	<b>22-702-500</b>		<b>Tail Section w/Chain &amp; Hardware</b>
1	22-034	2	Shaft Seal
2	22-038	4	Bearing Slide Angle
3	22-055	1	Inspection Cover
4	22-11-331-1001	1	Bottom/Back Panel Weldment
5	22-149	1	Tail Shaft 1-15/16"
6	22-898	1	Left Take-Up Weldment
7	22-899	1	Right Take-Up Weldment
8	22-900	1	Take-Up Cross Support Weldment
9	22-901	1	Tail Section Weldment
10	22-902	1	Tail Cover Weldment
11	BR24	2	Bearing, 1-15/16" Pillow Block
12	SK48	1	Sprocket, 14 Tooth, 1-15/16" Bore
13	SN1	2	Take-Up Bolt Assembly

## Model 1212 - Hoppers



<u>Item</u>	<u>Part No.</u>	<u>Quantity</u>	<u>Description</u>
<b>0</b>	<b>22-705-502</b>		<b>2' Hopper Section, w/Chain &amp; Hardware</b>
1	22-705-520	1	2' Hopper Weldment
2	22-1061	1	2' Pan
3	22-12-131-1002	2	2' Screen Section
4	22-720-105	4.75	10.5" Chain Section
<b>0</b>	<b>22-705-503</b>		<b>3' Hopper Section, w/Chain &amp; Hardware</b>
1	22-705-530	1	3' Hopper Weldment
2	22-1059	1	3' Pan
3	22-12-131-1003	2	3' Screen Section
4	22-720-105	7	10.5" Chain Section
<b>0</b>	<b>22-705-504</b>		<b>4' Hopper Section, w/Chain &amp; Hardware</b>
1	22-705-540	1	4' Hopper Weldment
2	22-1057	1	4' Pan
3	22-12-131-1004	2	4' Screen Section
4	22-720-105	9.25	10.5" Chain Section

## Model 1212 - Straight Sections

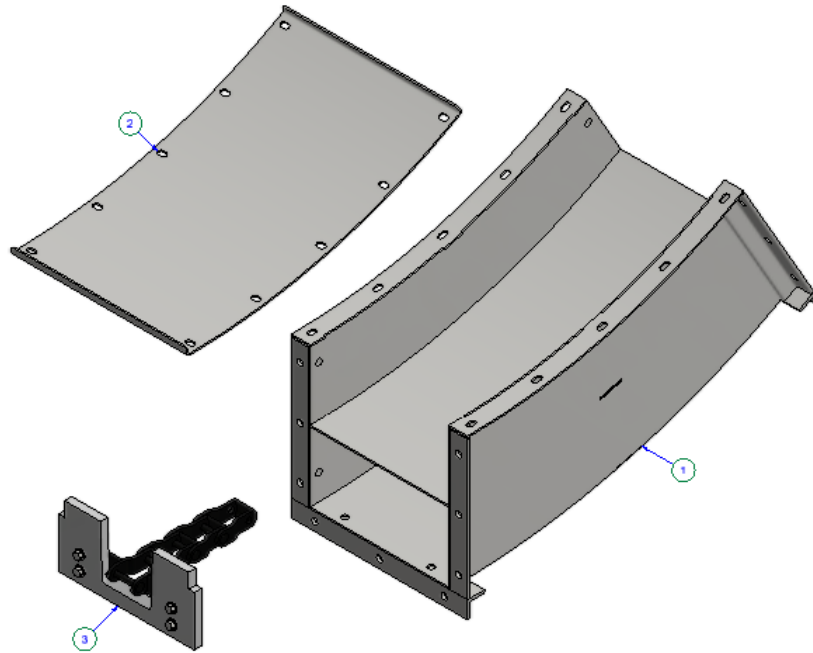


<u>Item</u>	<u>Part No.</u>	<u>Quantity</u>	<u>Description</u>
<b>0</b>	<b>22-703-510</b>		<b>1' Straight Section, w/Chain &amp; Hardware</b>
1	22-9020	1	1' Straight Section Weldment
2	09-1063	1	1' Center Pan
3	00-126	1	1' Cover
4	22-720-105	2.5	10.5" Chain Section
<b>0</b>	<b>22-703-515</b>		<b>1' 6" Straight Section, w/Chain &amp; Hardware</b>
1	22-9019	1	1' 6" Straight Section Weldment
2	09-1062	1	1' 6" Center Pan
3	00-125	1	1' 6" Cover
4	22-720-105	3.5	10.5" Chain Section
<b>0</b>	<b>22-703-520</b>		<b>2' Straight Section, w/Chain &amp; Hardware</b>
1	22-9018	1	2' Straight Section Weldment
2	09-1061	1	2' Center Pan
3	00-124	1	2' Cover
4	22-720-105	4.5	10.5" Chain Section
<b>0</b>	<b>22-703-525</b>		<b>2' 6" Straight Section, w/Chain &amp; Hardware</b>
1	22-9017	1	2' 6" Straight Section Weldment
2	09-1060	1	2' 6" Center Pan
3	00-123	1	2' 6" Cover
4	22-720-105	5.75	10.5" Chain Section
<b>0</b>	<b>22-703-530</b>		<b>3' Straight Section, w/Chain &amp; Hardware</b>
1	22-9016	1	3' Straight Section Weldment
2	09-1059	1	3' Center Pan
3	00-122	1	3' Cover
4	22-720-105	7	10.5" Chain Section
<b>0</b>	<b>22-703-535</b>		<b>3' 6" Straight Section, w/Chain &amp; Hardware</b>
1	22-9015	1	3' 6" Straight Section Weldment
2	09-1058	1	3' 6" Center Pan
3	00-121	1	3' 6" Cover
4	22-720-105	8	10.5" Chain Section
<b>0</b>	<b>22-703-540</b>		<b>4' Straight Section, w/Chain &amp; Hardware</b>
1	22-9014	1	4' Straight Section Weldment
2	09-1057	1	4' Center Pan
3	00-120	1	4' Cover
4	22-720-105	9.25	10.5" Chain Section
<b>0</b>	<b>22-703-545</b>		<b>4' 6" Straight Section, w/Chain &amp; Hardware</b>
1	22-9013	1	4' 6" Straight Section Weldment
2	09-1056	1	4' 6" Center Pan
3	00-119	1	4' 6" Cover
4	22-720-105	10.5	10.5" Chain Section

## Straight Sections (Continued)

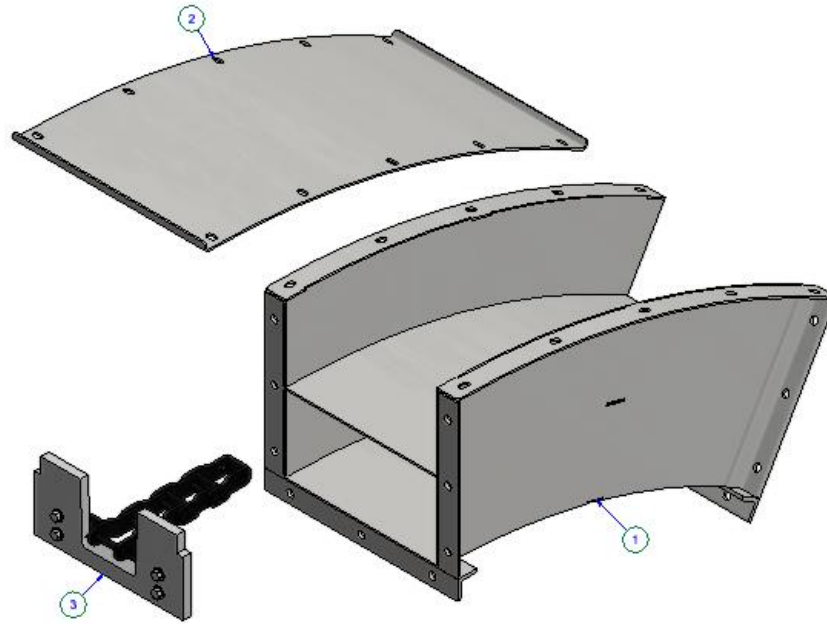
<u>Item</u>	<u>Part No.</u>	<u>Quantity</u>	<u>Description</u>
<b>0</b>	<b>22-703-550</b>		<b>5' Straight Section, w/Chain &amp; Hardware</b>
1	22-9012	1	5' Straight Section Weldment
2	09-1055	1	5' Center Pan
3	00-118	1	5' Cover
4	22-720-105	11.5	10.5" Chain Section
<b>0</b>	<b>22-703-555</b>		<b>5' 6" Straight Section, w/Chain &amp; Hardware</b>
1	22-9011	1	5' 6" Straight Section Weldment
2	09-1054	1	5' 6" Center Pan
3	00-117	1	5' 6" Cover
4	22-720-105	12.75	10.5" Chain Section
<b>0</b>	<b>22-703-560</b>		<b>6' Straight Section, w/Chain &amp; Hardware</b>
1	22-9010	1	6' Straight Section Weldment
2	09-1053	1	6' Center Pan
3	00-116	1	6' Cover
4	22-720-105	13.75	10.5" Chain Section
<b>0</b>	<b>22-703-565</b>		<b>6' 6" Straight Section, w/Chain &amp; Hardware</b>
1	22-9009	1	6' 6" Straight Section Weldment
2	09-1052	1	6' 6" Center Pan
3	00-115	1	6' 6" Cover
4	22-720-105	15	10.5" Chain Section
<b>0</b>	<b>22-703-570</b>		<b>7' Straight Section, w/Chain &amp; Hardware</b>
1	22-9008	1	7' Straight Section Weldment
2	09-1051	1	7' Center Pan
3	00-114	1	7' Cover
4	22-720-105	16	10.5" Chain Section
<b>0</b>	<b>22-703-575</b>		<b>7' 6" Straight Section, w/Chain &amp; Hardware</b>
1	22-9007	1	7' 6" Straight Section Weldment
2	09-1050	1	7' 6" Center Pan
3	00-113	1	7' 6" Cover
4	22-720-105	17.25	10.5" Chain Section
<b>0</b>	<b>22-703-580</b>		<b>8' Straight Section, w/Chain &amp; Hardware</b>
1	22-9006	1	8' Straight Section Weldment
2	09-1049	1	8' Center Pan
3	00-112	1	8' Cover
4	22-720-105	18.5	10.5" Chain Section
<b>0</b>	<b>22-703-585</b>		<b>8' 6" Straight Section, w/Chain &amp; Hardware</b>
1	22-9005	1	8' 6" Straight Section Weldment
2	09-1048	1	8' 6" Center Pan
3	00-111	1	8' 6" Cover
4	22-720-105	19.5	10.5" Chain Section
<b>0</b>	<b>22-703-590</b>		<b>9' Straight Section, w/Chain &amp; Hardware</b>
1	22-9004	1	9' Straight Section Weldment
2	09-1047	1	9' Center Pan
3	00-110	1	9' Cover
4	22-720-105	20.5	10.5" Chain Section
<b>0</b>	<b>22-703-595</b>		<b>9' 6" Straight Section, w/Chain &amp; Hardware</b>
1	22-9003	1	9' 6" Straight Section Weldment
2	09-1046	1	9' 6" Center Pan
3	00-109	1	9' 6" Cover
4	22-720-105	21.75	10.5" Chain Section
<b>0</b>	<b>22-703-500</b>		<b>10' Straight Section, w/Chain &amp; Hardware</b>
1	22-9002	1	10' Straight Section Weldment
2	09-1045	1	10' Center Pan
3	00-108	1	10' Cover
4	22-720-105	22.75	10.5" Chain Section

## Model 1212 - Curve Sections



<u>Item</u>	<u>Part No.</u>	<u>Quantity</u>	<u>Description</u>
<b>0</b>	<b>22-704-510</b>		<b>10 Degree Curve Section, w/Chain &amp; Hardware</b>
1	22-9021	1	10 Degree Curve Weldment
2	22-1121	1	Cover, 10 Degree Curve
3	22-720-105	2	10.5" Chain Section
<b>0</b>	<b>22-704-515</b>		<b>15 Degree Curve Section, w/Chain &amp; Hardware</b>
1	22-9022	1	15 Degree Curve Weldment
2	22-1122	1	Cover, 15 Degree Curve
3	22-720-105	2.75	10.5" Chain Section
<b>0</b>	<b>22-704-520</b>		<b>20 Degree Curve Section, w/Chain &amp; Hardware</b>
1	22-9023	1	20 Degree Curve Weldment
2	22-1123	1	Cover, 20 Degree Curve
3	22-720-105	3.75	10.5" Chain Section
<b>0</b>	<b>22-704-525</b>		<b>25 Degree Curve Section, w/Chain &amp; Hardware</b>
1	22-9024	1	25 Degree Curve Weldment
2	22-1124	1	Cover, 25 Degree Curve
3	22-720-105	4.5	10.5" Chain Section
<b>0</b>	<b>22-704-530</b>		<b>30 Degree Curve Section, w/Chain &amp; Hardware</b>
1	22-9025	1	30 Degree Curve Weldment
2	22-1125	1	Cover, 30 Degree Curve
3	22-720-105	5.5	10.5" Chain Section
<b>0</b>	<b>22-704-535</b>		<b>35 Degree Curve Section, w/Chain &amp; Hardware</b>
1	22-9026	1	35 Degree Curve Weldment
2	22-1126	1	Cover, 35 Degree Curve
3	22-720-105	6.5	10.5" Chain Section
<b>0</b>	<b>22-704-540</b>		<b>40 Degree Curve Section, w/Chain &amp; Hardware</b>
1	22-9027	1	40 Degree Curve Weldment
2	22-1127	1	Cover, 40 Degree Curve
3	22-720-105	7.25	10.5" Chain Section
<b>0</b>	<b>22-704-545</b>		<b>45 Degree Curve Section, w/Chain &amp; Hardware</b>
1	22-9028	1	45 Degree Curve Weldment
2	22-1128	1	Cover, 45 Degree Curve
3	22-720-105	8.25	10.5" Chain Section

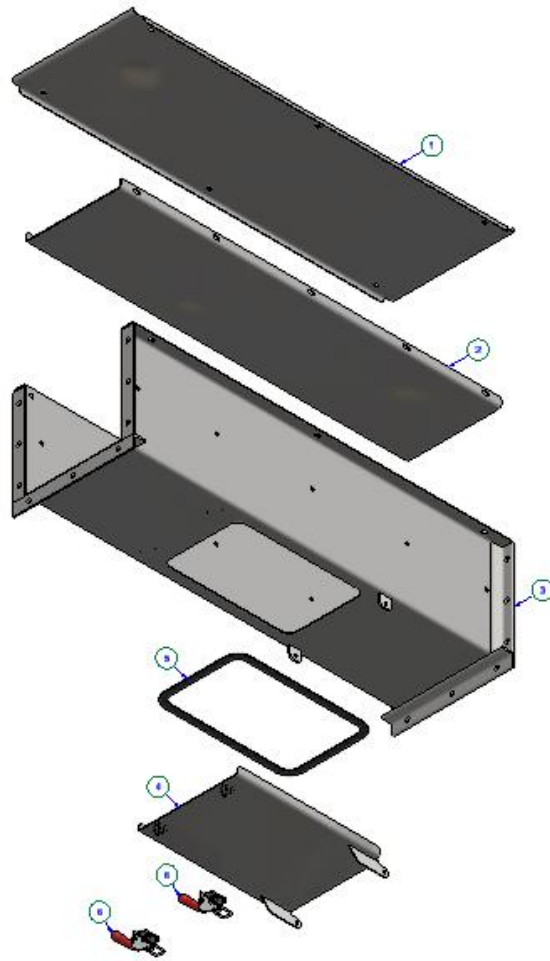
## Model 1212 - Reverse Curve Sections



<u>Item</u>	<u>Part No.</u>	<u>Quantity</u>	<u>Description</u>
<b>0</b>	<b>22-707-510</b>		<b>10 Degree Reverse Curve Section</b>
1	22-15-830-1010	1	10 Degree Reverse Curve Weldment
2	22-15-301-1014	1	Cover, 10 Degree Reverse Curve
3	22-720-105	2	10.5" Chain Section
<b>0</b>	<b>22-707-515</b>		<b>15 Degree Reverse Curve Section</b>
1	22-15-830-1015	1	15 Degree Reverse Curve Weldment
2	22-15-301-1019	1	Cover, 15 Degree Reverse Curve
3	22-720-105	2.75	10.5" Chain Section
<b>0</b>	<b>22-707-520</b>		<b>20 Degree Reverse Curve Section</b>
1	22-15-830-1020	1	20 Degree Reverse Curve Weldment
2	22-15-301-1024	1	Cover, 20 Degree Reverse Curve
3	22-720-105	3.75	10.5" Chain Section
<b>0</b>	<b>22-707-525</b>		<b>25 Degree Reverse Curve Section</b>
1	22-15-830-1025	1	25 Degree Reverse Curve Weldment
2	22-15-301-1029	1	Cover, 25 Degree Reverse Curve
3	22-720-105	4.5	10.5" Chain Section
<b>0</b>	<b>22-707-530</b>		<b>30 Degree Reverse Curve Section</b>
1	22-15-830-1030	1	30 Degree Reverse Curve Weldment
2	22-15-301-1034	1	Cover, 30 Degree Reverse Curve
3	22-720-105	5.5	10.5" Chain Section
<b>0</b>	<b>22-707-535</b>		<b>35 Degree Reverse Curve Section</b>
1	22-15-830-1035	1	35 Degree Reverse Curve Weldment
2	22-15-301-1039	1	Cover, 35 Degree Reverse Curve
3	22-720-105	6.5	10.5" Chain Section
<b>0</b>	<b>22-707-540</b>		<b>40 Degree Reverse Curve Section</b>
1	22-15-830-1040	1	40 Degree Reverse Curve Weldment
2	22-15-301-1044	1	Cover, 40 Degree Reverse Curve
3	22-720-105	7.25	10.5" Chain Section
<b>0</b>	<b>22-707-545</b>		<b>45 Degree Reverse Curve Section</b>
1	22-15-830-1045	1	45 Degree Reverse Curve Weldment
2	22-15-301-1049	1	Cover, 45 Degree Reverse Curve
3	22-720-105	8.25	10.5" Chain Section



## Model 1212 - Cleanout Sections



<u>Item</u>	<u>Part No.</u>	<u>Quantity</u>	<u>Description</u>
<b>0</b>	<b>22-703-645</b>		<b>4' 6" Cleanout Section</b>
1	00-119	1	4' 6" Cover
2	09-1056	1	4' 6" Center Pan
3	22-13-830-1014	1	4' 6" Cleanout Section Weldment
4	22-13-830-1001	1	Cleanout Door Weldment
5	PC263	2	Pull-Action Toggle Clamp
<b>0</b>	<b>22-703-650</b>		<b>5' Cleanout Section</b>
1	00-118	1	5' Cover
2	09-1055	1	5' Center Pan
3	22-13-830-1005	1	5' Cleanout Section Weldment
4	22-13-830-1001	1	Cleanout Door Weldment
5	PC263	2	Pull-Action Toggle Clamp
<b>0</b>	<b>22-703-655</b>		<b>5' 5" Cleanout Section</b>
1	00-117	1	5' 6" Cover
2	09-1054	1	5' 6" Center Pan
3	22-13-830-1015	1	5' 6" Cleanout Section Weldment
4	22-13-830-1001	1	Cleanout Door Weldment
5	PC263	2	Pull-Action Toggle Clamp



## Cleanout Sections (Continued)

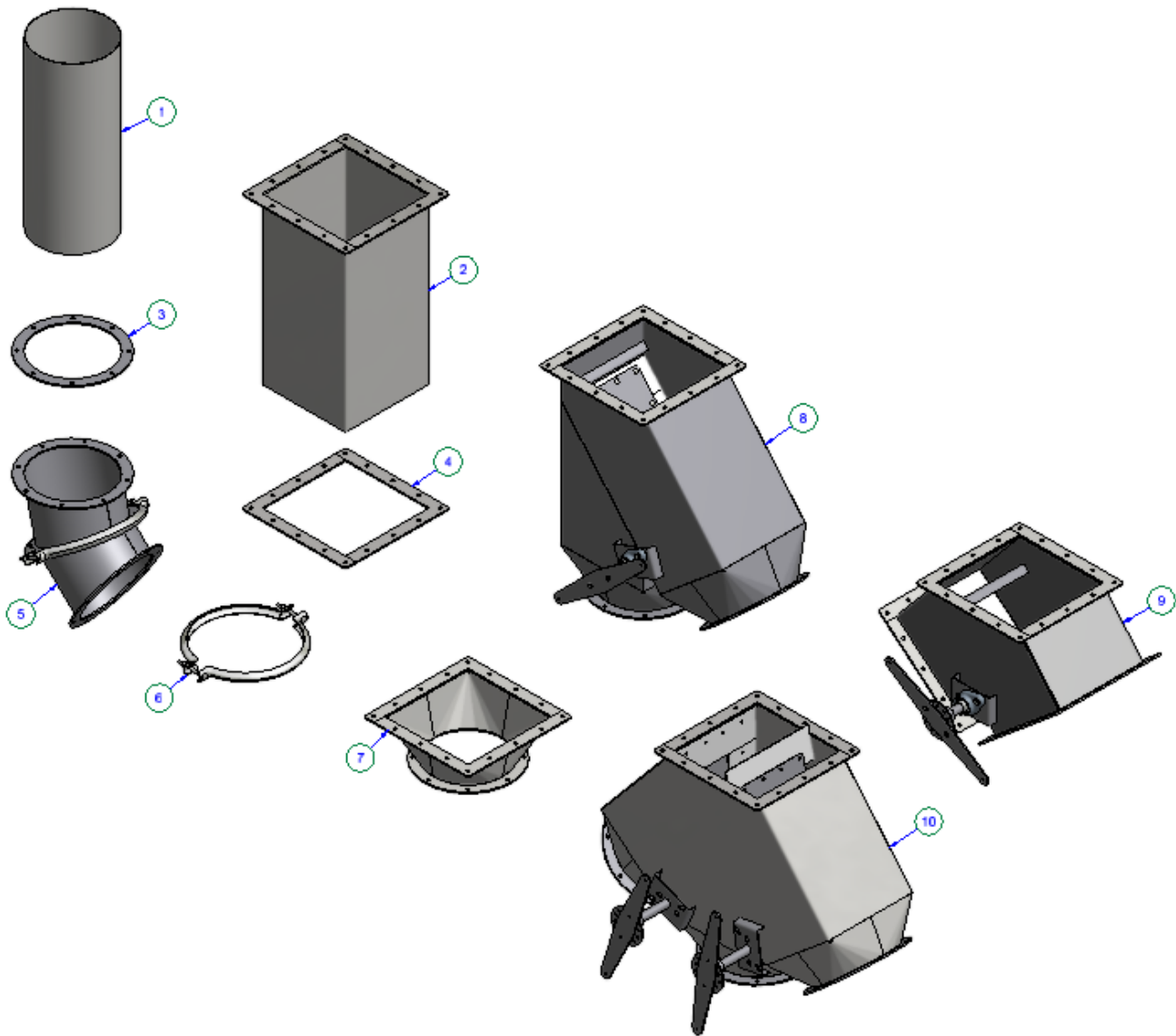
<u>Item</u>	<u>Part No.</u>	<u>Quantity</u>	<u>Description</u>
<b>0</b>	<b>22-703-660</b>		<b>6' Cleanout Section</b>
1	00-116	1	6' Cover
2	09-1053	1	6' Center Pan
3	22-13-830-1006	1	6' Cleanout Section Weldment
4	22-13-830-1001	1	Cleanout Door Weldment
5	PC263	2	Pull-Action Toggle Clamp
<b>0</b>	<b>22-703-665</b>		<b>6' 6" Cleanout Section</b>
1	00-115	1	6' 6" Cover
2	09-1052	1	6' 6" Center Pan
3	22-13-830-1016	1	6' 6" Cleanout Section Weldment
4	22-13-830-1001	1	Cleanout Door Weldment
5	PC263	2	Pull-Action Toggle Clamp
<b>0</b>	<b>22-703-670</b>		<b>7' Cleanout Section</b>
1	00-114	1	7' Cover
2	09-1051	1	7' Center Pan
3	22-13-830-1007	1	7' Cleanout Section Weldment
4	22-13-830-1001	1	Cleanout Door Weldment
5	PC263	2	Pull-Action Toggle Clamp
<b>0</b>	<b>22-703-675</b>		<b>7' 6" Cleanout Section</b>
1	00-113	1	7' 6" Cover
2	09-1050	1	7' 6" Center Pan
3	22-13-830-1017	1	7' 6" Cleanout Section Weldment
4	22-13-830-1001	1	Cleanout Door Weldment
5	PC263	2	Pull-Action Toggle Clamp
<b>0</b>	<b>22-703-680</b>		<b>8' Cleanout Section</b>
1	00-112	1	8' Cover
2	09-1049	1	8' Center Pan
3	22-13-830-1008	1	8' Cleanout Section Weldment
4	22-13-830-1001	1	Cleanout Door Weldment
5	PC263	2	Pull-Action Toggle Clamp
<b>0</b>	<b>22-703-685</b>		<b>8' 6" Cleanout Section</b>
1	00-111	1	8' 6" Cover
2	09-1048	1	8' 6" Center Pan
3	22-13-830-1018	1	8' 6" Cleanout Section Weldment
4	22-13-830-1001	1	Cleanout Door Weldment
5	PC263	2	Pull-Action Toggle Clamp
<b>0</b>	<b>22-703-690</b>		<b>9' Cleanout Section</b>
1	00-110	1	9' Cover
2	09-1047	1	9' Center Pan
3	22-13-830-1009	1	9' Cleanout Section Weldment
4	22-13-830-1001	1	Cleanout Door Weldment
5	PC263	2	Pull-Action Toggle Clamp
<b>0</b>	<b>22-703-695</b>		<b>9' 6" Cleanout Section</b>
1	00-109	1	9' 6" Cover
2	09-1046	1	9' 6" Center Pan
3	22-13-830-1019	1	9' 6" Cleanout Section Weldment
4	22-13-830-1001	1	Cleanout Door Weldment
5	PC263	2	Pull-Action Toggle Clamp
<b>0</b>	<b>22-703-600</b>		<b>10' Cleanout Section</b>
1	00-108	1	10' Cover
2	09-1045	1	10' Center Pan
3	22-13-830-1010	1	10' Cleanout Section Weldment
4	22-13-830-1001	1	Cleanout Door Weldment
5	PC263	2	Pull-Action Toggle Clamp

## **Model 1212 - Discharge Chute**



<b><u>Part No.</u></b>	<b><u>Description</u></b>
<b>22-712-000</b>	<b>0 Degree Transition Down Spout</b>
<b>22-712-010</b>	<b>10 Degree Transition Down Spout</b>
<b>22-712-015</b>	<b>15 Degree Transition Down Spout</b>
<b>22-712-020</b>	<b>20 Degree Transition Down Spout</b>
<b>22-712-025</b>	<b>25 Degree Transition Down Spout</b>
<b>22-712-030</b>	<b>30 Degree Transition Down Spout</b>
<b>22-712-035</b>	<b>35 Degree Transition Down Spout</b>
<b>22-712-040</b>	<b>40 Degree Transition Down Spout</b>
<b>22-712-045</b>	<b>45 Degree Transition Down Spout</b>
<b>22-712-050</b>	<b>50 Degree Transition Down Spout</b>
<b>22-712-055</b>	<b>55 Degree Transition Down Spout</b>
<b>22-712-060</b>	<b>60 Degree Transition Down Spout</b>
<b>22-712-065</b>	<b>65 Degree Transition Down Spout</b>
<b>22-712-070</b>	<b>70 Degree Transition Down Spout</b>

## Model 1212 - Spouting Options



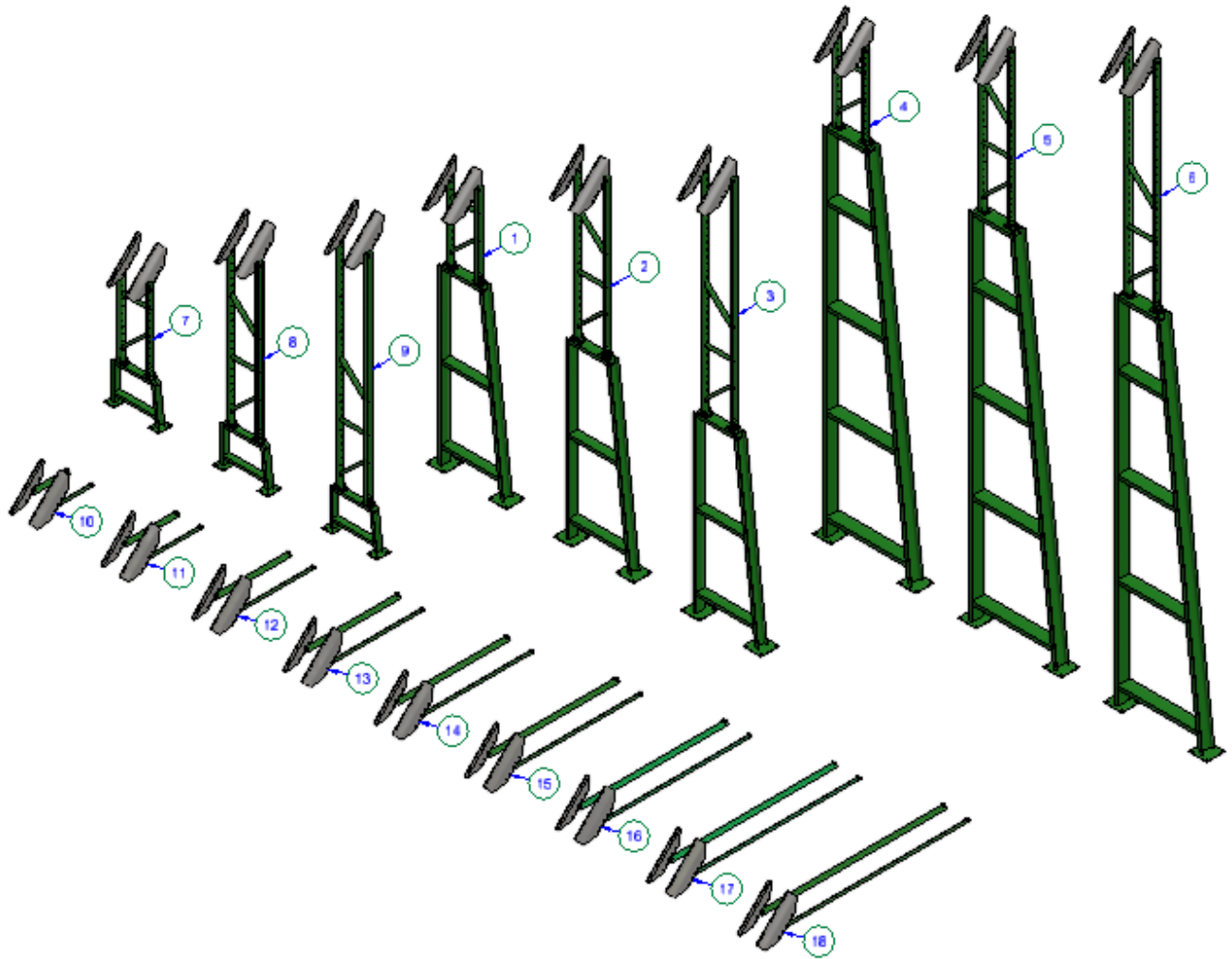
<u>Item</u>	<u>Part No.</u>	<u>Description</u>
1	351-010-005	10" Round Spouting, 6"
1	351-010-010	10" Round Spouting, 1'
1	351-010-015	10" Round Spouting, 1' 6"
1	351-010-020	10" Round Spouting, 2'
1	351-010-025	10" Round Spouting, 2' 6"
1	351-010-030	10" Round Spouting, 3'
1	351-010-035	10" Round Spouting, 3' 6"
1	351-010-040	10" Round Spouting, 4'
1	351-010-045	10" Round Spouting, 4' 6"
1	351-010-050	10" Round Spouting, 5'
1	351-010-055	10" Round Spouting, 5' 6"
1	351-010-060	10" Round Spouting, 6'
1	351-010-065	10" Round Spouting, 6' 6"
1	351-010-070	10" Round Spouting, 7'
1	351-010-075	10" Round Spouting, 7' 6"
1	351-010-080	10" Round Spouting, 8'
1	351-010-085	10" Round Spouting, 8' 6"
1	351-010-090	10" Round Spouting, 9'
1	351-010-095	10" Round Spouting, 9' 6"
1	351-010-100	10" Round Spouting, 10'

<u>Item</u>	<u>Part No.</u>	<u>Description</u>
1	351-010-105	10" Round Spouting, 10' 6"
1	351-010-110	10" Round Spouting, 11'
1	351-010-115	10" Round Spouting, 11' 6"
1	351-010-120	10" Round Spouting, 12'
1	351-010-125	10" Round Spouting, 12' 6"
1	351-010-130	10" Round Spouting, 13'
1	351-010-135	10" Round Spouting, 13' 6"
1	351-010-140	10" Round Spouting, 14'
1	351-010-145	10" Round Spouting, 14' 6"
1	351-010-150	10" Round Spouting, 15'
1	351-010-155	10" Round Spouting, 15' 6"
1	351-010-160	10" Round Spouting, 16'
1	351-010-165	10" Round Spouting, 16' 6"
1	351-010-170	10" Round Spouting, 17'
1	351-010-175	10" Round Spouting, 17' 6"
1	351-010-180	10" Round Spouting, 18'
1	351-010-185	10" Round Spouting, 18' 6"
1	351-010-190	10" Round Spouting, 19'
1	351-010-195	10" Round Spouting, 19' 6"
1	351-010-200	10" Round Spouting, 20'

## Spouting Options (Continued)

<u>Item</u>	<u>Part No.</u>	<u>Description</u>	<u>Item</u>	<u>Part No.</u>	<u>Description</u>
2	351-112-010	12" Square Spouting, 1'	3	351-010-001	10"ID Flange Ring
2	351-112-015	12" Square Spouting, 1' 6"	4	351-012-003	12" Square Flange
2	351-112-020	12" Square Spouting, 2'	5	351-310-010	60 Deg Adj Elbow Assy
2	351-112-025	12" Square Spouting, 2' 6"	6	TW2	10" Flange Ring Clamp
2	351-112-030	12" Square Spouting, 3'	7	351-312-110	12" Square To 10" Round
2	351-112-035	12" Square Spouting, 3' 6"	8	351-212-210	12" "K" Valve Assy
2	351-112-040	12" Square Spouting, 4'	9	351-212-012	2-Way "Y" Valve Assy
2	351-112-045	12" Square Spouting, 4' 6"	10	11-995	3-Way Valve Assy
2	351-112-050	12" Square Spouting, 5'			
2	351-112-055	12" Square Spouting, 5' 6"			
2	351-112-060	12" Square Spouting, 6'			
2	351-112-065	12" Square Spouting, 6' 6"			
2	351-112-070	12" Square Spouting, 7'			
2	351-112-075	12" Square Spouting, 7' 6"			
2	351-112-080	12" Square Spouting, 8'			
2	351-112-085	12" Square Spouting, 8' 6"			
2	351-112-090	12" Square Spouting, 9'			
2	351-112-095	12" Square Spouting, 9' 6"			

## Model 1212 - Support Stands



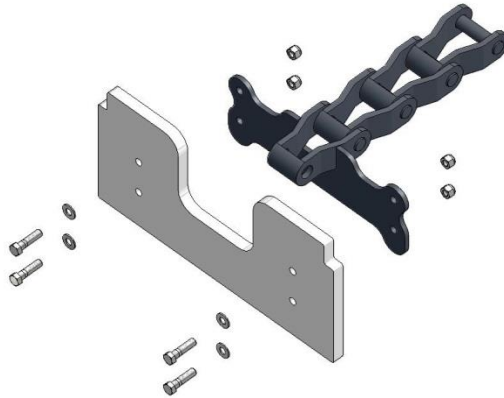
<b>Item</b>	<b>Part No.</b>	<b>Description</b>
1	22-14-910-1001	10' To 14' Adjustable Stand Assembly, 1212
2	22-14-910-1002	10' To 18' Adjustable Stand Assembly, 1212
3	22-14-910-1003	10' To 21'-6" Adjustable Stand Assembly, 1212
4	22-14-910-1007	20' To 24' Adjustable Stand Assembly, 1212
5	22-14-910-1008	20' To 28' Adjustable Stand Assembly, 1212
6	22-14-910-1009	20' To 31'-6" Adjustable Stand Assembly, 1212
7	22-14-910-1013	2'-6" To 6'-6" Adjustable Stand Assembly, 1212
8	22-14-910-1014	2'-6" To 10'-6" Adjustable Stand Assembly, 1212
9	22-14-910-1015	2'-6" To 14' Adjustable Stand Assembly, 1212
10	22-603-02	2' Brace Arm Assembly
11	22-603-03	3' Brace Arm Assembly
12	22-603-04	4' Brace Arm Assembly
13	22-603-05	5' Brace Arm Assembly
14	22-603-06	6' Brace Arm Assembly
15	22-603-07	7' Brace Arm Assembly
16	22-603-08	8' Brace Arm Assembly
17	22-603-09	9' Brace Arm Assembly
18	22-603-10	10' Brace Arm Assembly

## Model 1616 - Drive Over Grate



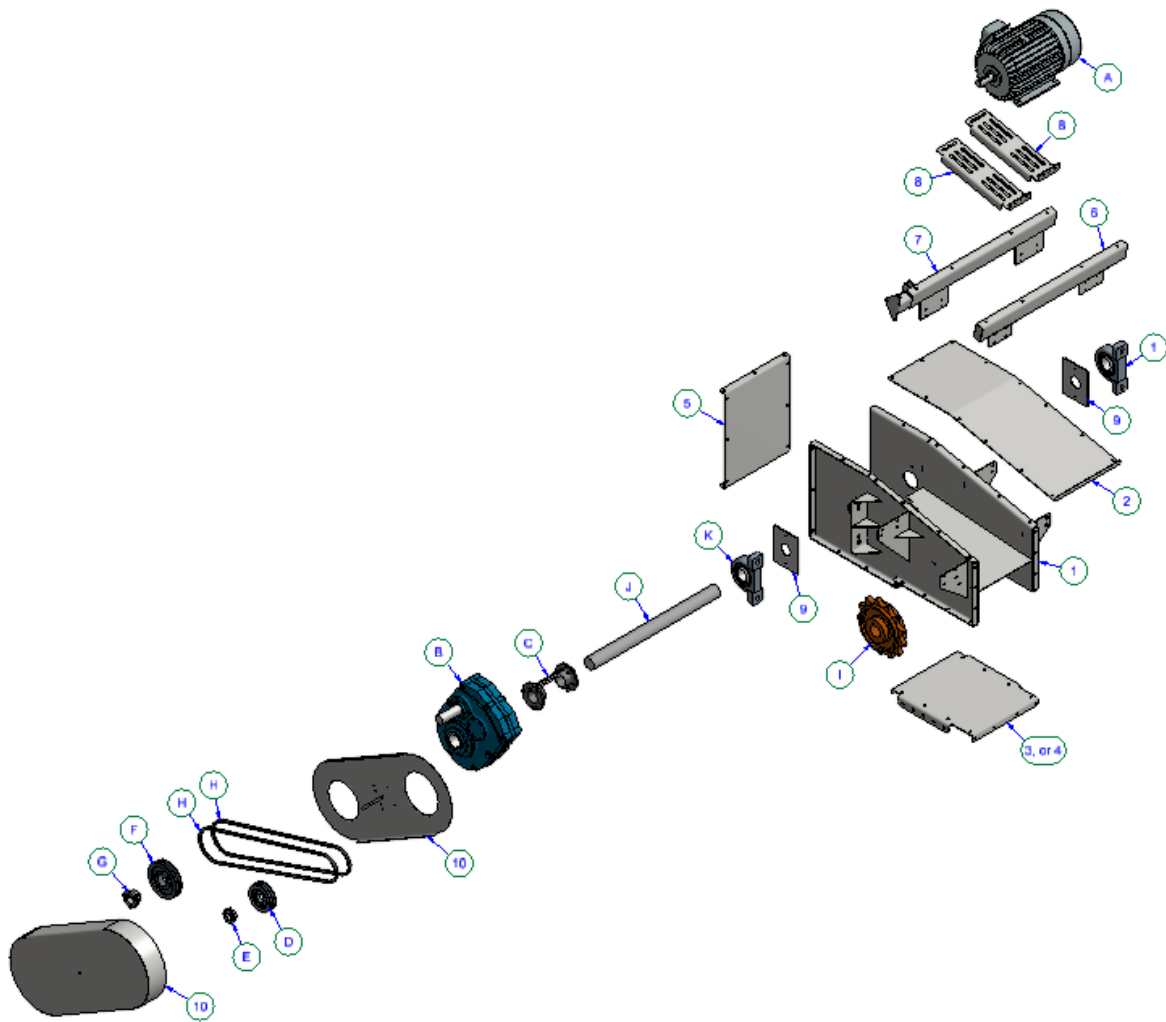
<u>Part No.</u>	<u>Description</u>
32-706-012	12" Drive Over Grate
32-706-024	24" Drive Over Grate

## Model 1616 - Chain Section



<u>Item</u>	<u>Part No.</u>	<u>Quantity</u>	<u>Description</u>
<b>0</b>	<b>32-720-105</b>		<b>12" Chain Section</b>
1	32-720-205	1	Chain Section, 3 Links, 1 Link Attachment
2	32-088	1	UHMW Paddle
3	HD239	4	3/8" x 1-1/2" Hex Bolt, SS
4	HD43	4	3/8" Flat Washer, SS
5	HD198	4	3/8" Nylock Nut, SS

## Model 1616 - Drive Section



### Model 1616 - Drive Section Parts List

32-752-151	1616, 15HP, RH, 200TPH	32-750-151	1616 w/Bracket, 15HP, RH, 200TPH
32-752-152	1616, 15HP, LH, 200TPH	32-750-152	1616 w/Bracket, 15HP, LH, 200TPH
32-751-151	1616, 15HP, RH, 180TPH	32-749-151	1616 w/Bracket, 15HP, RH, 180TPH
32-751-152	1616, 15HP, LH, 180TPH	32-749-152	1616 w/Bracket, 15HP, LH, 180TPH
32-752-201	1616, 20HP, RH, 200TPH	32-750-201	1616 w/Bracket, 20HP, RH, 200TPH
32-752-202	1616, 20HP, LH, 200TPH	32-750-202	1616 w/Bracket, 20HP, LH, 200TPH
32-751-201	1616, 20HP, RH, 180TPH	32-749-201	1616 w/Bracket, 20HP, RH, 180TPH
32-751-202	1616, 20HP, LH, 180TPH	32-749-202	1616 w/Bracket, 20HP, LH, 180TPH
32-752-251	1616, 25HP, RH, 200TPH	32-750-251	1616 w/Bracket, 25HP, RH, 200TPH
32-752-252	1616, 25HP, LH, 200TPH	32-750-252	1616 w/Bracket, 25HP, LH, 200TPH
32-751-251	1616, 25HP, RH, 180TPH	32-749-251	1616 w/Bracket, 25HP, RH, 180TPH
32-751-252	1616, 25HP, LH, 180TPH	32-749-252	1616 w/Bracket, 25HP, LH, 180TPH
32-752-301	1616, 30HP, RH, 200TPH	32-750-301	1616 w/Bracket, 30HP, RH, 200TPH
32-752-302	1616, 30HP, LH, 200TPH	32-750-302	1616 w/Bracket, 30HP, LH, 200TPH
32-751-301	1616, 30HP, RH, 180TPH	32-749-301	1616 w/Bracket, 30HP, RH, 180TPH
32-751-302	1616, 30HP, LH, 180TPH	32-749-302	1616 w/Bracket, 30HP, LH, 180TPH
32-752-401	1616, 40HP, RH, 200TPH	32-750-401	1616 w/Bracket, 40HP, RH, 200TPH
32-752-402	1616, 40HP, LH, 200TPH	32-750-402	1616 w/Bracket, 40HP, LH, 200TPH
32-751-401	1616, 40HP, RH, 180TPH	32-749-401	1616 w/Bracket, 40HP, RH, 180TPH
32-751-402	1616, 40HP, LH, 180TPH	32-749-402	1616 w/Bracket, 40HP, LH, 180TPH
32-752-501	1616, 50HP, RH, 200TPH	32-750-501	1616 w/Bracket, 50HP, RH, 200TPH
32-752-502	1616, 50HP, LH, 200TPH	32-750-502	1616 w/Bracket, 50HP, LH, 200TPH
32-751-501	1616, 50HP, RH, 180TPH	32-749-501	1616 w/Bracket, 50HP, RH, 180TPH
32-751-502	1616, 50HP, LH, 180TPH	32-749-502	1616 w/Bracket, 50HP, LH, 180TPH

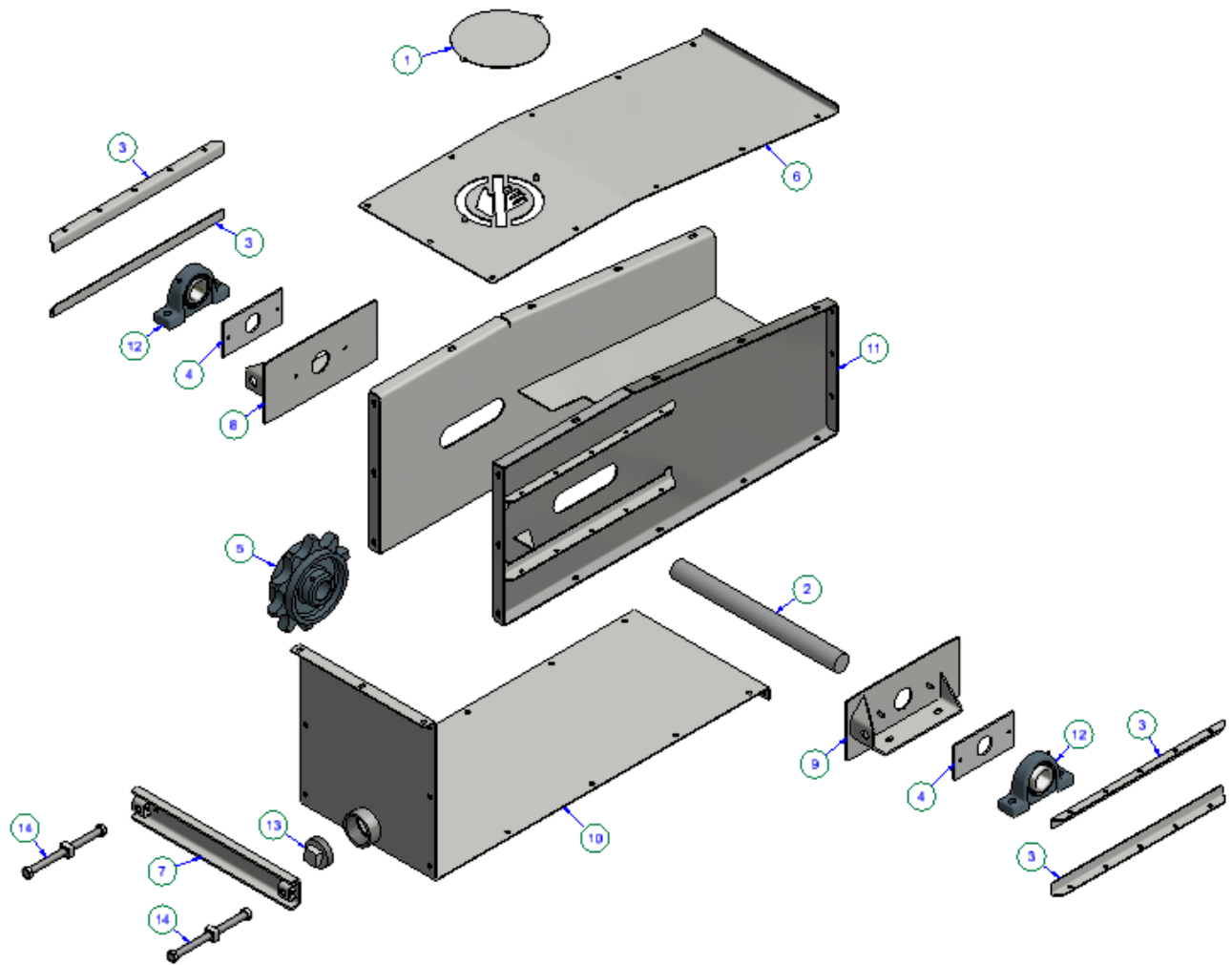
## Drive Section Parts List (Continued)

<u>Item</u>	<u>Part No.</u>	<u>Quantity</u>	<u>Description</u>
1	32-902	1	Head Section Weldment
2	32-069	1	Top Cover
3	32-070	1	Bottom Cover
4	32-225	1	Bottom Cover Bracket
5	32-068	1	Front Cover
6	32-904	1	Motor Mount Tube Weldment, Rear
7	32-957	1	Motor Mount Tube Weldment, Front
8	32-158	2	Motor Plate
9	32-1000	2	Shaft Seal
10	32-956	1	Belt Guard Assembly

<u>A</u>	<u>B</u>	<u>C</u>	<u>D</u>	<u>E</u>	<u>F</u>	<u>G</u>	<u>H</u>	<u>I</u>	<u>J</u>	<u>K</u>
<u>Motor</u>	<u>Gearbox</u>	<u>Tapered Bushing</u>	<u>Sheave, Motor</u>	<u>Bushing, Motor</u>	<u>Sheave, Gearbox</u>	<u>Bushing, Gearbox</u>	<u>V- Belt</u>	<u>Sprocket</u>	<u>Shaft</u>	<u>Bearing</u>
<b>15HP</b>	PT5215-25	0279-00064	SDS 2B6.0	SDS 1 <sup>5</sup> / <sub>8</sub> "	SK 2B8.0	SKX 1 <sup>15</sup> / <sub>16</sub> "		2 <sup>15</sup> / <sub>16</sub> "	2 <sup>15</sup> / <sub>16</sub> "x37 <sup>1</sup> / <sub>8</sub> "	2 <sup>15</sup> / <sub>16</sub> " PB
MT3	PC222	PC223	SV37	BS37	SV41	BS60		32-163	32-244	BR36
<b>20HP</b>	PT6307-25	0279-00078	SDS 2B6.0	SDS 1 <sup>5</sup> / <sub>8</sub> "	SK 2B8.0	SKX 2 <sup>3</sup> / <sub>16</sub> "		2 <sup>15</sup> / <sub>16</sub> "	2 <sup>15</sup> / <sub>16</sub> "x37 <sup>1</sup> / <sub>8</sub> "	2 <sup>15</sup> / <sub>16</sub> " PB
MT5	PC224	PC226	SV37	BS37	SV41	BS44		32-163	32-244	BR36
<b>25HP</b>	PT6307-25	0279-00078	SDS 2B6.0	SDS 1 <sup>7</sup> / <sub>8</sub> "	SK 2B8.0	SKX 2 <sup>3</sup> / <sub>16</sub> "		2 <sup>15</sup> / <sub>16</sub> "	2 <sup>15</sup> / <sub>16</sub> "x37 <sup>1</sup> / <sub>8</sub> "	2 <sup>15</sup> / <sub>16</sub> " PB
MT19	PC224	PC226	SV37	BS45	SV41	BS44		32-163	32-244	BR36
<b>30HP</b>	PT7315-25	0279-00092	2517 3B7	2517 1 <sup>7</sup> / <sub>8</sub> "	2517 3B8.6	2517 2 <sup>7</sup> / <sub>16</sub> "		3 <sup>7</sup> / <sub>16</sub> "	3 <sup>7</sup> / <sub>16</sub> "x38"	3 <sup>7</sup> / <sub>16</sub> " PB
MT6	PC228	PC229	SV51	BS30	SV32	BS33		32-247	32-157	BR7
<b>40HP</b>	PT8407-25	0279-00109	2517 3B7	2517 2 <sup>1</sup> / <sub>8</sub> "	2517 3B8.6	2517 2 <sup>7</sup> / <sub>16</sub> "		3 <sup>7</sup> / <sub>16</sub> "	3 <sup>7</sup> / <sub>16</sub> "x38"	3 <sup>7</sup> / <sub>16</sub> " PB
MT10	PC242	PC243	SV51	BS31	SV32	BS33	1880	32-247	32-157	BR7
<b>50HP</b>	PT8407-25	0279-00109	2517 3B7	2517 2 <sup>1</sup> / <sub>8</sub> "	2517 3B8.6	2517 2 <sup>7</sup> / <sub>16</sub> "		3 <sup>7</sup> / <sub>16</sub> "	3 <sup>7</sup> / <sub>16</sub> "x38"	3 <sup>7</sup> / <sub>16</sub> " PB
MT11	PC242	PC243	SV51	BS31	SV32	BS33	1970	32-247	32-157	BR7

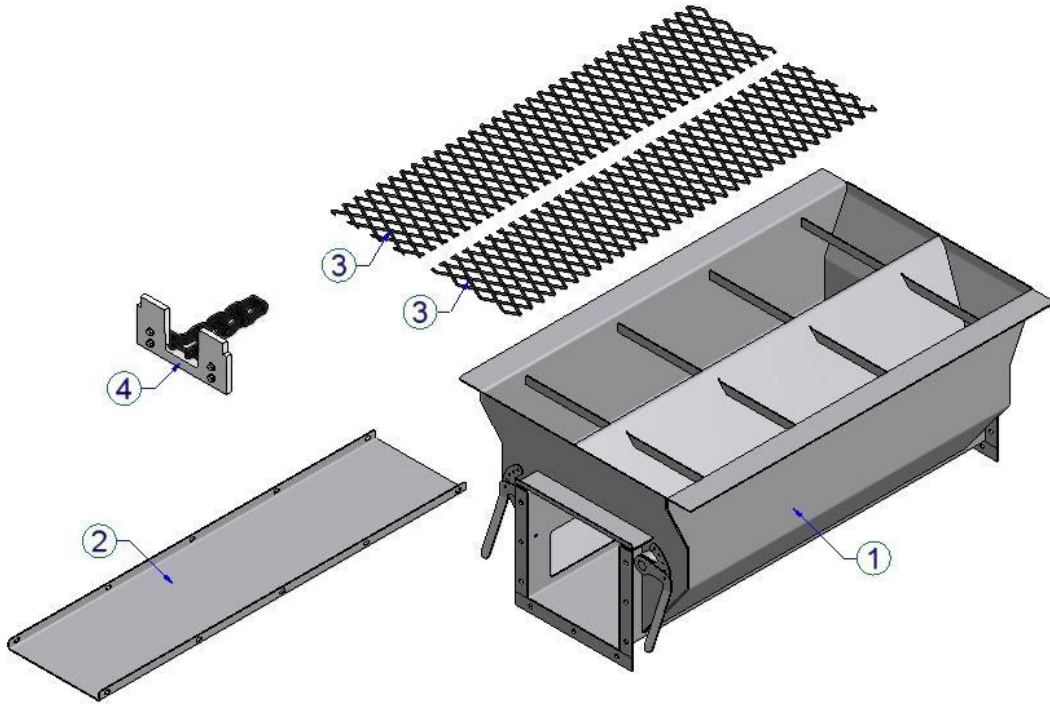


## Model 1616 - Tail Section



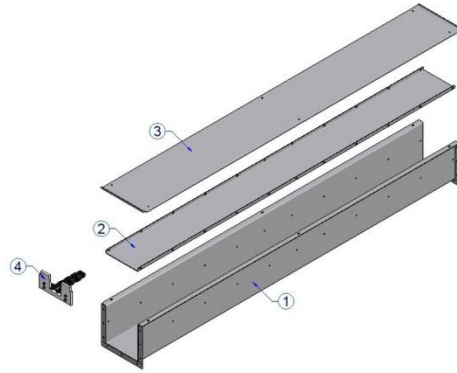
<u>Item</u>	<u>Part No.</u>	<u>Quantity</u>	<u>Description</u>
<b>0</b>	<b>32-702-500</b>		<b>Tail Section w/Chain &amp; Hardware</b>
1	22-055	1	Inspection Cover
2	32-091	1	Tail Shaft
3	32-094	4	Bearing Retaining Angle
4	32-095	2	Shaft Seal
5	32-168	1	Sprocket
6	32-816	1	Top Cover
7	32-817	1	Take-Up Bracket Weldment
8	32-907	1	Left Bearing Bracket Weldment
9	32-908	1	Right Bearing Bracket Weldment
10	32-912	1	Bottom/Back Weldment
11	32-913	1	Tail Section Weldment
12	BR41	2	Bearing
13	LT6	1	Drain Plug
14	SN1	2	Take-Up Bolt Assembly

## Model 1616 - Hoppers



<u>Item</u>	<u>Part No.</u>	<u>Quantity</u>	<u>Description</u>
<b>0</b>	<b>32-705-020</b>		<b>2' Hopper Section, w/Chain &amp; Hardware</b>
1	32-705-021	1	2' Hopper Weldment
2	32-1099	1	2' Pan
3	32-192	2	2' Screen Section
4	32-720-105	2.3	12" Chain Section
<b>0</b>	<b>32-705-030</b>		<b>3' Hopper Section, w/Chain &amp; Hardware</b>
1	32-705-031	1	3' Hopper Weldment
2	32-1097	1	3' Pan
3	32-193	2	3' Screen Section
4	32-720-105	7	12" Chain Section
<b>0</b>	<b>32-705-040</b>		<b>4' Hopper Section, w/Chain &amp; Hardware</b>
1	32-705-041	1	4' Hopper Weldment
2	32-1095	1	4' Pan
3	32-194	2	4' Screen Section
4	32-720-105	13.75	12" Chain Section

## Model 1616 - Straight Sections

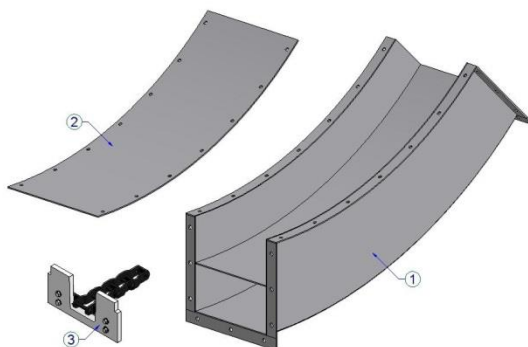


<u>Item</u>	<u>Part No.</u>	<u>Quantity</u>	<u>Description</u>
<b>0</b>	<b>32-703-510</b>		<b>1' Straight Section, w/Chain &amp; Hardware</b>
1	32-703-410	1	1' Straight Section Weldment
2	32-1101	1	1' Center Pan
3	32-416	1	1' Cover
4	32-720-105	2.5	12" Chain Section
<b>0</b>	<b>32-703-515</b>		<b>1' 6" Straight Section, w/Chain &amp; Hardware</b>
1	32-703-415	1	1' 6" Straight Section Weldment
2	32-1100	1	1' 6" Center Pan
3	32-415	1	1' 6" Cover
4	32-720-105	3.5	12" Chain Section
<b>0</b>	<b>32-703-520</b>		<b>2' Straight Section, w/Chain &amp; Hardware</b>
1	32-703-420	1	2' Straight Section Weldment
2	32-1099	1	2' Center Pan
3	32-414	1	2' Cover
4	32-720-105	4.5	12" Chain Section
<b>0</b>	<b>32-703-525</b>		<b>2' 6" Straight Section, w/Chain &amp; Hardware</b>
1	32-703-425	1	2' 6" Straight Section Weldment
2	32-1098	1	2' 6" Center Pan
3	32-414	1	2' 6" Cover
4	32-720-105	5.75	12" Chain Section
<b>0</b>	<b>32-703-530</b>		<b>3' Straight Section, w/Chain &amp; Hardware</b>
1	32-703-430	1	3' Straight Section Weldment
2	32-1097	1	3' Center Pan
3	32-413	1	3' Cover
4	32-720-105	7	12" Chain Section
<b>0</b>	<b>32-703-535</b>		<b>3' 6" Straight Section, w/Chain &amp; Hardware</b>
1	32-703-435	1	3' 6" Straight Section Weldment
2	32-1096	1	3' 6" Center Pan
3	32-412	1	3' 6" Cover
4	32-720-105	8	12" Chain Section
<b>0</b>	<b>32-703-540</b>		<b>4' Straight Section, w/Chain &amp; Hardware</b>
1	32-703-440	1	4' Straight Section Weldment
2	32-1095	1	4' Center Pan
3	32-411	1	4' Cover
4	32-720-105	9.25	12" Chain Section
<b>0</b>	<b>32-703-545</b>		<b>4' 6" Straight Section, w/Chain &amp; Hardware</b>
1	32-703-445	1	4' 6" Straight Section Weldment
2	32-1094	1	4' 6" Center Pan
3	32-410	1	4' 6" Cover
4	32-720-105	10.5	12" Chain Section

## Straight Sections (Continued)

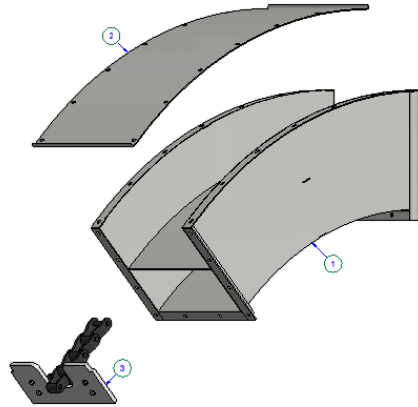
<u>Item</u>	<u>Part No.</u>	<u>Quantity</u>	<u>Description</u>
<b>0</b>	<b>32-703-550</b>		<b>5' Straight Section, w/Chain &amp; Hardware</b>
1	32-703-450	1	5' Straight Section Weldment
2	32-1093	1	5' Center Pan
3	32-409	1	5' Cover
4	32-720-105	11.5	12" Chain Section
<b>0</b>	<b>32-703-555</b>		<b>5' 6" Straight Section, w/Chain &amp; Hardware</b>
1	32-703-455	1	5' 6" Straight Section Weldment
2	32-1092	1	5' 6" Center Pan
3	32-408	1	5' 6" Cover
4	32-720-105	12.75	12" Chain Section
<b>0</b>	<b>32-703-560</b>		<b>6' Straight Section, w/Chain &amp; Hardware</b>
1	32-703-460	1	6' Straight Section Weldment
2	32-1091	1	6' Center Pan
3	32-407	1	6' Cover
4	32-720-105	13.75	12" Chain Section
<b>0</b>	<b>32-703-565</b>		<b>6' 6" Straight Section, w/Chain &amp; Hardware</b>
1	32-703-465	1	6' 6" Straight Section Weldment
2	32-1090	1	6' 6" Center Pan
3	32-406	1	6' 6" Cover
4	32-720-105	15	12" Chain Section
<b>0</b>	<b>32-703-570</b>		<b>7' Straight Section, w/Chain &amp; Hardware</b>
1	32-703-470	1	7' Straight Section Weldment
2	32-1089	1	7' Center Pan
3	32-405	1	7' Cover
4	32-720-105	16	12" Chain Section
<b>0</b>	<b>32-703-575</b>		<b>7' 6" Straight Section, w/Chain &amp; Hardware</b>
1	32-703-475	1	7' 6" Straight Section Weldment
2	32-1088	1	7' 6" Center Pan
3	32-404	1	7' 6" Cover
4	32-720-105	17.25	12" Chain Section
<b>0</b>	<b>32-703-580</b>		<b>8' Straight Section, w/Chain &amp; Hardware</b>
1	32-703-480	1	8' Straight Section Weldment
2	32-1087	1	8' Center Pan
3	32-403	1	8' Cover
4	32-720-105	18.5	12" Chain Section
<b>0</b>	<b>32-703-585</b>		<b>8' 6" Straight Section, w/Chain &amp; Hardware</b>
1	32-703-485	1	8' 6" Straight Section Weldment
2	32-1086	1	8' 6" Center Pan
3	32-402	1	8' 6" Cover
4	32-720-105	19.5	12" Chain Section
<b>0</b>	<b>32-703-590</b>		<b>9' Straight Section, w/Chain &amp; Hardware</b>
1	32-703-490	1	9' Straight Section Weldment
2	32-1085	1	9' Center Pan
3	32-401	1	9' Cover
4	32-720-105	20.5	12" Chain Section
<b>0</b>	<b>32-703-595</b>		<b>9' 6" Straight Section, w/Chain &amp; Hardware</b>
1	32-703-495	1	9' 6" Straight Section Weldment
2	32-1084	1	9' 6" Center Pan
3	32-822	1	9' 6" Cover
4	32-720-105	21.75	12" Chain Section
<b>0</b>	<b>32-703-500</b>		<b>10' Straight Section, w/Chain &amp; Hardware</b>
1	32-403-400	1	10' Straight Section Weldment
2	32-1083	1	10' Center Pan
3	32-057	1	10' Cover
4	32-720-105	22.75	12" Chain Section

## Model 1616 - Curve Sections



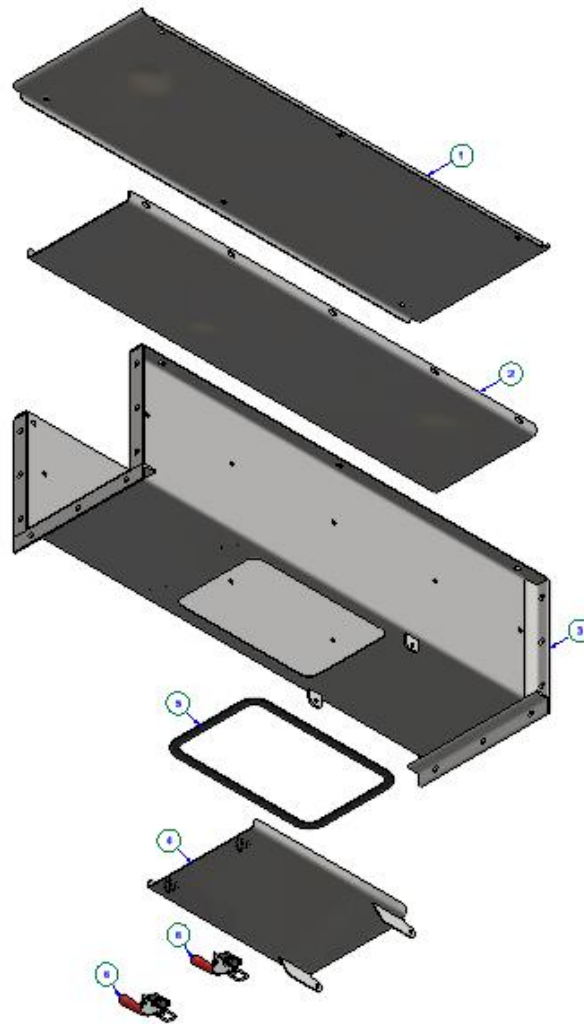
<u>Item</u>	<u>Part No.</u>	<u>Quantity</u>	<u>Description</u>
<b>0</b>	<b>32-704-510</b>		<b>10 Degree Curve Section, w/Chain &amp; Hardware</b>
1	32-704-110	1	10 Degree Curve Weldment
2	32-470	1	Cover, 10 Degree Curve
3	32-720-105	2	12" Chain Section
<b>0</b>	<b>32-704-515</b>		<b>15 Degree Curve Section, w/Chain &amp; Hardware</b>
1	32-704-115	1	15 Degree Curve Weldment
2	32-471	1	Cover, 15 Degree Curve
3	32-720-105	2.75	12" Chain Section
<b>0</b>	<b>32-704-520</b>		<b>20 Degree Curve Section, w/Chain &amp; Hardware</b>
1	32-704-120	1	20 Degree Curve Weldment
2	32-472	1	Cover, 20 Degree Curve
3	32-720-105	3.75	12" Chain Section
<b>0</b>	<b>32-704-525</b>		<b>25 Degree Curve Section, w/Chain &amp; Hardware</b>
1	32-704-125	1	25 Degree Curve Weldment
2	32-473	1	Cover, 25 Degree Curve
3	32-720-105	4.5	12" Chain Section
<b>0</b>	<b>32-704-530</b>		<b>30 Degree Curve Section, w/Chain &amp; Hardware</b>
1	32-704-130	1	30 Degree Curve Weldment
2	32-474	1	Cover, 30 Degree Curve
3	32-720-105	5.5	12" Chain Section
<b>0</b>	<b>32-704-535</b>		<b>35 Degree Curve Section, w/Chain &amp; Hardware</b>
1	32-704-135	1	35 Degree Curve Weldment
2	32-475	1	Cover, 35 Degree Curve
3	32-720-105	6.5	12" Chain Section
<b>0</b>	<b>32-704-540</b>		<b>40 Degree Curve Section, w/Chain &amp; Hardware</b>
1	32-704-140	1	40 Degree Curve Weldment
2	32-476	1	Cover, 40 Degree Curve
3	32-720-105	7.25	12" Chain Section
<b>0</b>	<b>32-704-545</b>		<b>45 Degree Curve Section, w/Chain &amp; Hardware</b>
1	32-704-145	1	45 Degree Curve Weldment
2	32-140	1	Cover, 45 Degree Curve
3	32-720-105	8.25	12" Chain Section
<b>0</b>	<b>32-704-550</b>		<b>50 Degree Curve Section, w/Chain &amp; Hardware</b>
1	32-704-150	1	50 Degree Curve Weldment
2	32-477	1	Cover, 50 Degree Curve
3	32-720-105	9	12" Chain Section
<b>0</b>	<b>32-704-555</b>		<b>55 Degree Curve Section, w/Chain &amp; Hardware</b>
1	32-704-155	1	55 Degree Curve Weldment
2	32-478	1	Cover, 55 Degree Curve
3	32-720-105	10	12" Chain Section
<b>0</b>	<b>32-704-560</b>		<b>60 Degree Curve Section, w/Chain &amp; Hardware</b>
1	32-704-160	1	60 Degree Curve Weldment
2	32-479	1	Cover, 60 Degree Curve
3	32-720-105	11	12" Chain Section

## Model 1616 - Reverse Curve Sections



<u>Item</u>	<u>Part No.</u>	<u>Quantity</u>	<u>Description</u>
<b>0</b>	<b>32-707-510</b>		<b>10 Degree Reverse Curve Section</b>
1	32-15-830-1110	1	10 Degree Curve Weldment
2	32-15-301-1014	1	Cover, 10 Degree Curve
3	32-720-105	2	12" Chain Section
<b>0</b>	<b>32-707-515</b>		<b>15 Degree Reverse Curve Section</b>
1	32-15-830-1115	1	15 Degree Curve Weldment
2	32-15-301-1019	1	Cover, 15 Degree Curve
3	32-720-105	2.75	12" Chain Section
<b>0</b>	<b>32-707-520</b>		<b>20 Degree Reverse Curve Section</b>
1	32-15-830-1120	1	20 Degree Curve Weldment
2	32-15-301-1024	1	Cover, 20 Degree Curve
3	32-720-105	3.75	12" Chain Section
<b>0</b>	<b>32-707-525</b>		<b>25 Degree Reverse Curve Section</b>
1	32-15-830-1125	1	25 Degree Curve Weldment
2	32-15-301-1029	1	Cover, 25 Degree Curve
3	32-720-105	4.5	12" Chain Section
<b>0</b>	<b>32-707-530</b>		<b>30 Degree Reverse Curve Section</b>
1	32-15-830-1130	1	30 Degree Curve Weldment
2	32-15-301-1034	1	Cover, 30 Degree Curve
3	32-720-105	5.5	12" Chain Section
<b>0</b>	<b>32-707-535</b>		<b>35 Degree Reverse Curve Section</b>
1	32-15-830-1135	1	35 Degree Curve Weldment
2	32-15-301-1039	1	Cover, 35 Degree Curve
3	32-720-105	6.5	12" Chain Section
<b>0</b>	<b>32-707-540</b>		<b>40 Degree Reverse Curve Section</b>
1	32-15-830-1140	1	40 Degree Curve Weldment
2	32-15-301-1044	1	Cover, 40 Degree Curve
3	32-720-105	7.25	12" Chain Section
<b>0</b>	<b>32-707-545</b>		<b>45 Degree Reverse Curve Section</b>
1	32-15-830-1145	1	45 Degree Curve Weldment
2	32-15-301-1049	1	Cover, 45 Degree Curve
3	32-720-105	8.25	12" Chain Section
<b>0</b>	<b>32-707-550</b>		<b>50 Degree Reverse Curve Section</b>
1	32-15-830-1150	1	50 Degree Curve Weldment
2	32-15-301-1054	1	Cover, 50 Degree Curve
3	32-720-105	9	12" Chain Section
<b>0</b>	<b>32-707-555</b>		<b>55 Degree Reverse Curve Section</b>
1	32-15-830-1155	1	55 Degree Curve Weldment
2	32-15-301-1059	1	Cover, 55 Degree Curve
3	32-720-105	10	12" Chain Section
<b>0</b>	<b>32-707-560</b>		<b>60 Degree Reverse Curve Section</b>
1	32-15-830-1160	1	60 Degree Curve Weldment
2	32-15-301-1064	1	Cover, 60 Degree Curve
3	32-720-105	11	12" Chain Section

## Model 1616 - Cleanout Sections



<u>Item</u>	<u>Part No.</u>	<u>Quantity</u>	<u>Description</u>
<b>0</b>	<b>32-703-640</b>		<b>4' Cleanout Section</b>
1	32-411	1	4' Cover
2	32-1095	1	4' Center Pan
3	32-13-830-1004	1	4' Cleanout Section Weldment
4	32-13-830-1001	1	Cleanout Door Weldment
5	PC263	2	Pull-Action Toggle Clamp
<b>0</b>	<b>32-703-645</b>		<b>4' 6" Cleanout Section</b>
1	32-410	1	4' 6" Cover
2	32-1094	1	4' 6" Center Pan
3	32-13-830-1014	1	4' 6" Cleanout Section Weldment
4	32-13-830-1001	1	Cleanout Door Weldment
5	PC263	2	Pull-Action Toggle Clamp
<b>0</b>	<b>32-703-650</b>		<b>5' Cleanout Section</b>
1	32-409	1	5' Cover
2	32-1093	1	5' Center Pan
3	32-13-830-1005	1	5' Cleanout Section Weldment
4	32-13-830-1001	1	Cleanout Door Weldment
5	PC263	2	Pull-Action Toggle Clamp
<b>0</b>	<b>32-703-655</b>		<b>5' 5" Cleanout Section</b>
1	32-408	1	5' 5" Cover
2	32-1092	1	5' 5" Center Pan
3	32-13-830-1015	1	5' 5" Cleanout Section Weldment
4	32-13-830-1001	1	Cleanout Door Weldment
5	PC263	2	Pull-Action Toggle Clamp



## Cleanout Sections (Continued)

<b>0</b>	<b>32-703-660</b>		<b>6' Cleanout Section</b>
1	32-407	1	6' Cover
2	32-1091	1	6' Center Pan
3	32-13-830-1006	1	6' Cleanout Section Weldment
4	32-13-830-1001	1	Cleanout Door Weldment
5	PC263	2	Pull-Action Toggle Clamp
<b>0</b>	<b>32-703-665</b>		<b>6' 6" Cleanout Section</b>
1	32-406	1	6' 6" Cover
2	32-1090	1	6' 6" Center Pan
3	32-13-830-1016	1	6' 6" Cleanout Section Weldment
4	32-13-830-1001	1	Cleanout Door Weldment
5	PC263	2	Pull-Action Toggle Clamp
<b>0</b>	<b>32-703-670</b>		<b>7' Cleanout Section</b>
1	32-405	1	7' Cover
2	32-1089	1	7' Center Pan
3	32-13-830-1007	1	7' Cleanout Section Weldment
4	32-13-830-1001	1	Cleanout Door Weldment
5	PC263	2	Pull-Action Toggle Clamp
<b>0</b>	<b>32-703-675</b>		<b>7' 6" Cleanout Section</b>
1	32-404	1	7' 6" Cover
2	32-1088	1	7' 6" Center Pan
3	32-13-830-1017	1	7' 6" Cleanout Section Weldment
4	32-13-830-1001	1	Cleanout Door Weldment
5	PC263	2	Pull-Action Toggle Clamp
<b>0</b>	<b>32-703-680</b>		<b>8' Cleanout Section</b>
1	32-403	1	8' Cover
2	32-1087	1	8' Center Pan
3	32-13-830-1008	1	8' Cleanout Section Weldment
4	32-13-830-1001	1	Cleanout Door Weldment
5	PC263	2	Pull-Action Toggle Clamp
<b>0</b>	<b>32-703-685</b>		<b>8' 6" Cleanout Section</b>
1	32-402	1	8' 6" Cover
2	32-1086	1	8' 6" Center Pan
3	32-13-830-1018	1	8' 6" Cleanout Section Weldment
4	32-13-830-1001	1	Cleanout Door Weldment
5	PC263	2	Pull-Action Toggle Clamp
<b>0</b>	<b>32-703-690</b>		<b>9' Cleanout Section</b>
1	32-401	1	9' Cover
2	32-1085	1	9' Center Pan
3	32-13-830-1009	1	9' Cleanout Section Weldment
4	32-13-830-1001	1	Cleanout Door Weldment
5	PC263	2	Pull-Action Toggle Clamp
<b>0</b>	<b>32-703-695</b>		<b>9' 6" Cleanout Section</b>
1	32-822	1	9' 6" Cover
2	32-1084	1	9' 6" Center Pan
3	32-13-830-1019	1	9' 6" Cleanout Section Weldment
4	32-13-830-1001	1	Cleanout Door Weldment
5	PC263	2	Pull-Action Toggle Clamp
<b>0</b>	<b>32-703-600</b>		<b>10' Cleanout Section</b>
1	32-057	1	10' Cover
2	32-1083	1	10' Center Pan
3	32-13-830-1010	1	10' Cleanout Section Weldment
4	32-13-830-1001	1	Cleanout Door Weldment
5	PC263	2	Pull-Action Toggle Clamp

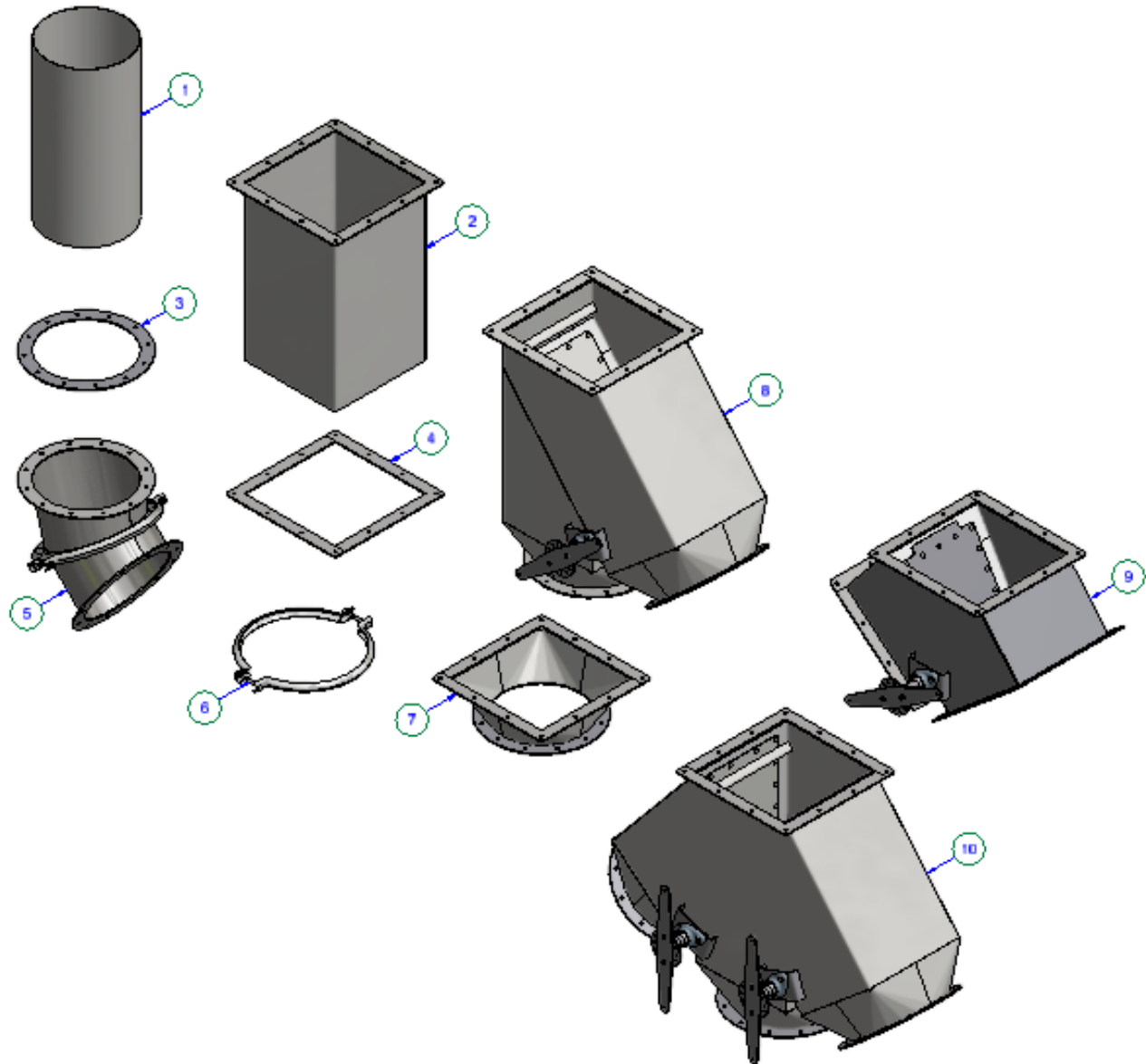


## **Model 1616 - Discharge Chute**



<b><u>Part No.</u></b>	<b><u>Description</u></b>
<b>32-712-000</b>	<b>10 Degree Transition Down Spout</b>
<b>32-712-010</b>	<b>10 Degree Transition Down Spout</b>
<b>32-712-015</b>	<b>15 Degree Transition Down Spout</b>
<b>32-712-020</b>	<b>20 Degree Transition Down Spout</b>
<b>32-712-025</b>	<b>25 Degree Transition Down Spout</b>
<b>32-712-030</b>	<b>30 Degree Transition Down Spout</b>
<b>32-712-035</b>	<b>35 Degree Transition Down Spout</b>
<b>32-712-040</b>	<b>40 Degree Transition Down Spout</b>
<b>32-712-045</b>	<b>45 Degree Transition Down Spout</b>
<b>32-712-050</b>	<b>50 Degree Transition Down Spout</b>
<b>32-712-055</b>	<b>55 Degree Transition Down Spout</b>
<b>32-712-060</b>	<b>60 Degree Transition Down Spout</b>

## Model 1616 - Spouting Options

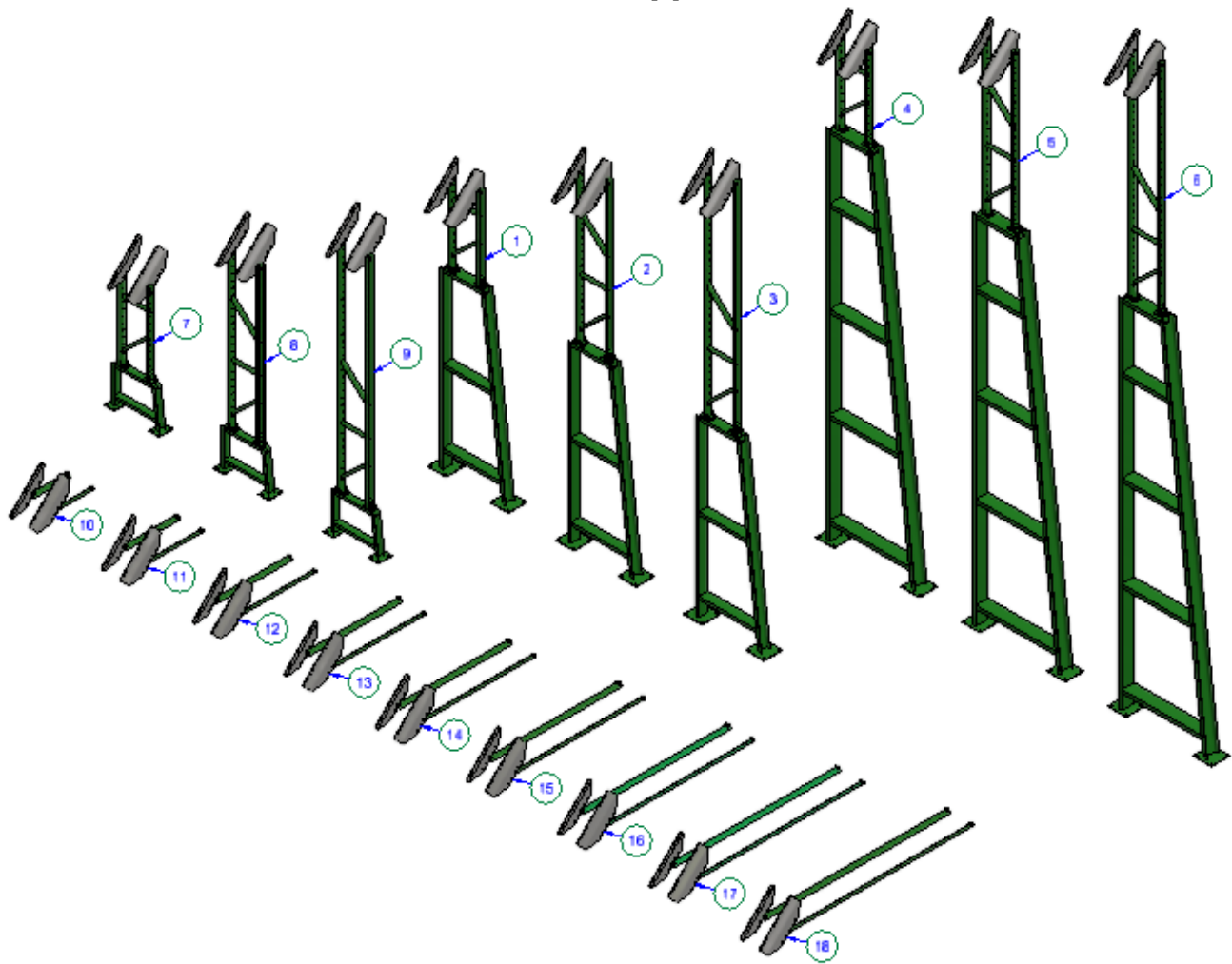


<u>Item</u>	<u>Part No.</u>	<u>Description</u>	<u>Item</u>	<u>Part No.</u>	<u>Description</u>
1	351-012-005	12" Round Spouting, 6"	1	351-012-105	12" Round Spouting, 10' 6"
1	351-012-010	12" Round Spouting, 1' 6"	1	351-012-110	12" Round Spouting, 11'
1	351-012-015	12" Round Spouting, 1' 6"	1	351-012-115	12" Round Spouting, 11' 6"
1	351-012-020	12" Round Spouting, 2'	1	351-012-120	12" Round Spouting, 12'
1	351-012-025	12" Round Spouting, 2' 6"	1	351-012-125	12" Round Spouting, 12' 6"
1	351-012-030	12" Round Spouting, 3'	1	351-012-130	12" Round Spouting, 13'
1	351-012-035	12" Round Spouting, 3' 6"	1	351-012-135	12" Round Spouting, 13' 6"
1	351-012-040	12" Round Spouting, 4'	1	351-012-140	12" Round Spouting, 14'
1	351-012-045	12" Round Spouting, 4' 6"	1	351-012-145	12" Round Spouting, 14' 6"
1	351-012-050	12" Round Spouting, 5'	1	351-012-150	12" Round Spouting, 15'
1	351-012-055	12" Round Spouting, 5' 6"	1	351-012-155	12" Round Spouting, 15' 6"
1	351-012-060	12" Round Spouting, 6'	1	351-012-160	12" Round Spouting, 16'
1	351-012-065	12" Round Spouting, 6' 6"	1	351-012-165	12" Round Spouting, 16' 6"
1	351-012-070	12" Round Spouting, 7'	1	351-012-170	12" Round Spouting, 17'
1	351-012-075	12" Round Spouting, 7' 6"	1	351-012-175	12" Round Spouting, 17' 6"
1	351-012-080	12" Round Spouting, 8'	1	351-012-180	12" Round Spouting, 18'
1	351-012-085	12" Round Spouting, 8' 6"	1	351-012-185	12" Round Spouting, 18' 6"
1	351-012-090	12" Round Spouting, 9'	1	351-012-190	12" Round Spouting, 19'
1	351-012-095	12" Round Spouting, 9' 6"	1	351-012-195	12" Round Spouting, 19' 6"
1	351-012-100	12" Round Spouting, 10'	1	351-012-200	12" Round Spouting, 20'

## Spouting Options (Continued)

<u>Item</u>	<u>Part No.</u>	<u>Description</u>	<u>Item</u>	<u>Part No.</u>	<u>Description</u>
2	351-114-010	14" Square Spouting, 1'	3	351-012-001	12"ID Flange Ring
2	351-114-015	14" Square Spouting, 1' 6"	4	351-014-003	14" Square Flange
2	351-114-020	14" Square Spouting, 2'	5	351-312-012	60 Deg Adj Elbow Assy
2	351-114-025	14" Square Spouting, 2' 6"	6	TW26	12" Flange Ring Clamp
2	351-114-030	14" Square Spouting, 3'	7	351-314-112	14" Square To 12" Round
2	351-114-035	14" Square Spouting, 3' 6"	8	351-214-212	14" "K" Valve Assy
2	351-114-040	14" Square Spouting, 4'	9	351-214-014	2-Way "Y" Valve Assy
2	351-114-045	14" Square Spouting, 4' 6"	10	351-214-312	3-Way Valve Assy
2	351-114-050	14" Square Spouting, 5'			
2	351-114-055	14" Square Spouting, 5' 6"			
2	351-114-060	14" Square Spouting, 6'			
2	351-114-065	14" Square Spouting, 6' 6"			
2	351-114-070	14" Square Spouting, 7'			
2	351-114-075	14" Square Spouting, 7' 6"			
2	351-114-080	14" Square Spouting, 8'			
2	351-114-085	14" Square Spouting, 8' 6"			
2	351-114-090	14" Square Spouting, 9'			
2	351-114-095	14" Square Spouting, 9' 6"			

## Model 1616 - Support Stands



<b>Item</b>	<b>Part No.</b>	<b>Description</b>
1	32-14-910-1004	10' To 14' Adjustable Stand Assembly, 1616
2	32-14-910-1005	10' To 18' Adjustable Stand Assembly, 1616
3	32-14-910-1006	10' To 21'-6" Adjustable Stand Assembly, 1616
4	32-14-910-10010	20' To 24' Adjustable Stand Assembly, 1616
5	32-14-910-10011	20' To 28' Adjustable Stand Assembly, 1616
6	32-14-910-10012	20' To 31'-6" Adjustable Stand Assembly, 1616
7	32-14-910-1016	2'-6" To 6'-6" Adjustable Stand Assembly, 1616
8	32-14-910-1017	2'-6" To 10'-6" Adjustable Stand Assembly, 1616
9	32-14-910-1018	2'-6" To 14' Adjustable Stand Assembly, 1616
10	32-603-02	2' Brace Arm Assembly
11	32-603-03	3' Brace Arm Assembly
12	32-603-04	4' Brace Arm Assembly
13	32-603-05	5' Brace Arm Assembly
14	32-603-06	6' Brace Arm Assembly
15	32-603-07	7' Brace Arm Assembly
16	32-603-08	8' Brace Arm Assembly
17	32-603-09	9' Brace Arm Assembly
18	32-603-10	10' Brace Arm Assembly

# Notes

Specifications subject to change without notice  
Copyright 2001 Doyle Equipment Mfg. Co., Inc.



## Doyle Equipment Mfg. Co., Inc.

P.O. Box 3024, 4001 Broadway  
Quincy, Illinois, USA 62305-3024

Toll Free: 800-788-8085

Phone: 217-222-1592

Fax: 217-223-3655

Email: [doyle@doylemfg.com](mailto:doyle@doylemfg.com)

Website: [www.doylemfg.com](http://www.doylemfg.com)