

4

3

2

1

D

D

C

C

B

B

A

A

6TDDR BLENDER
12IN SUBFRAME

MK-0064-2-901
1616 FLIGHTSTAR

BAGGING HOPPER
FOOTPRINT

6TON CONDITIONER
HOPPER

6TON SPLIT
HOPPER (X3)

MK-0064-2-900
1616 FLIGHTSTAR


NOTE:

1. NOT FOR CONSTRUCTION, DRAWING IS FOR QUOTE PURPOSES ONLY.

2. IT IS THE CUSTOMER'S RESPONSIBILITY TO PROVIDE:

A. SAFE ACCESS FOR INSTALLATION, MAINTENANCE, AND OPERATION OF ALL DOYLE EQUIPMENT.

B. ADEQUATE SUPPORT, INCLUDING ENSURING THE BUILDING STRUCTURE IS ENGINEERED FOR THE WEIGHT OF ALL DOYLE EQUIPMENT.



Doyle Equipment Mfg. Co., Inc.
4001 Broadway, P.O. Box 3024, Quincy, IL 62305
Toll Free: 800-788-8085 Fax: 217-223-3655

Property of the Doyle MFG. CO. - Palmyra, MO and is loaned to the recipient, subject to return upon demand. Its contents are confidential and must not be copied or submitted to outside parties for use or examination.

CUSTOMER	[REDACTED]		
DESCRIPTION	6TON AUTOBATCH® BLEND SYSTEM		
LOCATION	Rancho Cordova, CA		REVISION B
DATE	ENGINEER	SHEET	PART NUMBER
2/24/2021	astratton	1 OF 10	MK-0064-2

4

3

2

1

4

3

2

1

D

D

C

C

B

B

A

A

77'-1"
SYSTEM OVERALL

(15'-8")

41'-9"
SYSTEM OVERALL

(30'-10")

(7'-6")

(8'-4")

8'-8" FILL
HEIGHT

15°

25'-3"

(19'-10")

(7'-6")

50°

10°

50°

B	LAYOUT REVERSED, HOPPERS RESEQUENCED	12/10/2021	AS
A.1	ADDED FOTTING DIMENSION PAGES FOR INSTALLATION	11/10/2021	AS
A	NEW QUOTE	2/24/2021	AS
REV	DESCRIPTION	DATE	ENG
REVISION HISTORY			

Doyle Equipment Mfg. Co., Inc.
 4001 Broadway, P.O. Box 3024, Quincy, IL 62305
 Toll Free: 800-788-8085 Fax: 217-223-3655

Home of Worldwide Quality Blending, Conveying, Tending & Spreading Products!
 Property of the Doyle MFG. CO. - Quincy, MO and is loaned to the recipient, subject to return upon demand. Its contents are confidential and must not be copied or submitted to outside parties for use or examination.

CUSTOMER	[REDACTED]		SALES REP	[REDACTED]		
DESCRIPTION	6TON AUTOBATCH® BLEND SYSTEM					
LOCATION	Rancho Cordova, CA			REVISION	B	
DATE	2/24/2021	ENGINEER	astratton	SHEET 2 OF 10	PART NUMBER	MK-0064-2

4

3

2

1

4

3

2

1

D

D

C

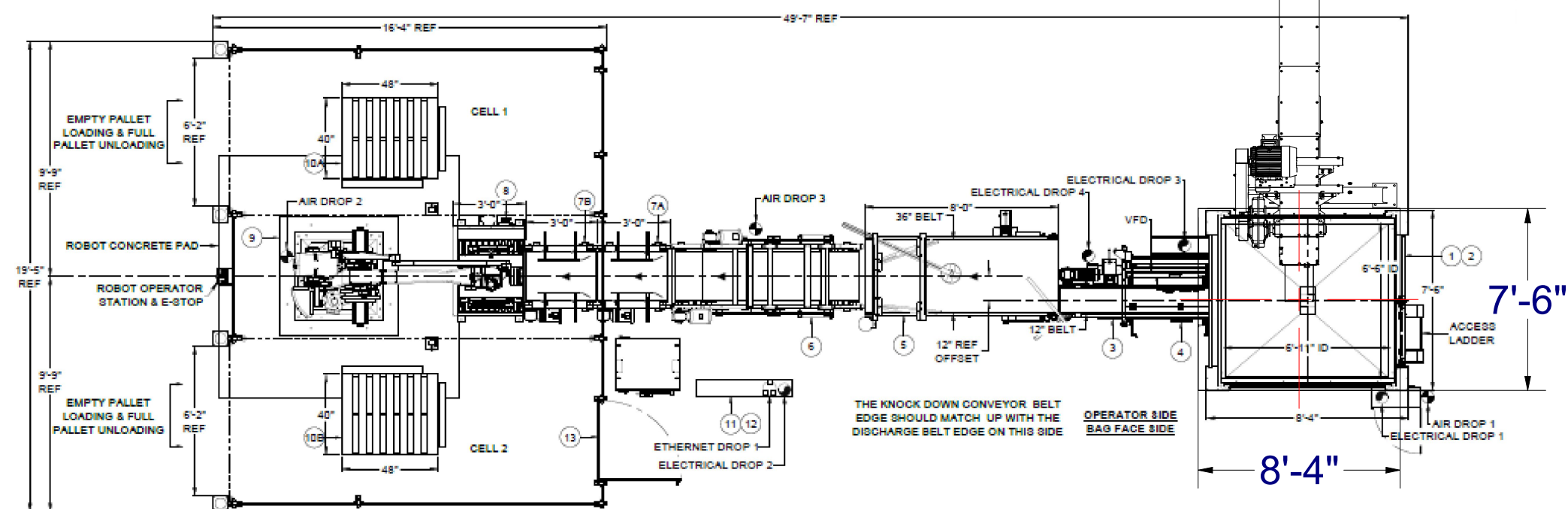
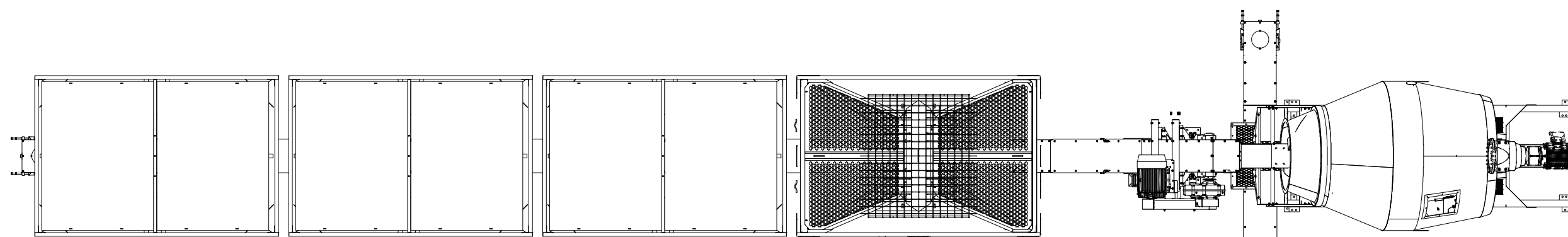
C

B

B

A

A



**BAGGER SYSTEM
REFERENCE VIEW**

Doyle Equipment Mfg. Co., Inc.
 4001 Broadway, P.O. Box 3024, Quincy, IL, 62305
 Toll Free: 800-788-8085 Fax: 217-223-3655

Home of Worldwide Quality Blending, Conveying, Tending & Spreading Products!
 Property of the Doyle Mfg. Co., Palmyra, MO and is loaned to the recipient, subject to return upon demand. Its contents are confidential and must not be copied or submitted to outside parties for use or examination.

CUSTOMER	SALES REP
DESCRIPTION	6TON AUTOBATCH® BLEND SYSTEM
LOCATION	Rancho Cordova, CA
DATE	2/24/2021
ENGINEER	astratton
SHEET	3 OF 10
PART NUMBER	MK-0064-2
REVISION	B

4

3

2

1

4

3

2

1

Parts List			
ITEM	QTY	PART NUMBER	DESCRIPTION
1	1	32-702-500	4' TAIL SECTION ASSY, W/ DRAIN
2	4	32-033-90024	3' HOPPER ASSEMBLY W/ END FLANGE LESS CHOKER DOORS
3	1	32-703-770	7' CLEANOUT SECTION ASSEMBLY 1616
4	3	32-703-555	5'-6" SECTION ASSEMBLY 1616
5	3	32-703-540	4' SECTION ASSEMBLY 1616
6	1	32-703-520	2' SECTION ASSEMBLY 1616
7	1	32-703-510	1' SECTION ASSEMBLY 1616
8	1	32-704-550	50 DEGREE CURVE SECTION ASSEMBLY
9	1	32-707-510	10 DEG REVERSE CURVE ASSEMBLY 1616
10	1	32-750-401	1616 DRIVE SECTION, 40 HP, RH 200 TPH, W/ BRACKET, LESS MOTOR
11	1	32-712-040	40 DEGREE TRANSITION DOWN SPOUT
12	1	32-717-025	2'-6" X 14" SQR TRUCK ANGLED SPOUT - SS
13	1	22-14-910-1017	2'-6" To 10'-6" Adjustable Stand Assembly, 1616
14	16	CS-0067-9001	DRAG CONVEYOR ADJUSTABLE LEG ASSEMBLY
15	1	32-603-03	3' BRACE ARM ASSEMBLY
16	16	32-13-730-1001	1616 BOLT KIT W/RUBBER SEAL
17	1	22-103-7002	1212 BOLT KIT - HEAD TO TRANSION MTG
18	1	32-103-7001	1616 BOLT KIT - TRANSION TO SPOUT MTG
19	13	32-721-010	ROLL OF CHAIN WITH PADDLES ATTACHED
20	4	MK-0064-2-9000	CUSTOM 1616FS TAPERED HOPPER EXTENSION ASSEMBLY

D

D

C

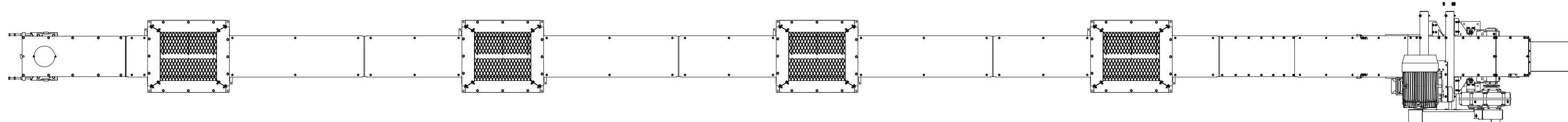
C

B

B

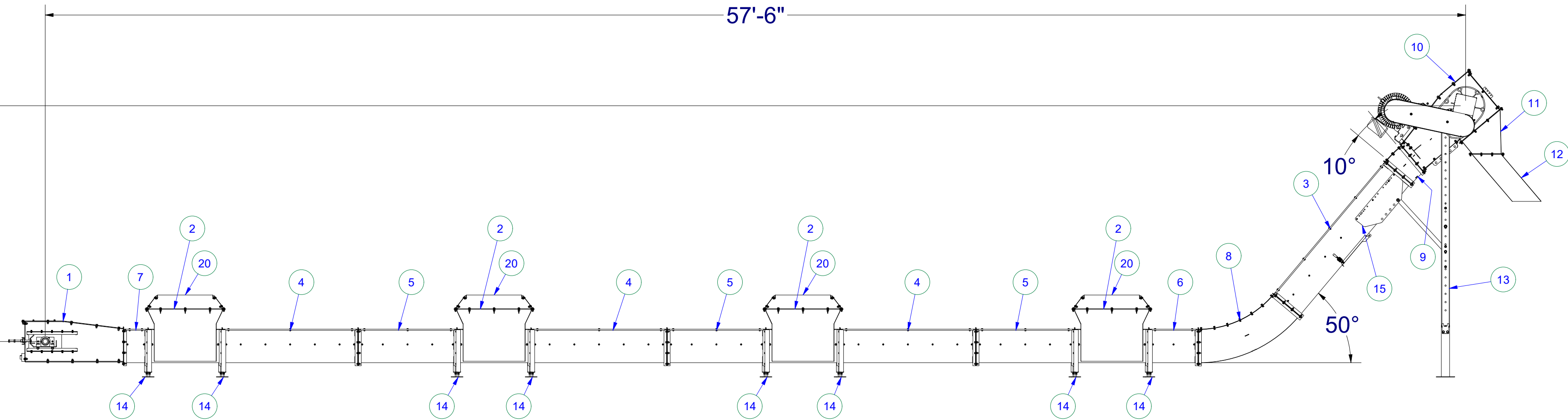
A

A



57'-6"

9'-7"



MK-0064-2-900
1616 FLIGHTSTAR

Doyle Equipment Mfg. Co., Inc.
 4001 Broadway, P.O. Box 3024, Quincy, IL 62305
 Toll Free: 800-788-8085 Fax: 217-223-3655

Home of Worldwide Quality Blending, Conveying, Tending & Spreading Products!
 Property of the Doyle MFG. CO. - Palmyra, MO and is loaned to the recipient, subject to return upon demand. Its contents are confidential and must not be copied or submitted to outside parties for use or examination.

CUSTOMER	SALES REP
DESCRIPTION	6TON AUTOBATCH® BLEND SYSTEM
LOCATION	Rancho Cordova, CA
DATE	2/24/2021
ENGINEER	astratton
SHEET	4 OF 10
PART NUMBER	MK-0064-2
REVISION	B

4

3

2

1

4

3

2

1

Parts List			
ITEM	QTY	PART NUMBER	DESCRIPTION
1	1	32-702-500	4' TAIL SECTION ASSY, W/ DRAIN
2	1	32-033-90029	3' HOPPER ASSEMBLY 9" TALLER W/ END FLANGE LESS CHOKER DOORS
3	1	32-703-700	10' CLEANOUT SECTION ASSEMBLY 1616
4	1	32-703-500	10' SECTION ASSEMBLY 1616
5	1	32-703-545	4'-6" SECTION ASSEMBLY 1616
6	1	32-703-540	4' SECTION ASSEMBLY 1616
7	1	32-703-510	1' SECTION ASSEMBLY 1616
8	1	32-704-550	50 DEGREE CURVE SECTION ASSEMBLY
9	1	32-707-515	15 DEG REVERSE CURVE ASSEMBLY 1616
10	1	32-750-301	1616 DRIVE SECTION, 30 HP, RH 200 TPH, W/ BRACKET, LESS MOTOR
11	1	32-712-035	35 DEGREE TRANSITION DOWN SPOUT
12	1	32-717-025	2'-6" X 14" SQR TRUCK ANGLED SPOUT - SS
13	1	22-14-910-1010	20' To 24' Adjustable Stand Assembly, 1616
14	1	22-14-910-1018	2'-6" To 14' Adjustable Stand Assembly, 1616
15	2	32-603-04	4' BRACE ARM ASSEMBLY
16	8	32-13-730-1001	1616 BOLT KIT W/RUBBER SEAL
17	1	22-103-7002	1212 BOLT KIT - HEAD TO TRANSION MTG
18	1	32-103-7001	1616 BOLT KIT - TRANSION TO SPOUT MTG
19	10	32-721-010	ROLL OF CHAIN WITH PADDLES ATTACHED

D

D

C

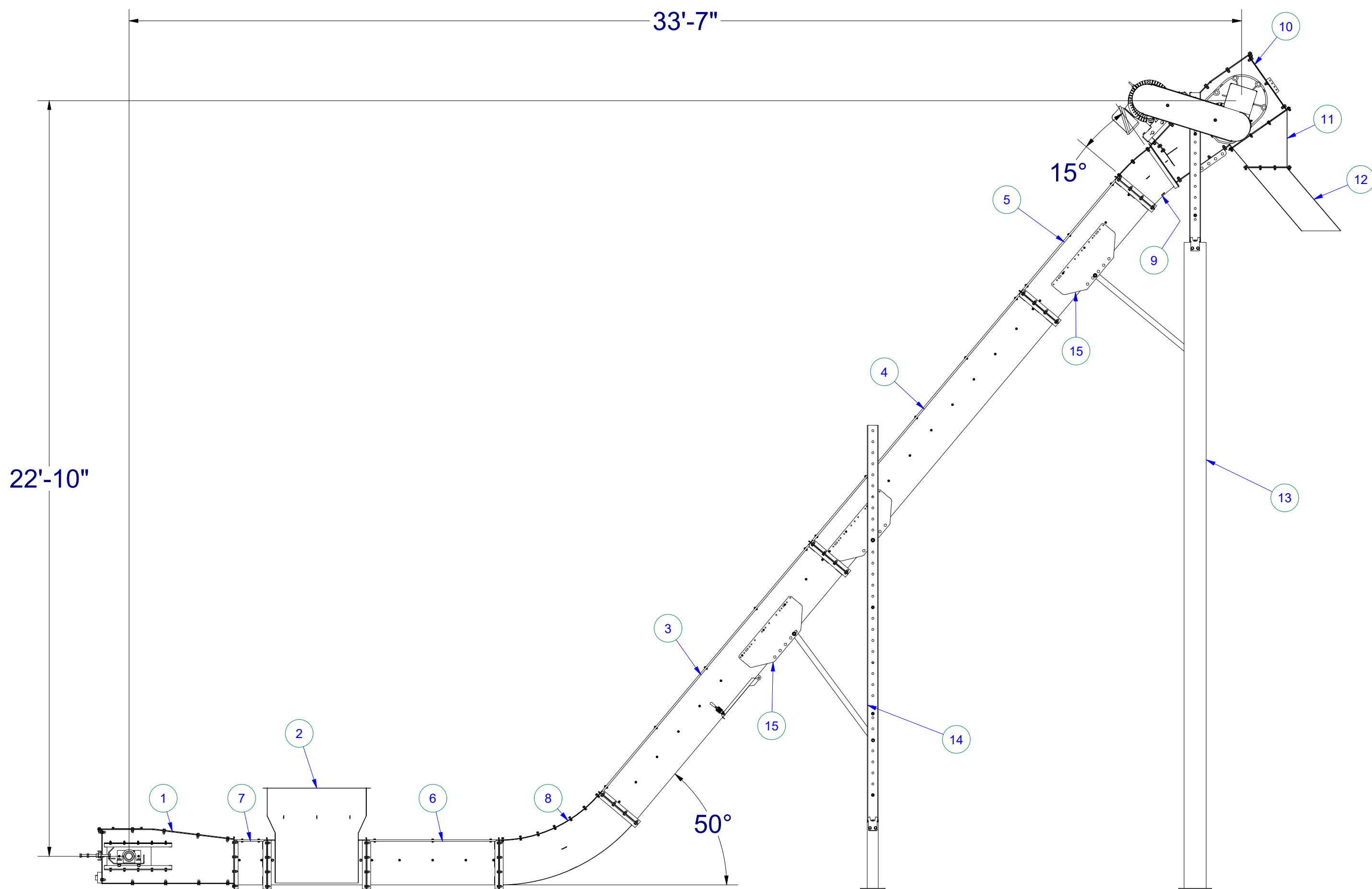
C

B

B

A

A



MK-0064-2-901
1616 FLIGHTSTAR

Doyle Equipment Mfg. Co., Inc.
 4001 Broadway, P.O. Box 3024, Quincy, IL, 62305
 Toll Free: 800-788-8085 Fax: 217-223-3655

Home of Worldwide Quality Blending, Conveying, Tending & Spreading Products!

Property of the Doyle MFG. CO. - Palmyra, MO and is loaned to the recipient, subject to return upon demand. Its contents are confidential and must not be copied or submitted to outside parties for use or examination.

CUSTOMER	SALES REP
6TON AUTOBATCH® BLEND SYSTEM	
LOCATION Rancho Cordova, CA	
DATE 2/24/2021	REVISION B
ENGINEER astratton	PART NUMBER MK-0064-2
SHEET 5 OF 10	

4

3

2

1

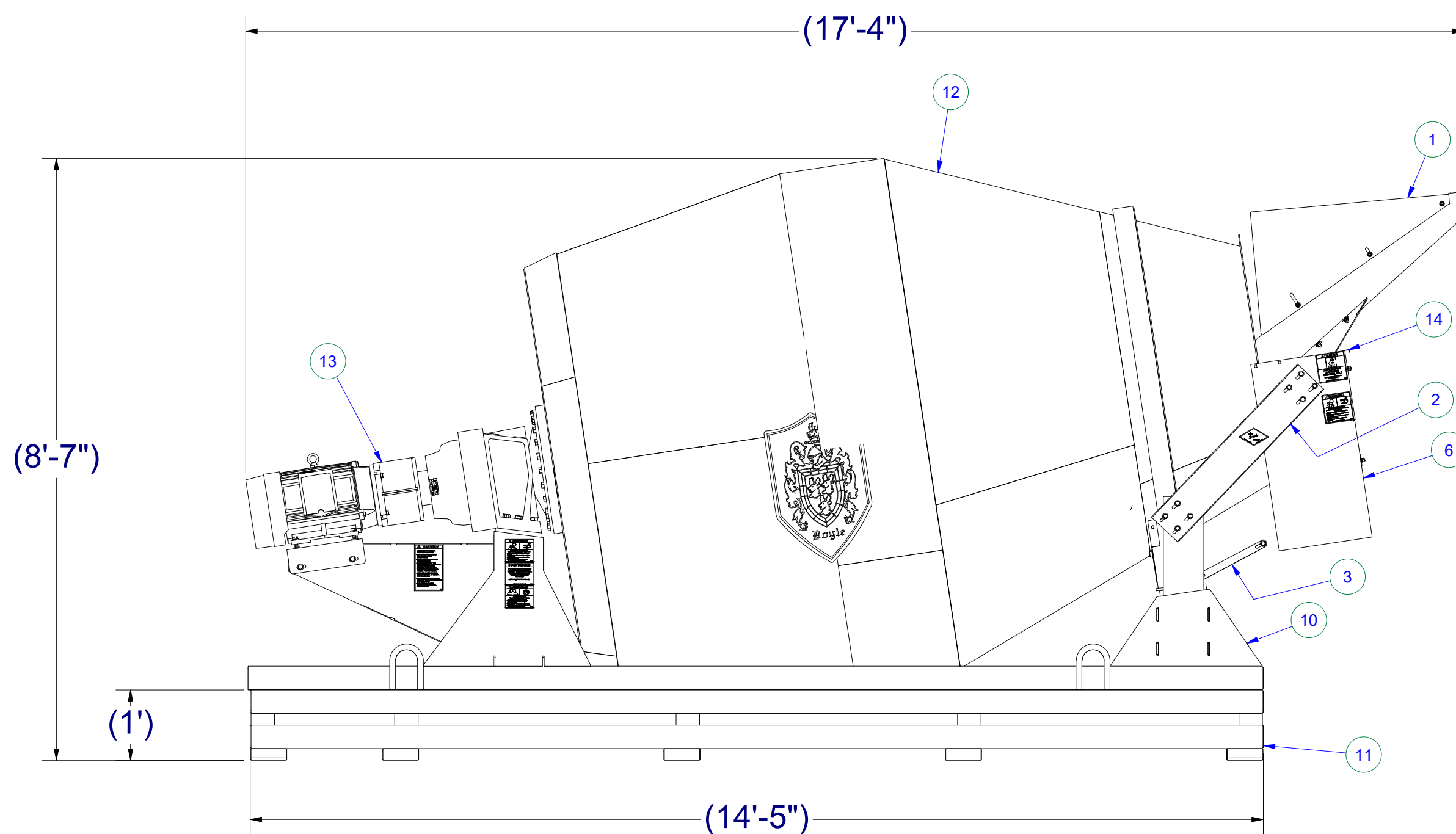
4

3

2

1

Parts List			
ITEM	QTY	PART NUMBER	DESCRIPTION
1	1	01-00-930-1002	304 STAINLESS 90 DEG BLENDER CHUTE
2	2	01-003-1249	5,6,8,10 TON ROTARY DISCHARGE CHUTE SUPPORT-304 STAINLESS
3	1	01-003-1250	5,6,8,10 TON ROTARY DISCHARGE CHUTE CENTER SUPPORT ARM-304 STAINLESS
4	1	01-003-1261	5,6,8,10 TON ROTARY MOTOR MOUNT PLATE-304 STAINLESS
5	1	01-003-8010	COMMON VERTICAL MANWAY DOOR WELDMENT - 304 SS
6	1	01-003-8013	5,6,8,10 TON ROTARY DISCHARGE CHUTE WELDMENT STANDARD-304 STAINLESS
7	1	01-003-9000	5,6,8,10 TON ROTARY CASTER GUARD ASSEMBLY LH-304 STAINLESS
8	1	01-003-9001	5,6,8,10 TON ROTARY CASTER GUARD ASSEMBLY RH-304 STAINLESS
9	1	01-063-8000	6T ROTARY INTERNAL AUGER-304 STAINLESS
10	1	01-063-8004	6 TON DIRECT DRIVE ROTARY FRAME WELDMENT-304 STAINLESS STEEL
11	1	01-063-8005	6T-DD 12" SUBFRAME-304 STAINLESS STEEL
12	1	01-063-8021	6 TON 12 GA, STANDARD MOUTH, DIRECT DRIVE WELDMENT 304 STAINLESS
13	1	01-911	DIRECT DRIVE ASSEMBLY
14	1	WLC-0009-2-9000	CUSTOM 8TDDR FRONT MATERIAL SHEILD WELDMENT



MK-0064-2
6TON DDR BLENDER

Doyle Equipment Mfg. Co., Inc.
4001 Broadway, P.O. Box 3024, Quincy, IL, 62305
Toll Free: 800-788-8085 Fax: 217-223-3655

Home of Worldwide Quality Blending, Conveying, Tending & Spreading Products!
Property of the Doyle MFG. CO., Quincy, MO and is loaned to the recipient, subject to return upon demand. Its contents are confidential and must not be copied or submitted to outside parties for use or examination.

CUSTOMER	[REDACTED]		
DESCRIPTION	6TON AUTOBATCH® BLEND SYSTEM		
LOCATION	Rancho Cordova, CA		REVISION B
DATE	2/24/2021	ENGINEER	astratton
SHEET	6 OF 10	PART NUMBER	MK-0064-2

4

3

2

1

4

3

2

1

D

D

C

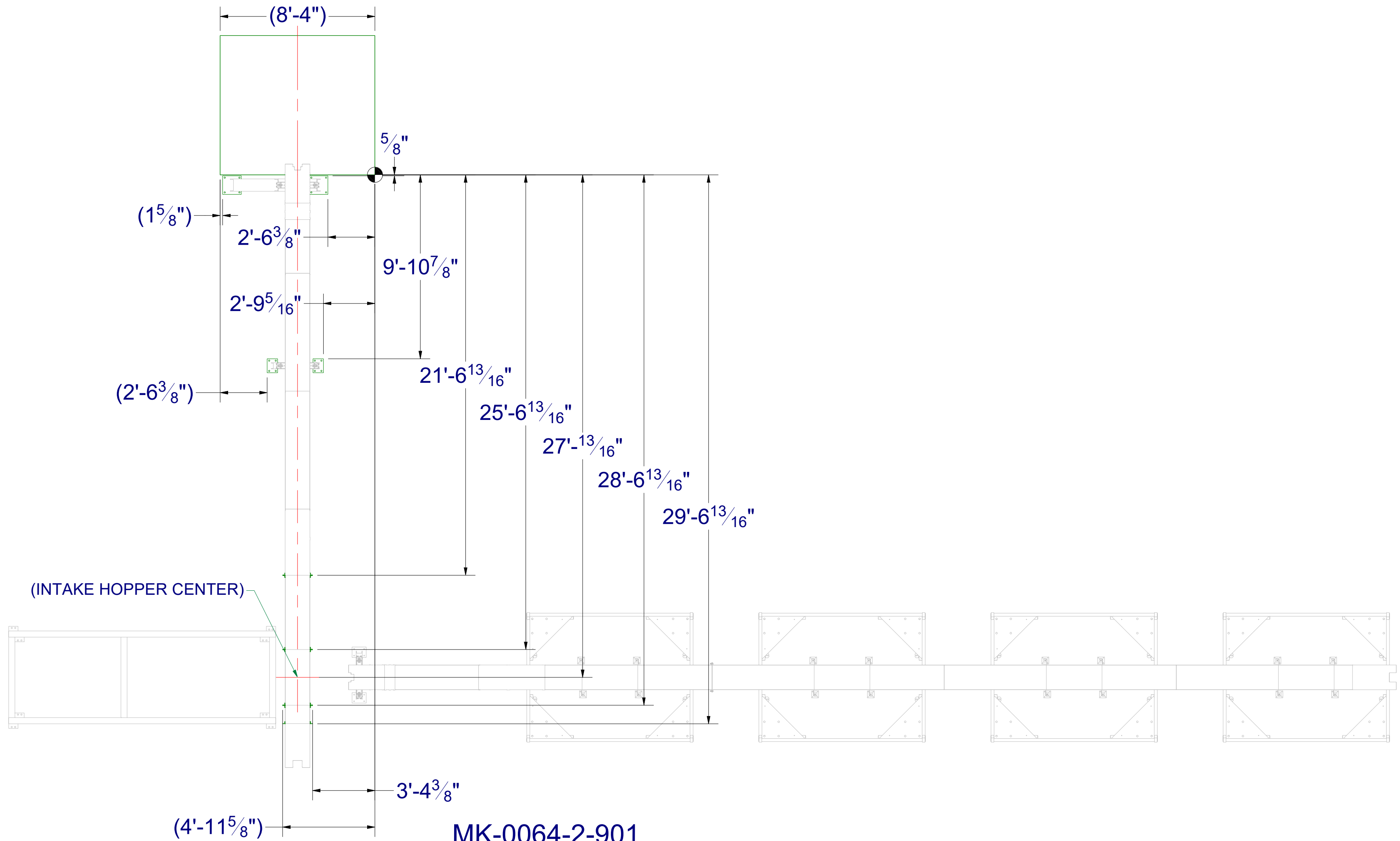
C

B

B

A

A



**MK-0064-2-901
FLIGHTSTAR FOOTING**


Doyle Equipment Mfg. Co., Inc.
 4001 Broadway, P.O. Box 3024, Quincy, IL 62305
 Toll Free: 800-788-8085 Fax: 217-223-3655

Home of Worldwide Quality Blending, Conveying, Tending & Spreading Products!
Property of the Doyle MFG. CO. - Palmyra, MO and is loaned to the recipient, subject to return upon demand. Its contents are confidential and must not be copied or submitted to outside parties for use or examination.

CUSTOMER	[REDACTED]		
DESCRIPTION	6TON AUTOBATCH® BLEND SYSTEM		
LOCATION	Rancho Cordova, CA		REVISION B
DATE	ENGINEER	SHEET	PART NUMBER
2/24/2021	astratton	7 OF 10	MK-0064-2

4

3

2

1

4

3

2

1

D

D

C

C

B

B

A

A

(8'-4")

(7'-6")

24'-3¹³/₁₆"

(27'-1³/₁₆"

(29'-9¹³/₁₆"

(6")

5'-4³/₁₆"

(19'-8¹¹/₁₆"

(INTAKE HOPPER CENTER)

MK-0064-2 6TDDR BLENDER FOOTING

Doyle Equipment Mfg. Co., Inc.
 4001 Broadway, P.O. Box 3024, Quincy, IL 62305
 Toll Free: 800-788-8085 Fax: 217-223-3655

Home of Worldwide Quality Blending, Conveying, Tending & Spreading Products!
 Property of the Doyle MFG. CO. - Palmyra, MO and is loaned to the recipient, subject to return upon demand. Its contents are confidential and must not be copied or submitted to outside parties for use or examination.

CUSTOMER	[REDACTED]		SALES REP	[REDACTED]	
DESCRIPTION	6TON AUTOBATCH® BLEND SYSTEM				
LOCATION	Rancho Cordova, CA			REVISION	B
DATE	2/24/2021	ENGINEER	astratton	SHEET 8 OF 10	
PART NUMBER	MK-0064-2				

4

3

2

1

D

D

C

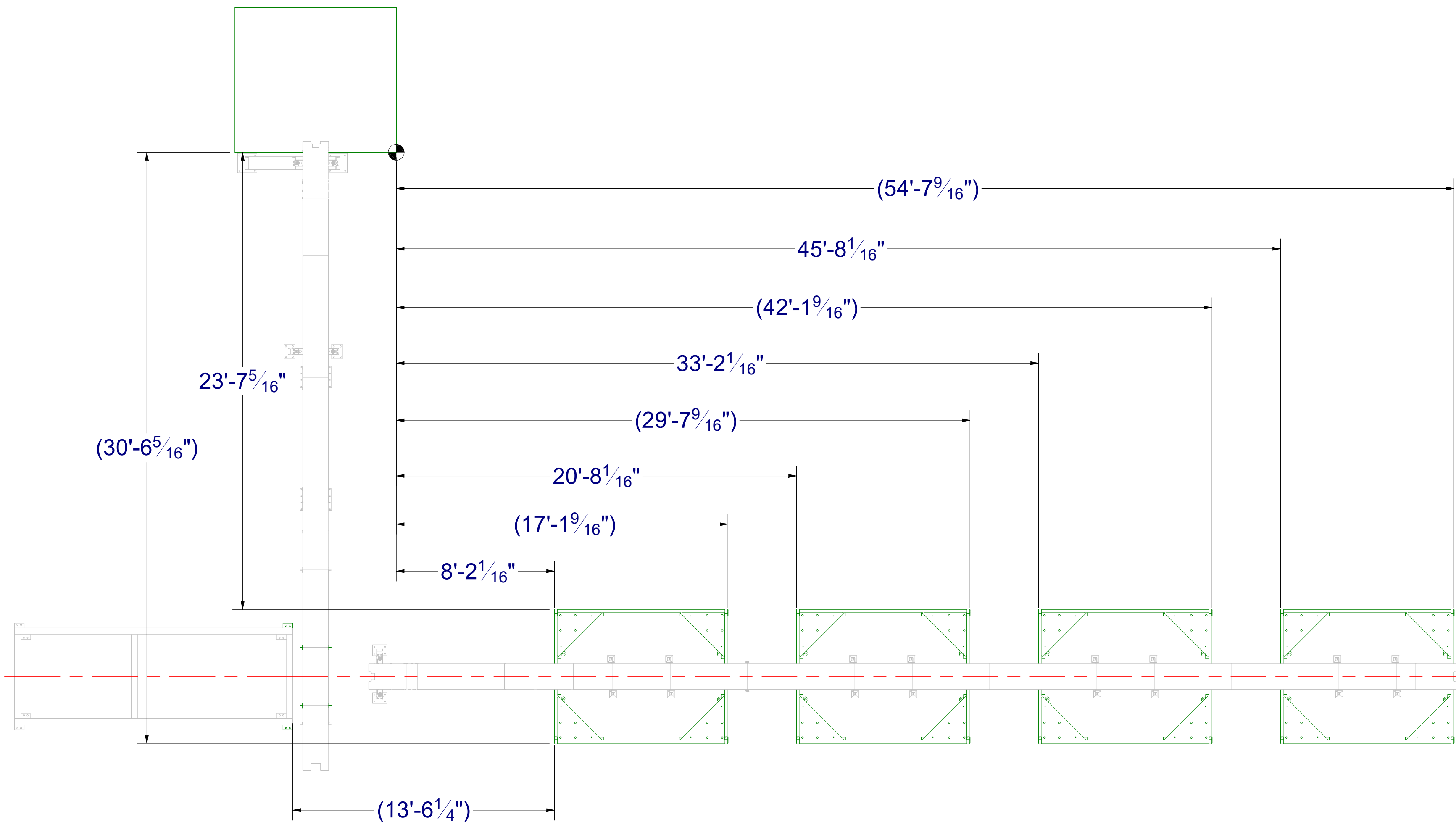
C

B



B

A

A



**MK-0064-2 HOPPERS
SCALE FOOTING**

 Doyle Equipment Mfg. Co., Inc. 4001 Broadway, P.O. Box 3024, Quincy, IL 62305 Toll Free: 800-788-8085 Fax: 217-223-3655		
<small>Home of Worldwide Quality Blending, Conveying, Tending & Spreading Products! Property of the Doyle MFG. CO., Quincy, MO and is loaned to the recipient, subject to return upon demand. Its contents are confidential and must not be copied or submitted to outside parties for use or examination.</small>		
CUSTOMER	[REDACTED]	
DESCRIPTION	6TON AUTOBATCH® BLEND SYSTEM	
LOCATION	Rancho Cordova, CA	
DATE	ENGINEER	REVISION
2/24/2021	astratton	REVISION B
SHEET 9 OF 10		PART NUMBER
		MK-0064-2

4

3

2

1

4

3

2

1

D

D

C

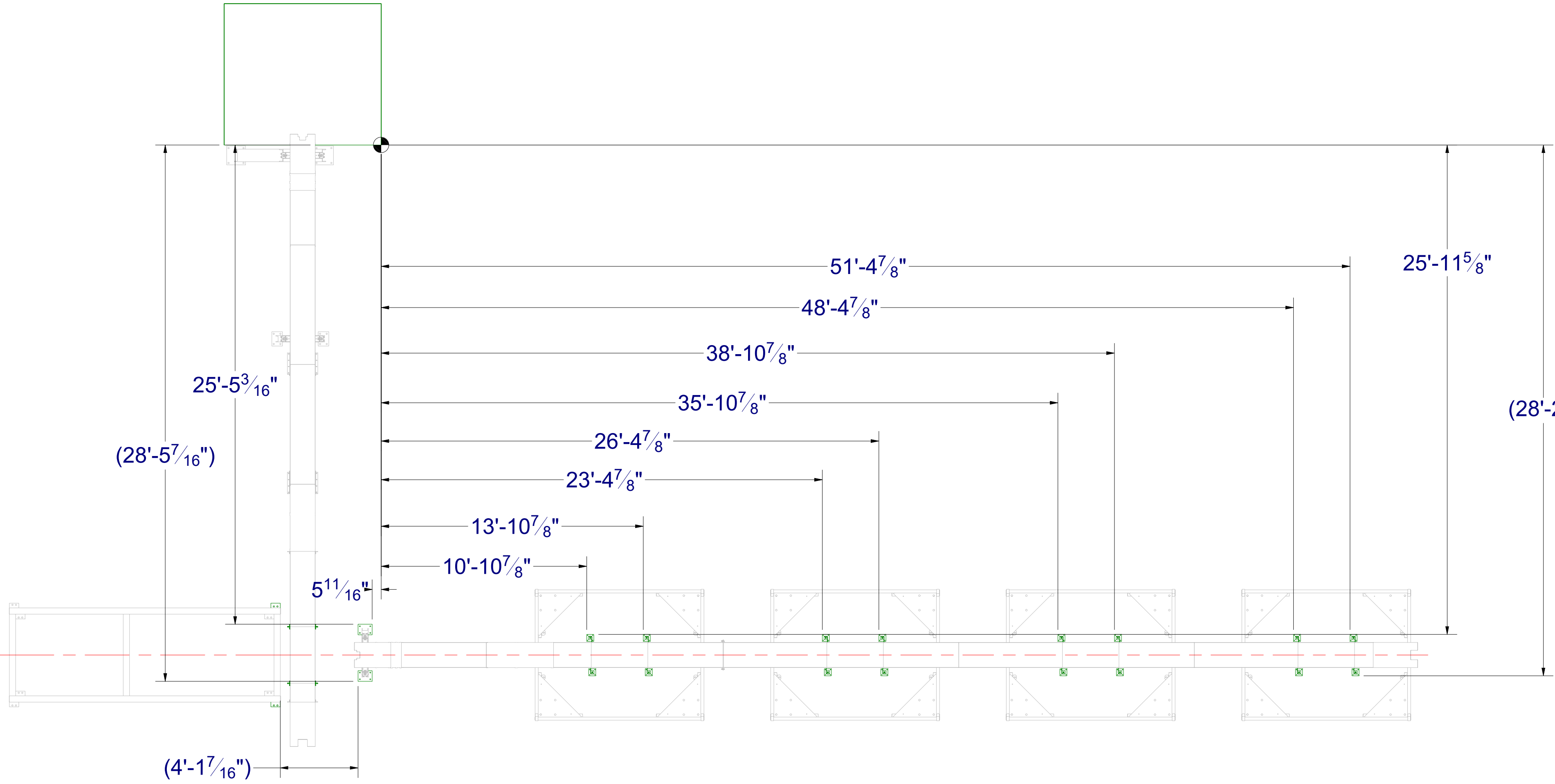
C

B

B

A

A



**MK-0064-2-900
FLIGHTSTAR FOOTING**

Doyle Equipment Mfg. Co., Inc.
 4001 Broadway, P.O. Box 3024, Quincy, IL 62305
 Toll Free: 800-788-8085 Fax: 217-223-3655

Home of Worldwide Quality Blending, Conveying, Tending & Spreading Products!
 Property of the Doyle MFG. CO. - Palmyra, MO and is loaned to the recipient, subject to return upon demand. Its contents are confidential and must not be copied or submitted to outside parties for use or examination.

CUSTOMER	[REDACTED]		SALES REP	[REDACTED]	
DESCRIPTION	6TON AUTOBATCH® BLEND SYSTEM				
LOCATION	Rancho Cordova, CA			REVISION	B
DATE	2/24/2021	ENGINEER	astratton	SHEET 10 OF 10	
PART NUMBER	MK-0064-2				