

Produce Softgel Capsules From  
Animal Gelatin or Tapioca Starch

# 4" DUAL

## SOFTGEL ENCAPSULATION SYSTEM



info@capplustech.com  
623-582-2800  
www.capplustech.com

# 4" DUAL

## SOFTGEL ENCAPSULATION SYSTEM



We call it a **“Dual” System** because it is capable of producing softgel capsules from animal gelatin or tapioca starch (vegan). With speeds up to 5 RPM and producing up to 28,000\* animal based softgels per hour, this set-up is ideal for small to medium production runs or research & development work.

All of the items pictured below can be operated in a single 500 sq. ft. temperature and humidity controlled room.

GMP product contact parts make this system suitable for use in pharmaceutical, nutraceutical, food and recreational industries.

**Gelatin Melting & Mixing Tanks** are available in many sizes to accommodate different batch requirements. The tanks are temperature controlled, jacketed and pressure rated with motors strong enough to handle the thicker starch formulas.

The **120 Liter Fill Material Transfer Tank** is mounted on a cart along with a peristaltic pump which communicates with the 5 liter hopper on the encapsulator. This is an easy way to set up the system for longer runs without the need to manually refill the hopper.

The **Chilling System** is also modular and controls the temperature of the chilling drums.

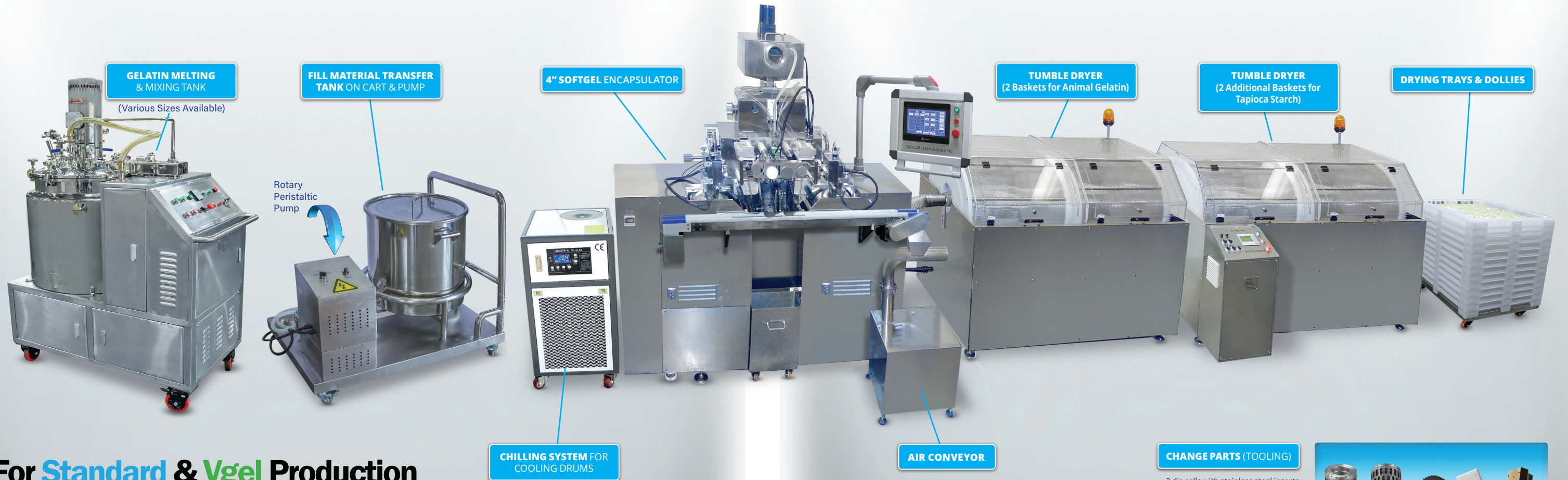
The **4” Softgel Encapsulator** uses a simple touchscreen control system to control all processing parameters. It has a 316 stainless steel medicine pump with 6 plungers capable of achieving fill accuracy to +/- 2%. The pump is flexible and capable of handling fill materials ranging from lite oils to pastes. Each plunger has a fill volume of up to 2ml. Fill volume is easily adjusted by rotating a knob on the side of the pump.

An **Air Conveyor** gently moves the freshly formed softgels to the Tumble Dryers.

The first **Tumble Dryer** containing two baskets, is controlled by the touch screen on the encapsulator and is used to run animal gelatin products. The second **Tumble Dryer** is used when running starch products. This second Dryer is a “stand alone” unit with separate controls and power requirements.

Stackable **Drying Trays with Dollies** are provided in sufficient quantity to cover the anticipated production schedule.

The system comes with one set of **Change Parts**. Additional sets are available for producing different sizes and shapes of softgels.



For **Standard & Vgel** Production

**CHANGE PARTS (TOOLING)**

- 2 die rolls with stainless steel inserts
- Teflon® coated aluminum wedge
- Solid Teflon® distribution plate
- Timing gear
- Industrial, compact storage case



\*Production rates may vary depending on machine speed, fill material viscosity, and operator experience.

## CPT Softgel Tooling For Vgel or Standard Gelatin

The die rolls feature timing marks and harder aircraft grade aluminum construction. They are "bead blasted" to minimize gel adhesion.



### COMPLETE SET INCLUDES:

- 2 die rolls with stainless steel inserts
- Teflon® coated aluminum wedge
- Solid Teflon® distribution plate
- Timing gear
- Industrial, compact storage case



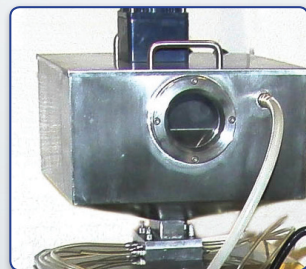
### SPECIFICATIONS

<b>Type</b>	4" "Dual"
<b>Speed</b>	Rated up to 5 RPM
<b>Volume</b>	Rated up to 28,000 per hour (Animal Gelatin)
<b>Die Rolls</b>	4"
<b>Dimension</b>	1050mm (H) x 650mm (D) x 1800mm (W)
<b>Weight</b>	500kg
<b>Power</b>	220V, 3Ph, 60Hz, Max 3kW req
<b>Tumble Dryers</b>	2 or 4 Baskets

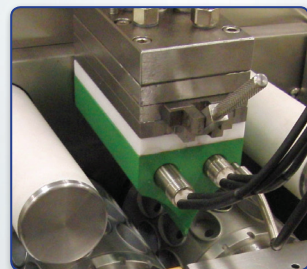
### PRODUCTION ESTIMATES

**Production Estimate Output Per Hour\* (@4 RPM)**

Size/Shape	Cavities	Animal Gelatin	Tapioca Starch
#6 Round	119	28,560	20,000
#40 Round	60	7,200 (@ 2 RPM)	5,000
#5 Oval	105	25,200	17,600
#10 Oval	72	17,280	12,000
#11 Oblong	60	14,400	10,000
#20 Oblong	54	12,960	9,000
#24 Oblong	51	12,240	8,500



Hopper



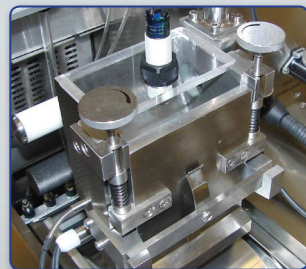
Injection wedge



Lubrication roller



Die roll set



Spreader box



Color touch screen