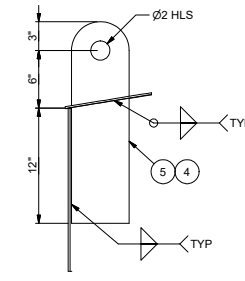
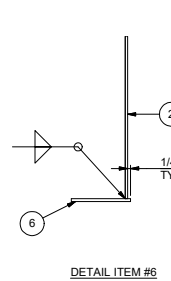
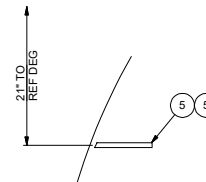
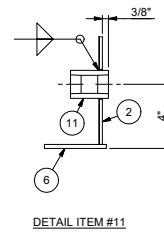
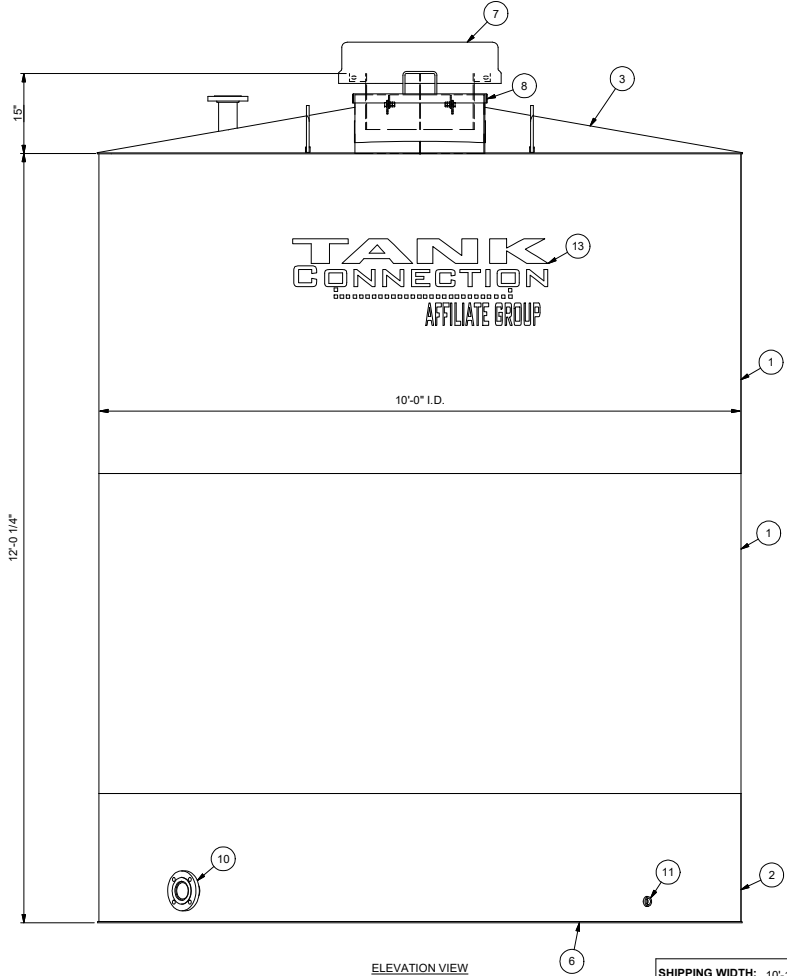
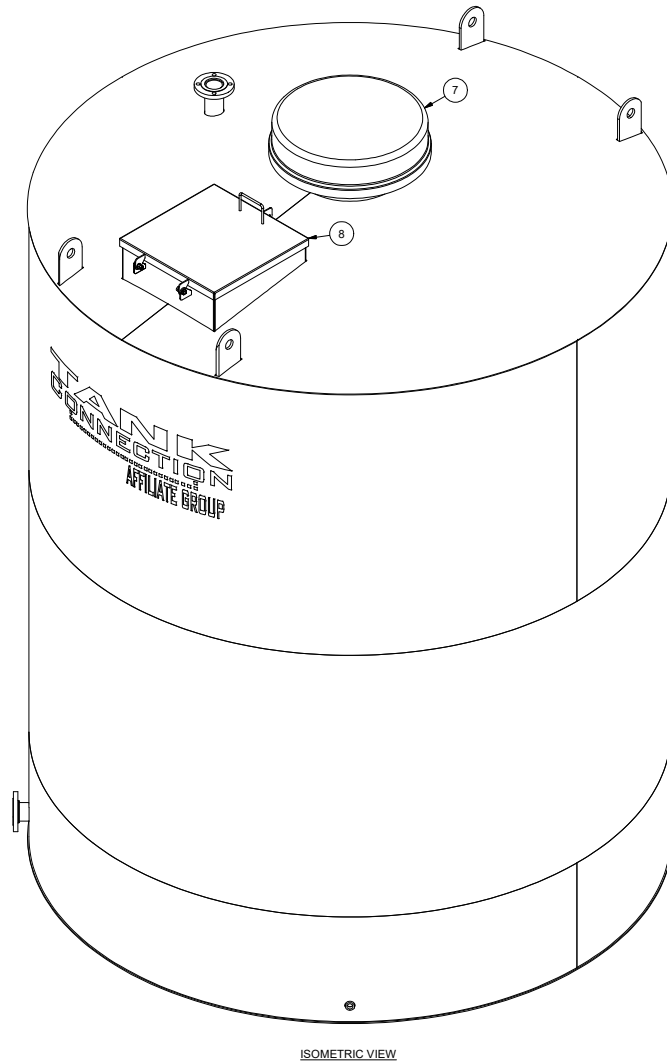
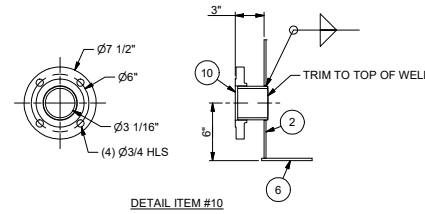
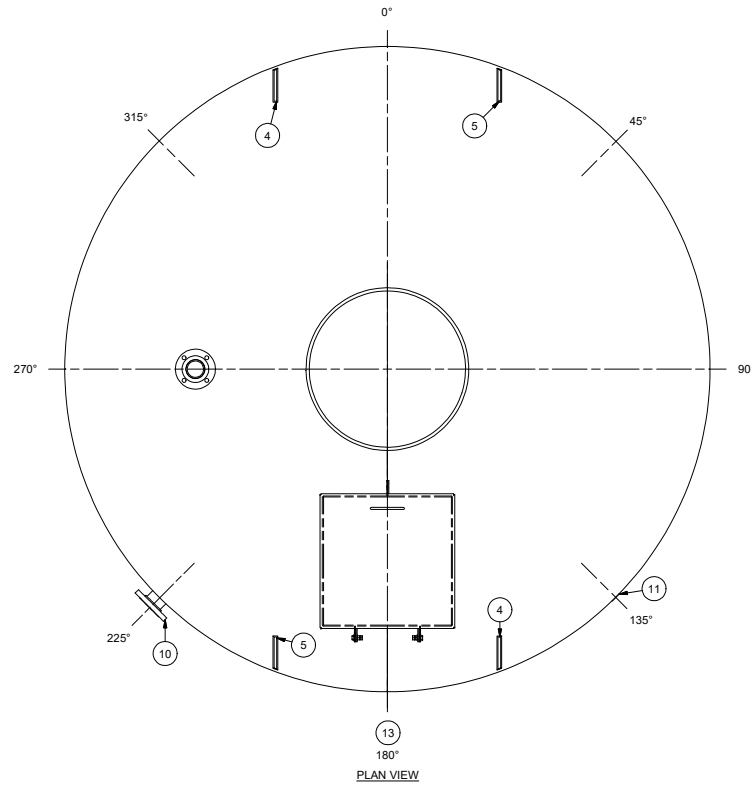


ITEM	ITEM DESCRIPTION	DEGREE	ELEV. FROM EAVE TO C/L OF ITEM	ELEV. FROM B.O.T. TO C/L OF ITEM	ARC ON SHELL O.D.	ARC TYP. BOTH SIDES OF C/L
4/5	LIFTING LUGS	45/225	--	--	47 1/4"	--
7	20" ALUM MANWAY VENT ASSY	CTR	CTR	--	--	--
8	24" MNWY HDWR & COVER KIT	180	36	--	--	--
9	NAMEPLATE	180	--	5'-0"	--	--
10	3" 150# R.F.S.O. NOZZLE	225	--	6"	47 1/4"	--
11	COUPLING FULL 1" 3000# SS A304	135	--	4"	47 1/4"	--
13	TC LOGO	180	--	2'-0"	--	--

ITEM	D/S	PART NUMBER	QTY	DESCRIPTION	MAT'L GR.	EST. WT.	PAINT	CODE
1	-	RNG13163001	2	RING, 3/16" PL X 60" X 377.570 in LG	A304	1228	-	-
2	-	RNG23163001	1	RING, 3/16" PL X 24" X 377.570 in LG	A304	491	-	-
3	B	DKA3163001	1	DECK ASSEMBLY	A304	693	-	R
4	B	LLS50621A304	2	LH LIFTING LUG 1/2" X 6" X 21"	A304	17	-	-
5	B	LRS50621A304	2	RH LIFTING LUG 1/2" X 6" X 21"	A304	17	-	-
6	-	3163001001	1	1/4" PL TANK FLOOR X 10'-0 7/8" O.D.	A304	829	-	-
7	B	VAV20IC	1	20" ALUM MANWAY VENT ASSY	ALUM	28	-	M/R
8	B	WSSMW24KITA304	1	24" MNWY HDWR & COVER KIT	-	45	-	P/R
9	B	NP3163001	1	NOTES AND NAMEPLATE	-	0	-	M/R
10	B	FNSRF03A304	1	3" 150# R.F.S.O. NOZZLE	-	13	-	-
11	-	CPLGF100A304	1	COUPLING FULL 1" 3000# SS A304	A304	1	-	-
12	-	-	-	-	-	0	-	-
13	-	TCLOGO	1	TC LOGO	Default	0	-	P

REQUIRE TEST
D100 TC STD DYE PEN TEST



SHIPPING WIDTH:	SHIPPING HT:	SHIPPING LG:	SHIPPING WT:	MANIFEST WT:	TOTAL WT:	PARENT:	TOLERANCES UNLESS OTHERWISE NOTED	ANGULAR DEVIATION	PERMISSIBLE DEVIATION	NOMINAL LENGTH IN INCHES	0 - 4"	4" - 48"	48" - 130"	130" - 240"	240" +
10'-1"	10'-1"	13'-3"	4,800#	200#	5,000#	***DO NOT SCALE*** DRAWING IN INCHES ANSI/ASME Y14.1 STANDARDS	ANGULAR DEVIATION $X = \pm 1.0^\circ / X, X = \pm 0.5^\circ$	PERMISSIBLE DEVIATION	NOMINAL LENGTH IN INCHES	0 - 4"	4" - 48"	48" - 130"	130" - 240"	240" +	
						3RD ANGLE PROJECTION	LINEAR TOLERANCE	1/32"	1/32"	1/32"	1/32"	1/16"	1/16"	3/16"	
						HOLE TO HOLE TOLERANCE	1/32"	1/32"	1/32"	1/16"	1/16"	1/16"	1/16"	3/16"	

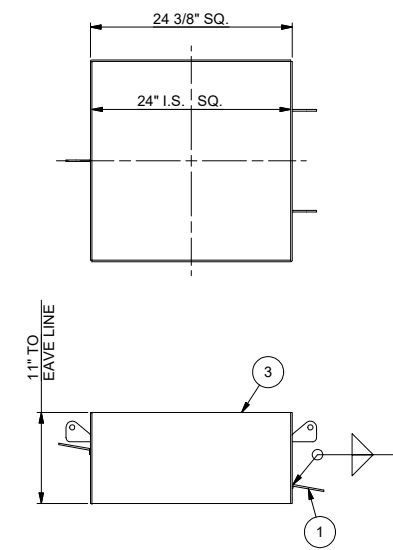
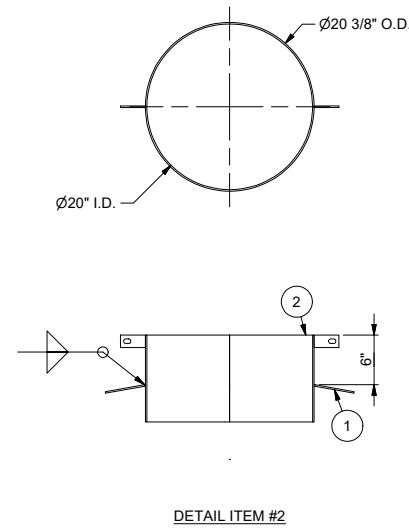
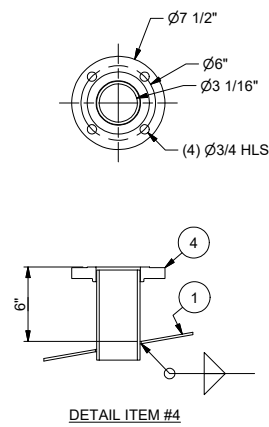
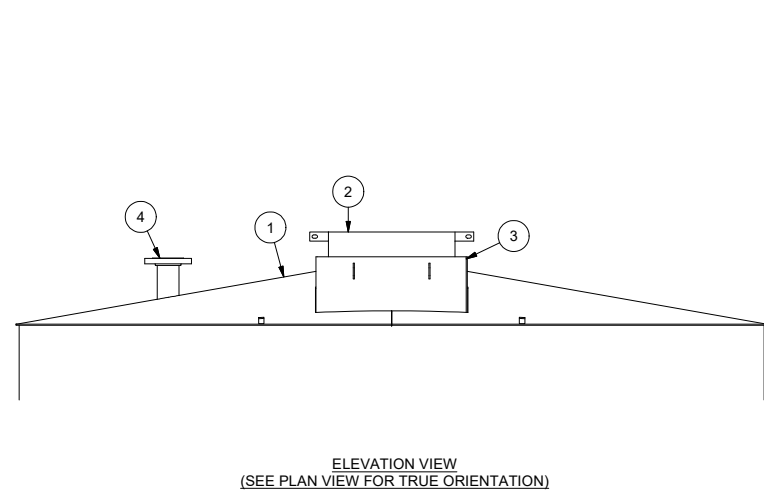
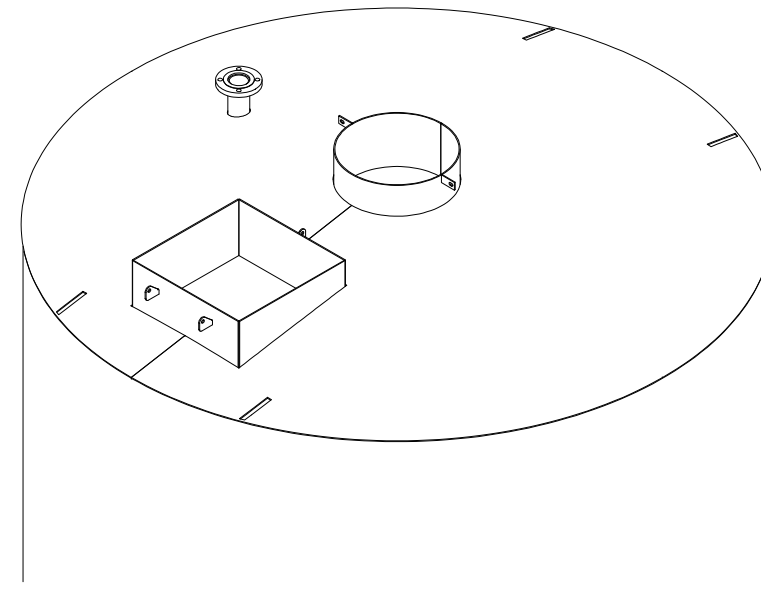
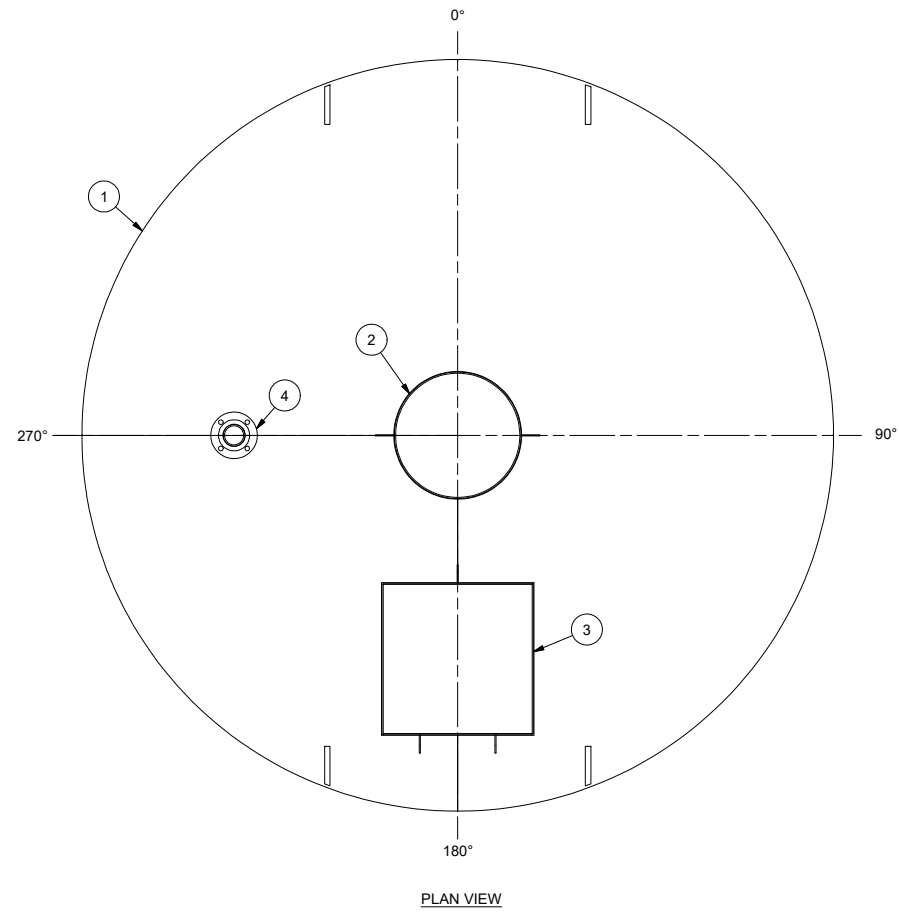
REV	REVISION DESCRIPTION	DATE	DRAWN BY	CHECKED BY
4	CHNG PAINT CODE	12/20/13	GLS	JC
3	REMOVED ITEM #12	12/4/13	LAS	JC
2	REVISED LIFTING LUGS	10-2-13	LG	JC
1	REL'D FOR FAB	11/27/13	JC	LG
0	FOR APPROVAL	10-15-13	LG	JC

CUSTOMER NAME:	DUFFEY SOUTHEAST INC.
PROJECT NAME:	RESIN TANK
PROJECT LOCATION:	ATLANTA, GA

CERTIFIED: APPROVED FOR CONSTRUCTION	PROJ #	3163	JOB #	001
MAIN ASSEMBLY	DWG #	WSL0100123163001		
10'-0" L.D. X 12'-0 1/4"	SCALE:	NTS		

ITEM	ITEM DESCRIPTION	DEGREE	SLOPE DIM FROM EDGE OF DECK	RADIUS	ARC ON DECK O.D.	PROJ. FROM EAVE LINE
2	20" MANWAY VENT NECK ASSY	CTR	--	CTR	--	15"
3	24" SQ. MNWY NECK ASSY SS	180	24 7/8"	36"	--	11"
4	3" 150# R.F.S.O. NOZZLE	270	24 7/8"	36"	--	10 3/4"

ITEM	D/S	PART NUMBER	QTY	DESCRIPTION	MAT'L. GR.	EST. WT.	PAINT
1	B	DK3163001	1	DECK CNC, 3/16" PL 10 DEG	A304 HRAP	585	-
2	B	VWN20A304	1	20" MANWAY VENT NECK ASSY	A304	37	-
3	B	WSSMWN24A304	1	24" SQ. MNWY NECK ASSY SS	A304	58	-
4	B	FNSRF03A304	1	3" 150# R.F.S.O. NOZZLE		13	-



TOTAL WT: 693 lbmass		PARENT:	
DO NOT SCALE			
DRAWING IN INCHES			
ANSI/ASME Y14.1 STANDARDS			
3RD ANGLE PROJECTION			
ANGULAR DEVIATION		TOLERANCES UNLESS OTHERWISE NOTED	
$X = \pm 1.0^\circ / X.X = \pm 0.5^\circ$		PERMISSIBLE DEVIATION NOMINAL LENGTH IN INCHES	
0 - 4" 4" - 48" 48" - 130" 130" - 240" 240" +		0 - 4" 1/16" 1/16" 5/32" 1/8" 3/16"	
LINEAR TOLERANCE:		1/32" 1/32" 1/32" 1/16" 1/16"	
HOLE TO HOLE TOLERANCE:		1/32" 1/32" 1/32" 1/16" 1/16"	

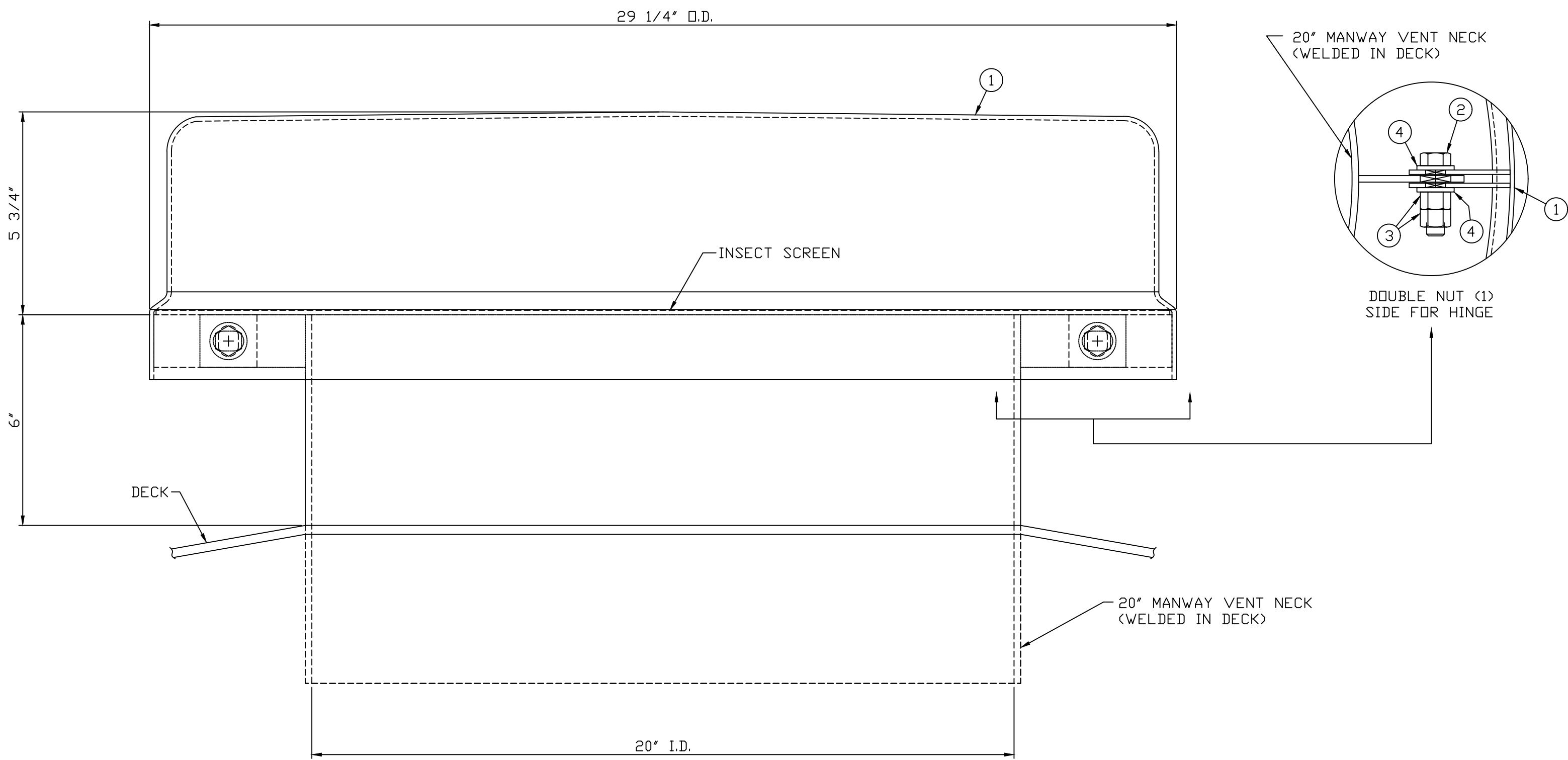
THE INFORMATION ON THIS DOCUMENT IS CONFIDENTIAL PROPERTY OF TANK CONNECTION AND/OR ITS AFFILIATES. ANY OTHER USE, RETENTION, DISSEMINATION, FORWARDING, PRINTING OR COPYING OF THIS DOCUMENT TO UNAUTHORIZED PARTIES IS STRICTLY PROHIBITED WITHOUT THE EXPRESSED WRITTEN CONSENT OF TANK CONNECTION.



REV	REVISION DESCRIPTION	DATE	DRAWN BY	CHECKED BY
4				
3				
2	REVISED LIFTING LUG CUTOUTS	12-2-13	LG	JC
1	RELD FOR FAB	11/27/13	JC	LG
0	APPROVAL	10/14/2013	JP	

CERTIFIED: APPROVED FOR CONSTRUCTION			
DECK ASSEMBLY 10 DEG.			
PROJ #	3163	JOB #	001
DWG #	DKA3163001		
DWG SIZE: C	SCALE: NTS		

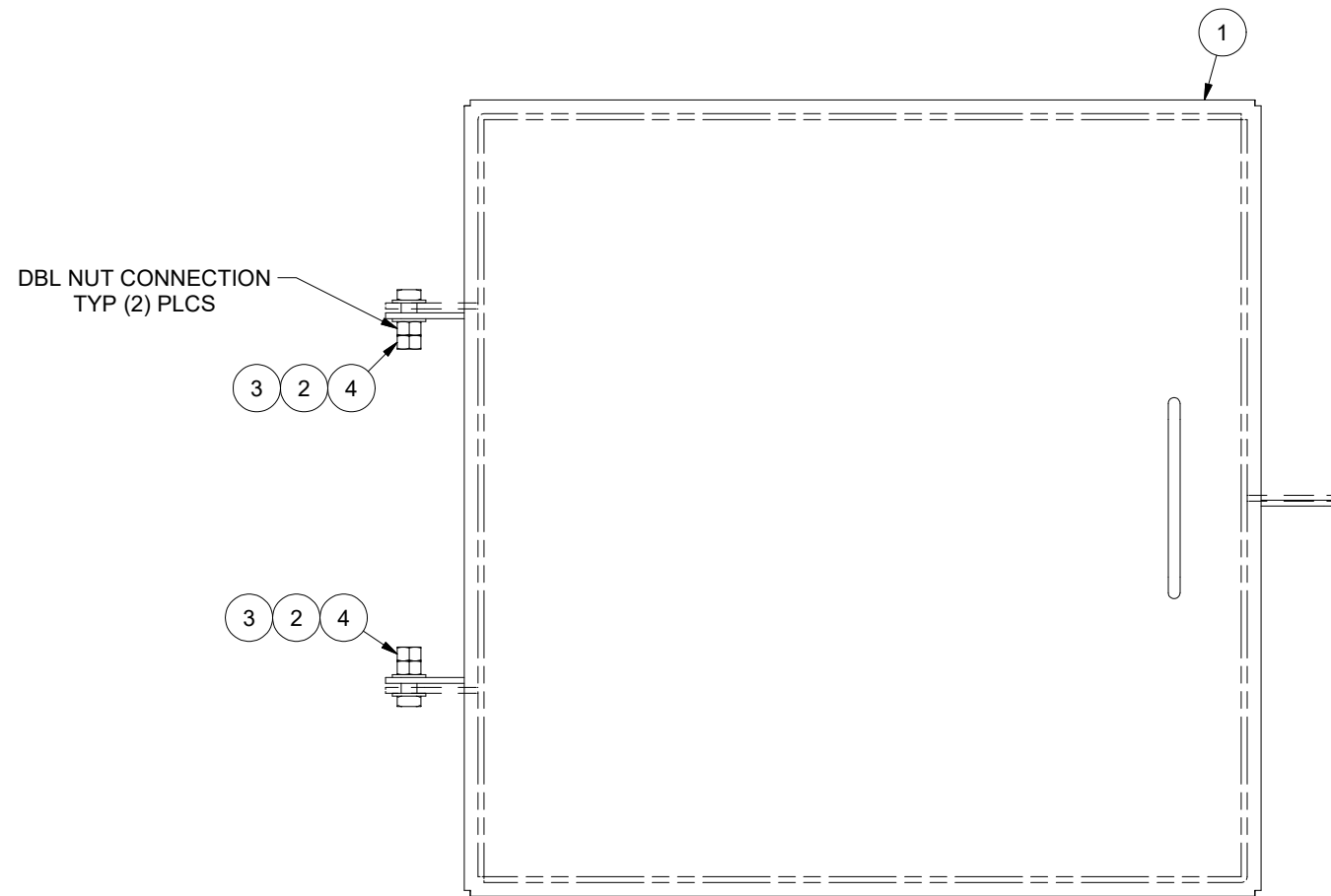
ITEM	D/S	PART NO.	QTY.	DESCRIPTION	GRD.	WT.
1	B	VCA20I	1	20" ALUMINUM MANWAY VENT CAP	ALUM	24
2	-	BLTHG05002000	2	BOLT 1/2" X 2" LG. HEX HD. HDG	GRD5	
3	-	NUTHG0500	3	NUT HEX 1/2" HDG	GRD5	
4	-	WSHFG0500	4	WASHER FLAT 1/2" HDG	SAE	



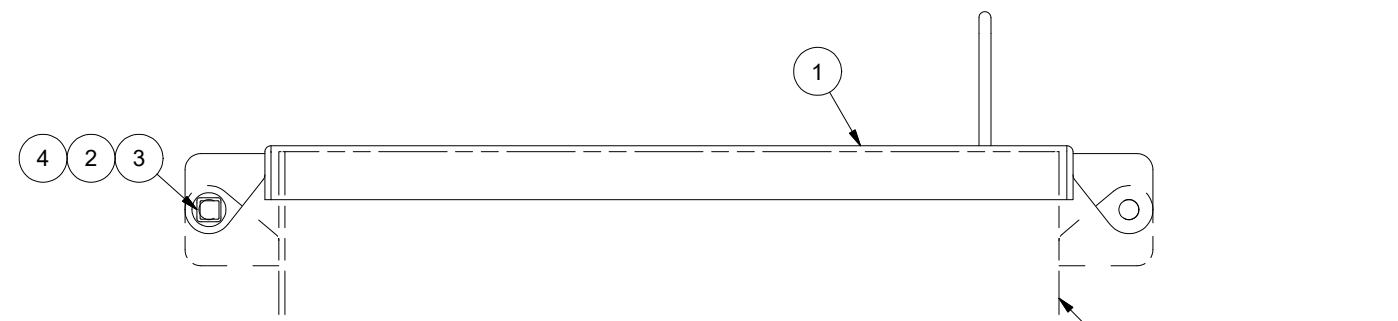
ASSY WT: 24#

THE INFORMATION ON THIS DOCUMENT IS CONFIDENTIAL. ANY OTHER USE, RETENTION, DISSEMINATION, FORWARDING, PRINTING OR COPYING OF THIS DOCUMENT TO UNAUTHORIZED PARTIES IS STRICTLY PROHIBITED.	C				DRAWN BY:	AM	20" ALUM. MANWAY VENT ASSY W/INSECT SCREEN		
	B				DATE:	08/30/06			
	A				REVIEWED BY:	KS			
	REV	BY	DATE	DESCRIPTION	DATE:	08/31/06		B	SCALE: NTS

ITEM	D/S	PART NUMBER	QTY	DESCRIPTION	MAT'L. GR.	EST. WT.	PAINT
1	B	WSSMWC24A304	1	24" SQ. MANWAY COVER ASSY		44	-
2	-	WSHFJS10500	4	WASHER FLAT 1/2" JS1000	F436	0	-
3	-	BLTSQJS105001500	2	BOLT SQ HD 1/2" X 1 1/2" JS1000	GR 8	0	-
4	-	NUTHJS10500	4	NUT HX 1/2" JS1000	GR 5	0	-



TOP ASSY. VIEW



FRONT ASSY. VIEW

24" MANWAY NECK
WELDED IN TANK DECK

TOTAL WT: 45 lbmass		PARENT:				THE INFORMATION ON THIS DOCUMENT IS CONFIDENTIAL PROPERTY OF TANK MANUFACTURER AND/OR ITS AFFILIATES. ANY OTHER USE, RETENTION, DISSEMINATION, FORWARDING, PRINTING OR COPYING OF THIS DOCUMENT TO UNAUTHORIZED PARTIES IS STRICTLY PROHIBITED, WITHOUT THE EXPRESSED WRITTEN CONSENT OF TANK MANUFACTURER.				CERTIFIED: APPROVED FOR CONSTRUCTION															
DO NOT SCALE DRAWING IN INCHES ANSI/ASME Y14.1 STANDARDS		TOLERANCES UNLESS OTHERWISE NOTED						24" MNWY HDWR & COVER KIT				PROJ # 3163		JOB # 001											
3RD ANGLE PROJECTION		ANGULAR DEVIATION		PERMISSIBLE DEVIATION NOMINAL LENGTH IN INCHES		X = ±1.0° / X.X = ±0.5°		0 - 4"		4" - 48"		48" - 130"		130" - 240"		240"+		DWG # WSSMW24KITA304							
		LINEAR TOLERANCE:		1/32"		1/16"		5/32"		1/8"		3/16"		HOLE TO HOLE TOLERANCE:		1/32"		1/32"		1/32"		1/16"		1/16"	
		REV		REVISION DESCRIPTION		DATE		DRAWN BY		CHECKED BY		DWG SIZE: B		SCALE: NTS											
		4																							
		3																							
		2																							
		1		REV'D QTY'S		12/20/13		GLS		JC															
		0		REL'D FOR CONSTRUCTION		11/27/13		JC		LS															



