

# APS-134 Labeler

Automatic Horizontal Wrap Labeler

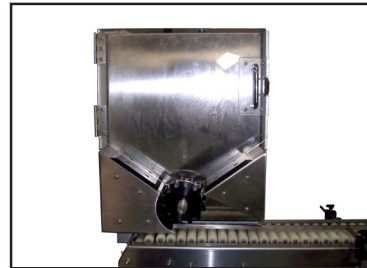


## Key Features:

- Auto Label Learn™
- Label Head Dispenses up to 3" (7.5 cm) Tall Labels
- In Line Automatic Applications or Semi Automatic Use
- Angle roller conveyor
- Touch Screen Control System with Job Memory
- Heavy Duty Construction for 3 Shift Operations
- Sanitary Stainless Steel Frame
- Easy Adjusting Hand Wheels for Quick Setup
- Fully Synchronized Conveyor and Label Head

## Options:

- Bulk loading magazine (Custom to container)
- Hot Stamp Date/Lot Coder
- Alpha Numeric Starter Kit
- Pneumatic Separator
- Clear Label Sensor
- Casters



**Labelette**  
Labelers®

2980 Scott St, Vista CA 92081 • 760.734.4177 • Fax 760.734.4188  
Email: [Sales@AccutekPackaging.com](mailto:Sales@AccutekPackaging.com) • [AccutekPackaging.com](http://AccutekPackaging.com)

**ACCUTEK**  
Packaging Equipment Companies, Inc.

# APS-134 Labeler

## Automatic Horizontal Wrap Labeler

**Labelette's APS-134** is an easy to operate Automatic Horizontal Wrap Labeler. The **APS-134** is designed to label unwieldy, non-freestanding, round containers horizontally oriented with a full or partial wrap label such as pens, lip sticks, test tubes/ampules and other cylindrical containers. It features a 4 ft. long variable speed drive conveyor with adapted live puck system perfect for small cylindrical vials or tube containers. The label head is full synchronized with the conveyor and can dispense labels up to 3" (7cm) tall. The speed, versatility, and reliability of the **APS-134** exceed industry leaders in labeling equipment technology at a fraction of the price.



### Dimensions:

Height: 48-60" (122-152.4 cm)  
 Length: 48" (122 cm)  
 Depth: 40" (101.6 cm)

### Weight:

Approx. ~350 lbs. (158 kg)

### Labeling Speed:

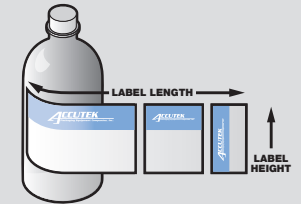
Up to 200 CPM\*

### Electrical:

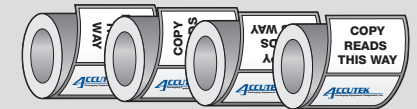
110 VAC - 10APMS, 56/60 Hz  
 (220VAC Optional)

### Label Size:

Length: 0.5"-11" (1.25-28 cm)  
 Height: 0.5" - 3" (1.9-7 cm)



### Label Dimensions



### Label Direction is Job Specific

(Always Outside Peel)

*Labelette*  
 Labelers®

**ACCUTEK**  
 Packaging Equipment Companies, Inc.

### Feature Comparison Chart

	<b>Labelette</b>	Competitors
• All motors are automatically synchronized for consistent efficient labeling .....	<b>YES</b>	<b>NO</b>
• No repositioning of label sensor is required for various label lengths .....	<b>YES</b>	<b>NO</b>
• Label Learn™ measures the label and adjusts the sensor accordingly .....	<b>YES</b>	<b>NO</b>
• One touch HMI Touch screen adjustment to change labeling speed .....	<b>YES</b>	<b>NO</b>
• Up to 30 job memories .....	<b>YES</b>	<b>NO</b>
• Touch screen with help menu's and trouble shooting guide .....	<b>YES</b>	<b>NO</b>
• LabelLearn™ ensures labels won't run out with a programmable label counter (for precise run of a set number of labels) to auto-stop .....	<b>YES</b>	<b>NO</b>
• Total bottles labeled counter .....	<b>YES</b>	<b>NO</b>
• LabelLearn™ can automatically stop labeling when a label is missing from the label roll .....	<b>YES</b>	<b>NO</b>
• Manufactured with major worldwide components including Panasonic, AllenBradly and Parker Hannifin. Unlike the proprietary over priced Components of our competition .....	<b>YES</b>	<b>NO</b>
• Accutek stocks over 27,000 different parts in over 40,000 sq ft of automated warehouse dedicated to ensuring next day in stock part delivery for over 20,000 customer machines currently in use .....	<b>YES</b>	<b>NO</b>
• Accutek machinery is designed in the USA and over 80% of Accutek's Product are manufactured in the USA by an American Company .....	<b>YES</b>	<b>NO</b>