



EVOLVE

DECORATIVE WIRING ACCESSORIES

Technical Data Cooker Control Unit

Brief product description:

BG's Evolve range of wiring accessories is available in a variety of colours and finishes to give you greater choice and flexibility when choosing electrical accessories to complement your decor.

The modern screwless front plate is simple to clip on and off, so you can install or leave the base in place when decorating and clip the colour plate in place once the job is complete.

Features:

- Easy to install, supplied with fixing screws and installation instructions
- LED Indicator - flush fit, reliable, low power
- Colour coded terminals for easy identification
- Captive backed out terminal screws prevent screw loss
- Screwless front plate clips on and off easily, ideal for redecorating
- Double pole for peace of mind and safer installation
- Twin earth for high integrity circuits

Product Images



PCDCL70W



PCDMG70B



PCDDB70B



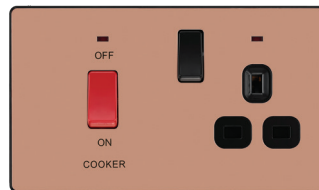
PCDSB70B



PCDBS70W



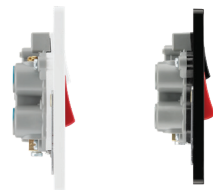
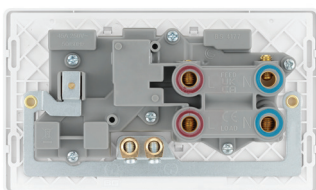
PCDMB70B



PCDCP70B



PCDBC70B



Colour Reference:

CL = Pearlescent White; MG = Matt Grey; DB = Matt Blue; SB = Satin Brass

BS = Brushed Steel; MB = Matt Black; CP = Polished Copper; BC = Black Chrome

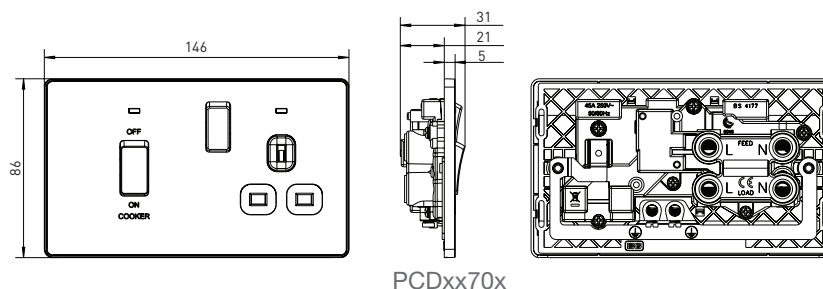
Cooker Control Unit

Technical Specifications

Standard(s)	BS 4177
Rating	45 Amp
Voltage	250V AC
Switch Type	Double Pole
Terminal Capacity	4 x 4.0mm ² 3 x 6.0mm ² & 1 x 16.0mm ²
RoHS Directive	Yes
WEEE Directive	Yes
Mounting Box Depth (Min)	47mm



Line Diagrams



PCDxx70x

Packaging Information

Cat No.	Description	Packaging Type			Pack Quantity			Barcode		
		Product	Inner Box	Outer Box	Each	Inner Box	Outer Box	Individual	Inner Box	Outer Box
PCDCL70W	CCU + 13A Skt - CL	Eco Blister	Colour Box	Carton	1	5	50	5050765192958	5050765193306	5050765193658
PCDBS70W	CCU + 13A Skt - BS	Eco Blister	Colour Box	Carton	1	5	50	5050765187794	5050765188111	5050765188432
PCDMG70B	CCU + 13A Skt - MG	Eco Blister	Colour Box	Carton	1	5	50	5050765184731	5050765185080	5050765185431
PCDMB70B	CCU + 13A Skt - MB	Eco Blister	Colour Box	Carton	1	5	50	5050765183680	5050765184038	5050765184380
PCDDB70B	CCU + 13A Skt - DB	Colour Box	Colour Box	Carton	1	/	/	5050765225069	/	/
PCDCP70B	CCU + 13A Skt - CP	Colour Box	Colour Box	Carton	1	/	/	5050765225991	/	/
PCDSB70B	CCU + 13A Skt - SB	Colour Box	Colour Box	Carton	1	/	/	5050765190855	/	/
PCDBC70B	CCU + 13A Skt - BC	Colour Box	Colour Box	Carton	1	/	/	5050765188753	/	/

Colour Reference:

CL = Pearlescent White; MG = Matt Grey; DB = Matt Blue; SB = Satin Brass

BS = Brushed Steel; MB = Matt Black; CP = Polished Copper; BC = Black Chrome

Weights & Dimensions

Cat No.	Description	Dimensions (H x W x D) cm				Weight (kg)				CBM (m ³)
		Unpacked Product	Packed Product	Inner Box	Outer Box	Unpacked Product	Packed Product	Inner Box	Outer Box	Outer Box
PCDxx70x	CCU + 13A Skt (EB)	8.6 x 14.6 x 3.1	15.3 x 17.8 x 3.5	18.8 x 10.9 x 20.5	22.6 x 38.8 x 56.8	0.205	0.231	1.23	12.81	0.04981
PCDxx70x	CCU + 13A Skt (CB)	8.6 x 14.6 x 3.1	8.7 x 15.2 x 4.3	/	/	0.205	0.246	/	/	/

Packaging Format:

(CB) = Colour Box; (EB) = Eco Blister