



CorePro LED PLC 2P



CorePro LED PLC 4.5W 830 2P G24d-1

The CorePro LED PLC 2P integrates a LED light source into a traditional fluorescent form factor. This product is the ideal solution for uplamping in general lighting applications: it meets basic lighting requirements, offers significant energy savings and is environmentally friendly.

Product data

General Information	
Cap base	G24d-1
Nominal lifetime	30,000 h
Switching Cycle	50,000
Lighting Technology	LED
Flux measurement reference	Sphere
Light Technical	
Colour Code	830 [CCT of 3000K]
Beam angle (nom.)	120 degree(s)
Luminous Flux	475 lm
Luminous efficacy (rated) (nom.)	105.00 lm/W
Colour designation	White (WH)
Correlated Colour Temperature	3000 K
Colour consistency	<6
Colour rendering index (CRI)	83
LLMF at end of nominal lifetime (nom.)	70 %
Photobiological safety according to EN 62471	RG0
Operating and Electrical	
Line Frequency	50 to 60 Hz
Input frequency	50 to 60 Hz
Power Consumption	4.5 W

Lamp current (max.)	25 mA
Lamp current (min.)	20 mA
Starting time (nom.)	0.5 s
Warm-up time to 60% light	0.5 s
Power Factor (Fraction)	0.9
Voltage (nom.)	220-240 V
LED alternative to fluorescent lamp power	13 W
Inrush current at mains	2.5
Max. lamp no. on MCB B type 10A – Mains	191
Max. lamp no. on MCB B type 10A – EM ballast without Compensation Capacitor.	220
Max. lamp no. on MCB B type 10A – EM ballast with Compensation Capacitor.	30
Max. lamp no. on MCB B type 16A – Mains	306
Max. lamp no. on MCB B type 16A – EM ballast without Compensation Capacitor.	330
Max. lamp no. on MCB B type 16A – EM ballast with Compensation Capacitor.	49
Ballast Compatibility	EM

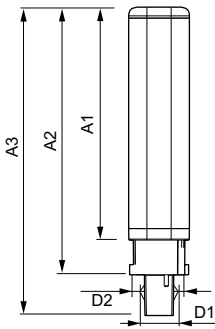
Temperature	
Ambient temperature range	-20°C to 35°C

CorePro LED PLC 2P

T-Case maximum (nom.)	60 °C
Controls and Dimming	
Dimmable	No
Mechanical and Housing	
Bulb material	Plastic
Product length	100 mm
Bulb shape	PL-C
Approval and Application	
Energy Efficiency Class	F
Energy-saving product	Yes
Approval marks	RoHS compliance
Energy consumption kWh/1,000 hours	5 kWh
EPREL registration number	403560
CE mark	Yes

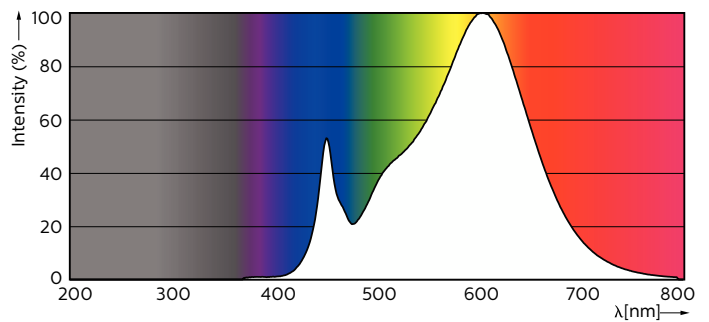
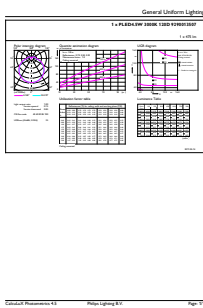
EU RoHS compliant	Yes
Product Data	
Order product name	CorePro LED PLC 4.5W 830 2P G24d-1
Full product name	CorePro LED PLC 4.5W 830 2P G24d-1
Full EOC	871869670659600
Order code	70659600
Material no. (12 NC)	929001350702
Numerator – quantity per pack	1
Net Weight (Piece)	0.070 kg
EAN/UPC – Product/Case	8718696706596
Numerator – packs per outer box	10
EAN/UPC – Case	8718696706602

Dimensional drawing



Product	D1	D2	A1	A2	A3
CorePro LED PLC 4.5W 830 2P G24d-1	24.3 mm	28.4 mm	95.8 mm	115 mm	137.6 mm

Photometric data

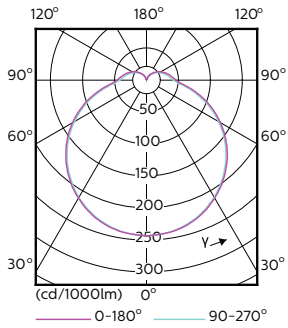


General uniform lighting - CorePro LED PLC 4.5W 830 2P G24d-1

Spectral Power Distribution Colour - CorePro LED PLC 4.5W 830 2P G24d-1

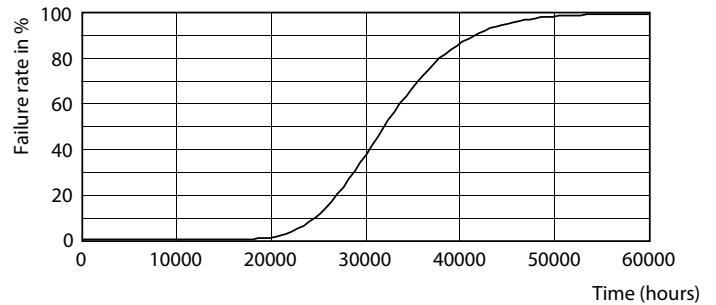
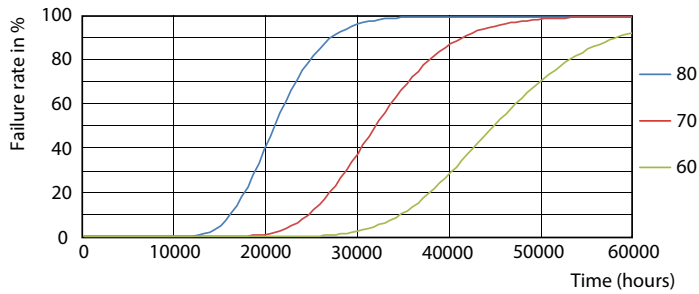
CorePro LED PLC 2P

Photometric data



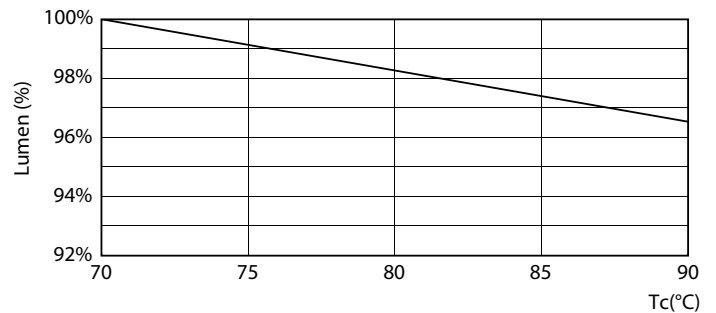
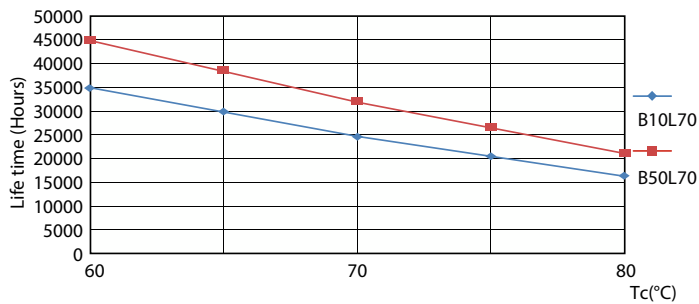
Light Distribution Diagram - CorePro LED PLC 4.5W 830 2P G24d-1

Lifetime



FailureRate

Life Expectancy Diagram

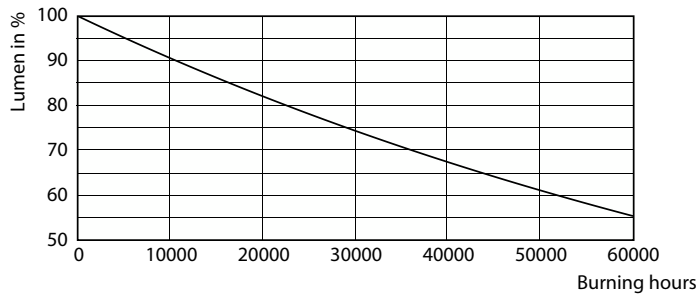


LifetimeVsTc

Lumen Maintenance Diagram - CorePro LED PLC 4.5W 830 2P G24d-1

CorePro LED PLC 2P

Lifetime



Lumen Maintenance Diagram - CorePro LED PLC 4.5W 830 2P G24d-1

