



# CorePro LED PLC 2P



## CorePro LED PLC 4.5W 840 2P G24d-1

CorePro LED PLC 2P integrates a LED light source into a traditional fluorescent form factor. This product is the ideal solution for uplamping in general lighting applications: it meets basic lighting requirements, offers significant energy savings, and is environmentally friendly.

### Product data

General Information	
Cap-Base	G24d-1
Nominal lifetime	30,000 hour(s)
Switching Cycle	50,000
Lighting Technology	LED
Flux measurement reference	Sphere
Light Technical	
Color Code	840 [CCT of 4000K]
Beam Angle (Nom)	120 degree(s)
Luminous Flux	500 lm
Luminous Efficacy (rated) (Nom)	111.00 lm/W
Color Designation	Cool White (CW)
Correlated Color Temperature (Nom)	4000 K
Color Consistency	<6
Color rendering index (CRI)	83
LLMF At End Of Nominal Lifetime (Nom)	70 %
Photobiological safety according to EN 62471	RG0
Operating and Electrical	
Line Frequency	50 to 60 Hz
Input Frequency	50 to 60 Hz
Power Consumption	4.5 W

Lamp Current (Max)	25 mA
Lamp Current (Min)	20 mA
Starting Time (Nom)	0.5 s
Warm-up time to 60% light	0.5 s
Power Factor (Fraction)	0.9
Voltage (Nom)	220-240 V
LED alternative to fluorescent lamp power	13 W
Inrush current at mains	2.5
Max. lamp no. on MCB B type 10A - Mains	191
Max. lamp no. on MCB B type 10A – EM ballast without Compensation Capacitor.	220
Max. lamp no. on MCB B type 10A – EM ballast with Compensation Capacitor.	30
Max. lamp no. on MCB B type 16A - Mains	306
Max. lamp no. on MCB B type 16A – EM ballast without Compensation Capacitor.	330
Max. lamp no. on MCB B type 16A – EM ballast with Compensation Capacitor.	49
Ballast Compatibility	EM

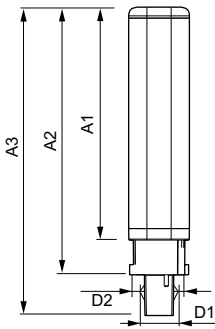
Temperature	
Ambient temperature range	-20 °C to 35 °C

# CorePro LED PLC 2P

T-Case Maximum (Nom)	60 °C
<b>Controls and Dimming</b>	
Dimmable	No
<b>Mechanical and Housing</b>	
Bulb Material	Plastic
Product Length	100 mm
Bulb Shape	PL-C
<b>Approval and Application</b>	
Energy Efficiency Class	F
Energy Saving Product	Yes
Approval Marks	RoHS compliance
Energy Consumption kWh/1000 h	5 kWh
EPREL Registration Number	403561
CE mark	Yes

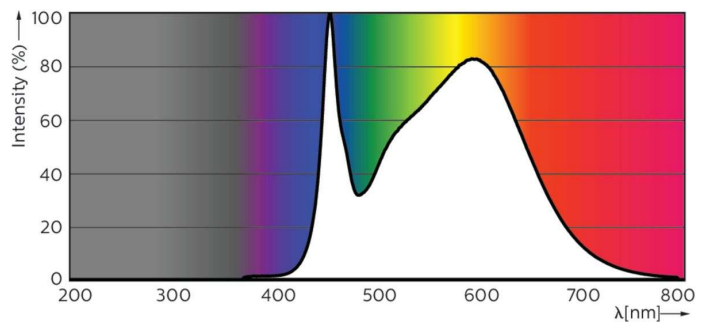
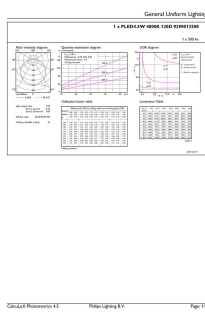
EU RoHS compliant	Yes
<b>Product Data</b>	
Order product name	CorePro LED PLC 4.5W 840 2P G24d-1
Full product name	CorePro LED PLC 4.5W 840 2P G24d-1
Full product code	871869670661900
Order code	929001350802
Material Nr. (12NC)	929001350802
Numerator - Quantity Per Pack	1
Net Weight (Piece)	0.070 kg
EAN/UPC - Product/Case	8718696706619
Numerator - Packs per outer box	10
EAN/UPC - Case	8718696706626

## Dimensional drawing



Product	D1	D2	A1	A2	A3
CorePro LED PLC 4.5W 840 2P G24d-1	24.3 mm	28.4 mm	95.8 mm	115 mm	137.6 mm

## Photometric data

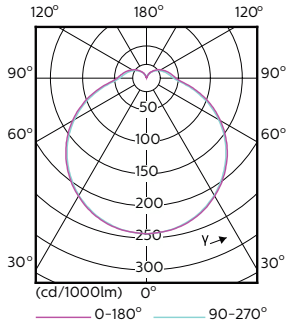


General uniform lighting - CorePro LED PLC 4.5W 840 2P G24d-1

Spectral Power Distribution Colour - CorePro LED PLC 4.5W 840 2P G24d-1

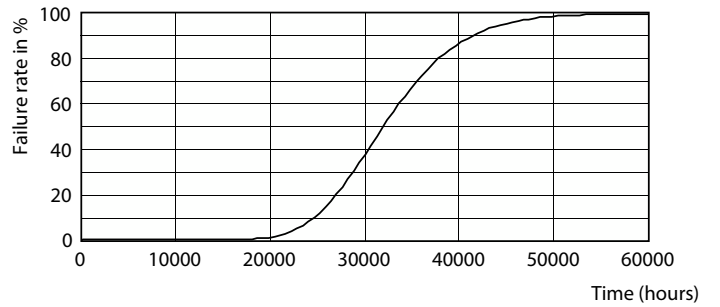
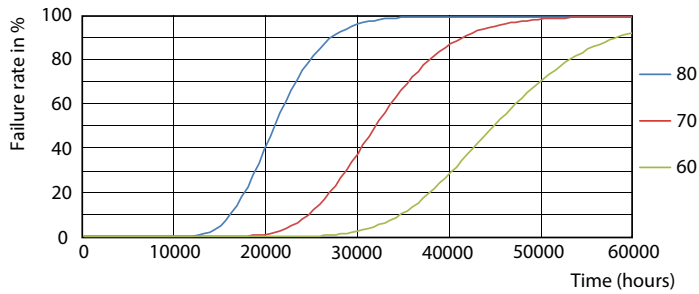
# CorePro LED PLC 2P

## Photometric data



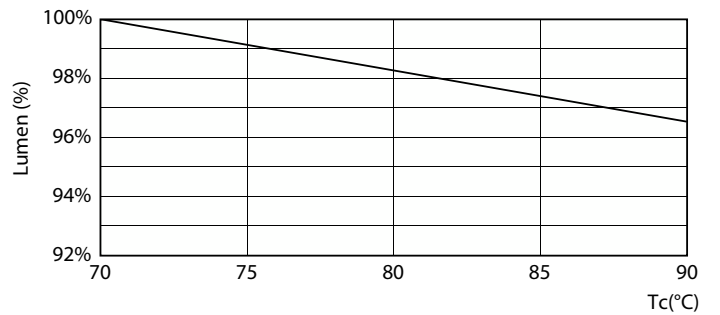
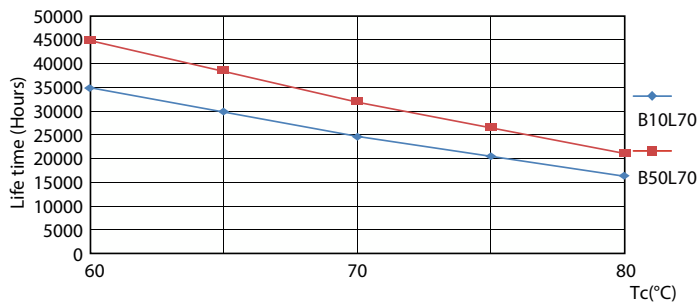
Light Distribution Diagram - CorePro LED PLC 4.5W 840 2P G24d-1

## Lifetime



FailureRate

Life Expectancy Diagram

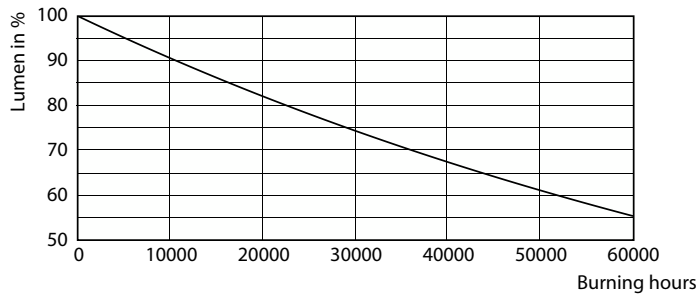


LifetimeVsTc

Lumen Maintenance Diagram - CorePro LED PLC 4.5W 840 2P G24d-1

# CorePro LED PLC 2P

## Lifetime



Lumen Maintenance Diagram - CorePro LED PLC 4.5W 840 2P G24d-1

