



# CorePro LED PLC 4P



## CorePro LED PLC 9.5W 840 4P G24q-3

The CorePro LED PLC 4P integrates a LED light source into a traditional fluorescent form factor. This product is the ideal solution for uplamping in general lighting applications: it meets basic lighting requirements, offers significant energy savings and is environmentally friendly.

### Product data

General Information	
Cap base	G24q-3 ROT
Nominal lifetime	30,000 h
Switching Cycle	200,000
Lighting Technology	LED
Flux measurement reference	Sphere
Light Technical	
Colour Code	840 [CCT of 4000K]
Beam angle (nom.)	120 degree(s)
Luminous Flux	1,100 lm
Colour designation	Cool White (CW)
Correlated Colour Temperature	4000 K
Luminous efficacy (rated) (nom.)	115 lm/W
Colour consistency	<6
Colour rendering index (CRI)	82
LLMF at end of nominal lifetime (nom.)	70 %
Operating and Electrical	
Input frequency	50 to 60 Hz
Power Consumption	9.5 W
Lamp current (nom.)	52 mA
Starting time (nom.)	0.5 s

Warm-up time to 60% light	0.5 s
Power Factor (Fraction)	0.9
Voltage (nom.)	220-240 V
LED alternative to fluorescent lamp power	26 W
Inrush current at mains	-
Max. lamp no. on MCB B type 10A – Mains	-
Max. lamp no. on MCB B type 10A – EM ballast without Compensation Capacitor.	-
Max. lamp no. on MCB B type 10A – EM ballast with Compensation Capacitor.	-
Max. lamp no. on MCB B type 16A – Mains	-
Max. lamp no. on MCB B type 16A – EM ballast without Compensation Capacitor.	-
Max. lamp no. on MCB B type 16A – EM ballast with Compensation Capacitor.	-
Ballast Compatibility	HF/Mains
Temperature	
T-Case maximum (nom.)	75 °C
Controls and Dimming	
Dimmable	No

# CorePro LED PLC 4P

## Mechanical and Housing

Lamp Finish	Frosted
Bulb material	Plastic
Product length	148 mm
Bulb shape	PL-C
Net Weight (Piece)	0.108 kg

## Approval and Application

Energy Efficiency Class	E
Energy-saving product	Yes
Approval marks	RoHS compliance
Energy consumption kWh/1,000 hours	10 kWh
EPREL Registration Number	1945440
CE mark	Yes
EU RoHS compliant	Yes
Ambient temperature range	-20 to +45 °C

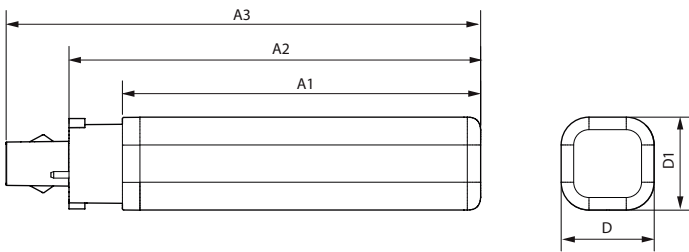
## Application Conditions

Can it be used in closed luminaires	Yes
-------------------------------------	-----

## Product Data

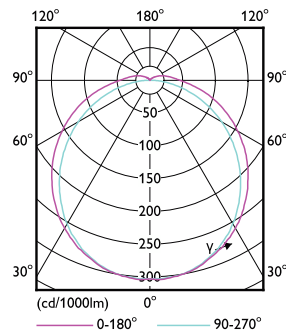
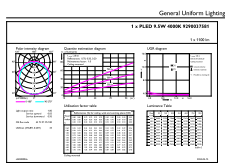
Order product name	CorePro LED PLC 9.5W 840 4P G24q-3
Full product name	CorePro LED PLC 9.5W 840 4P G24q-3
Full EOC	872016929051800
Order code	29051800
Material no. (12 NC)	929003758102
Numerator – quantity per pack	1
EAN/UPC – Product/Case	8720169290518
Numerator – packs per outer box	10
EAN/UPC – Case	8720169290525

## Dimensional drawing



Product	D1	D2	A1	A2	A3
CorePro LED PLC 9.5W 840 4P G24q-3	34 mm	34 mm	129 mm	148 mm	164 mm

## Photometric data

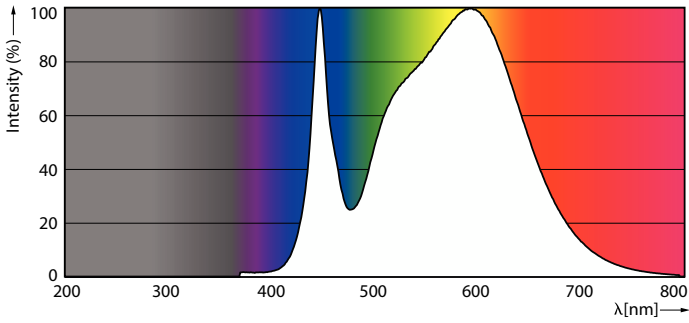


General uniform lighting - CorePro LED PLC 9.5W 840 4P G24q-3

Light Distribution Diagram - CorePro LED PLC 9.5W 840 4P G24q-3

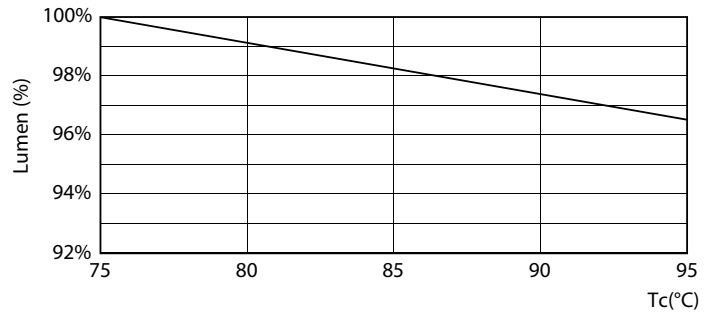
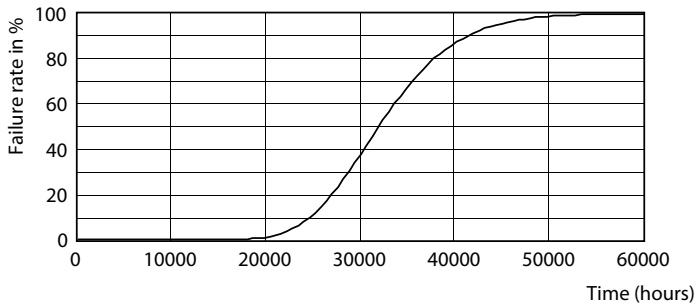
# CorePro LED PLC 4P

## Photometric data



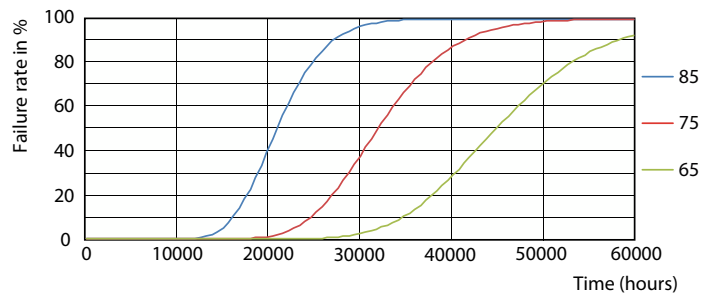
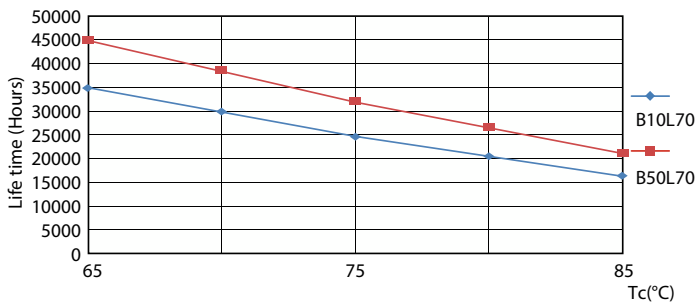
Spectral Power Distribution Colour - CorePro LED PLC 9.5W 840 4P G24q-3

## Lifetime



Life Expectancy Diagram

Lumen Maintenance Diagram - CorePro LED PLC 9.5W 840 4P G24q-3

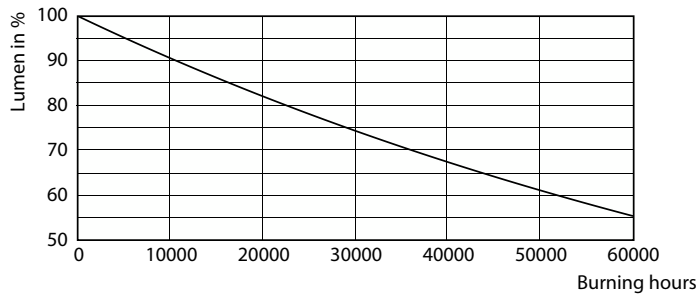


LifetimeVsTc

FailureRate

# CorePro LED PLC 4P

## Lifetime



Lumen Maintenance Diagram - CorePro LED PLC 9.5W 840 4P G24q-3

