



MASTER Ultra-efficient LED candles and lustres

MAS LEDCandleND2.3-40W E14 830B35 CLG UE

This is the most efficient LED candle from Philips brand. 210lm/W helps to concrete the company statement of sustainability. 50000 hour lifetime helps to extend the replacement cycle to reduce the waste. This is not only a high SPEC product, but also keeps the light quality of Philips brand

Product data

General information	
Cap base	E14 [E14]
EU RoHS compliant	Yes
Nominal lifetime (nom.)	50000 h
Switching cycle	50,000X
	Sphere

Light technical	
Colour Code	830 [CCT of 3,000 K]
Luminous flux (nom.)	485 lm
Colour designation	White (WH)
Correlated Colour Temperature (Nom)	3000 K
Luminous efficacy (rated) (nom.)	210 lm/W
Colour consistency	<6
Colour rendering index (nom.)	80
LLMF at end of nominal lifetime (nom.)	70 %

Operating and electrical	
Input frequency	50 to 60 Hz
Power (Rated) (Nom)	2.3 W
Lamp current (nom.)	30 mA
Wattage equivalent	40 W
Starting time (nom.)	0.5 s
Warm-up time to 60% light (nom.)	0.5 s
Power factor (nom.)	0.35
Voltage (Nom)	220-240 V

Temperature	
T-Case maximum (nom.)	70 °C

Controls and dimming	
Dimmable	No

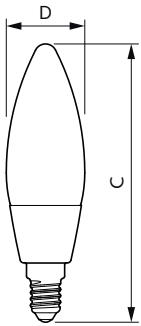
Mechanical and housing	
Lamp Finish	Clear

MASTER Ultra-efficient LED candles and lustres

Bulb shape	B35 [B 35mm]
Approval and application	
Energy Efficiency Class	A
Energy consumption kWh/1,000 hours	3 kWh
	1099138
Product data	
Full product code	871951443595700
Order product name	MAS LEDCandleND2.3-40W E14 830B35 CLG UE
	UE

EAN/UPC – product	8719514435957
Order code	43595700
SAP numerator – quantity per pack	1
Numerator – packs per outer box	10
SAP material	929003480802
Net Weight (Piece)	0.030 kg

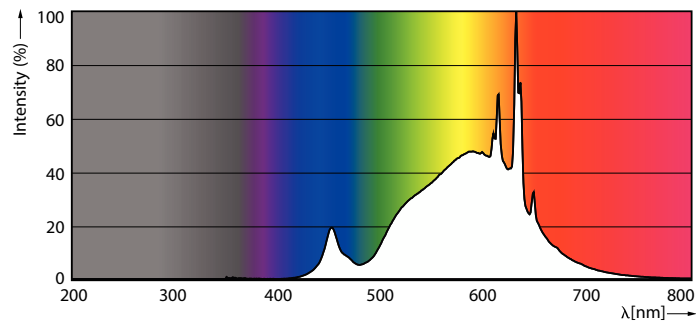
Dimensional drawing



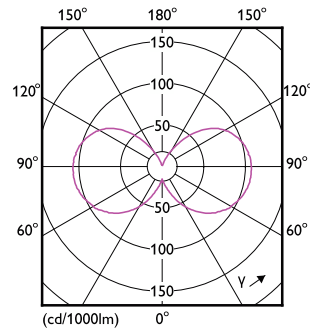
MAS LEDCandleND2.3-40W E14 830B35 CLG UE

Product	D	C
MAS LEDCandleND2.3-40W E14 830B35 CLG UE	35 mm	125 mm

Photometric data



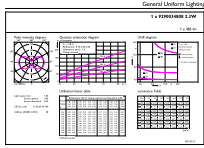
Spectral Power Distribution Colour



Light Distribution Diagram

MASTER Ultra-efficient LED candles and lustres

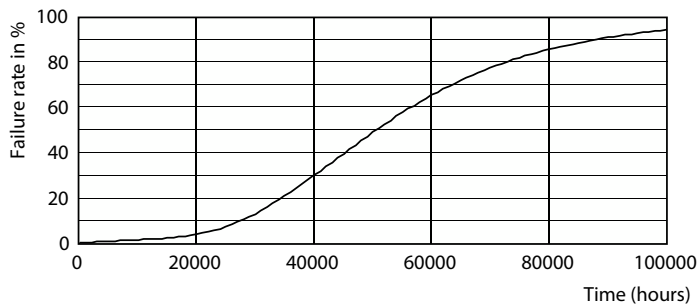
Photometric data



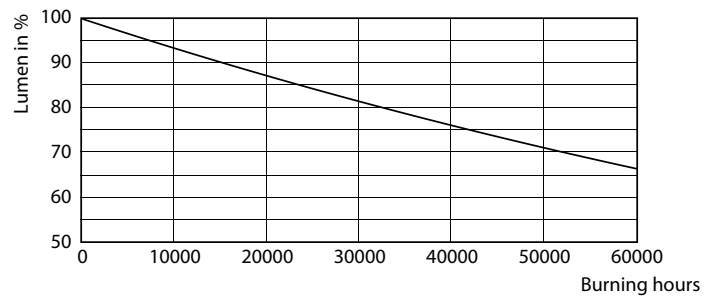
General Uniform Lighting
1 x 1000000 Lumen
1 x 2700K
Page 10

General uniform lighting

Lifetime



Life Expectancy Diagram



Lumen Maintenance Diagram

