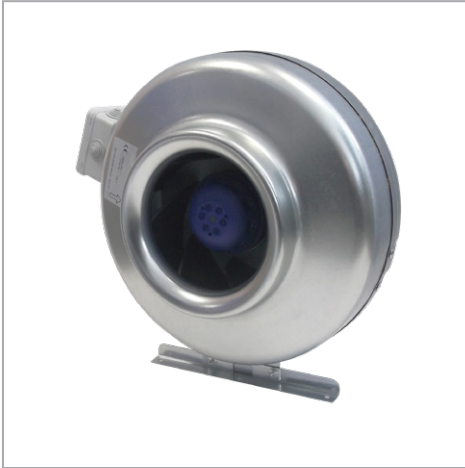


# MET In-line Centrifugal Fan Range

## Commercial Range

MET100/125/150/200/250/315



Designed for a wide range of commercial and industrial applications, offering high airflow performance in a choice of duct sizes.

Powerful and unobtrusive, the MET range have extract rates for many applications. Supplied with mounting feet for horizontal or vertical mounting.

A comprehensive range of ventilation accessories available to cover most ducted applications.

MET range incorporates a backward curved centrifugal impeller designed for large airflow against the resistance experienced in longer duct lengths. All models have 30mm long inlet and discharge spigots for easier duct work connection.

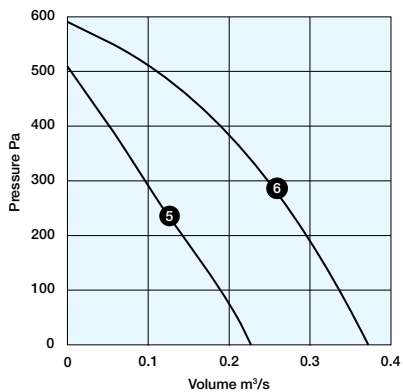
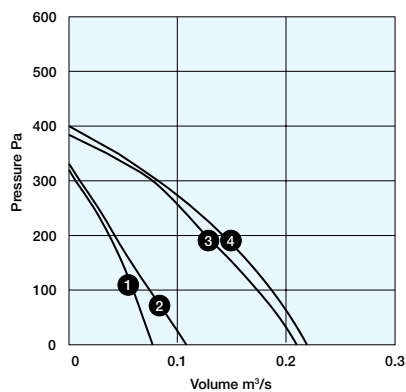
Designed for use with electronic speed control.



## Technical specifications

Model	Speed Rpm	Performance m <sup>3</sup> /hr	Power Watts	Sound dB(A) @ 3m
MET100	1990	277	42	47
MET125	1907	388	44	47
MET150	2409	759	62	51
MET200	2505	788	96	50
MET250	2505	817	94	53
MET315	2370	1339	205	61

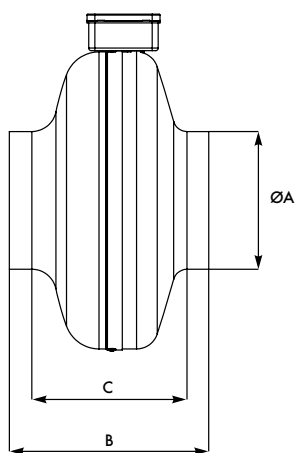
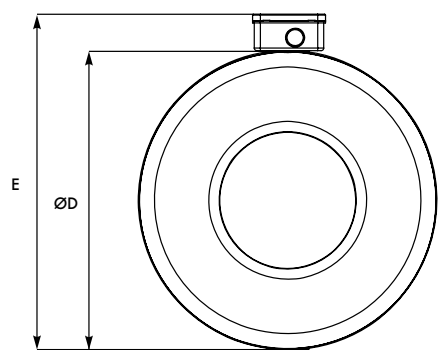
## Performance



Size	100	125	150	200	250	315
	1	2	3	4	5	6

## Dimensions

Product Size	ØA	B	C	ØD	E	kg
MET100	100	206	167	245	290	3
MET125	125	206	175	245	290	3
MET150	150	227	175	345	390	4
MET200	200	227	175	345	390	4.5
MET250	250	230	170	345	390	4.5
MET315	315	247	179	400	445	6.5



## Electrical

220-240V~50Hz AC single phase. All wiring must comply with current IEE regulations. A double pole isolating switch, having a contact separation of at least 3mm in all poles, must be used with a 3amp fuse fitted.

## Motor

Motors are single phase external rotor design with capacitor start to optimise efficiency. HOT SPOT protection protects the motor from damage due to overheating/overloading. Sealed for life bearings ensure maintenance free operation.

## Construction

Spun steel case featuring an aerodynamically designed airflow guide vane. 30mm inlet and discharge spigot for ease of installation.

## Installation

Induct fans suitable for in-line and designed for use with suspended ceiling systems.

## Installation

