

atlantic

Experts in Electric Heating and Hot Water

**GROUPE
ATLANTIC**
UK, ROI & NORTH AMERICA DIVISIONS



NANTO LITE & NANTO PLUS

INSTALLATION MANUAL



**TOTAL
ELECTRIC
SOLUTIONS.**

All electrical appliances produced for the Company are guaranteed for one year against faulty material or workmanship. This applies only if the appliance has been used for purposes in accordance with the instructions provided and has not been connected to an unsuitable electricity supply, or subject to misuse, neglect, damage or modified or repaired by any person not authorised by the Company. This guarantee is offered to you as an extra benefit and does not affect your legal rights. The correct electricity supply voltage is shown on the rating label attached to the appliance. Reasonable care has been taken to ensure that this guide is accurate at the time of printing. In the interest of progress the Company reserve the right to vary specifications from time to time without notice.

INSTRUCTION MANUAL

WARNINGS: This appliance can be used by children aged from 3 years and above and persons with reduced physical, sensory or mental capabilities or lack of experience and knowledge if they have been given supervision or instruction concerning use of the appliance in a safe way and understand the hazards involved. Children shall not play with the appliance. Cleaning and user maintenance shall not be made by children without supervision.

Children aged from 3 to 8 years are only allowed to operate the tap connected to the water heater.

CAUTION! Heavy item, handle with care.

1. Models N3 are designed for use at a maximum altitude of 2000m, N1, 3000m.
2. Install the appliance in a room protected from frost (4°C to 5°C minimum). If the appliance is damaged because the pressure relief valve has been blocked, it is not covered by the warranty.
3. Make sure that the wall on which the appliance is mounted can support the weight of the appliance when filled with water.
4. If the appliance is to be installed in a room or location where the ambient temperature is constantly above 35°C, ensure that the room is correctly ventilated.
5. When installed in a bathroom, do not install the appliance in volumes Z0, Z1 of fig. ②.
6. Position the appliance where it can be accessed.
7. The dimensions of required space for the installation of the device are specified in figure ②. Installation of lenticular water heater.
8. Refer to installation figures ①②③④. Hydraulic connection: follow the figures ③④.
9. If the appliance is set up in a suspended ceiling or attic, or above living space, a drain pan must be installed underneath the water heater. A drainage device connected to the sewer system is required.
10. A new pressure relief valve which conforms to current standards (EN 1487 in Europe), pressure 0.6 MPa (6 bar) and size ½" in diameter must be fitted the input of the water heater. The pressure relief valve must be protected from frost (4°C to 5°C minimum).
11. The pressure relief valve drainage device must be activated on a regular basis (every month) in order to remove limescale deposits and to check that it is not blocked.
12. Connect the pressure relief valve to an unpressurised outlet pipe (keep in the open air) in a frost free environment, with a continuous slope for the evacuation of the water during heating up or draining the water heater.
13. The circuit working pressure must not exceed 1 MPa (10 bar), its temperature must not exceed 100°C.
14. If PER pipes are used, the installation of a thermostatic regulator on the output pipe of the device is strongly recommended. It will be set according to the performance of the material used.
15. A pressure reducer (not supplied) is required if the supply pressure is greater than 0.4 MPa (4 bar) and will be installed on the main supply pipe.
16. We recommend installing a thermostatic mixer valve on the water delivery line, marked with a red collar.
17. DRAIN: Turn off the power and cold-water supply, open the hot water taps then operate the drainage valve of the pressure relief valve NOTE: For water heaters under sinks, disconnect the hydraulic unit and turn it upside down to drain.
18. Do not remove front panel. Non serviceable parts inside. Connecting the heating element directly to the network is prohibited.
19. Upstream of the appliance, the electrical installation must have a bipolar cut-out device (circuit-breaker, fuse) compliant with the local installation rules in force (30 mA residual current device).
20. Always connect the earth conductor of the cable to the earth ground wire or connect the earth conductor to the appropriate terminal identified by the symbol ⊕.
21. Check that the water heater is filled correctly before it is powered on; when a HOT WATER tap is turned on, COLD WATER should flow out.
22. These appliances comply with directives 2014/30/EU relating to electromagnetic compatibility, 2014/35/EU relating to low voltage, 2015/863/EU and 2017/2102/EU relating to ROHS directives and Commission Delegated Regulation 2013/814/EU which completes directive 2009/125/EC relating to ecodesign.
23. Do not dispose of your water heater with normal household waste, but hand it to a place assigned for this purpose (collection point) where it can be recycled.



24. The user manual for this appliance can be obtained from the After-Sales service.

1. INSTALLATION - Read warning first

- Refer to installation figures ② ③ ④
- **WARNING:** the wall plate and the head of the screws used to fix the wall plate to the wall must match to the water heater shapes. Select the adapted screw heads as the ones provided in order that the water heater is hanged by both wall plate spits and stands fully in contact with the wall before filling with water.

2. HYDRAULIC CONNECTION - Read warning first

- It is necessary to clean the supply piping prior to the hydraulic connection. The connection to the hot water outlet is to be carried out with a cast iron or steel sleeve or a dielectric connector, to avoid corrosion of the pipe (direct contact iron/copper). **The use of brass fittings is prohibited.**
- **PRESSURISED INSTALLATION** see figure ④ Always install a new safety device on the cold water pipe of the water heater.

3. ELECTRICAL CONNECTION - Read warning first

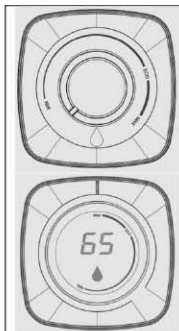
- Refer to diagrams ⑤ ⑥ according to your model.
- The water heater can be connected and operated only on AC 230V or on AC 220-240V in accordance with the rating plate of the appliance.
- Connect the heaters flexible cable to a suitable fused spur.
- Always connect the earth conductor of the cable to the earth ground wire or connect the earth conductor to the appropriate terminal identified by the symbol ⊕. This connection is compulsory for safety reasons. The earth wire green - yellow must be longer than those of phases. The installation must be equipped, upstream of the appliance, with a bipolar cut-out device (minimum contact distance of 3 mm fuse, breaker switch). In the case where the hydraulic connections are in insulated material, electrical circuits shall be protected by a differential circuit breaker 30 mA adapted to local standards.
- **Thermal circuit breaker:** all products are equipped with a thermostat having a thermal circuit breaker with manual reset which cuts the power in case of overheating.
If the safety device is tripped, cut the power before any operation and have the circuit breaker reset by a professional. In case of repetitive tripping, replace the thermostat. Never bypass safety or regulation thermostat.

4. STARTING UP

- **NEVER POWER THE WATER HEATER WITHOUT WATER:** the heating element will certainly be damaged, and this is not covered by warranty.
 - Fill the tank completely. Before powering up, open the hot water taps, drain the pipes in order to empty the air.
 - Check the tightness of the tubes and of the flange seal under the plastic cover. In case of leak, tighten moderately. Check the operating of the hydraulic components and of the safety valve.
 - Turn the power on. After 10 to 30 minutes, depending on the capacity of the device, the water should drip from the drain. This is normal and due to the expansion of water. Check connection leaks and seal. During heating and according to the water quality, hot water tanks can make a bubbling noise. This noise is normal and does not indicate any defect of the unit.
- If you see a continuous release of steam or hot water from the drain or when opening a tap, turn the power off immediately and call a professional.**

5. CONTROL AND HUMAN MACHINE INTERFACE

- Models: SWH 10A M-N1 / SWH 10U M-N1 / SWH 15A M-N1 / SWH 15U M-N1
SWH 10A M-N2 / SWH 10U M-N2 / SWH 15A M-N2 / SWH 15U M-N2



- Adjusting the temperature:** The temperature of the water may be adjusted between 7 and 67 degrees by turning the front knob. Allow half an hour for the temperature to stabilize between settings. Maximum temperature is achieved with the knob turned fully clockwise. The red LED light shows when the heating element is working, under control of the thermostat, when the water reaches the preset temperature, the thermostat deactivates the heating element automatically and Blue LED lights ON to indicate the water is ready for shower.
- Eco mode:** The ECO position on the regulation knob corresponds to a water temperature of 50 - 55°C which allows more energy saving while preventing scale build up and extending the heating element lifetime.
- Digital display** (depending on models): during the heating phase, the digital display shows the actual temperature reached by the water inside the tank. If the temperature drops, for example due to water being drawn, the heating is automatically reactivated to reach again the set temperature. The digital display gives the actual temperature not the set temperature.

6. MAINTENANCE

Operate the safety device every month to prevent scaling and check that it's not blocked. Not executing this maintenance may cause damage and the loss of the warranty.

Maintenance by qualified persons

- Drain: Turn off power and cold-water supply, open the hot water tap and the drain valve of the safety device. For under sink water heater, disconnect the hydraulic tubes and turn upside down to empty.

Advice to the user: In case of hard water with TH > 20°f (>200 ppm), we recommended to soften the water. If a water softener is used, the remaining water hardness should be more than 15°f. In the case of a long absence particularly in cold season, drain your device and then follow the procedures for starting up.

7. WARRANTY

The water heater must be installed, operated and maintained in accordance with the state of the art and with the standards in force in the country of installation and the instructions in this manual. In the European Union this unit has the legal guarantee granted to consumers under Directive 1999/44/EC, this warranty is effective from the date of delivery of the goods to the consumer. In addition to the legal guarantee, some products have an extended warranty, limited to the free replacement of the tank and components recognized as defective, excluding replacement and transport cost. Refer to the table below. This warranty does not affect any rights you may benefit as a result of the application of the statutory warranty. It applies in the country of purchase of the product, provided it is also installed on the same territory. Any damage must be reported to the depositary before exchange under warranty and the unit will remain available to insurance experts and to the manufacturer.

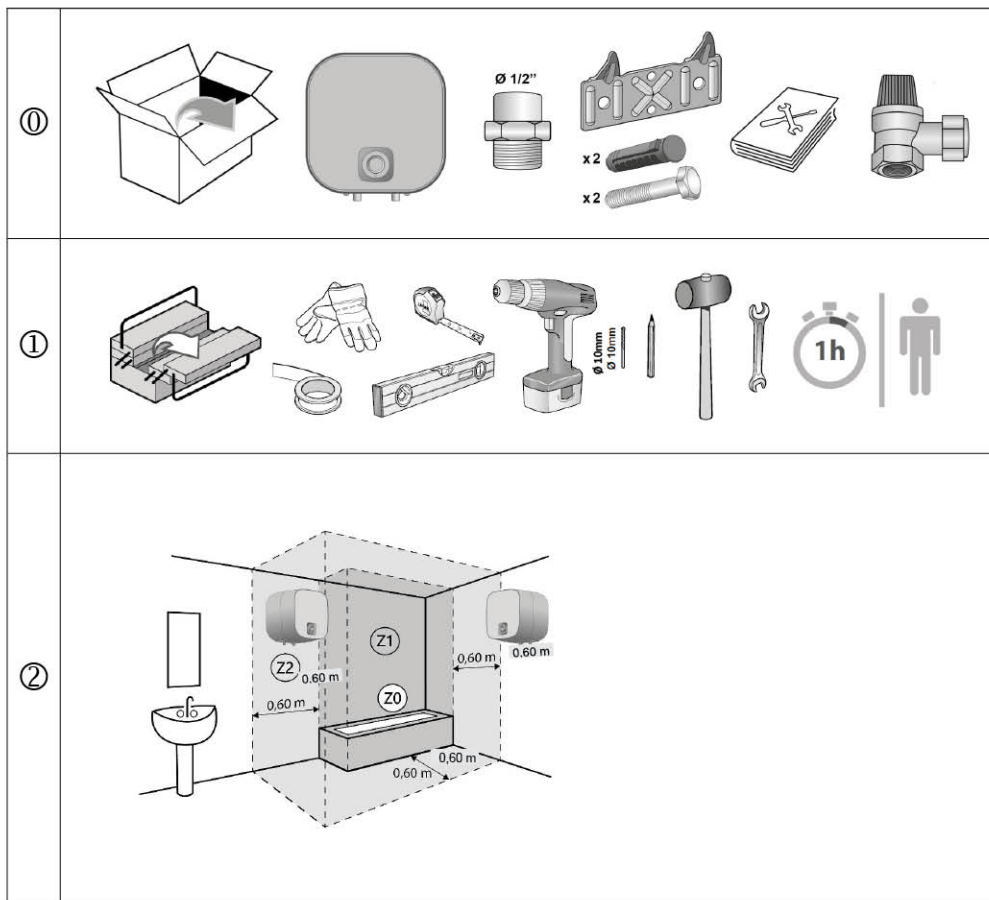
Exclusions: Equipment which cannot be accessed (access difficult for repair, maintenance or assessment). Devices exposed to abnormal environmental conditions: frost, outdoor weather, water with abnormal chemical characteristics outside drinking water criteria, mains network with power peaks. Equipment installed without observing current standards in the country of installation: absence or incorrect safety device, abnormal corrosion due to incorrect hydraulic fittings (iron/copper contact), incorrect earthing, inadequate cable thickness, non-observance of the connection drawings showed in these instructions. Equipment not maintained in accordance with these instructions. Repairs or replacement of parts or components in the equipment not carried out or not authorised by the company responsible for the guarantee. The change of a component does not extend the warranty period for the device. The warranty shall apply to products that are defective and appraised by the company liable for warranty. It is compulsory to keep the products available to the latter.

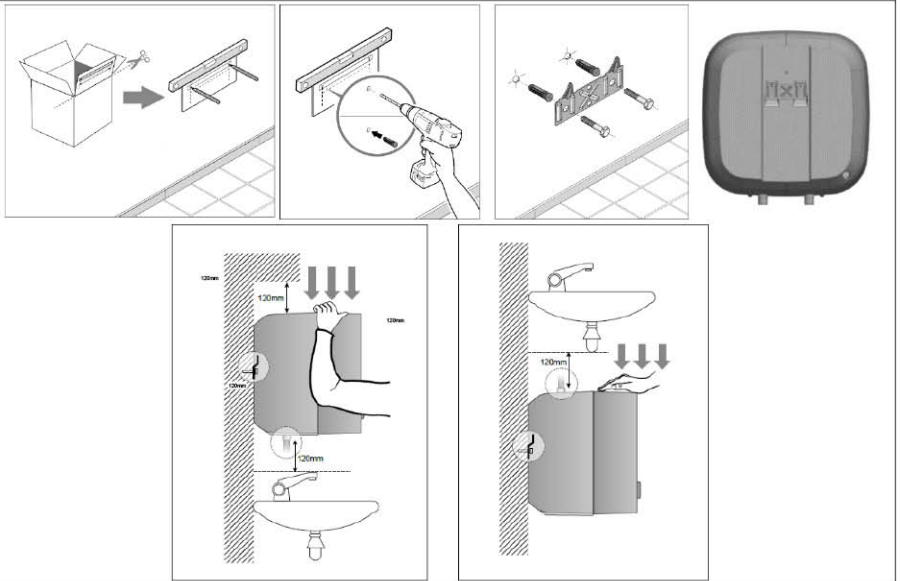
To claim under guarantee, contact your installer or dealer. If necessary, contact: Atlantic | PO Box 103, National avenue, Kingston Upon Hull, HU5 4JN.

T: 01482 498220 F: 0844 5436 180

Warranty period	2 years
Type / Reference :	DEALER'S STAMP
Serial number:	
Name and address of customer:	

	Output (W) (230 V~)	Voltage (V~)	Wall mount	Pipe mount	Pipe Ø	Wiring
SWH 10A M-N1	2000	220-240	① ② ③	③ ④	1/2"	⑤ ⑥
SWH 10U M-N1						
SWH 10A M-N2						
SWH 10U M-N2						
SWH 15A M-N1						
SWH 15U M-N1						
SWH 15A M-N2						
SWH 15U M-N2						



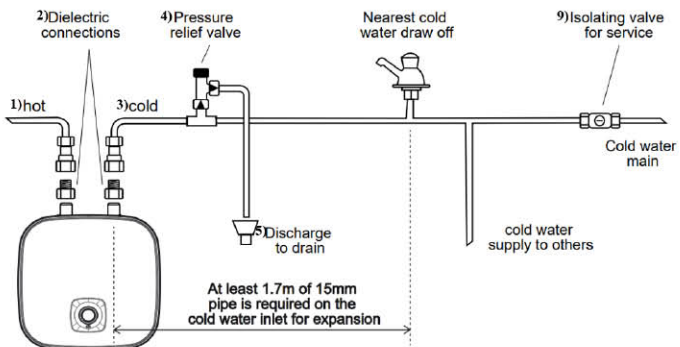


EN Pressurized

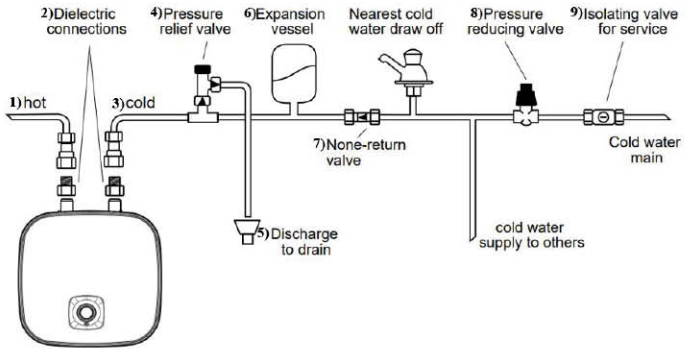
- 1) Hot Water
- 2) Dielectric connections
- 3) Cold water
- 4) Pressure relief valve
- 5) Drain
- 6) Expansion vessel
- 7) Non-return valve
- 8) Pressure reducing valve - recommended if pressure > 4 bar (0.4MPa)
- 9) Isolating valve for service

Installation in case water pressure less than 4bar

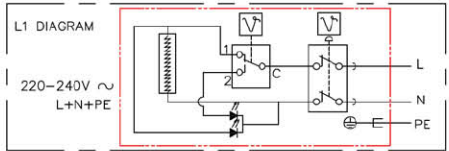
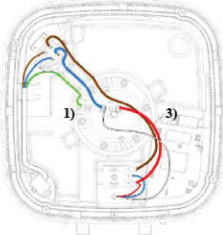
④



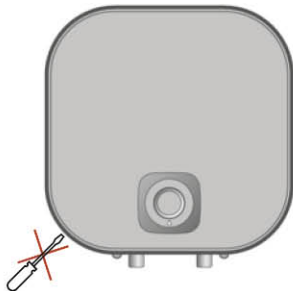
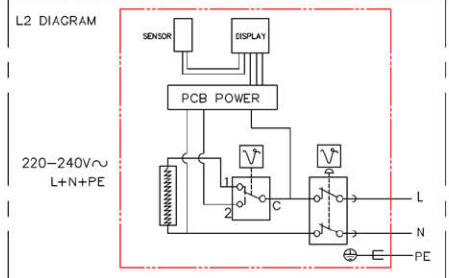
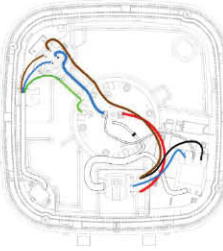
**Installation in case water pressure over 4bar
(pressure reducing valve installed)**



5



6



▲ DO NOT REMOVE FRONT PANEL.

atlantic

Experts in **Electric Heating and Hot Water**

atlantichheat.co.uk |     

T: 0844 3350 549 F: 0844 5436 180
E: enquiries@atlantic-heat.co.uk
Atlantic | PO Box 103, National Avenue,
Kingston Upon Hull, HU5 4JN

 **GROUPE
ATLANTIC**
UK, ROI & NORTH AMERICA DIVISIONS