

## General

Our products are designed to comply with the recommended codes of practice for lighting and to be installed and serviced by competent persons in accordance with the relevant regulations.

## Contents

- Smart Outdoor Camera
- 2 x Lithium 18650 Batteries
- Magnetic base
- Micro USB Cable
- Micro SD Card

## Preparation For Use

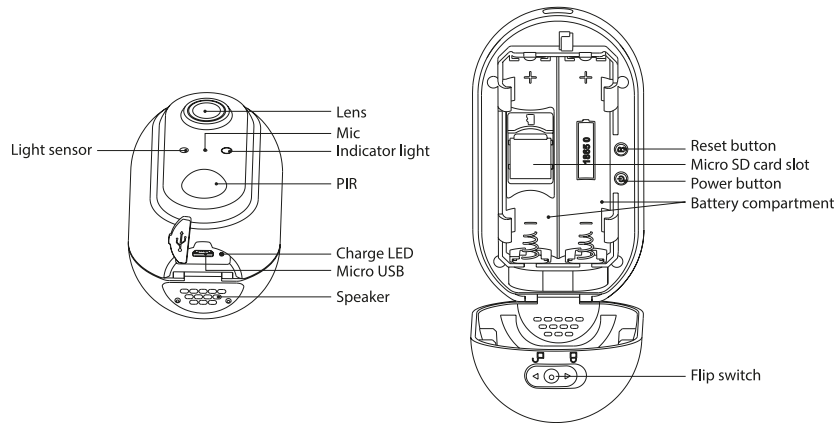
Ensure that the smart phone is connected to the same Wi-Fi network that you would like to attach the device.

Ensure that you have a mobile device running iOS 8 or higher or Android 4.1x or higher and a 2.4GHzWi-Fi connection.



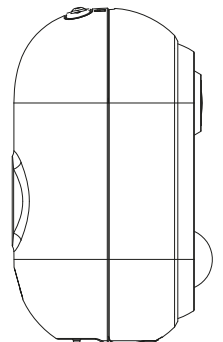
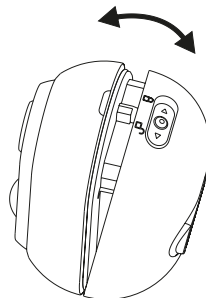
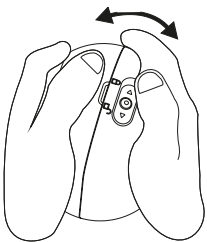
Download the ClickSmart+ App on your mobile device from the App Store or Google Play.

Sign in or Register following the instructions on the ClickSmart+ App.



## Installation

- Flick the locking switch, and open the rear casing. Insert the MicroSD Card & batteries (taking note of the polarity).
- Install the magnetic base to the desired surface, and place against the back of the camera, where the magnetic element is located.

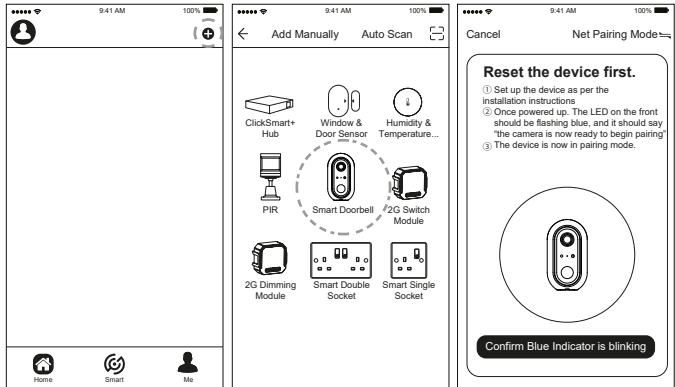




## Pairing with the app

1. Power up the device VIA the 5V Micro USB Cable, and fully charge
2. Once powered up. The LED on the front should be flashing blue, and it should say “the camera is now ready to being pairing”.

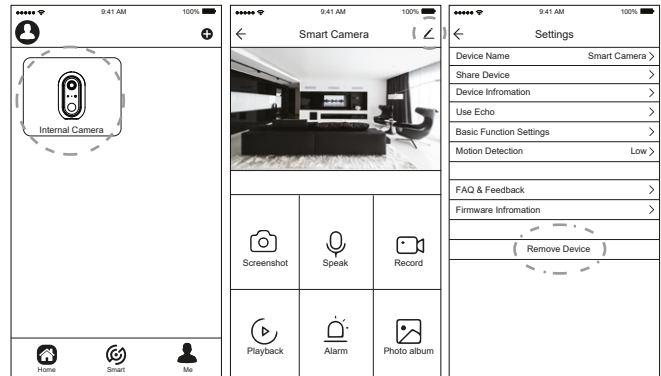
The ClickSmart+ app will guide you through:  
 Entering the Wi-Fi Network and Password.  
 Using the Camera to scan a QR code.  
 Connecting the Device.



## Resetting the Device

If the camera needs to be reset, connected to a new Wi-Fi network, or if it needs to be paired with a new master account, remove the device from the app, prior to resetting the device.

1. Using the reset key, long press the reset button until “system reset” is heard.
2. The device should now be reset, after 30 seconds, the unit should start to flash blue, and say “the system is now ready to begin pairing”.



## Guidance

- >8-12hrs charge time required for full battery capacity
- >Unit requires a minimum of 2 Mbps (upload/download)
- >This unit only operates on 2.4GHz
- >If the signal strength of your Wi-Fi router is weak: Change router/camera relative position to receive better signal, Use Wi-Fi repeater/extender to maximize the range of your Wi-Fi router.
- >If the device is installed on a new network the unit will require resetting
- >If the camera needs to be added to a new account, unbind the device from the first account prior to resetting the device.

For more product information please visit the ESP website



Elite Security Products  
 Redditch B98 8YN



Telephone : 01527 51 51 50  
 Fax: 01527 51 51 43  
 Email : info@espuk.com  
 Web : www.espuk.com  
 E&OE - Errors and omissions excepted.E21