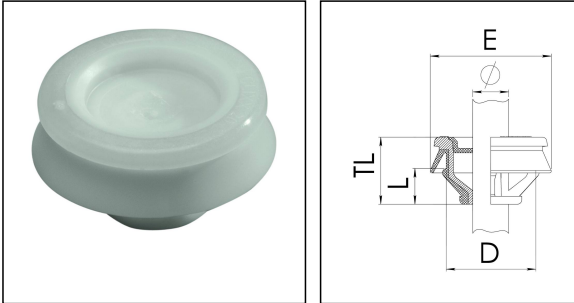


CLIXX® 16 LG

Membrane cable entrie with strain relief



Products may differ in size, colour and appearance to those shown. If you require further information or customisation, please contact us directly.



| | |
|---------------------------------|-------------------|
| Material | Polypropylene |
| Material membrane | TPE |
| Temp. range min | -40 °C |
| Temp. range max | 65 °C |
| Glow wire test | 750 °C |
| Protection class | IP66 / IP67 |
| Ø Connection thread D | 16 |
| Length screw-in thread L | 7,3 mm |
| Ø cable diameter min | 4,5 mm |
| Ø cable diameter max | 10 mm |
| Collar diameter (E) | 23 mm - 28 mm |
| Total length TL | 15 mm |
| Ø Drilling | 16,5 mm - 16,7 mm |
| Wall thickness S | 0,8 mm - 3,5 mm |
| Product Color | RAL 7035 |
| Order no. RAL 7035 | 10101861 |
| Type | CLIXX® 16 LG |
| Packing unit | 50 |
| EAN number | 4007685041843 |
| Tariff number | 39269097 |
| ETIM-Classification | EC000451 |

10.05.2023

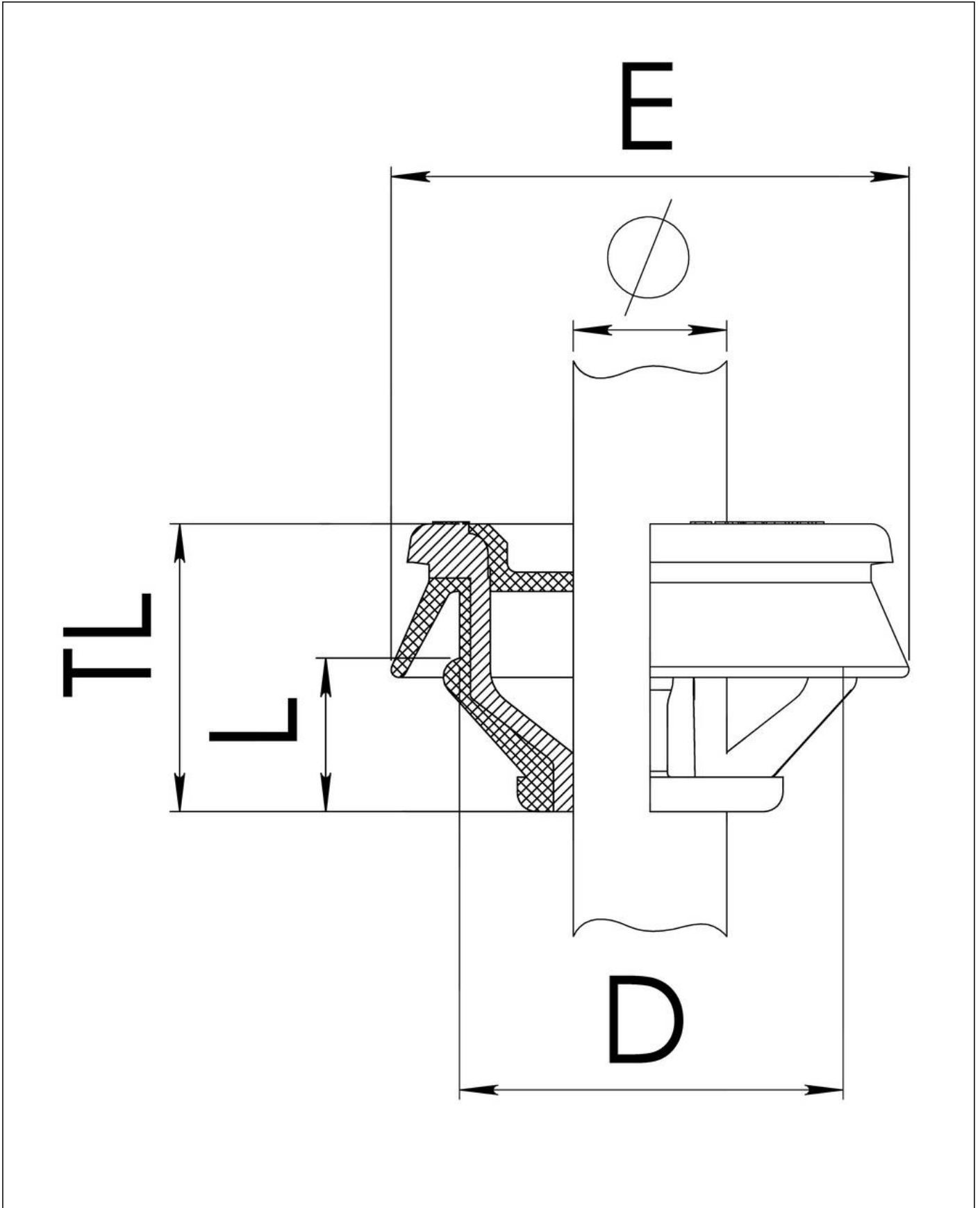
Your Contact:

WISKA UK Ltd.

Unit 7, Hurling Way · St. Columb Major Business Park · TR9 6SX, St. Columb Major, Cornwall · Great Britain

☎ +44-12-08816062 · 📠 +44-12-08816708

info@wiska.co.uk · www.wiska.co.uk



Your Contact:

WISKA UK Ltd.

Unit 7, Hurling Way · St. Columb Major Business Park · TR9 6SX, St. Columb Major, Cornwall · Great Britain

☎ +44-12-08816062 · 📠 +44-12-08816708

info@wiska.co.uk · www.wiska.co.uk