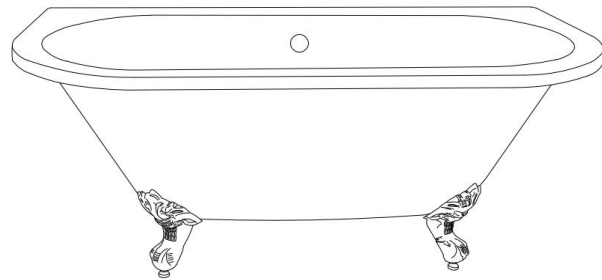


# Freestanding Bath with Claw feet Maintenance & Instructions



Mortlake Freestanding Bath

Metal Feet do NOT come with the bath and must be Purchased Separately  
Product must be installed in compliance with relevant Water Bylaws

## Receive Your Bath

### Unpack and check for damage.

After receiving your bath, please unpack and remove all packaging, checking for damage. Repack the bath if it is not being immediately installed.

Metal bars required for feet installation are attached to the underside of the bath.

Metal Feet do NOT come with the bath and must be Purchased Separately

### Protect your bath.

Before commencing installation, ensure the bath is completely protected, leave covering in place until the bathroom is complete. Scratches and damage incurred during installation are not covered by the

## Important information

- \* Two people are required for installation.
- \* Freestanding bath is not designed to take weight on the rim.
- \* Do not sit or stand on the bath rim.

## Spare Parts

Part No.	Part Description	Qty (pcs)	Image
<b>Part 1 - Metal Bar Box (Bars attached to underside of bath rim)</b>			
A	Metal Bar-187mm	4	
<b>Part 2 - Metal Feet Box (NOT come with the bath and must be Purchased Separately)</b>			
B	Bolt	4	
C	Nut	4 (pre-assembled on the feet)	
D	Washer	4	
E	Fastener washer	4	
F	Adjustable feet	4	
<b>Part 3- Pre-assembled on the underside of the bath</b>			
C	Nut	8	
D	Washer	8	

## TOOLS REQUIRED

	Adjustable Wrench
--	-------------------

## Installation

### Step1

- ① Ensure the bath is on a soft surface to protect against scratches.
- ② Take off the plastic covers of screws and unscrew nuts and washers from the bath (these are pre-assembled on bath). See Figure 1
- ③ Place the metal bars onto the bath, along with the washers and nuts as shown below, do not tighten at this stage to allow for adjustment, taking care not to damage the bath surface. See Figure 2

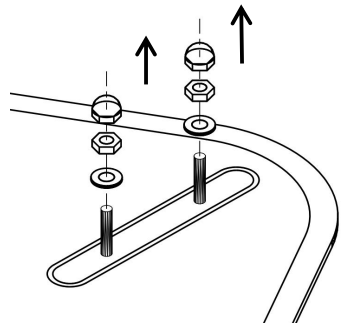


Figure1

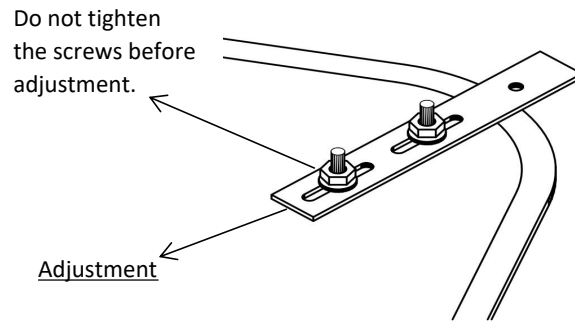


Figure2

## Step 2

- ① Position the feet on the bar, fasten with washers, fastener washers and bolts, but not tighten the bolts right away. See Figure 3
- ② Adjust the position of the feet to align with the bath, metal bars could be adjusted if needed. See Figure 4
- ③ Tighten all of the nuts so that the feet are secured to the metal bar and the metal bars are secured to the bath. See Figure 5

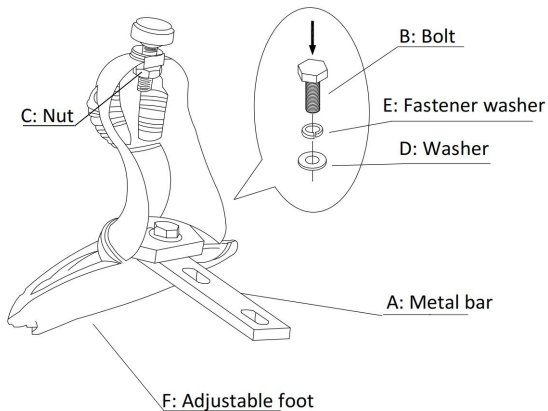


Figure 3

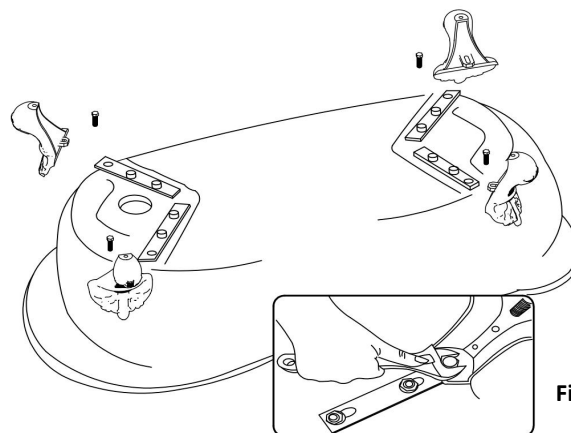


Figure 4

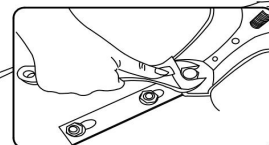


Figure 5

## Step 3

Assemble the overflow and waste (not supplied with the bath).

Connect the bath trap (not supplied with the bath) to the fitted bath waste and connect that to the bathroom's waste pipes.

## Step 4

Place the bath to the desired location and water test the bath for any leaks before use.

## Troubleshooting

Movement or noise on the feet after assembly

Please check if the feet are assembled properly, make sure fastener washers and washers are placed correctly.

## Maintenance & Cleaning

- a. Marks on the surface of the bath, should be cleaned using a soft damp cloth, for more stubborn marks, toothpaste can be applied and then rinsed thoroughly.
- b. No harsh cleaning chemicals or abrasive materials can be used on any surface. If using coloured oils/creams, carry out a test on small area prior to use to ensure that these will not cause staining.
- c. Never pour coloured oils/creams directly into an empty bath, always apply them into the bath water.

## WARNING

Pay attention to below points if the bath is designed with tap deck.

- a. The tap holes are not pre-drilled on the deck, drill holes according to your need.
- b. Check and silicone the tap holes to make sure the reinforcement layer is still solid after drilling.
- c. Check and make sure that there is no water leakage at the faucet.

**Technical Helpline: 01452 317890**  
**Email: [technical@eastbrookco.com](mailto:technical@eastbrookco.com)**  
**Eastbrook Road, Gloucester GL4 3DB**