

Installation and operation instructions

I. Installation Notice

1. Please ensure all pipes are clean of debris.
2. After installation, test to ensure there are no leaks. Illustration A.



II. Operation Notice

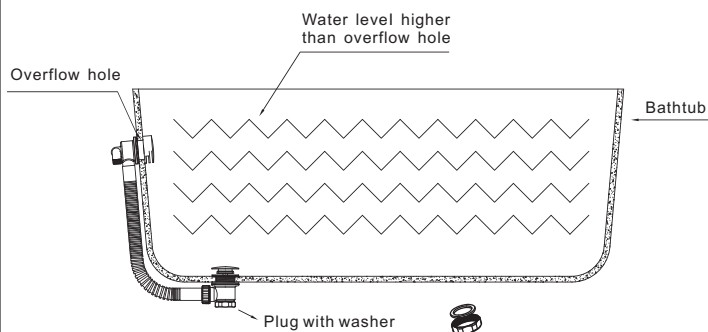
1. The product is suitable for use between water pressure 0.5 to 4bar, water temperature 0-90°C.
2. Regularly clean the product with soft damp cloth. Please be advised that no abrasive agents or materials or harsh chemicals can be used for cleaning this product, otherwise warranty will be void. Please clean with warm soapy water, use soft cloth only.
3. Read all the instructions completely before proceeding.
4. Product is suitable for bathtub thickness 4-15mm.

III. Installing steps

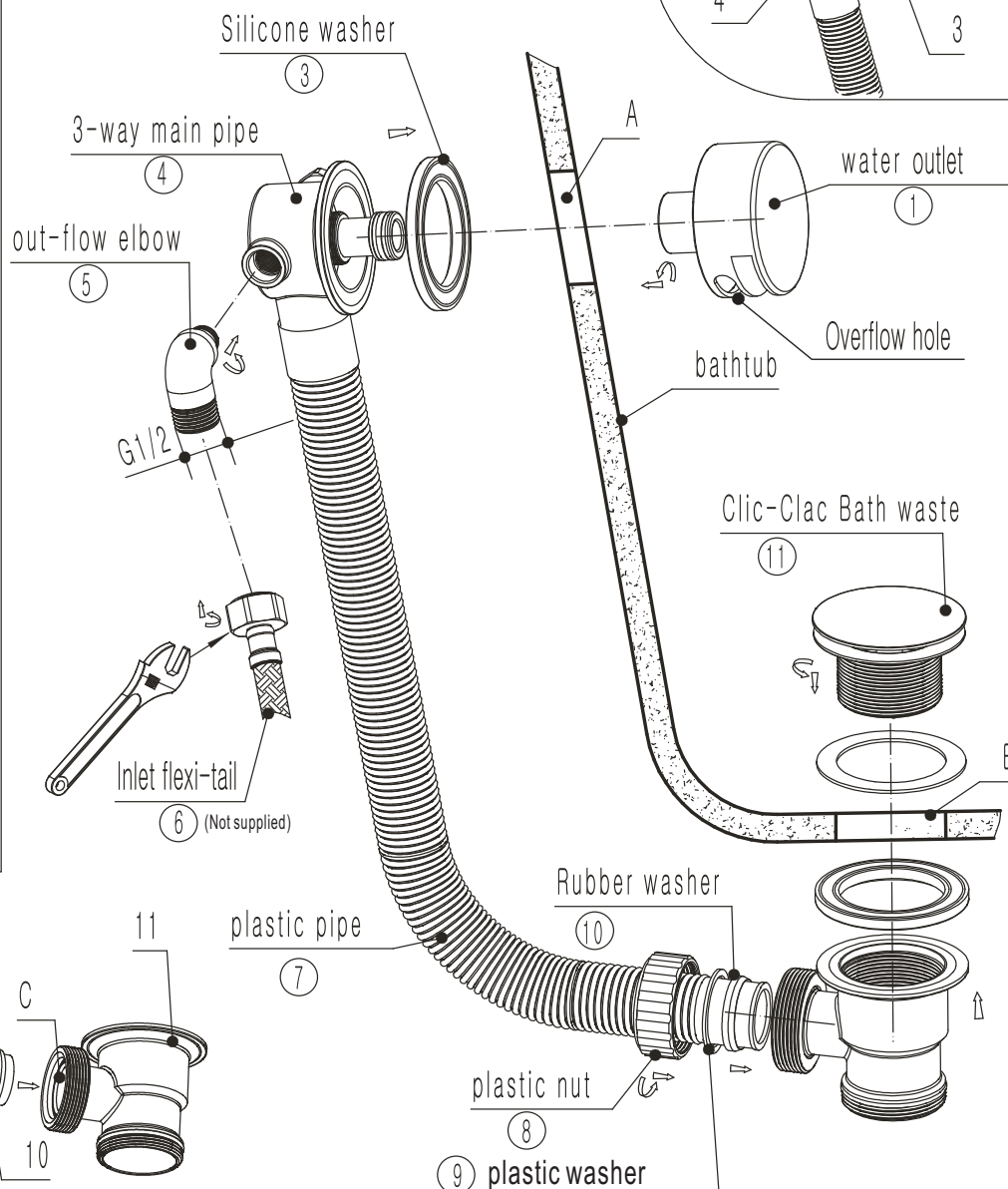
1. As demonstrated on figure I, parts 1, 3, should be separated from the 3-way main pipe (4).
2. As demonstrated on figure II, part 3, to be connected onto main pipe (4) in order, then take through hole A (overflow) of bath. Then tighten part 1 on the surface of the bath with part 4 (take care when adjusting the direction of the water outlet slot).
3. Connect the top of part 5 onto 3-way pipe. Connect the tail of part 5 with part 6 inlet flexi-tail (not supplied).
4. Install part 11 Clic-clac Bath Waste onto bath outlet B.
5. As per figure III, tighten parts 8, 9, 10 onto plastic main pipe, then connect to part 11 clic-clac bath waste (Note part No. 7 plastic pipe should be inserted into hole C by at least 10mm, and at the same time make sure no. 8 plastic nut is fully tightened).
6. Turn on water supply and check all the joints to ensure there are no leaks.

Illustration A

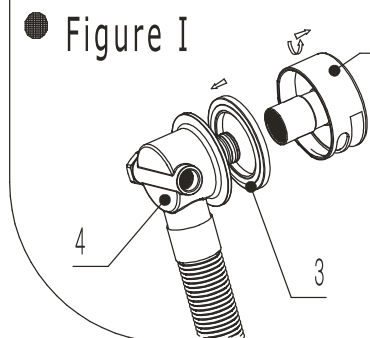
Note: Once assembled, fill the bath with water, check for leaks.



● Figure II



● Figure I



● Figure III

