

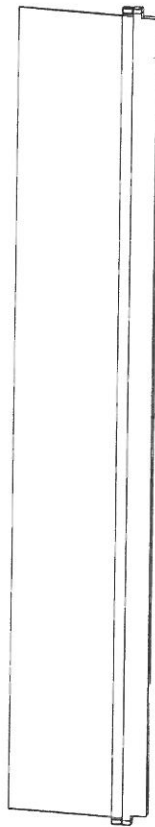
Square Pole Flipper Panel

Instructions

69.0155 Flipper for Straight Square Pole

69.0156 Flipper for Offset Square Pole

This product should only be fitted by a fully qualified installer

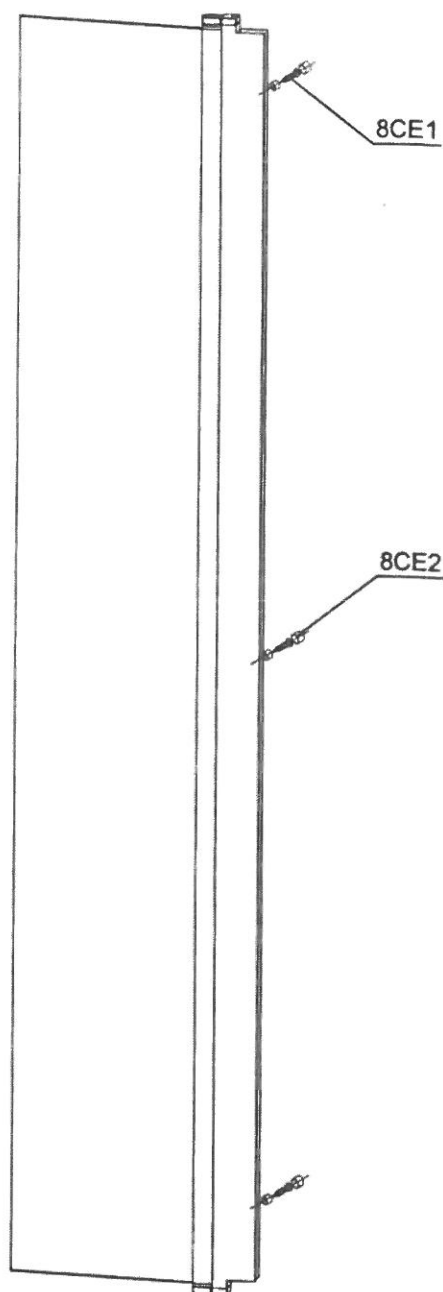


This product should be unpacked and checked for quality prior to install.

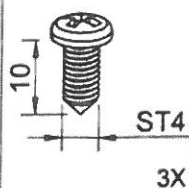
Any missing parts or damage must be reported to your supplier within 10 days of purchase and before installation.

No claims can be enforced outside of these terms

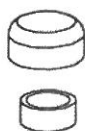
A0703H1



8CE1



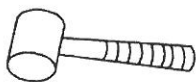
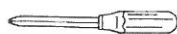
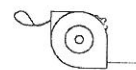
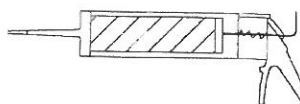
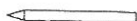
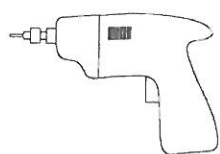
8CE2



3X

Please make the following checks before commencing installation:

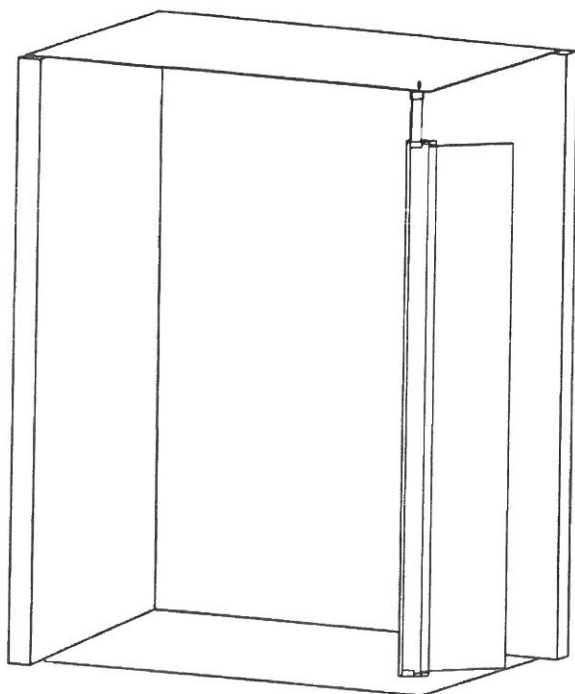
- The product supplied is the required size and adjustment is compatible with the site situation .
- Check all component parts are present ; see packing list and product schematic diagram for reference.
- Make sure you have all the tools required.



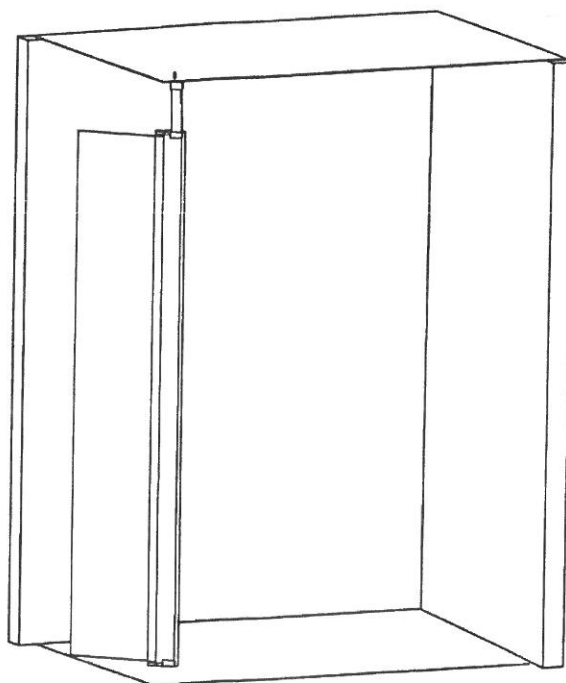
Ø6



Ø3.2

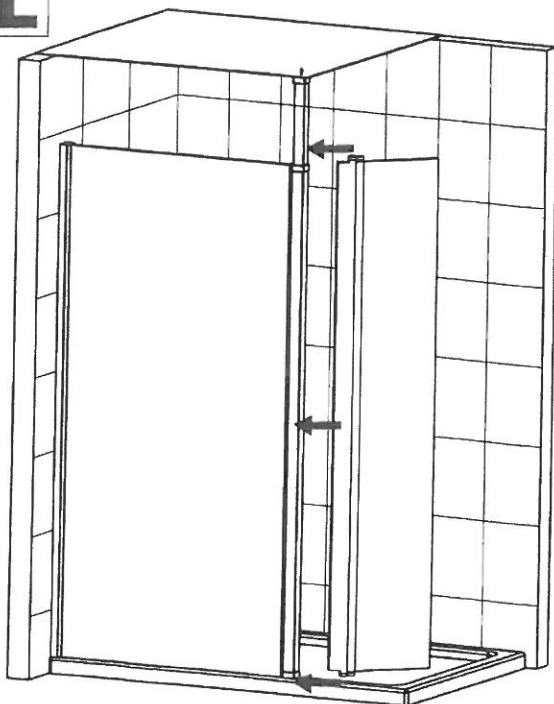


LH

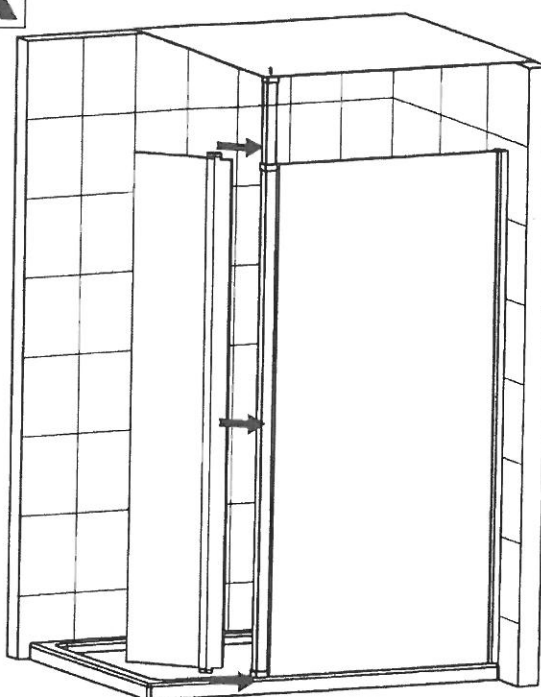


RH

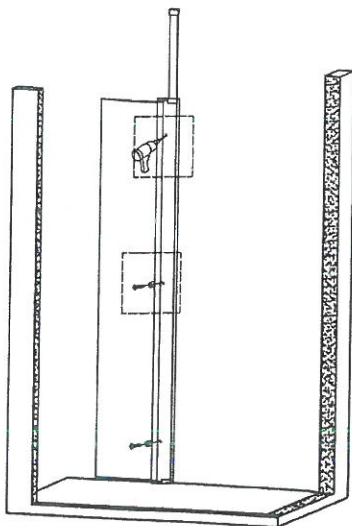
1L



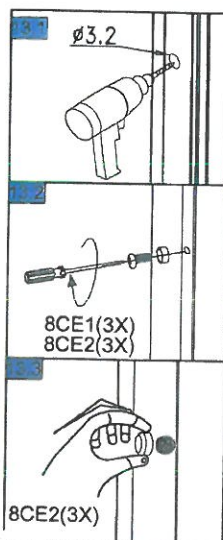
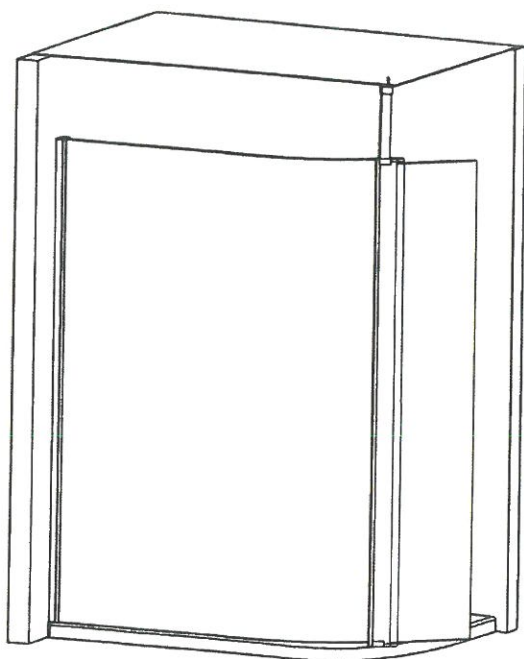
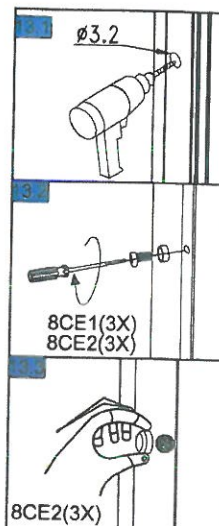
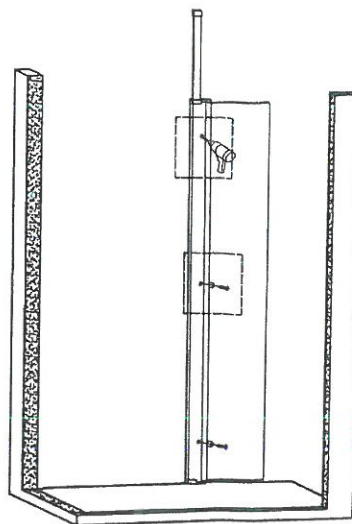
1R



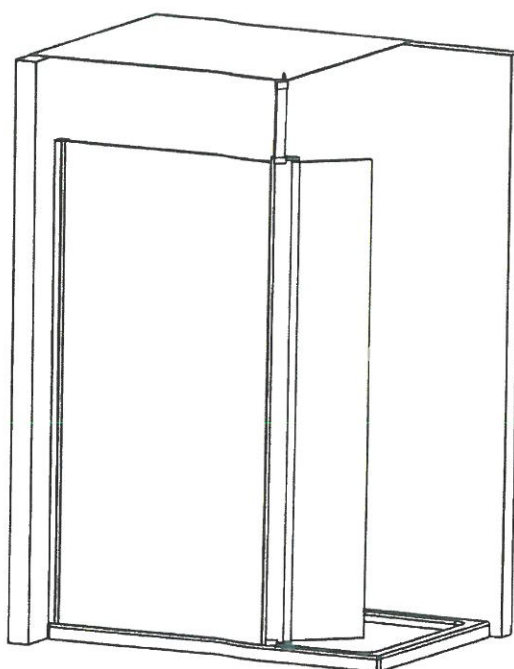
Install main panel as shown in instructions.

2L

Lift flipper into place.
Level and check adjustment
then drill guide hole on
inside with 3.2mm bit.
Attach flipper with screw,
washers,caps.

**2R**

Flipper on offset square pole



Flipper on straight square pole

Cleaning & Maintenance

Do not clean the shower enclosure with irritant detergents such as alcohol, bleach or other chemical cleaners.

Only clean with warm soapy water.

After the installation is complete and during the life of the enclosure should you find there is a notable noise or stiffness in the hinges, you may add a small quantity of silicone lubricant onto the hinges.

Helpline: 01452 317890

Mon – Fri

8.00am – 5.00pm