

A		B					C		D	
▶ Critical Dimension	Perspective drawing	Tolerance grade not noted	Basic size	0 < a ≤ 6	6 < a ≤ 30	30 < a ≤ 120	120 < a	Note the Angle tolerance		
▶ Most important dimensions			Tol Value	±0.1	±0.3	±0.5	±1	±1°		

1

2

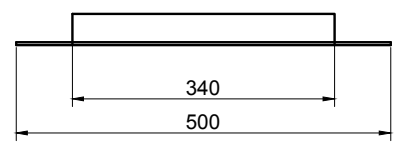
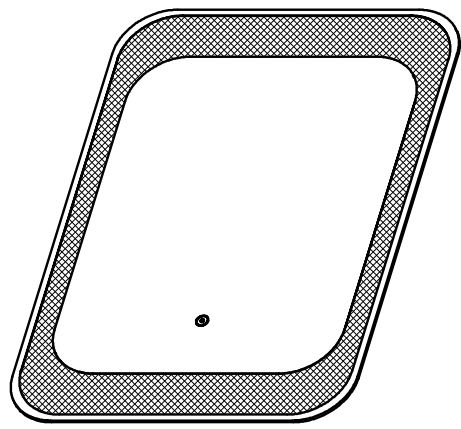
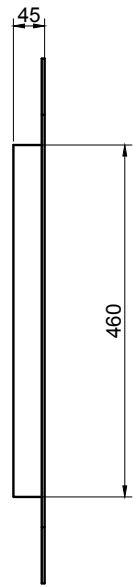
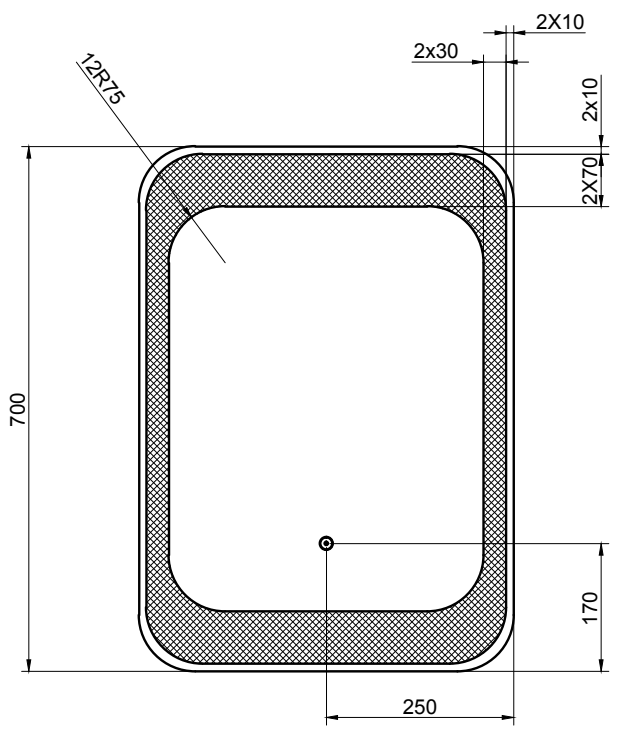
3

4

1

2

4



Technical requirements:

- 1、 Size: 500 * 700 * 45mm .
- 2、 4MM copper free silver mirror.
- 3、 Sensor touch control .
- 4、 LED 2835 lighting temperature of 6400k+/-300 white.
- 5、 Watt: 25W, Lumen specification: 1840 lumen.
- 6、 Input: 220~240V, output: DC12V.

Version	Quantity	ECN number	Modifier	Date

Statement: This the graph is confidential, copyright owned by ORI, without the written permission of the company shall not use, copy, or show other people

Theoretical weight[g]	Client Version
Theoretical volume[cm ³]	Version NO.
Theoretical area[cm ²]	Drawing Units
Superficial area[cm ²]	Proportion
	mm

Trade name			Material	
Drawing NO.	40.1002		Page 1/A total of 1 page	
Design		Auditor		
Proofread		Ratify		
Date				

Orient Resource Corporation Limited
 #8 of Xinling Road, Xiaolong village, Shiji Town, Panyu disctict, Guangzhou city, Guangdong Province, China.

A

B

C

D