

# INSTALLATION MANUAL

## 1. Mounting.

### Wall Hung Cabinet Mounting

Locate the furniture in your bathroom, see figure 1 & 2.

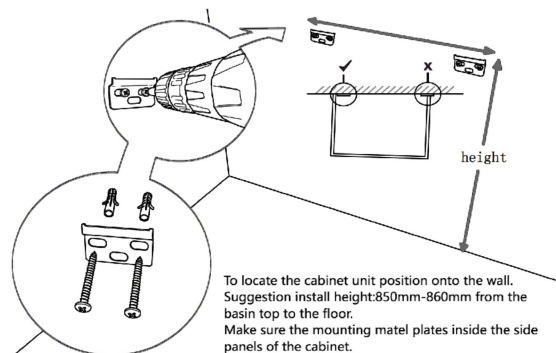


Figure1

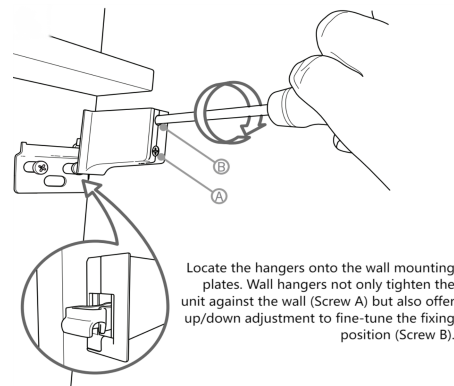


Figure2

### Free Standing Cabinet Mounting

Locate the furniture in your bathroom, see figure 3 & 4.

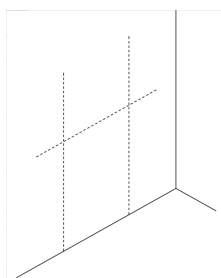


Figure3

>>> Set the furniture on the position.

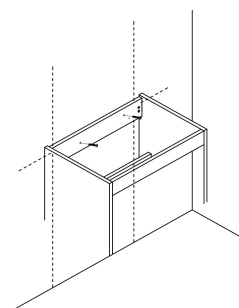


Figure4

Technical Helpline: 01452 317890

Email: [technical@eastbrookco.com](mailto:technical@eastbrookco.com)

Eastbrook Road, Gloucester GL4 3DB

## 2. Drawer Adjustment

Remove the drawer, see figure 5 .

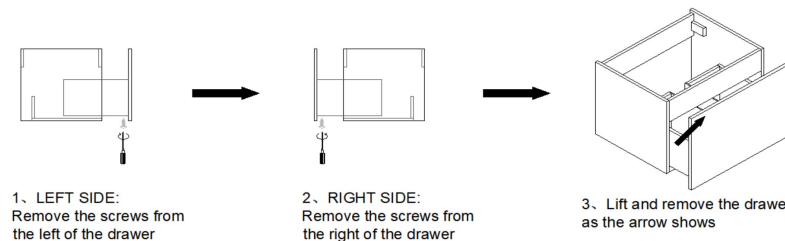


Figure5

Adjust the drawer, see figure 6 & 7.

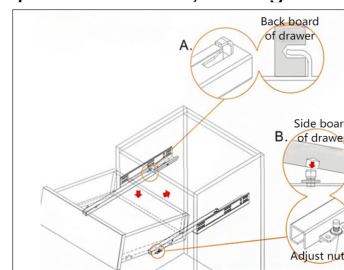


Figure6

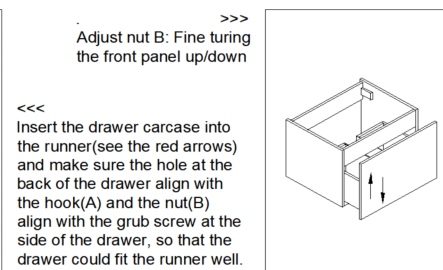
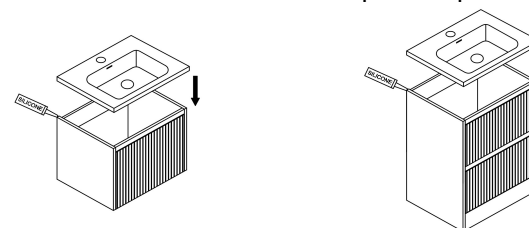


Figure7

## 3. Basin Fitting

When fitting the basin to this unit, you are required to apply an adequate sealing compound between the basin and unit to prevent potential water damage.



## 4. Product Maintenance

To maintain the surface finish of your product, please ensure:

- The room is well ventilated.
- Excess water which may sit on the surface is wiped dry.
- Any bathroom products being used which may splash on the surface are wiped clean.
- Any soap residue is wiped clean.
- Use only a clean damp cloth, no abrasive cleaning solutions or material can be used on the product, as this will invalidate your guarantee