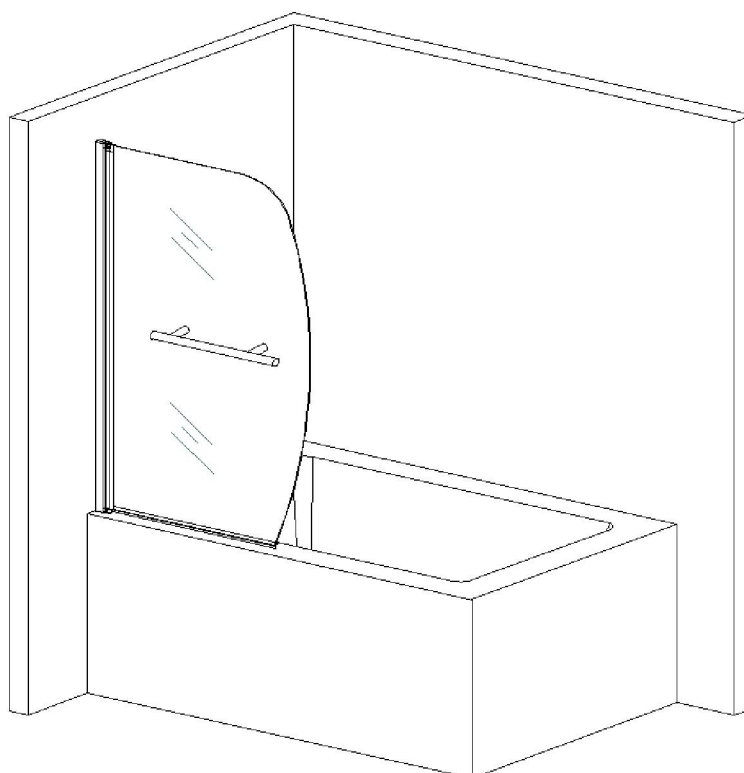


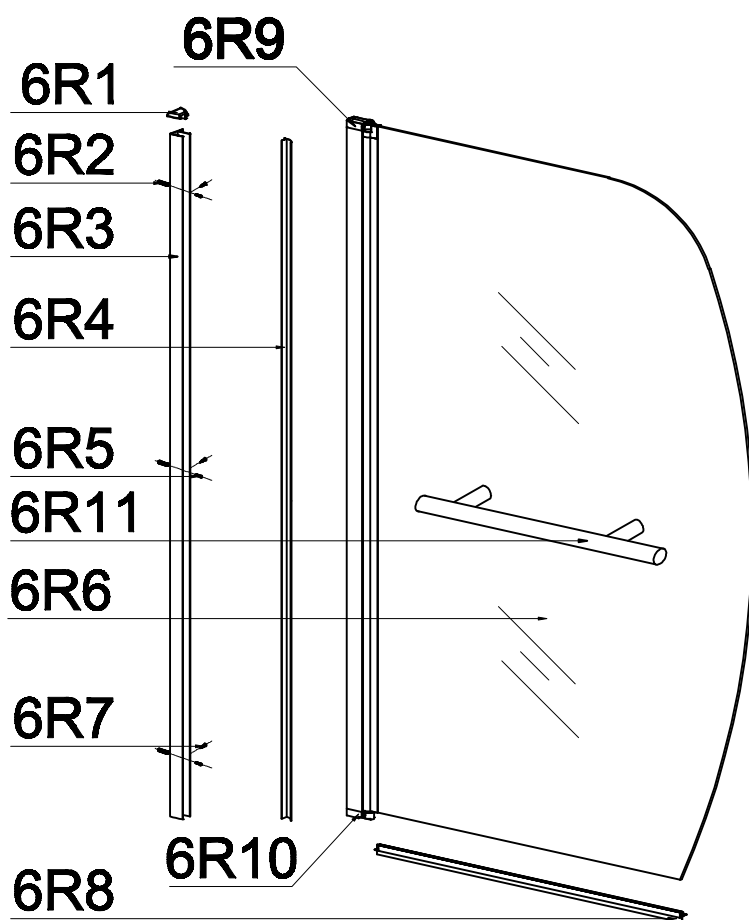
INSTALLATION MANUAL

Eastbrook

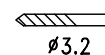
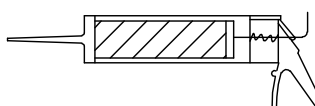
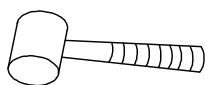
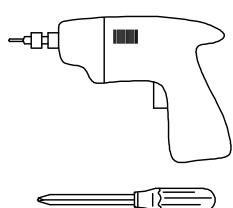
Eastbrook Road, Gloucester GL4 3DB
Technical Helpline: 01452 317890
email: technical@eastbrookco.com

Eastbrook Code	Adjustment	Eastbrook Code	Adjustment
69.701	740-760		

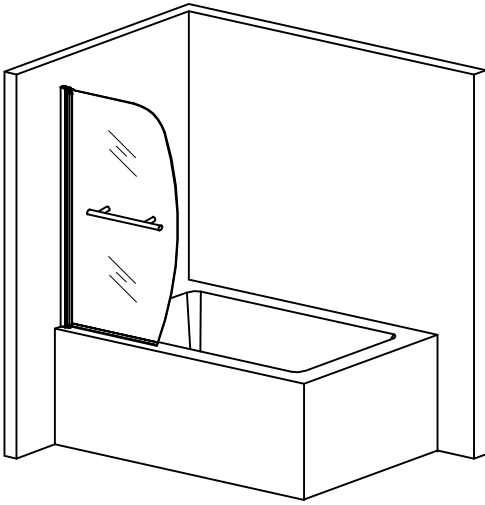
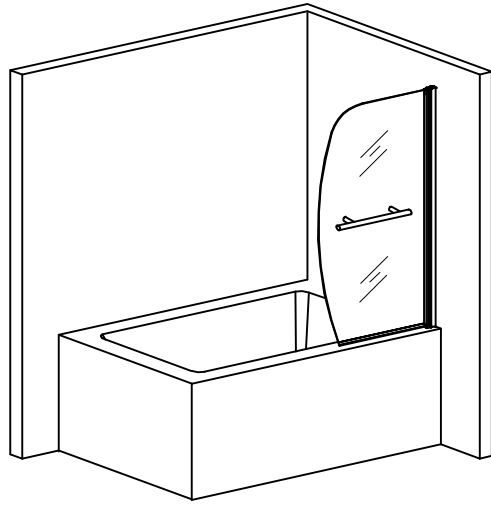
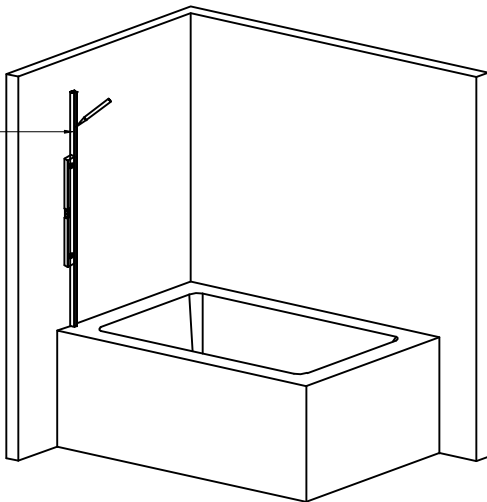




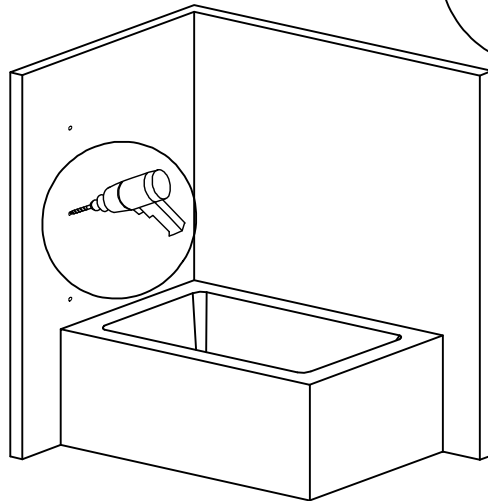
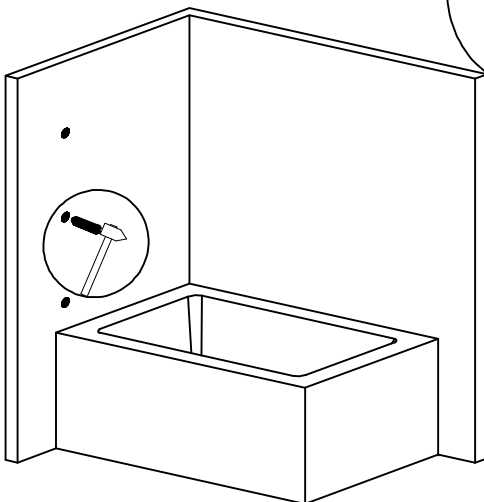
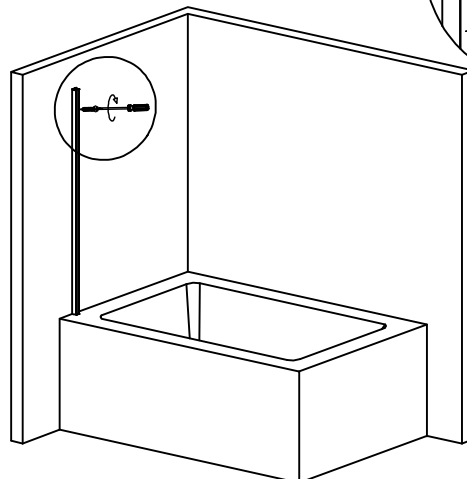
This product should only be fixed by a fully qualified installer



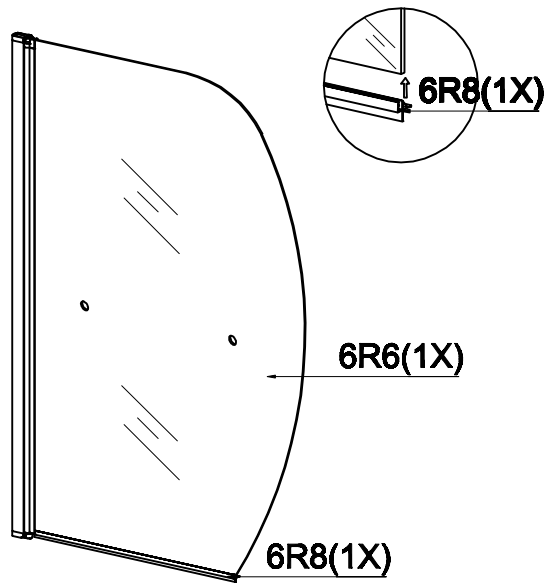
6R1 2X	6R2 3X	6R3 1X	6R4 1X	6R5 3X
6R7 3X	6R8 2X	6R9 2X	6R10 2X	6R11 1X

L**R****1****6R3(1X)**

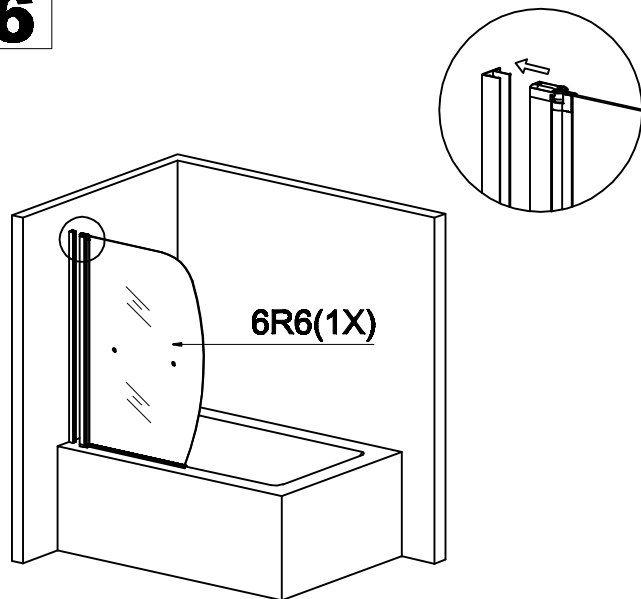
Dry fit required for best position to connect wall profile

2**3****6R2(3X)****4****6R5(3x)****6R3(1X)**

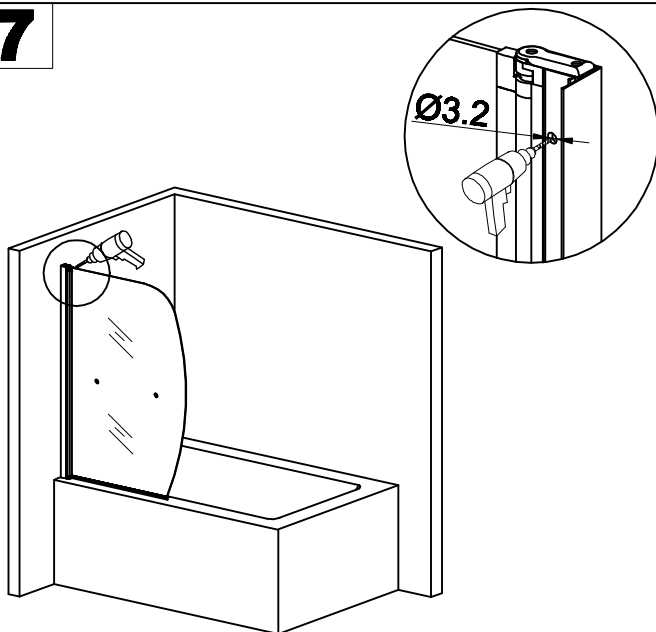
5



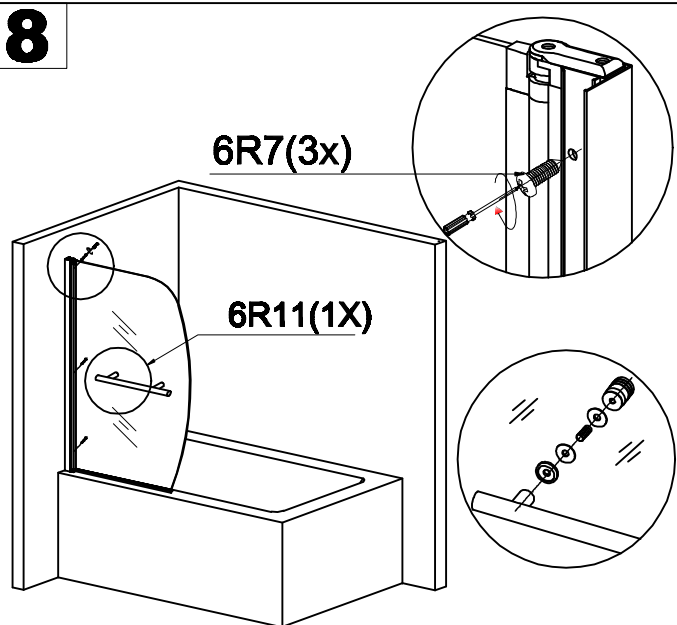
6



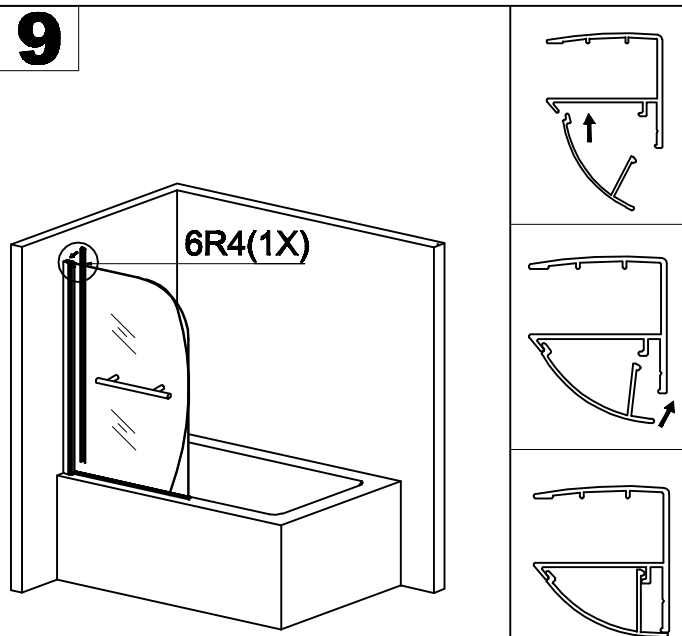
7



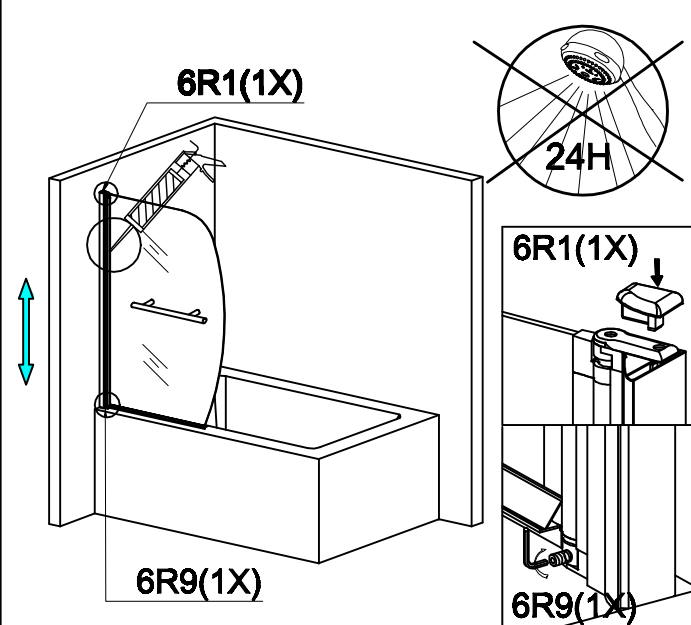
8



9



Silicone on the outside of the screen only



Cleaning & Maintenance

Don't clean the shower enclosure with irritant detergent such as alcohol,bleach or other chemical cleaners.

Only clean with warm soapy water.

After the installation is completed,should you find that there is notable noise when the glass door moves,you may add a small quantity of lubricant onto the roller wheel,slipping hook and the track.

Helpline: 01452 317890