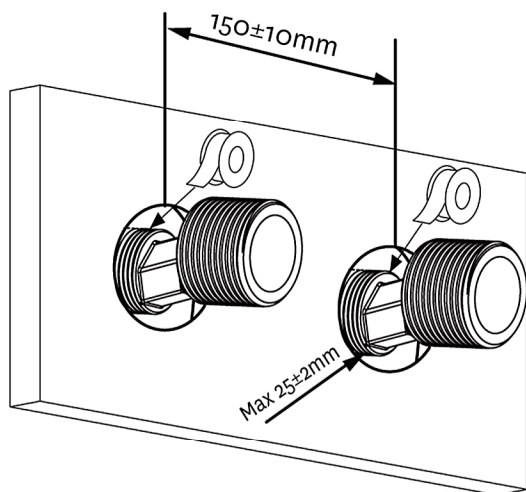


Eastbrook Road, Gloucester GL4 3DB
Technical Helpline : 01452 317890
Mon - Fri / 8am - 5pm
Email : technical@eastbrookco.com

1.

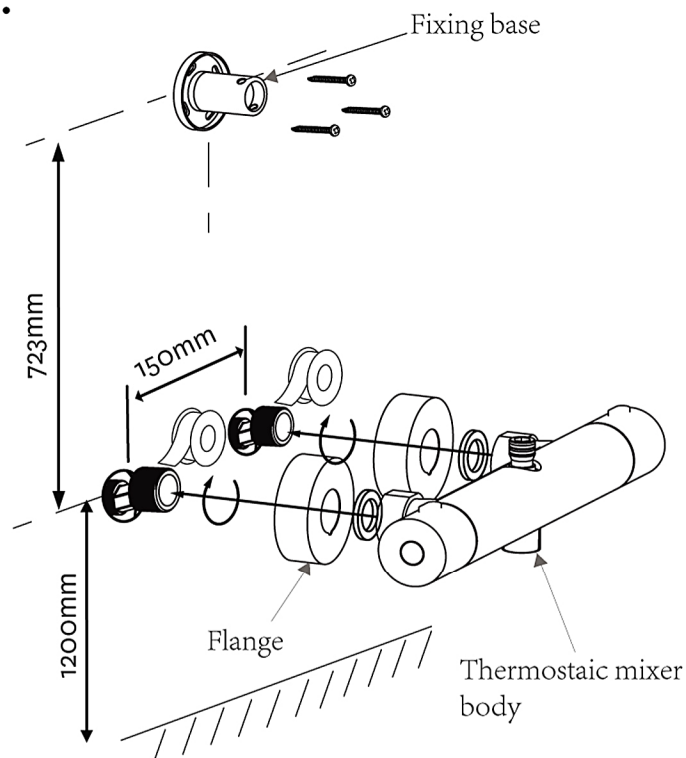
WATER INLET: RECOMMENDED MINIMUM HEIGHT OF 1200mm FROM FLOOR LEVEL



Install a ½" male threaded connection at the recommended height on wall, ensuring that a minimum of 25±2mm of thread protrudes past the finished wall.

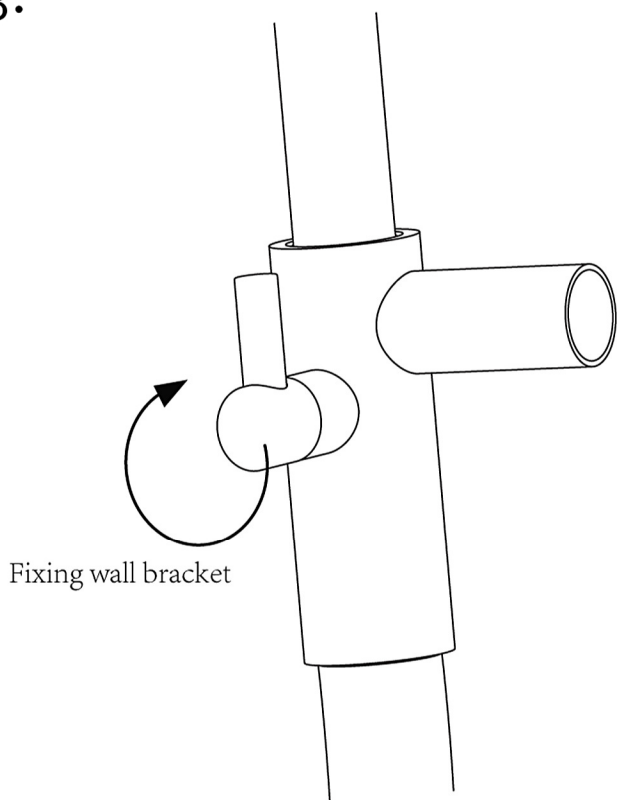
Correct water proofing must be applied.

2.



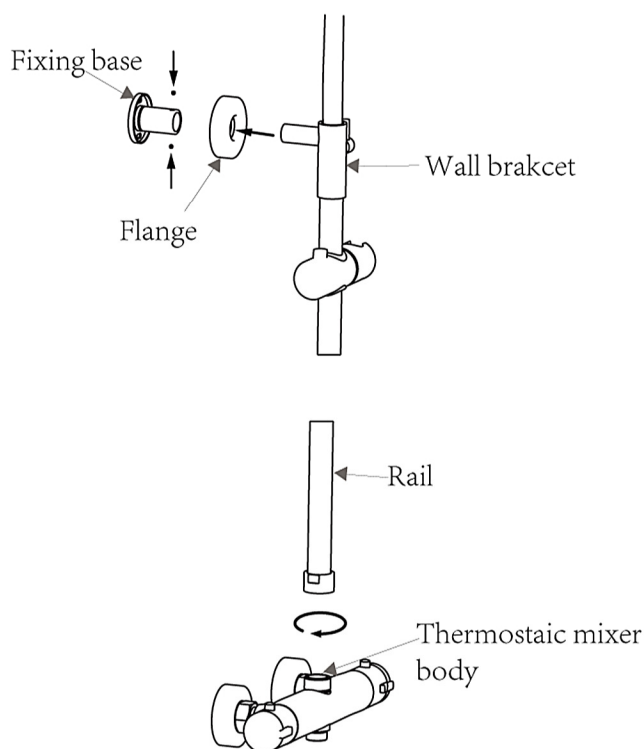
H/C water inlet recommended height of 1200mm from the floor. Install the guage and thermostaic mixer body. The wall bracket recommended height of 723 mm, fixing it with screws.

3.



Adjust the location and fixing the wal bracket.

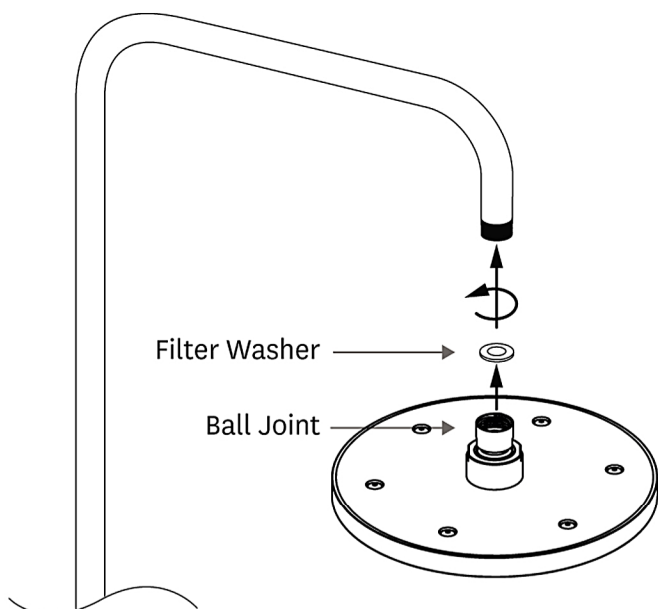
4.



Put the rail into the mixer body and tight them with screw.

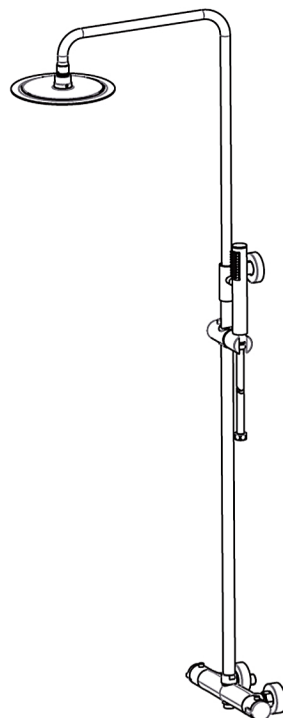
Warranty is conditional with the product being maintained in accordance with the cleaning instructions and ensuring no parts are broken or loose to prevent failure.

5.



Remove the protective cap from the showerhead ball joint and screw the unit onto the overhead arm ensuring the filter washer is in place. This arm is not adjustable.

6.



Make sure a washer is in both ends of the hose. Screw hose onto lower outlet on rail, attach handset and place firmly in holder. Tilt and rotate head to the desired position.

CLEANING

Water contains lime which remains on the surface after the water has evaporated. These lime deposits can be prevented from forming by wiping immediately after use.

To clean the chrome-plated surfaces use a soft cloth, soap and warm water. Never use cleaning agents that contain a corrosive acid or a scouring additive.



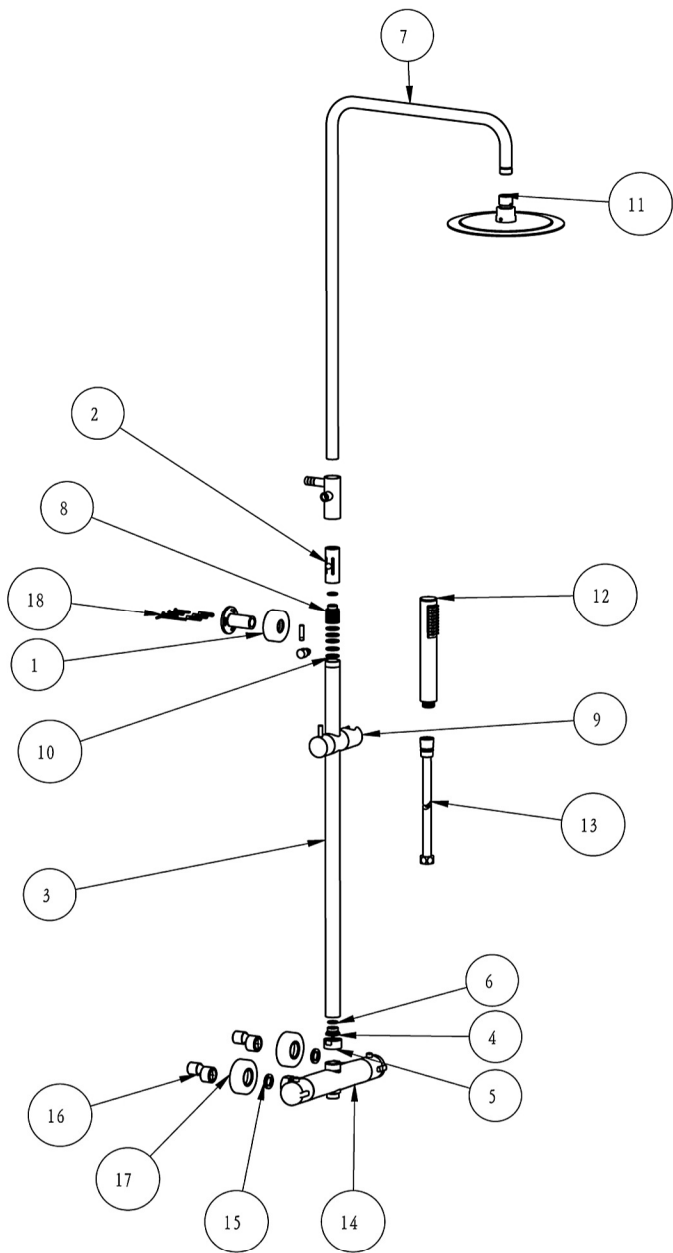
Do not use any sharp objects to clean nozzles

Clean filter washer periodically.

Warranty is conditional with the product being maintained in accordance with the cleaning instructions and ensuring no parts are broken or loose to prevent failure.

Important Installation Considerations

1. NOTE: Some showers may not provide an **effective** shower when used with gravity fed heated water systems or where pressures are less than 150kPa at the outlet. Additionally showers with flow rates of less than 9L/min may not allow the following to function correctly:
- _ some instantaneous water heaters
 - _ some tempering valves
 - _ some thermostatic mixing valves
2. Some shower heads only operate correctly when hot and cold water supplies are both mains pressure and may not be suitable for some instantaneous hot water services.
3. When water pressure is in excess of 500kPa a pressure limiting device is required



18	Parts	1
17	Flange	2
16	SS gauge	2
15	Washer	2
14	Round thermostatic body	1
13	1.5M SS Hose	1
12	Handset	1
11	Rain Shower	1
10	ϕ 22x2mm O Ring	5
9	25mm ABS Slider	1
8	Connector	1
7	Arm	1
6	ϕ 17x2mm O Ring	2
5	G3/4 nut	1
4	SS connector	1
3	Rail	1
2	Round welding tight up parts	1
1	Installation parts	1
NO.	Part Name	Qty

Warranty is conditional with the product being maintained in accordance with the cleaning instructions and ensuring no parts are broken or loose to prevent failure.



Eastbrook Road, Gloucester GL4 3DB
Technical Helpline : 01452 317890
Mon - Fri / 8am - 5pm
Email : technical@eastbrookco.com