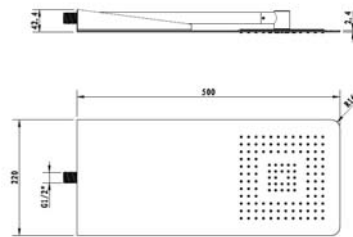


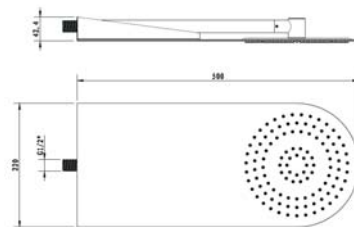
# INSTALLATION GUIDE



Dimension Drawing



Dimension Drawing



## SHOWER WALL/CEILING DRENCHER INSTALLATION GUIDE

### TECHNICAL SPECIFICATIONS

#### Operating Pressure:

Min. water pressure 35kpa

Max. water pressure 500kpa

The shower is suitable for 35kpa to 500kpa. Recommended installation of a pressure limiting valve if supply exceeds 500kpa. The shower may not be suitable for use with gravity -fed water heaters, lower and unequal pressure supply networks, instantaneous water heaters, tempering valve and thermostatic mixing valve.

#### Operating Temperature:

Max 70 °C

#### WARRANTY

Products Warranty

Domestic

5 years on manufactured components

Commercial

2 years on manufactured components

Shower will within in the stated period from invoice date & subject to proof of any faulty workmanship or material, at its option, repair or replace the faulty product or assembly to Shower satisfaction. This guarantee will not apply if any product fault is caused by improper use, improper installation

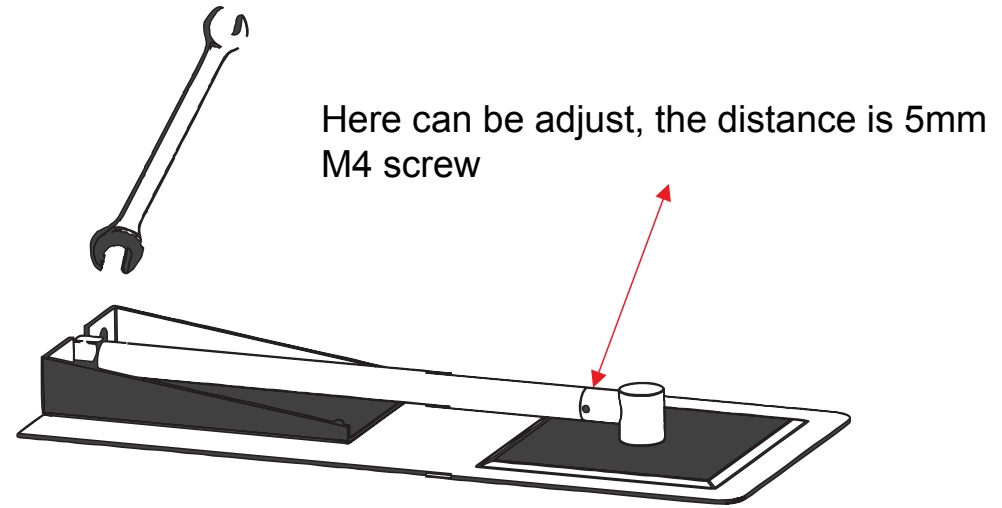
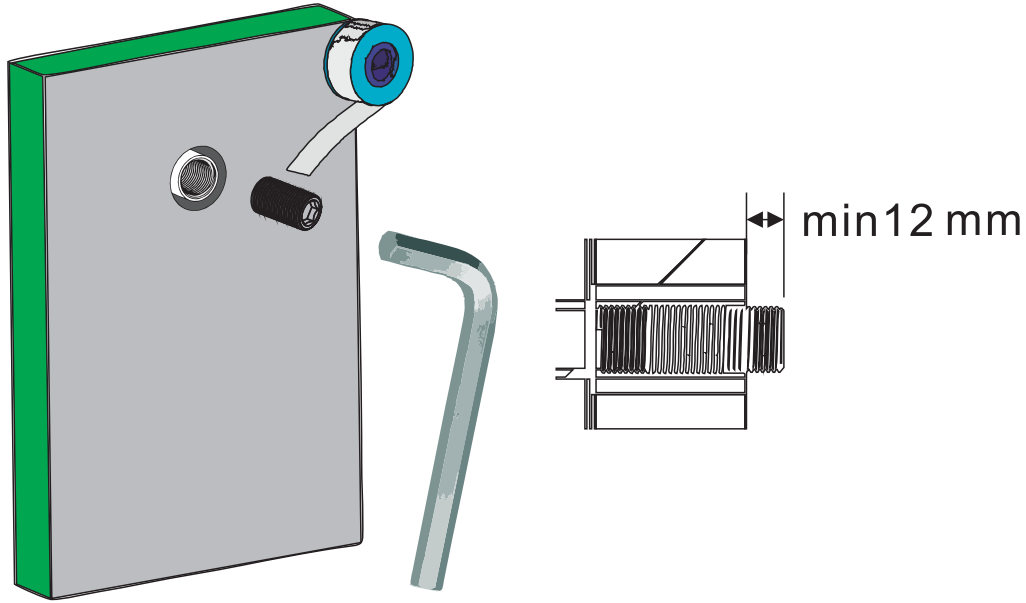
The showers conform to AS/NZS 3662 and the installation is required to be in accordance with AS/NZS 3500.1



Eastbrook

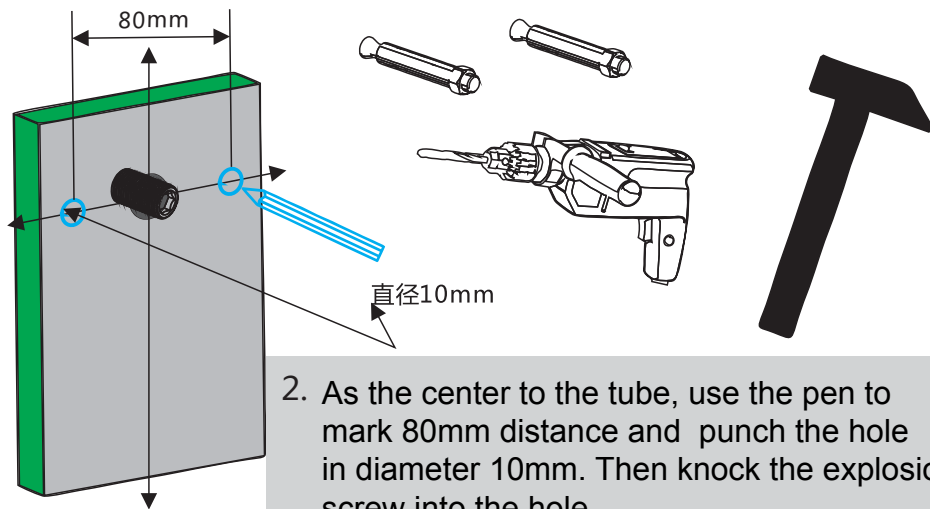
Eastbrook Road, Gloucester GL4 3DB  
Technical Helpline: 01452 317890  
email: [technical@eastbrookco.com](mailto:technical@eastbrookco.com)

Please make clean the water inlet before installation the product.



3. Install the rain shower on the wall, lock the inlet screws. Then use the explosion screw to fix it on the wall. Lock the M4 screws to make sure installation is ok.

1. Wrapped the raw cloth on male tube, use the spanner to fixed it on the wall, the distance is 12mm to 15mm.



2. As the center to the tube, use the pen to mark 80mm distance and punch the hole in diameter 10mm. Then knock the explosion screw into the hole.



3. Water testing to check if it is leaking after installation.