

DATASHEET

Image



General Information

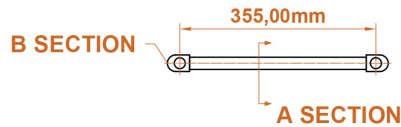
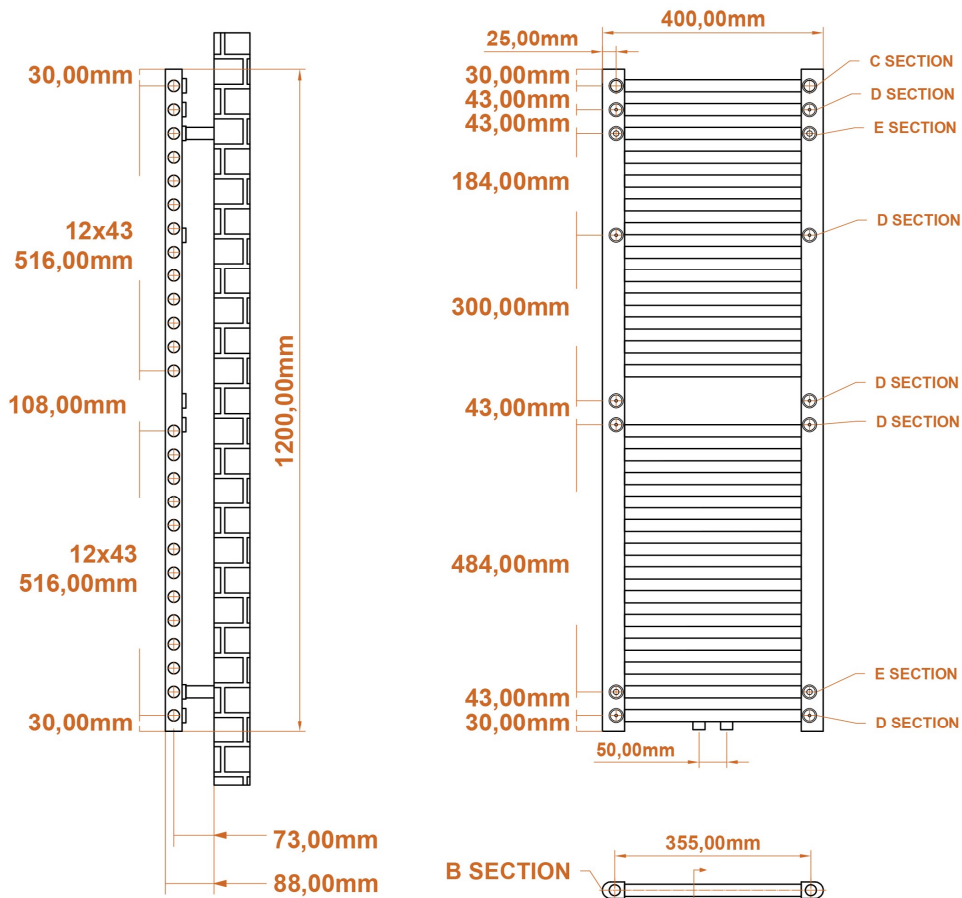
Product:	89.1480
Description:	Wingrave 1200 x 410 Flat Panel Radiator
Website Link:	(Click Here)
Product Type:	Radiator
Brand:	Eastbrook Company
Colour:	Matt Black
Material:	Mild Steel
Height (mm):	1200mm
Width (mm):	410mm
Net Weight (kg):	11.45kg
Product Range:	Wingrave Flat Panel

Product Specifications

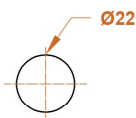
Warranty:	5 Year(s)
Supplied with fixings:	Yes
Orientation:	Vertical
BTU $\Delta T50^{\circ}\text{C}$:	1580
BTU $\Delta T60^{\circ}\text{C}$:	2023
Watts $\Delta T50^{\circ}\text{C}$:	464
Watts $\Delta T60^{\circ}\text{C}$:	593
Valve Types:	

Drawing

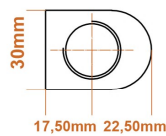
**Wingrave Flat Panel 1200 x 410mm.
 Towel Rail Technical Drawing**



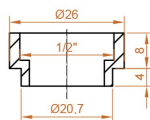
A SECTION



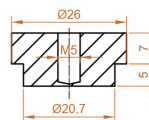
B SECTION



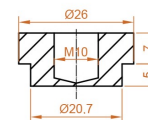
C SECTION



D SECTION



E SECTION



Eastbrook 
 Eastbrook Road, Gloucester GL4 3DB
 Technical Helpline : 01452 317890
 Mon - Fri / 8am - 5pm
 Email : technical@eastbrookco.com