

43cm MIRROR CUPBOARD INSTALLATION GUIDE

ATTENTION, READ THESE INSTRUCTIONS BEFORE PROCEEDING AND GIVE THESE INSTRUCTIONS TO THE END USER.

THIS FURNITURE MUST BE INSTALLED BY A TRAINED AND EXPERIENCED FITTER. CHECK ALL PRODUCTS CAREFULLY BEFORE FITTING. DO NOT FIT ANY DEFECTIVE PRODUCT. CONTACT TO YOUR SUPPLIER IMMEDIATELY.

THE LOCATION WHERE THIS PRODUCT IS FITTED SHOULD BE WELL VENTILATED. THIS PRODUCT IS INTENDED TO WITHSTAND NORMAL HUMIDITY FOUND IN BATHROOMS. IT MUST NEVER BE EXPOSED TO DIRECT WATER SPLASHING OR SOAKING FROM SHOWER HEADS, BATHWATER OR OTHER WATER OUTLET. ALWAYS DRY IMMEDIATELY IF THE FURNITURE IS WET. NEVER USE STRONG DETERGENTS OR ABRASIVE CLEANERS AS THESE CAN CAUSE DAMAGE. WIPE WITH A WET CLOTH AND A MILD LIQUID CLEANER.

FIX THE CARCASE TO THE WALL BEFORE FITTING THE CORNICE

TO FIT THE CARCASE – 43cm only

1. Fix the brackets supplied to the wall at the required height so that they match with the internally fitted brackets on the back of the carcase (Fig.A).
2. Place the carcase on the wall brackets. Adjust the height using a screwdriver in the slot in the internal fitting. When the height is correct, secure firmly by tightening the screws.

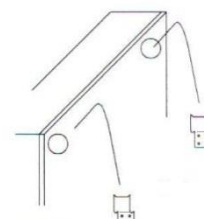


Fig. A

TO FIT THE CORNICE TO THE CARCASE

1. Fix the cornice to the top of the carcase. Leave a gap of at least 10cm between the ceiling and the top of the cornice.
2. Using the screws supplied, screw the cornice to the carcase through the pre-drilled holes either side of the interior of the top of the carcase (Fig.B). Finish with the white screw covers supplied.

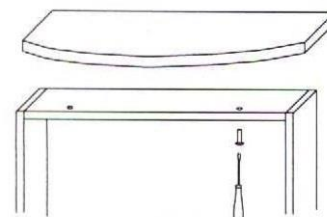


Fig. B

ELECTRICAL CONNECTION

1. Turn off power supply at the mains.
2. Connect external mirror cable to the main supply using an Electrical Standard Connector with a min. 1.5mm² section.
3. Colour code for power supply is:
 Brown Live
 Blue Neutral
 Yellow/Green Earth
4. RATING IP 54.
5. Switch main powers on again.

CHANGING BULBS OR LAMPS

1. Use only bulbs or lamps of the specified rating.
2. To change bulbs, disconnect power supply and let the bulbs cool down before changing.
3. For halogen lamps disconnect the power supply, remove protective glass and replace after changing lamp. Do not touch the quartz bulb or the inside the reflector.

WARNING

Use only a qualified electrician to fit and repair. If there is a problem contact the distributor or manufacturer.

NOTICE

The plastic cover over the fittings in the cornice is now required by European and British Standards to qualify for use in a bathroom environment. It is intended to prevent the ingress of dust sufficient to cause harm and to protect against water “splashing” (intermittent and irregular and not “jets of water”). As a result, there is now limited ventilation for the heat created by the lights and the transformers to dissipate. This product should not therefore be left illuminated for long periods (e.g. all day or all night).

THE CUPBOARD DOOR MUST NEVER BE LEFT OPEN WHEN THE LAMP IS ILLUMINATED.

NOTICE

To fit the handle be sure that the plastic ring is in contact to the mirror panel.

