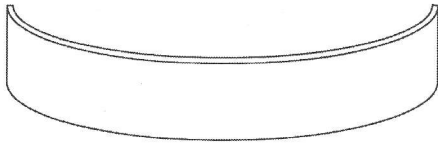

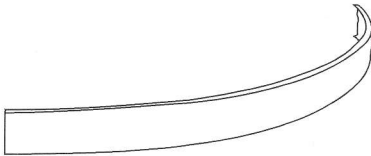
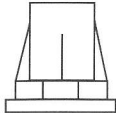
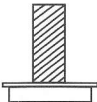
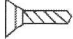
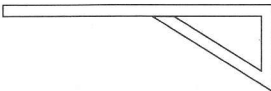
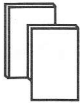
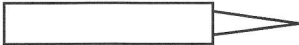

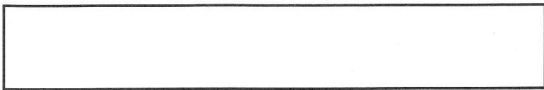


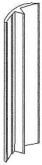
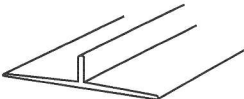
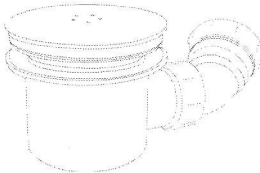
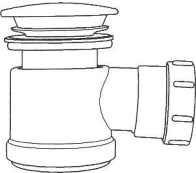
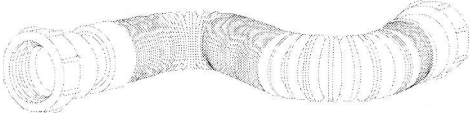


Universal Easy Plumb Kit (With Wood)

Installation Instructions

Parts Supplied

Ref	Description	Illustration	Qty
A	550mm Radius Curved Panel		1
B	1225mm Universal Straight Panels		2
C	Universal Curved Quad Panel*	 *If your tray is an Offset Quadrant you will receive one panel C.	1
D	Feet Mounting Brackets		8
E	Threaded Leg Tubes		8
F	Screws for leg mounting brackets and panel upright brackets		44
G	Panel Upright Brackets		6
H	Magnetic Strip Sets		6
I	Compound Adhesive		2
J	Baseboard with Waste Hole		1
K	Baseboard		3

L	Corner / End Brackets		3
M	Joining Brackets		2
N	Pentangle Joining Brackets		2
O	Versatile Seal Strip		2
P	High Flow Waste or Dual Waste Outlet	 OR 	1
Q	Extendable Flexi Waste Pipe		1

Before You Start:

- Please note that although these instructions are comprehensive we always recommend that a technically competent installer undertakes the installation.
- For Shower trays with one or more dimensions longer than 1200mm and up to 1700mm in length a further extension panel kit is required.
- Check the pack and make sure you have all of the parts listed and that this kit is compatible with your chosen shower tray. If not contact your supplier who will be able to help you.
- **Note! Parts may differ from that illustrated.**
- When you are ready to start, make sure that you have the right tools and materials to hand with plenty of space and a clean dry area for assembly.
- **Note! When considering fitting a shower enclosure refer to the manufactures installation instructions before fully installing the shower tray.**

Tools and Materials Required (not supplied)

- Cross-Head Screw Driver
- Hacksaw
- Jigsaw
- Sharp Knife and or Mitre Saw
- Spirit Level
- Trowel
- Plumbing pipe and fittings as necessary
- Paint Brush
- Shower Tray
- Silicone Sealant
- Tape measure
- Marker Pen Installation (Baseboards)

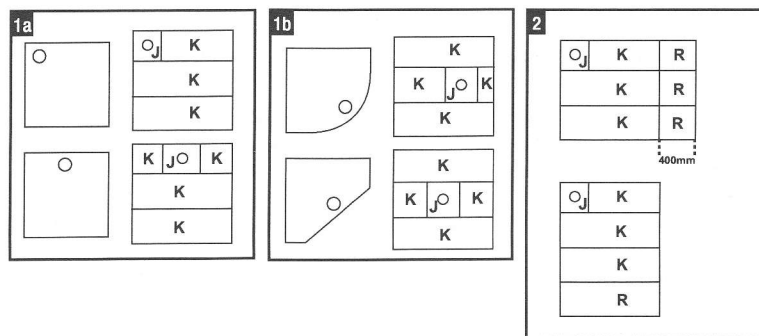
Note! The Baseboard system may be used on a wide number of different types, sizes and shapes of shower trays having an underside area level with the outer walls subject to reference to the shower tray manufacturers instructions and possible modification.

- 1 On a clear area of floor lay the two baseboards (J & K) on to the upturned shower tray, with the baseboard containing the waste hole (J) orientated to located with waste outlet on the tray by cutting baseboard (K) as required (See Fig 1a & 1b).

Note! The size and position of the waste outlet will vary to that illustrated depending on the type and shape of shower tray used.

Note! On larger shower trays using the optional extension kit, cut the additional baseboard supplied (R) in the kit into three 400mm lengths for dimension of tray up to 1700mm in length and place on the ends of the baseboards (J & K) or place four abreast for widths up to 1200mm (See Fig 2).

- 2 Lay the baseboards onto a flat surface orientated as required to (Fig 1a or 1b) and place the shower tray on top with the waste outlet locating with baseboard (J) (See Fig 3). With waste located over the baseboard (J), mark the edge of the tray onto the baseboards (J & K) with a marker pen on all sides (See Fig 4).



- 3 With the edge/edges of the tray clearly marked on the baseboards (J & K), remove the shower tray and mark a second line 30mm. From the original line (See Fig 5).

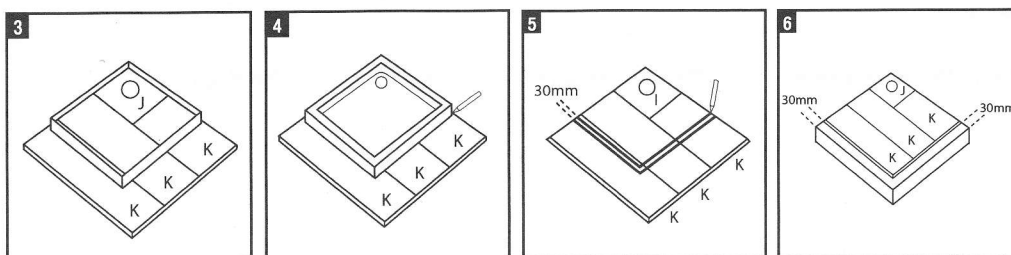
- 4 Using the second line on the baseboards (J & K) 30mm back from the original marked line (See Fig 5) carefully cut the baseboards to the new line using a jigsaw.

Note! Before proceeding dry fit the cut baseboards (J & K) to the underside of the tray to ensure correct fitting and access of the waste outlet (P) and adjust if required (See Fig 6).

- 5 With the shower tray upside down, apply the compound adhesive (I) to the baseboards (J & K) in accordance with the instructions on the cartridge and press the baseboards firmly onto the surface of the tray (See Fig 6), turn over and weight down if necessary. A tack bond should be achieved in approximately 10-20 minutes enabling installation, and a firm bond is achieved in one hour.

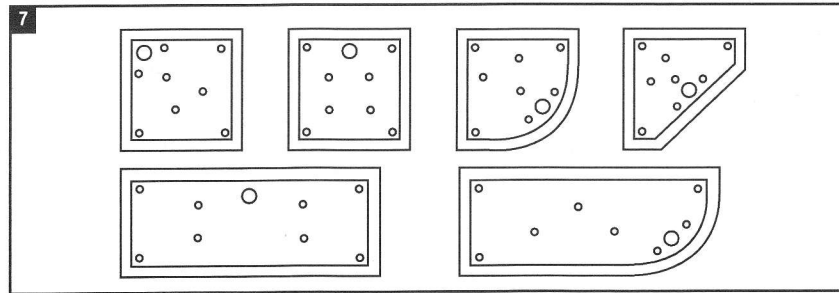
Note! On some types of shower trays with exceptionally uneven, scalloped or rough surfaces, addition compound adhesive (I) could be required this may be purchased from your supplier.

Note! It is very important on 'Cast Stone' type shower trays that a close fit is achieved i.e. NO gap should exist between the baseboards and the surface of the underside of the tray.



Installation Leg and Panel Brackets

- 1 With the shower tray upside down, fit all eight leg mounting brackets (C) (twelve with optional extension kit for trays up to 1700mm) to the baseboards (J & K) using the screws (E) to form an evenly supported structure (See Fig 7).

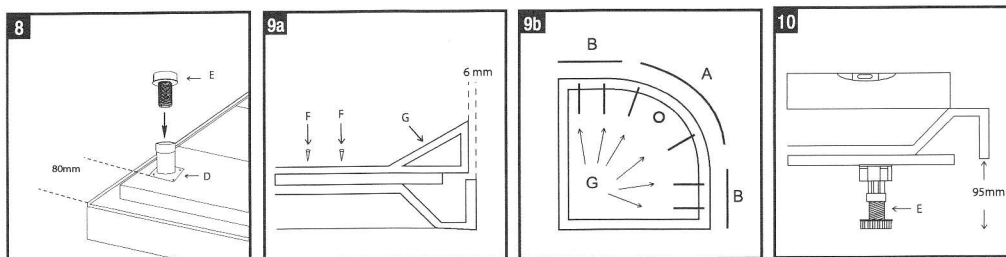


Note! The mounting brackets (C) can be position to avoid plumbing and other items but **MUST** form an evenly supported structure with the brackets (C) no closer to the edge of the tray than 80mm (See Fig 8).

- 2 Screw the threaded leg tubes (E) into the mounting brackets (D) (See Fig 8).
- 3 Screw up to six of the panel upright brackets (G) to the baseboards (J & K) using two screws (F) per bracket, evenly spaced adjacent the open / panel sides of the installation on the shape of tray being used, avoiding any other items (See Fig 9a & 9b).

Note! The panel upright brackets (F) **MUST** be 6mm from the edge of the tray (See Fig 9a).

- 4 Carefully turn the shower tray onto its feet, level and adjust the height of the tray using the threaded legs tubes (E) to accept the panels (A, B or C) nominally 95mm (See Fig 10).



Note! With the shower tray in the installed position, please ensure that your chosen enclosure is compatible with the dimensions of the tray after tiling. This is especially important if a shower tray incorporating a built in tiling upstand is being used or if choosing to recess the edge of the tray into adjacent walls.

- 5 Install the plumbing in the area in accordance with the building regulations using the extendable flexi pipe (Q) if required.
- 6 If electing to fit the optional 'Versatile Seal Strip' (O) (For use on flat top trays only), please follow instructions (on page 6) at this stage.
- 7 Attach waste outlet (P) to the shower tray and place the shower tray into position and level the tray from the top rims only using the threaded legs (E), ensuring a good fit with panels (A, B or C) (See Fig 10).
- 8 Connect waste outlet (P) to the plumbing. The shower tray and all connections **MUST** now be checked for water flow, tightness and drainage over the entire area before final installation and adjusted if required.

Note! Some types of waste outlet (P) may require slight recessing into the floor.

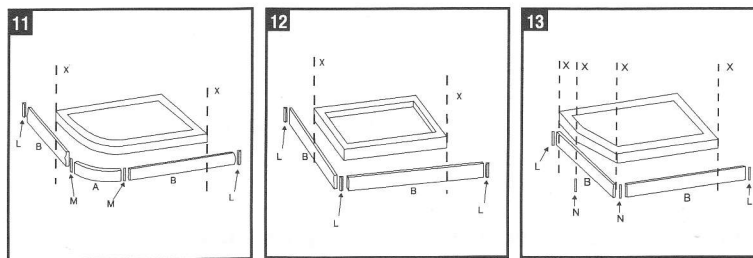
Installation Panel Options

- 1 Panels (A, B or C) should now be measured and cut using a sharp knife or mitre saw (taking great care to avoid injury), for the size and shape of shower tray being installed up to 1200mm i.e. line (X) on (Fig 11 or 12).

Note! Some panels have a protective film (indicated by a label on the surface) which must be removed now.

- 2 For shower trays greater than 1200mm up to 1700mm, use optional extension kit and install using the larger panel (S) supplied as required.
- 3 For pentangle and off set pentangle shower trays, please mitre cut the panels to suit the angle at lines (X) of the particular size of tray being installed (See Fig 13) and join using the special pentangle joining brackets (N) as shown.

Note! Test fit all panels before final assembly and ensure correct orientation to fit together as either (fig 11, 12 or 13) using joining brackets (L, M or N) as shown by removing the coloured self adhesive backing strips and attach to panels.

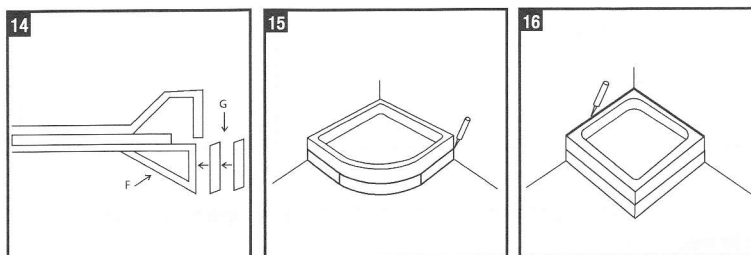


- 4 Attached the magnetic strip sets (H) to the panel upright brackets (G) by removing the self adhesive backing strips from both sides and gently pressing onto the uprights (See Fig 14) and then slide the assembled panels (A, B or C), under the shower tray.

Note! Once the panels are satisfactorily in place, these can be sealed if required along the contact points with a suitable silicone (See fig 15).

- 5 After all checks and adjustments, seal along the tiling line with a silicone (See Fig 16).

Note! Ensure that all mating surfaces are clean and free from contaminants.



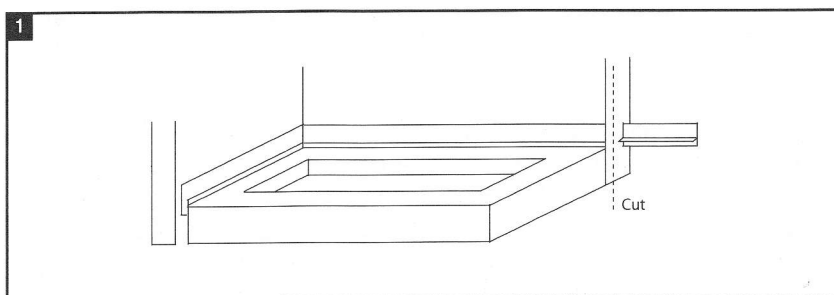
Versatile Seal Strip Installation

The Versatile Seal Strip (O) will instantly transform any flat top shower tray or bath to a tiling upstand option.

Note! This is an optional item that should be installed at a stage prior to section 7 page 4 if required.

This consists of extruded strips fitted with a mould resistant and anti bacterial cushioned seal to ensure a snug fit against both the shower tray side wall and top rim which combined with its angled design helps ensure a water-tight seal between the shower tray and the wall.

- 1 Measure the length of strips required and cut to size carefully using a sharp knife (See Fig 1).

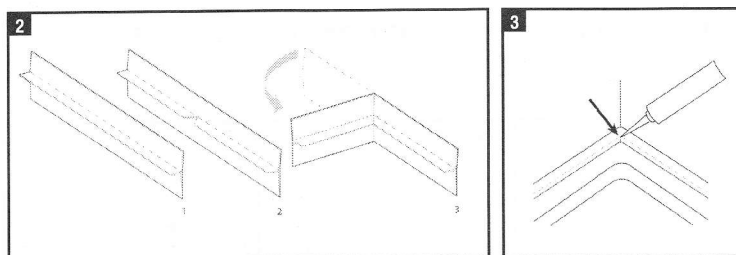


- 2 Mitre any bends or joining ends at 45° angle to form a corner joint (See Fig 2).

- 3 Clean all mating surfaces of the shower tray.

Note! Avoid spillage on visible areas as some solvents may mark the surface.

- 4 Fit the Versatile Seal Strip (O) by removing the two backing strips from the fixing tape on the strip and apply to the tray as shown (See Fig 1).
- 5 Apply a small bead of silicone on the internal mitred or jointed ends before tiling. This will ensure a waterproof seal as shown (See Fig 3).
- 6 Finally install shower tray and tile down over the seal strip to the surface.



Note! For shower trays greater than 1200mm up to 1700mm, use optional extension kit and use the larger 1700mm versatile seal strip.