

CONGRATULATIONS

You are the proud owner of an exclusive Viola Stainless Steel Towel Rail which has been specially produced by our craftsmen who would wish you to enjoy many years of satisfaction from it.

INSTALLATION

This product must be installed by a fully qualified engineer.

- Please consider using an Eastbrook Valve Set – this will ensure that your radiator looks its best with matching radiator valves.
- On commissioning, flush the central heating system thoroughly using a proprietary solution to ensure that aggressive substances such as fluxes and manufacturing residue, from which internal surfaces of your radiator can sustain irreparable damage – are removed. It is further recommended that an appropriately approved corrosion inhibitor be subsequently added to the heating system in order to protect the radiator and other parts of the central heating system to promote extended operating lifespan.

MAINTENANCE

- From time to time it is advisable to clean your towel rail with a warm damp cloth. Never use any form of abrasive cleaner or chemical.
- Corrosion inhibitor must also be regularly maintained, please consult your engineer for details.

IMPORTANT

Viola Stainless Steel Towel Rails are not suitable for use on direct central heating systems. Please consult your engineer or supplier.

WARRANTY

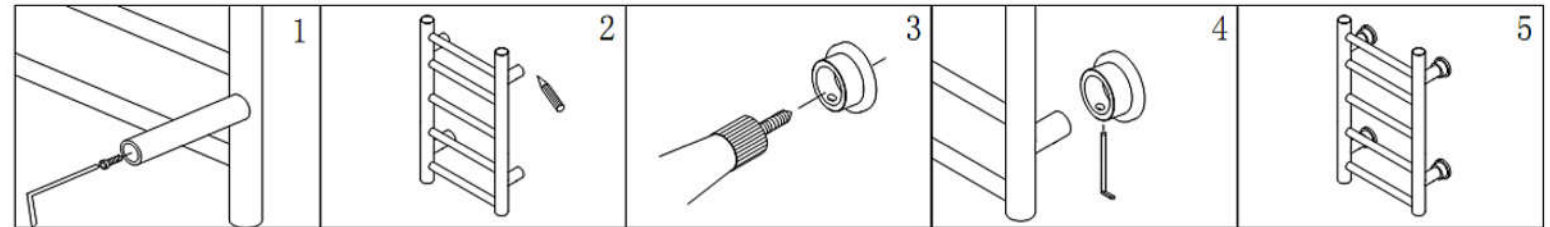
Your Viola Stainless Steel Towel Rail is fully warranted for five years in respect of defective materials and workmanship and subject to installation being carried out by a qualified engineer in accordance with good practice and corrosion inhibitors being regularly maintained.

REMEMBER Excellence is worth looking after.

ASSEMBLY INSTRUCTIONS

Warning : Eastbrook recommends that this towel rail should be installed so that the bottom of the towel rail is at least 600mm above the floor to avoid a hazard for children.

INSTALLATION



General Installation Instructions

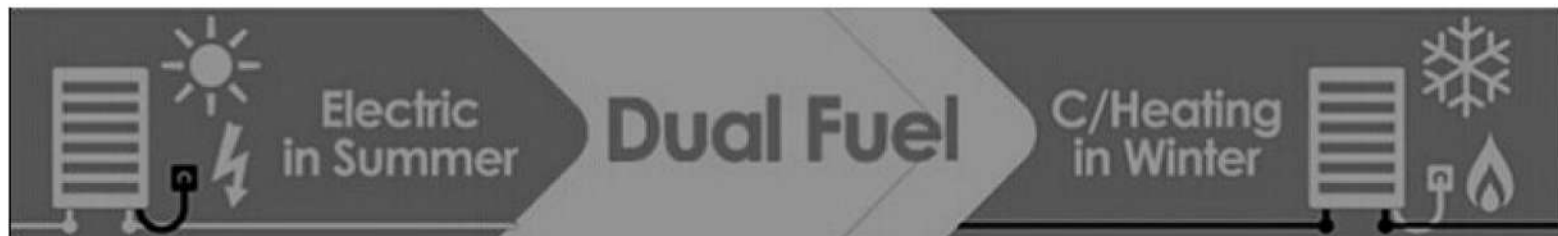
Fig.1 Screw four wall brackets on the rail.

Fig.2 Outline the shape of round legs on the wall. Mark the center of the round flanges.

Fig.3 Drill holes, insert the plastic plugs and screw the flanges back to the wall tightly.

Fig.4 Slide towel rail onto round flanges as far as it will go and tighten the grub screw and check if the rail is secure.

Fig.5 Connect towel rail to the heating system and enjoy the cosy heat.



CARE and CLEANING

Violla Stainless Steel Towel Rail is manufactured from stainless steel. The surface of the towel rail should be cleaned regularly with water and either a neutral or slightly alkaline (PH 6-9) liquid detergent (such as most soap solutions and dish washing liquids). Soap and water are usually sufficient for removing dirt, calcium and other deposits. To clean your towel rail, moisten a sponge or tea cloth with diluted detergent and wipe all the surface. Rinse repeatedly with a sponge or cloth moistened with lukewarm water. Finish by drying all surfaces. Never use abrasive cleaning implements, or abrasive or corrosive substances, or substances containing solvents, acids or ammonia for cleaning the highlight polished surfaces.

This towel rail is not intended for use by children or infirm persons unless they have been adequately supervised by a responsible person to ensure that they can use it safely. Children should be supervised to ensure that they don't play with the appliance.