

## DATASHEET

### Image



### General Information

Product:	8.016
Description:	Type A+ Element 100W
Website Link:	<a href="#">(Click Here)</a>
Product Type:	Heating Element
Brand:	Eastbrook Company
Colour:	
Material:	
Net Weight (kg):	0.6kg
Product Range:	Type A+ Element

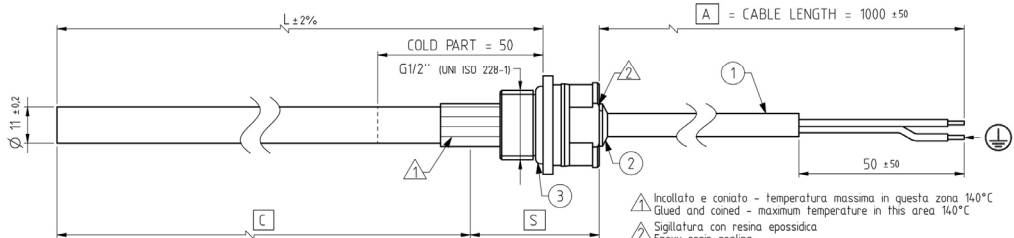
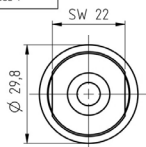
### Product Specifications

Warranty:	1 Year(s)
Orientation:	
Watts:	100
Valve Types:	

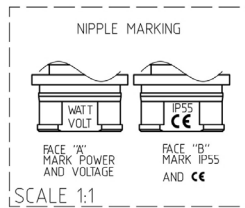
## Drawing

### Type A+ Element Technical Drawing

CLASS I INSULATION  
 ISOLAMENTO CLASSE I IP55



AREA/ZONE	°C
C	100
S	100
A	70



- Incollato e coniato - temperatura massima in questa zona 140°C  
 Glued and coned - maximum temperature in this area 140°C
- Sigillatura con resina epossidica  
 Epoxy resin sealing
- Yellow/green earth wire must be connected to the corresponding yellow/green ground wire of the electric supply.  
 Il cavo gialloverde deve essere collegato al circuito di terra dell'impianto elettrico di alimentazione.  
**THIS PRODUCT MUST BE EARTHED**

**APPLICATION AND WARNING**  
 In case of any damage to the electrical connections, the heater must be returned to the supplier or be serviced by a qualified electrician. Do not alter any of the factory fitted electrical connections. For heaters fitted without a feed plug, an isolating device ensuring disconnection from the circuit must be fitted. There must be at least 3mm between contacts in the open position. Residual current circuit breaker (RCCB) should be fitted in line with the current IEE regulations.  
 Heating element only for use with water or water plus glycol filling towel rail.  
 Maximum heating element surface temperature 100°C  
 Elemento riscaldante da utilizzarsi solo ed esclusivamente in asciugabiancherie riempiti con acqua o miscela acqua più glicole.  
 Massima temperatura superficiale di funzionamento 100°C.

NORME DI RIFERIMENTO PER COSTRUZIONE E TEST ELETTRICI CEI EN 60335-1  
 REFERENCE STANDARDS FOR CONSTRUCTION AND ELECTRICAL TESTING except par. 10.

3	O-Ring gasket	1	EPDM 17x325
2	Cable gland	1	RAL 9010 (white)
1	PVC Bipolar + Grounding Cable	1	H05VV-F3G1 section 1mm² RAL 9010 (white)
ID	Description	Qty	Informations

ASSEMBLY - THE HEATER CAN BE ASSEMBLED VERTICALLY OR HORIZONTALLY IN THE TOWEL RAIL OR RADIATOR.

**Eastbrook**   
 Eastbrook Road, Gloucester GL4 3DB  
 Technical Helpline : 01452 317890  
 Mon - Fri / 8am - 5pm  
 Email : technical@eastbrookco.com