

DATASHEET

Image



General Information

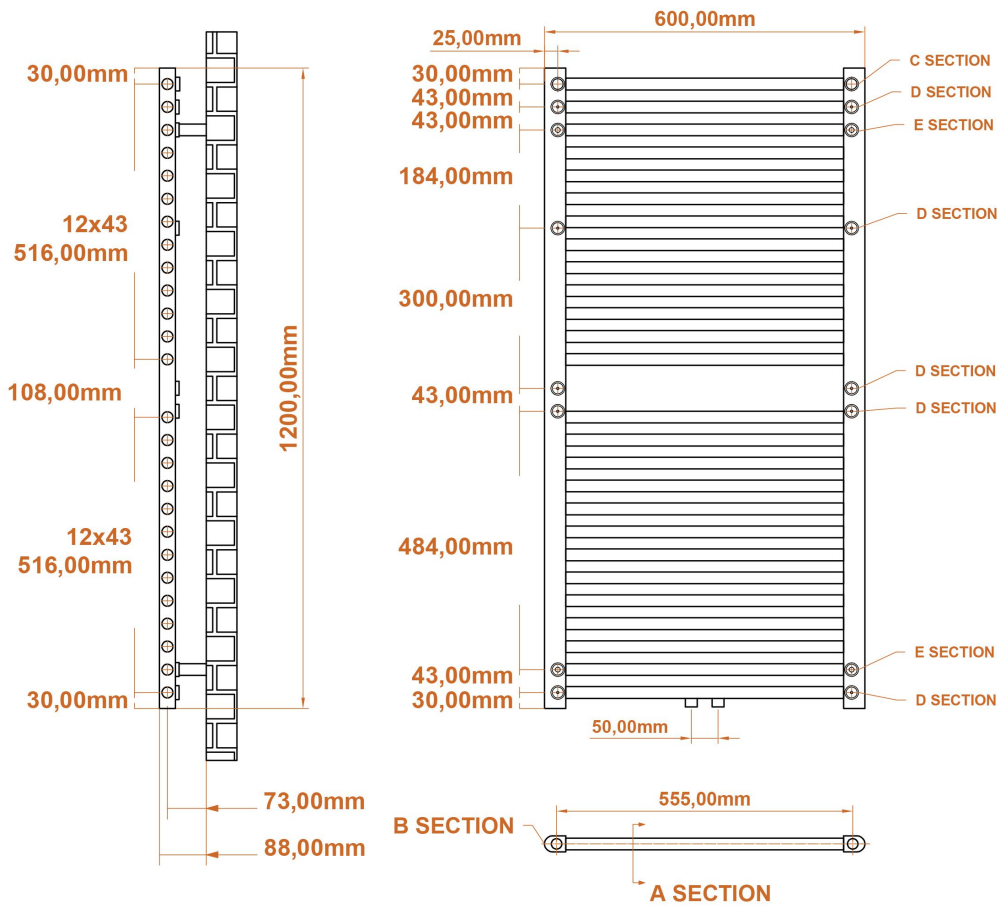
Product:	89.1470
Description:	Wingrave 1200 x 610 Flat Panel Radiator
Website Link:	(Click Here)
Product Type:	Radiator
Brand:	Eastbrook Company
Colour:	Matt Anthracite
Material:	Mild Steel
Height (mm):	1200mm
Width (mm):	610mm
Net Weight (kg):	15.35kg
Product Range:	Wingrave Flat Panel

Product Specifications

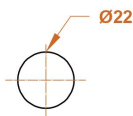
Warranty:	5 Year(s)
Supplied with fixings:	Yes
Orientation:	Vertical
BTU $\Delta T50^{\circ}\text{C}$:	2239
BTU $\Delta T60^{\circ}\text{C}$:	2866
Watts $\Delta T50^{\circ}\text{C}$:	657
Watts $\Delta T60^{\circ}\text{C}$:	840
Valve Types:	

Drawing

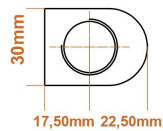
Wingrave Flat Panel 1200 x 610mm.
Towel Rail Technical Drawing



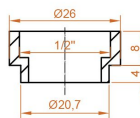
A SECTION



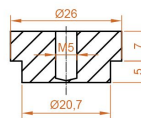
B SECTION



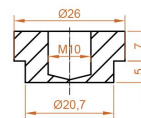
C SECTION



D SECTION



E SECTION



Eastbrook 

Eastbrook Road, Gloucester GL4 3DB
 Technical Helpline : 01452 317890
 Mon - Fri / 8am - 5pm
 Email : technical@eastbrookco.com