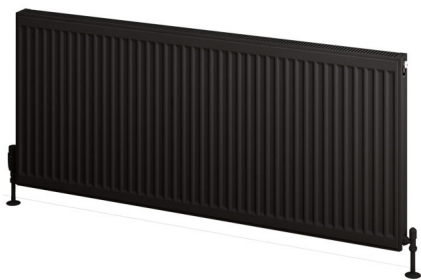


## DATASHEET

### Image



### General Information

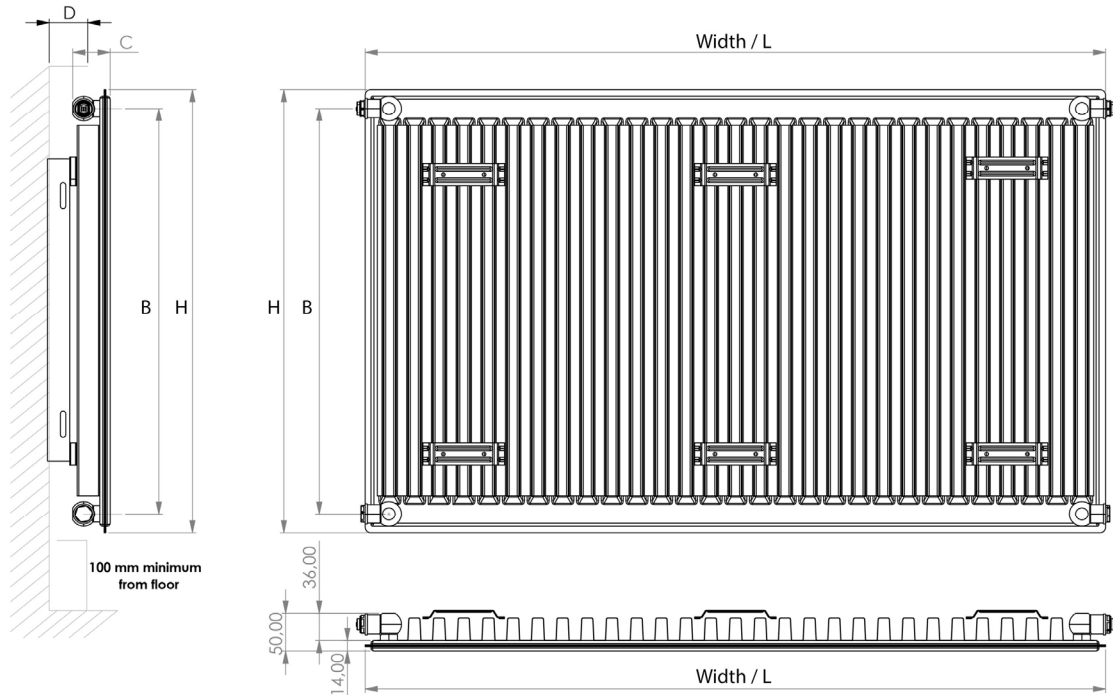
Product:	25.0075
Description:	Longden Type 11 Compact Panel Radiator 600 x 1400
Website Link:	<a href="#">(Click Here)</a>
Product Type:	Radiator
Brand:	Eastbrook Company
Colour:	Matt Black
Material:	Mild Steel
Height (mm):	600mm
Width (mm):	1400mm
Net Weight (kg):	21.26kg
Product Range:	Compact Panel

### Product Specifications

Warranty:	10 Year(s)
Supplied with fixings:	Yes
Orientation:	Horizontal
BTU $\Delta T50^{\circ}\text{C}$ :	4479
BTU $\Delta T60^{\circ}\text{C}$ :	5637
Watts $\Delta T50^{\circ}\text{C}$ :	1312
Watts $\Delta T60^{\circ}\text{C}$ :	1653

**Drawing**

**Type 11 Compact Panel Radiator**  
**Technical Drawing**



Height H (mm.)	Horizontal Tappings L (mm.)	Vertical Tappings B (mm.)	Radiator Depth C (mm.)	Tappings from Wall D (mm.)
300	W	245	50	38 / 50
400	W	345	50	38 / 50
500	W	445	50	38 / 50
600	W	545	50	38 / 50

\*Radiators have 4 tappings in total.

**Eastbrook**   
 Eastbrook Road, Gloucester GL4 3DB  
 Technical Helpline : 01452 317890  
 Mon - Fri / 8am - 5pm  
 Email : technical@eastbrookco.com