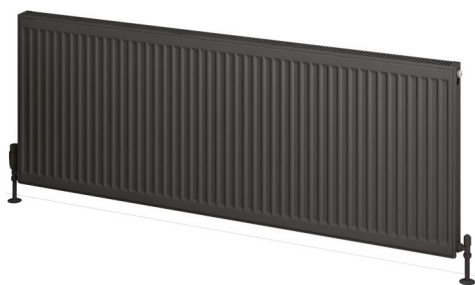


DATASHEET

Image



General Information

Product:	25.0125
Description:	Type 21 Compact Panel Radiator 600 x 1600
Website Link:	(Click Here)
Product Type:	Radiator
Brand:	Eastbrook Company
Colour:	Matt Anthracite
Material:	Mild Steel
Height (mm):	600mm
Width (mm):	1600mm
Net Weight (kg):	40.97kg
Product Range:	Compact Panel

Product Specifications

Warranty:	10 Year(s)
Supplied with fixings:	Yes
Orientation:	Horizontal
BTU $\Delta T50^{\circ}\text{C}$:	7042
BTU $\Delta T60^{\circ}\text{C}$:	8863
Watts $\Delta T50^{\circ}\text{C}$:	2063
Watts $\Delta T60^{\circ}\text{C}$:	2599

Drawing

Type 21 Compact Panel Radiator
Technical Drawing



Height H (mm.)	Horizontal Tappings L (mm.)	Vertical Tappings B (mm.)	Radiator Depth C (mm.)	Tappings from Wall D (mm.)
300	W	245	70	56 / 68
400	W	345	70	56 / 68
500	W	445	70	56 / 68
600	W	545	70	56 / 68

* Radiators have 4 tappings in total.

Eastbrook 
 Eastbrook Road, Gloucester GL4 3DB
 Technical Helpline : 01452 317890
 Mon - Fri / 8am - 5pm
 Email : technical@eastbrookco.com