

## INSTALLATION INSTRUCTIONS

|                         |                                   |
|-------------------------|-----------------------------------|
| 27.9561/27.0561/27.0571 | Belgravia 1&2TH Basin & Pedestal  |
| 27.0601/27.9601/27.0611 | Cheltenham 1&2TH Basin & Pedestal |
| 27.0341/27.9341/27.0351 | Kompact 1&2TH Basin & Pedestal    |
| 27.0831/27.0851/27.0841 | Cheverney Basin 1&2TH & Pedestal  |
| 27.0911/27.0941         | Type 55 Corner Basin 1&2TH        |
| 27.0691/27.9691/27.0681 | Tamarind 465 Basin 1&2TH          |
| 27.0661/27.9661/27.0681 | Tamarind 560 Basin 1&2TH          |
| 27.0451/27.9451/27.0461 | Tempo Basin 1&2TH & Pedestal      |

1. Place the basin on the pedestal and move into position in your bathroom. If fixing the basin to the wall please use fixing holes as shown in (Picture A)

2. Mark the positions of the pedestal and its screw holes onto the floor. Also mark the position of the basin fixing holes on the wall.

3. Now remove the basin & Pedestal. Drill pilot holes for the floor fixing screws and drill and plug the wall for basin fixing screws.

4. Adjust the water and waste pipes as necessary.

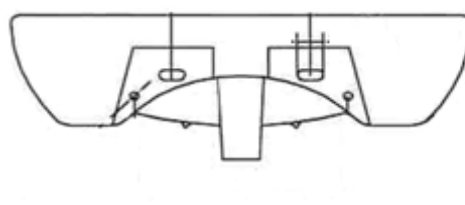
5. Reposition the pedestal and screw it into place. Don't drive the screws fully home yet.

6. Position the basin, checking that it's level (use a spirit level) and adjust if you need to. Then screw the basin to the wall.

7. Tighten the pedestal screws. Connect the waste pipe to the trap and the flexible connectors to the waste pipes.

8. Turn on the water and check for leaks. If there are leaks then check the connectors and tighten them if necessary.

**Picture A:**



**The above products are covered for 12 months warranty**