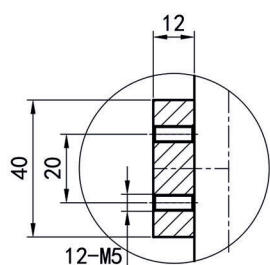
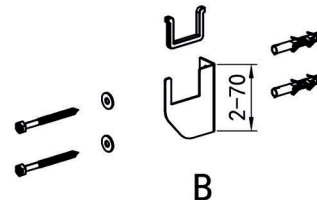
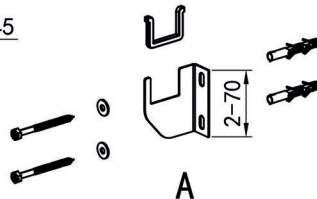
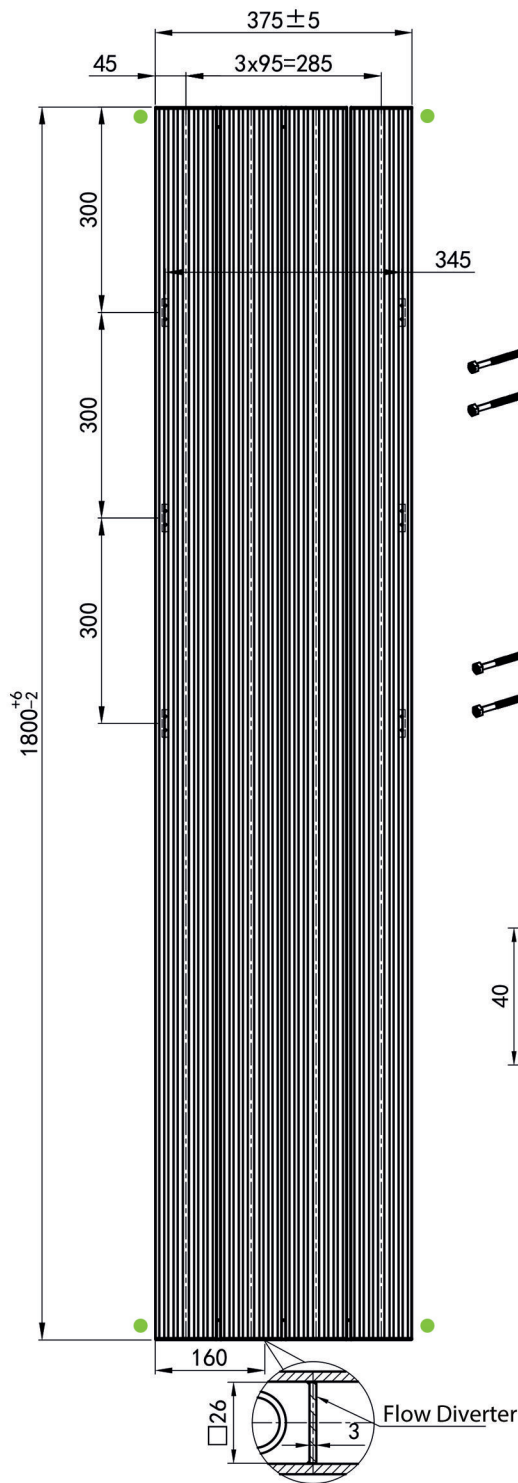


Wall fixing set includes;	
2	Left Bracket
2	Right Bracket
4	Plastic Spacer
8	Wall Screw
8	Wall Plug

MERSEY / TRENT ALUMINIUM RADIATOR INSTRUCTION MANUAL

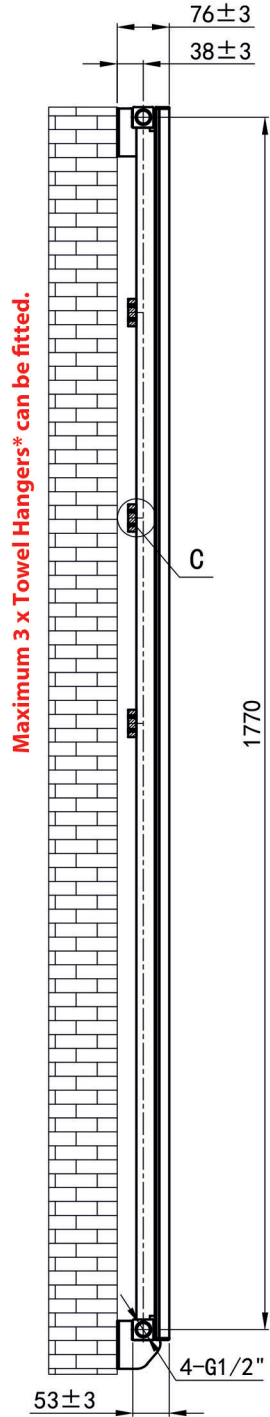
1800mm. Height

Unit: mm



C SECTION

In total there are 4 inlets in 1800mm. Height. Valve connections can be made on the left & right bottom inlets. Inlet and Outlet can be on either side. All 4 inlets are marked with green dots above.



Maximum 3 x Towel Hangers* can be fitted.

* Towel Hangers are sold separately.

IMPORTANT

Flow Diverter (blocker) comes fitted at the middle of the bottom header and can not be removed.
This radiator is **not** suitable to be used with heating elements.

IMPORTANT NOTE

Maximum working pressure is 4 bar. This radiator is to be used on Domestic Heating Systems **only**. (Not suitable for use on direct hot water systems)

INSTALLATION

- This product must be installed by a fully qualified engineer.
- Please consider using an Eastbrook Valve Set - this will ensure that your radiator looks its best with matching radiator valves.
- On commissioning, flush the central heating system thoroughly using a proprietary solution to ensure that aggressive substances such as fluxes and manufacturing residue, from which internal surfaces of your radiator can sustain irreparable damage - are removed. A specifically approved inhibitor for aluminium radiators needs to be subsequently added to the heating system in order to protect the radiator and other parts of the central heating system to promote extended operating lifespan.

Please ensure, when adding inhibitor, not to underdose or overdose and follow the inhibitor instructions. **The Ph level** of the system water should be between 6.5 and 7.5

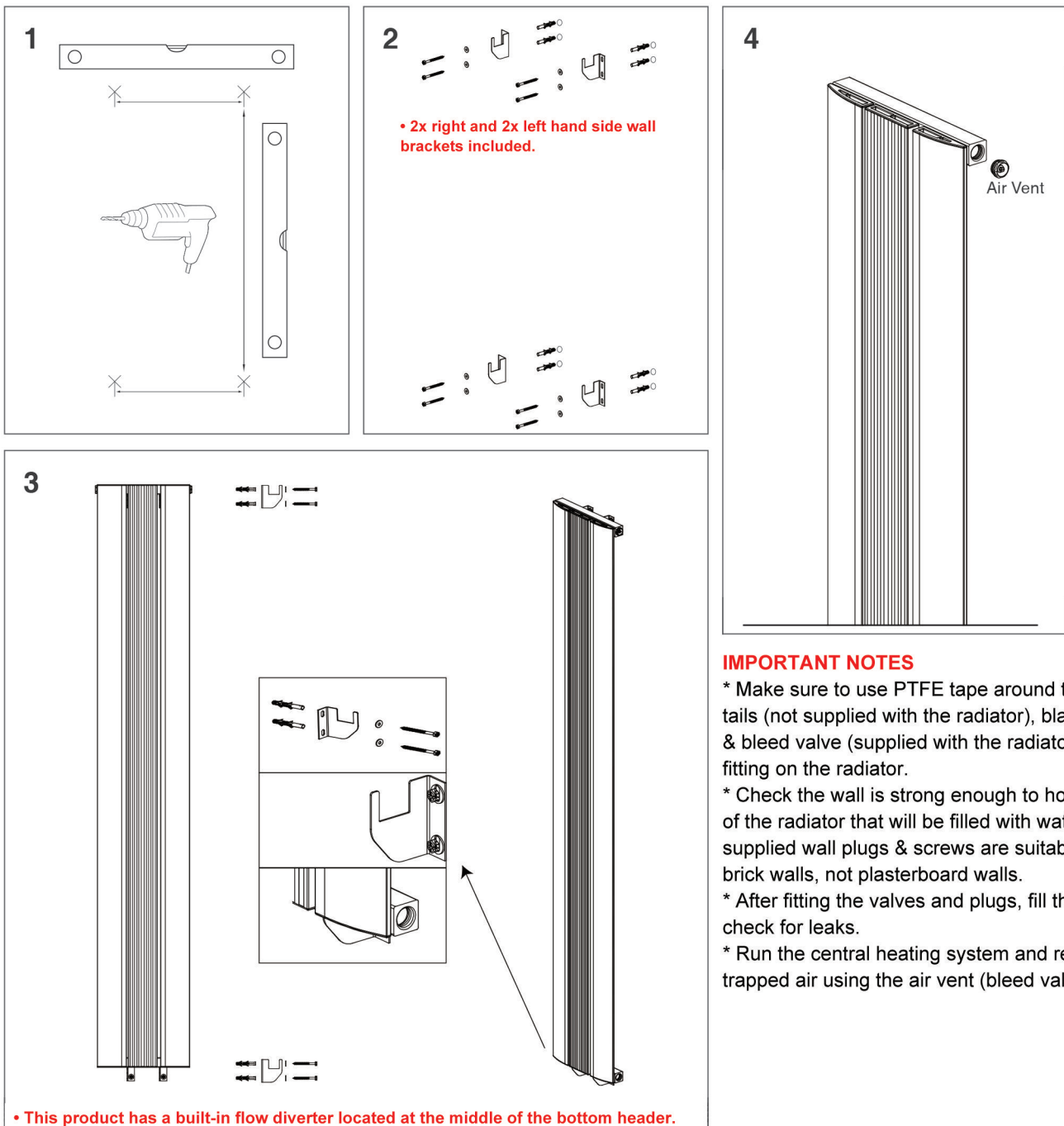
The inhibitor must not be nitrate based! Do not use softened water in your radiator! Beware of own brand inhibitors! Eastbrook recommends FERNOX F1 or equivalent inhibitor for your radiators.

MAINTENANCE

- From time to time it is advisable to clean your radiator with a warm damp cloth. Never use any form of abrasive cleaner or chemical.
- Corrosion inhibitor must also be regularly maintained, please consult your heating engineer for details.

WARRANTY

Your aluminium radiator has five years manufacturer's warranty in respect of defective materials and workmanship and subject to installation being carried out by a qualified engineer in accordance with good practice and corrosion inhibitors being regularly maintained.



IMPORTANT NOTES

- * Make sure to use PTFE tape around the valve tails (not supplied with the radiator), blanking plug & bleed valve (supplied with the radiator) before fitting on the radiator.
- * Check the wall is strong enough to hold the weight of the radiator that will be filled with water. The supplied wall plugs & screws are suitable for solid brick walls, not plasterboard walls.
- * After fitting the valves and plugs, fill the system to check for leaks.
- * Run the central heating system and release any trapped air using the air vent (bleed valve) plug.