

Eastbrook

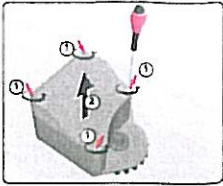
Eastbrook Road, Gloucester GL4 3DB

Technical Helpline: 01452 317890

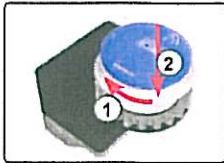
email: technical@eastbrookco.com

JOLLYTRONIC / WC TRONIC FLUSHING VALVE AND KIT INSTRUCTIONS

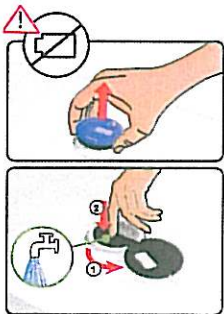
(For flushing valve only follow section 2 and section 3)



Remove battery cassette cover with a screw driver and place 4 x AA batteries into the sensor battery cassette. Replace the battery cassette cover and ensuring that the screws are in tight, so that the cover and batteries are secure.



Place the threaded tube of the sensor mechanism through the flush button hole of the cistern. Screw on the white silicon ring to the threaded tail protruding from the top of the cistern lid. Once the silicon ring is secure, place the black loose sensor plate back onto the top of the sensor and screw on the blue plastic sensor cover so that it is secure.



Should the batteries fail, you can remove the blue plastic sensor cover and black sensor plate to expose the manual override. To operate the manual override, just push the black side of the button to flush. Once the sensor and its parts are all securely in place, attach the end of the flushing valve cable clip to the button housing, next to the battery cassette on the underside of the sensor mechanism.

Tip! Ensure that the cable clip clicks onto the button housing to ensure that it is secure.

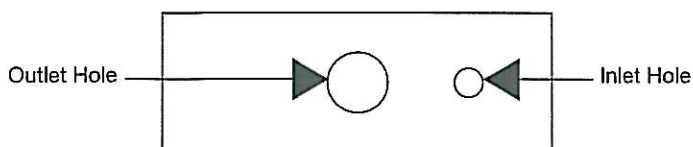


TIP! This product is designed for bottom entry cisterns only.

NB: PLEASE ENSURE THAT YOU HAVE TURNED OFF THE WATER SUPPLY TO THE TOILET, EITHER VIA AN ISOLATOR VALVE OR BY CLOSING THE WHOLE WATER SUPPLY TO THE HOUSEHOLD VIA THE MAINS STOP COCK.

Fig 1.

Top View Of Cistern

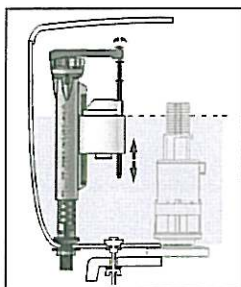


Section 1 - Inlet Valve



To fit the JOLLYFILL inlet valve, put threaded tail through cistern inlet hole (Fig 1) making sure that the washer is inside the cistern and fit back nut to the threaded tail protruding out externally from the bottom of the cistern, to secure the inlet valve. You must ensure that the mechanism is free from obstruction.

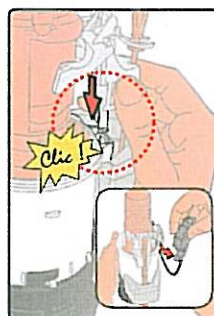
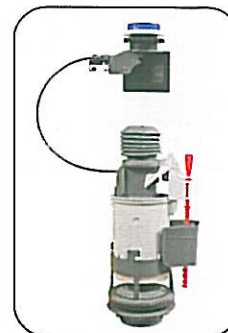
Tip! Ensure back nut is fitted tightly with the spanner enclosed, to eliminate water leakage.



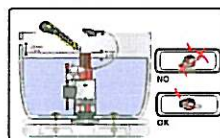
Set JOLLYFILL inlet valve to water line (the water line should be marked on the inside wall of your cistern). To do this you must lift and turn at the same time, the telescopic valve. The top of the floating cup must be at the level of the water line.

Tip! Always make sure the inlet valve is locked in place after adjustments have been made.

Section 2 - Installing the Flushing Valve



Ensure that the JOLLYFILL inlet valve has been fitted prior to fitting the flushing valve. This will ensure that you can fit the flushing valve without obstruction to the mechanisms. Place the inlet valve through the cistern outlet hole, ensuring that the washer is on the inside of the cistern (Fig 1), facing the valve so that the flushing valve mechanisms are free from obstructions and that the cable to the sensor will rest in a C shape once fitted. Once you are satisfied that the valve is going to be located in the correct manner, screw the back nut to the threaded tail protruding out externally from the bottom of the cistern, to secure the flushing valve. The back nut should be screwed hand tight initially and then a half turn with the spanner included within the kit.



Set the adjustable overflow (if it is the Jolly Tronic model as the WC Tronic does not have this function) that is fixed to the top of the flushing valve, so that it is 20 millimeters above the water line. (The water line should be marked on the inside wall of your cistern).

Section 3 - Installing the Flush Sensor



Unscrew the blue no touch flush sensor plastic cover, remove the black loose sensor plate underneath the blue plastic cover and remove the white silicon ring.

Tip! Leave these parts to one side as you will need them later.