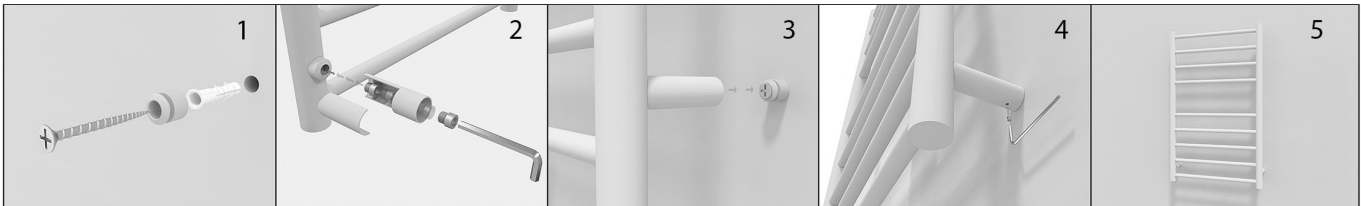


**PLEASE READ THIS INSTRUCTION THOROUGHLY BEFORE STARTING THE INSTALLATION**

- The product that you are about to install should only be used in DOMESTIC CENTRAL HEATING systems unless the size you purchased is compatible with element for electric only usage. Please consult your engineer or supplier.
- Max. Working pressure : 4 bar
- Our products are designed to be fitted by a fully qualified installer and in compliance with all relevant regulations.
- Eastbrook will not accept any liability for damage, injury or unsatisfactory performance if the product is not fitted by a fully qualified installer.

ASSEMBLY INSTRUCTIONS

Warning : Eastbrook recommends that this towel rail should be installed so that the bottom of the towel rail is at least 600mm above the floor to avoid a hazard for children.

INSTALLATION**CARE and CLEANING**

Violla Stainless Steel Towel Rail is manufactured from stainless steel. The surface of the towel rail should be cleaned regularly with water and either a neutral or slightly alkaline (PH 6-9) liquid detergent (such as most soap solutions and dish washing liquids). Soap and water are usually sufficient for removing dirt, calcium and other deposits. To clean your towel rail, moisten a sponge or tea cloth with diluted detergent and wipe all the surface. Rinse repeatedly with a sponge or cloth moistened with lukewarm water. Finish by drying all surfaces. Never use abrasive cleaning implements, or abrasive or corrosive substances, or substances containing solvents acids or ammonia for cleaning the highlight polished surfaces.

This towel rail is not intended for use by children of infirm persons unless they have been adequately supervised by a responsible person to ensure that they can use it safely. Children should be supervised to ensure that they don't play with the appliance.

- Radiator valves are not supplied with the Radiators.
- Please ensure that you wear all necessary protective equipment.
- Make sure that the CORROSION INHIBITOR is added in the system and regularly maintained for warranty.

CONGRATULATIONS

You are the proud owner of an exclusive Viola Towel Rail which has been specially produced by our craftsmen who would wish you to enjoy many years of satisfaction from it.

INSTALLATION

This product must be fitted by a fully qualified engineer.

- Please consider using an Eastbrook Valve Set – this will ensure that your radiator looks its best with matching radiator valves.
- On commissioning, flush the central heating system thoroughly using a proprietary solution to ensure that aggressive substances such as fluxes and manufacturing residue, from which internal surfaces of your radiator can sustain irreparable damage – are removed. An appropriately approved corrosion inhibitor **must** be regularly added to the heating system in order to protect the radiator and other parts of the central heating system to promote extend the operating lifespan.

MAINTENANCE

- From time to time it is advisable to clean your towel rail with a warm damp cloth. Never use any form of abrasive cleaner or chemical.
- Corrosion inhibitor must also be regularly maintained, please consult your engineer for details.

IMPORTANT

- Maximum working pressure of this radiator is 4 bar.
- This radiator is suitable for use on direct and in-direct hot water systems. Please consult your engineer or supplier.

WARRANTY

Your Viola Towel Rail is fully warrantied for **five years** in respect of defective materials and workmanship and subject to installation being carried out by a qualified engineer in accordance with good practice and corrosion inhibitors being regularly maintained.

REMEMBER Excellence is worth looking after.