

SORRENTO WALL HUNG

READ THESE INSTRUCTIONS BEFORE PROCEEDING AND GIVE THESE INSTRUCTIONS TO THE END USER.

THIS FURNITURE MUST BE INSTALLED BY A TRAINED FITTER WHO HAS EXPERIENCE OF FITTING FURNITURE IN BATHROOMS.

CHECK ALL PRODUCTS CAREFULLY BEFORE FITTING. DO NOT FIT ANY DEFECTIVE OR DAMAGED PRODUCT. CONTACT YOUR SUPPLIER IMMEDIATELY.

THE LOCATION WHERE THE FURNITURE IS FITTED SHOULD BE WELL VENTILATED. THIS FURNITURE IS INTENDED TO WITHSTAND NORMAL HUMIDITY FOUND IN BATHROOMS. IT MUST NEVER BE EXPOSED TO DIRECT WATER SPLASHING OR SOAKING FROM SHOWER HEADS, BATHWATER OR OTHER WATER OUTLET. ALWAYS DRY IMMEDIATELY IF THE FURNITURE IS WET.

DO NOT COMPRESS OR BUTT-UP ANY CARCASE TO A WALL OR OTHER OBJECT AS THIS CAN ADVERSELY AFFECT THE DOORS AND CAN CAUSE STRESS CRACKS IN THE LACQUER FINISH.

ANY CUT EDGES MUST BE EFFECTIVELY RE-SEALED TO AVOID DAMP PENETRATION. FAILURE TO DO THIS WILL NULLIFY THE GUARANTEE.

NEVER USE STRONG DETERGENTS OR ABRASIVE CLEANERS AS THESE CAN CAUSE DAMAGE. WIPE WITH A WET CLOTH AND A MILD LIQUID CLEANER.

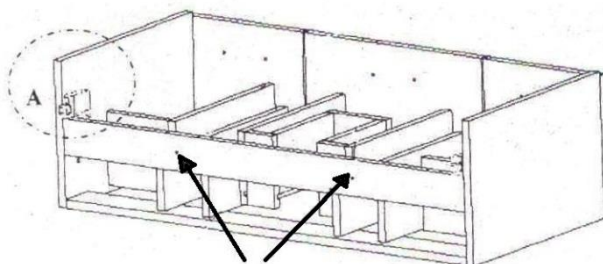
NARROW DEPTH UNITS MUST BE SECURED BACK TO THE WALL. DO NOT TRY TO FIT ANY TOP TO THESE UNITS UNTIL THEY ARE PROPERLY FIXED AND SECURE.

WHERE BASINS ARE FITTED TO THE FURNITURE, THE SURFACES BETWEEN THE BASIN AND THE TOP OF THE FURNITURE MUST BE COMPLETELY SEALED WITH SILICONE.

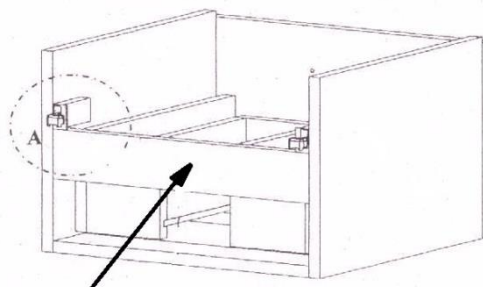
Adjustable wall fixings are already fitted to the carcass. Fix the wall brackets supplied to the wall at the required height so that they match the fixings on the carcass.

Adjust the level when fitted. For lateral stability, the carcass must then always be fixed back to the wall through the holes shown in the diagram (Fitting Holes) with the screws provided. There are two holes for the 100cm model and 1 hole for other models.

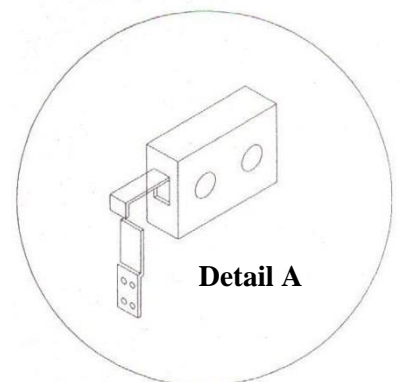
Ceramic basins (with or without furniture) must always be secured to the wall independently with the fixings provided.



Fitting Holes for 100cm Model



Fitting Hole for other Models



Detail A