

# Twin Thermostatic Radiator Valve (TRV)

## 54.0012 - 54.0013 - 54.0014 - 54.0015



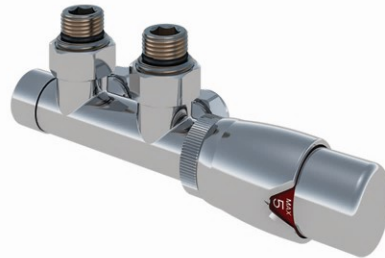
**54.0012**



**54.0013**



**54.0014**

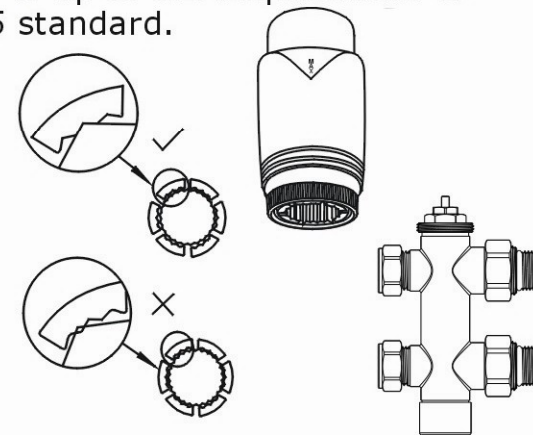


**54.0015**

Thermostatic valves are typically used for regulating the fluid flow to the radiators of central heating systems. They are provided with a regulating element which automatically controls the opening of the valve to keep the ambient temperature of the room where they are installed constant at the set value. The number on the valve corresponds to a specific air temperature. Once you have selected a number, the thermostatic valve will maintain this temperature. This prevents unwanted temperature rises and achieves considerable energy savings. The quality is up to the requirement of EN 215 standard.

### TECHNICAL SPECIFICATION:

- With thermostatic head and reversible bi-directional body.
- Built-in sensor with liquid-filled element
- Graduated scale from 0 to 5 corresponding to temperature setting ranges from 7°C - 32°C with frost protection setting as well (As per Figure below)
- Fully tested to 10 bar
- Max pressure difference: 0.8 Bar
- Nominal flow rate 173kgs/h
- Max flow temperature 120 °C
- Can be mounted horizontally or vertically



*	1	2	3	4	5
7°C	11°C-13°C	15°C-17°C	19°C-21°C	23°C-25°C	27°C-29°C

**NOTE: Read all instructions before commencing work. All work should be carried out by a professional person.**