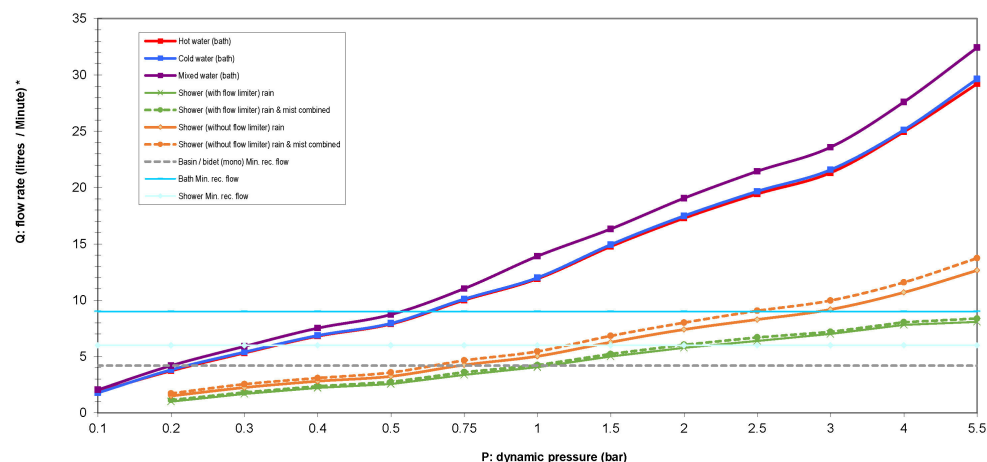


After Installation:

Once you have visually checked the new fittings and connections, ensure that all taps and drains are closed except the new product which should be **left open**. Turn on (reconnect) the water supplies, check carefully for leaks around the installation and product function. Once you are sure of no leaks, close the new product and recheck for leaks, turn on the water heating power.

Clean and dry the product of any marks from installation then cover the product with the bag provided to protect it until use.

Flow Graph:



Important Technical Data

Minimum operating pressure (Bath): 0.75 bar
Minimum operating pressure (Shower): 1.4 bar (without limiter)
Maximum operating pressure: 5.5 bar*

Flow characteristics: Single flow
Maximum hot water temperature: 60°C*
Recommended hot water temperature: 46°C

*If these temperatures or pressures are exceeded, even for short periods, damage can result and will void your warranty. In these instances, reduce the incoming water temperature and or install a pressure reducing valve. Ensure that your Abode product is fitted in accordance with Local Water Byelaws or regulations by a qualified installer. These installation guidelines have been prepared for your direction and you must exercise due care at all times. We do not accept responsibility for problems that may occur through improper installation. Whilst installing the product take care not to accidentally loosen any screwed assemblies.

Manufacturers Product Reference: AB2824, AB2834, AB2844

©Abode - 03/2024

Unit L, Zenith Park, Whaley Road, Barnsley, S75 1HT
Tel: (+44) 01226 283434 or www.abodedesigns.co.uk

All errors and omissions excepted.

abode

Aquip Bath Shower Mixer

abode



Warranty:

All Abode products are made using the highest quality materials and components, to ensure that they meet or exceed all UK or European Standards.

All products are thoroughly tested, and quality checked.

All products are backed with a comprehensive warranty and we are confident that they will give many years of trouble-free service.

The warranty applies to products used for normal domestic purposes and where the installation, care and maintenance instructions have been observed.

The warranty extends to the original purchaser only.

Details of Warranty duration and Terms & Conditions for each product type can be found on our website (www.abodedesigns.co.uk).

Important Care Instructions for your Product:

To maintain the appearance of this product, ensure that it is regularly cleaned only using a clean, soft damp cloth. A solution of warm water and a mild liquid detergent may be used where necessary, and then the fitting rinsed thoroughly and wiped dry. Any other cleaning action or use of common domestic cleaning products will invalidate your warranty.

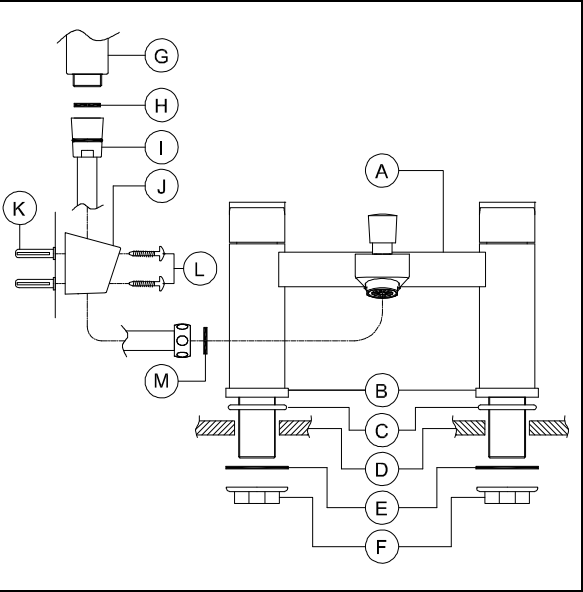
If the product has a plastic aerator insert at the end of the spout it should be unscrewed and the plastic internal insert only removed and cleaned or descaled to maintain flow performance. Do not use descaling solution on any decorative metal housing, rinse the insert thoroughly before reattaching in the reverse order.

Abrasive cleaners, scouring cleaners and acidic cleaners **must not be used on this product** under any circumstances. Avoid contact with all solvents (including chlorinated solvents, ketones or acetones as these may result in surface deterioration or etching). Also avoid contact with any harsh household chemicals such as oven cleaners, drain cleaners, rust removers, paint strippers and toilet bowl cleaners, bar keepers friend or Brasso.

Please leave these instructions for your customer.

Parts and Contents:

Key	Description	Qty
A	Bath mixer	1
B	Base plinth	2
C	Upper seal	2
D	Bath	0
E	Lower seal	2
F	Fixing nut	2
G	Hand shower	1
H	½" washer or 8lpm limiter	1
I	Shower hose	1
J	Wall bracket	1
K	Wall plug	2
L	Screw	2
M	½" seal	1



Installation Instructions:

Preparation

Before installing the new product it is essential that you thoroughly flush through the supply pipes in order to remove any remaining solder, swarf or impurities from your system. Failure to carry out this simple procedure could cause problems or damage to the workings of the product or reduce performance invalidating the warranty.

We strongly recommend best practice of installing particle filters and isolation valves to both the hot and cold feed pipes in an accessible position. This will help to prevent premature failure of the valves and ease any future maintenance.

All parts should be removed from their packaging and inspected for any transport damage prior to installation.

Shut off (isolate) your hot and cold water supply locally at the point of installation before continuing with the installation. If the water cannot be isolated locally the turn off the mains stopcock and power to any heating system, now open the lowest tap or drain point in the system until both hot and cold supplies are fully drained.

This product requires a 28 - 35mmØ tap hole at 180mm centres, the tap hole area should be free from dirt and sealant.

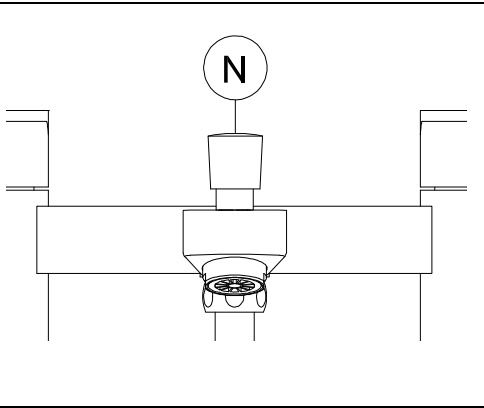
If the handles on the product operate backwards and forwards, allow for this when planning the bath or tap hole position. Loosely position the product and fittings to check if any alteration to the existing pipework is required, if needed, do this now.

If the product is single flow (see section important technical data “flow characteristics”) then non return (check) valves must be installed to comply with regulations. Some products are supplied with non-return valves this will be noted in the instructions.

Installation:

- Place the base plinths (B) onto the base of the tap (A).
 - Place the upper seals (C) onto the base of the base plinths (B).
 - Place the tap (A), base plinths (B) and upper seals (C) onto the bath (D).
 - Pass lower seals (E) over the ¾" inlets, flush to the underside of the bath.
 - Hand tighten the supplied fixing nuts (F) onto the inlets to hold the tap loosely.
 - Ensure all parts are central to the bath holes (D) and will create a seal. With the product correctly positioned tighten the fixing nuts (F) fully using an adjustable basin spanner or similar.
 - Connect the hot and cold feed pipes to inlets using the appropriate sized 3/4" fittings (not supplied).
 - Screw the long conical nut on shower hose (I) to the showerhead (G) using ½" seal (H).
- Note: ½" washer (H) can be replaced with supplied 8lpm limiter (see graph to make sure you have sufficient pressure). Make sure small black O-ring inside limiter is facing downwards (towards water flow) when placing inside the shower nut (I).**
- Screw the shower hose (I) to the ½" outlet on mixer (A) as shown using ½" rubber washer (M).
 - Rough out the position of the wall bracket (J) and mark through the screw holes on the wall using a pencil, ensure that bracket (J) is straight and located where the showerhose (I) will reach.
 - Drill the marked holes and insert wall plugs (K). Alternate plugs and screws may be required depending on the wall type.
 - Attach the wall bracket (J) using screws (L), take care not to overtighten the screws to avoid damaging bracket (J).

Using the product



The diverter knob (N) on this product has a low pressure turn lock function.

Simply lift diverter knob (N) upwards and twist 90° clockwise to lock in position when operating the shower function at lower pressures.

Turn the lock anti-clockwise to return to bath filling