

Installation Instructions

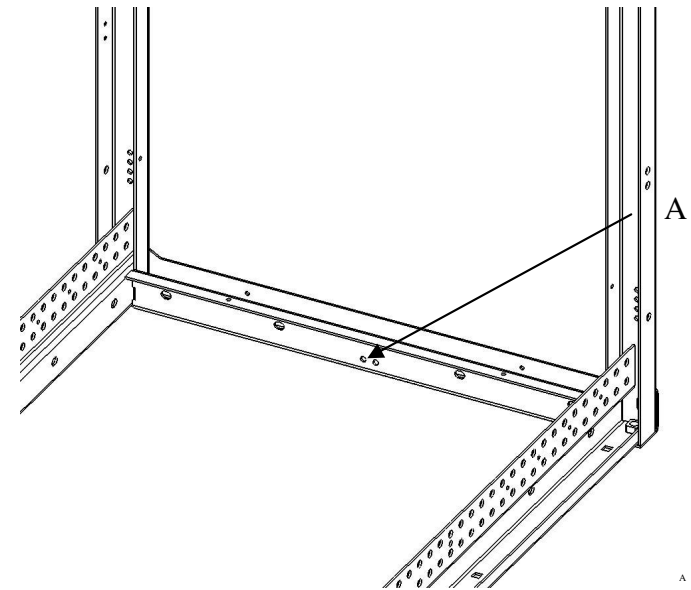
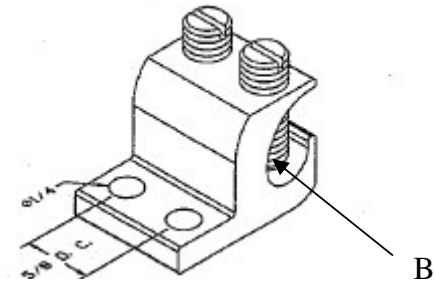
TERAFRAME GROUND TERMINAL BLOCK

Parts List

- 1 Terminal Block, Ground, 2 MTG Holes
- 2 SCR, PH, M6X x 1.0 – 16, COMB
- 2 NUT M6, HEX, NYL STL, ZN

Assembly Sequence

1. Locate the mounting surface inside of lower front or back door frame member. (See A).
2. Remove paint mask sticker on inside of frame member, uncovering two grounding holes.
3. Apply a generous coating of gray antioxidant over bare metal.
4. Mount block (See B) to surface using appropriate hardware, two M6 screws, and two M6 nuts.
5. Insert ground conductor in terminal block, and secure using 48 inch pounds of torque.



CHATSWORTH PRODUCTS, INC.

IIS-734610, 09/07/06, Rev. 1, CPI/V. HARDIN

800-834-4969 • techsupport@chatsworth.com • www.chatsworth.com

This drawing contains information proprietary to Chatsworth Products, Inc. Any reproduction, disclosure or use of this drawing is expressly forbidden except as agreed to in writing by Chatsworth Products, Inc.