



Oberon Wireless Mounting Solutions



Wireless Mounting Solutions by Oberon

Wireless equipment is challenging to install and maintain in building systems, because it must be placed to optimize network performance and the equipment change regularly.

Oberon can help in:

Commercial Property – to elevate the aesthetic by blending wireless solutions into the space

Healthcare – to address infection control procedures, patient safety and environmental concerns

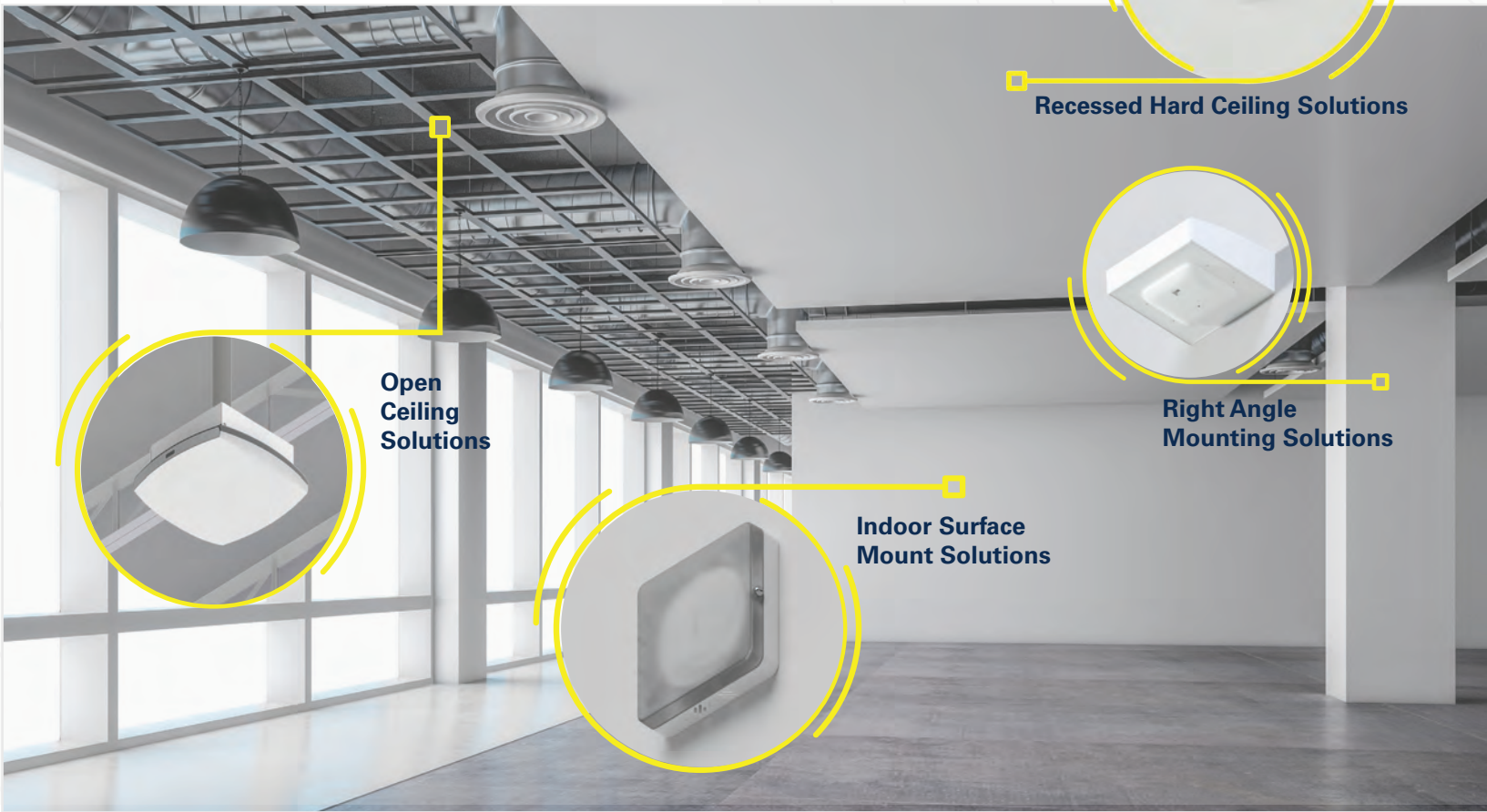
Education – to physically secure equipment in common spaces

Warehouse/Industrial/Retail – to adapt to high open ceilings, pathways for vehicles and moving equipment, and continuous floor plan changes

Airports and Stations – to address the complex layout of multiple level transitions, high and low ceilings, long narrow walkways in terminal spaces

Public Venues – to address the unique requirements of each facility, indoor/outdoor, overhead, under seating, along passageways, and in common spaces

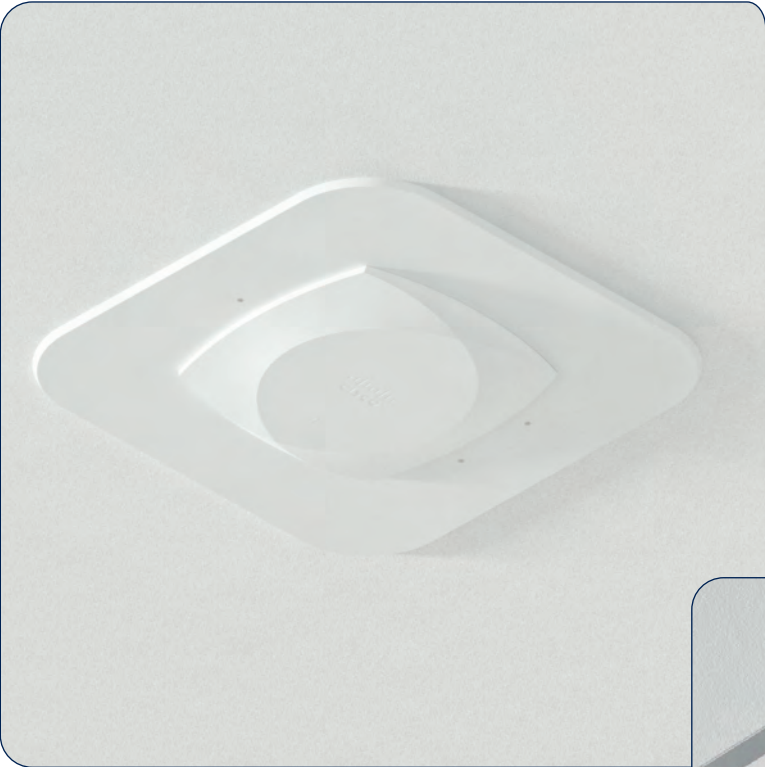
Oberon develops wireless mounting solutions that attach to each type of building system.



Application	Oberon Models	Page(s)
Suspended Ceiling Solutions	1440, 1444, 1047, 1074	6-7
Recessed Hard Ceiling Solutions	1442, 1443, 1075	8-9
Recessed Wall Solutions	1018, 1019	9
Open Ceiling Solutions	1008, 900-HC, 905	10-11
Warehouse and Industrial Solutions	1312	11
Right Angle Mounting Solutions	1008, 1006, 1011, 1007	12-13
Directional Mounts	1013	13
Surface Mounting Solutions	905, 1014, 1015, 1016	14-15
Environmental and NEMA Solutions	1020, 1021, 1022, 1024, 1026, 3001	16-18
Large Venue Solutions	3009	18
Wireless Bollards	3032, 3033, 3036	19

Why Oberon?

Oberon is focused specifically on the design of mounting solutions for wireless equipment.



- ✓ *Wi-Fi Access Points*
- ✓ *Distributed Antenna Systems*
- ✓ *Healthcare Telemetry*
- ✓ *5G Small Cells*
- ✓ *IoT Gateways*

- Oberon designs focus on:**
- Optimizing wireless coverage
 - Ease of building installation
 - Ease of attachment of wireless equipment
 - Ease of upgrade when wireless equipment changes
 - Options for physical security
 - Options for aesthetics
 - Options for wet and dirty environments



Oberon partners with the industry leaders in wireless technology to create mounting systems that simplify attachment of wireless equipment to building structure and future technology changes.



Oberon Solutions include a range of enclosures with access point-specific doors and trims and mounts that include general attachment points for wireless equipment.



AP-specific trims and doors



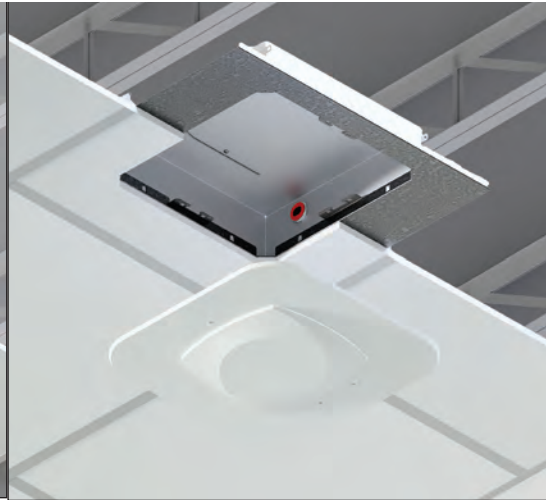
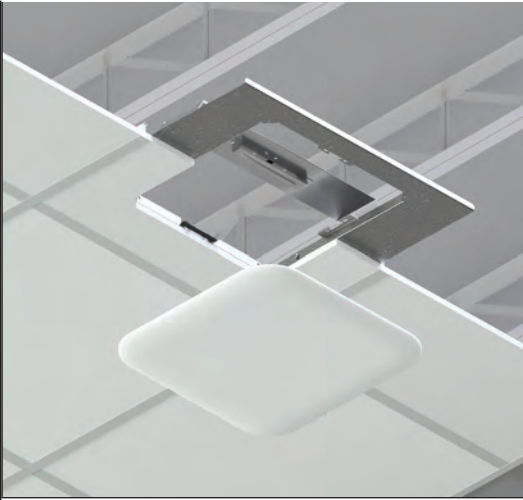
Direct attachment points for enterprise access points

This brochure provides an overview of solutions, organized into tables for quick comparison by building attachment method.



Suspended Ceiling Solutions

Modify or replace a ceiling tile to create a space above the suspended ceiling for your access points and associated network connections.

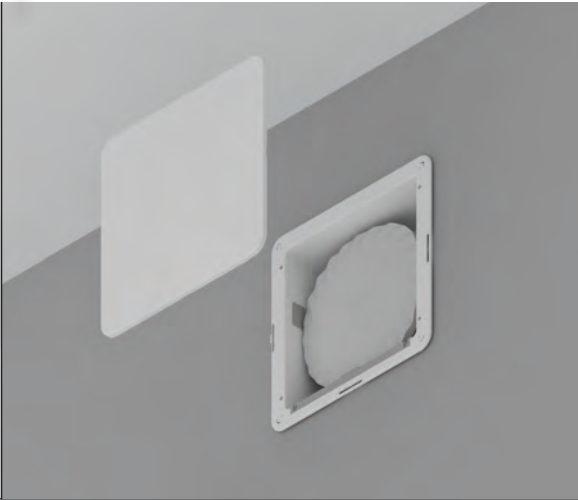
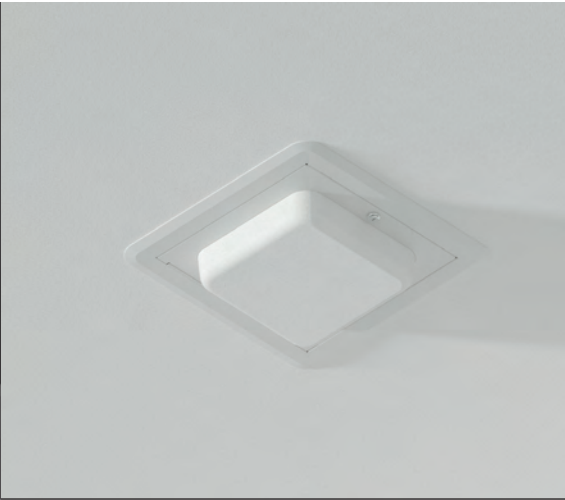
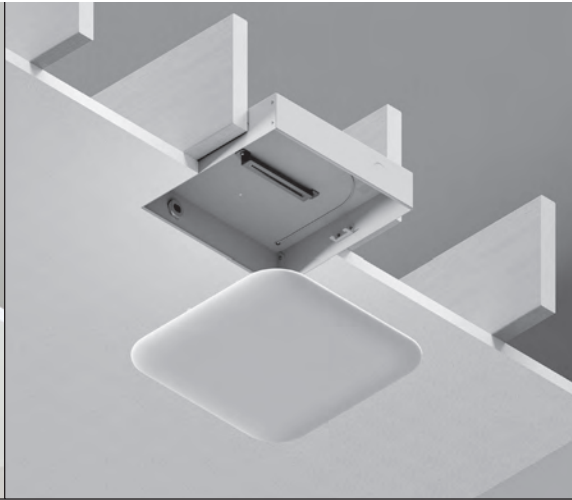


	In-Plane 1440	In-Plane 1444	Wi-Tile® 1047	Wi-Tile® 1047	Wi-Tile® 1074
Description	Basic Mounting Bracket with Torsion Spring Trim	Full Enclosure with Torsion Spring Trim	Full Enclosure with Hinged Locking Door	Full Enclosure with Hinged Locking Door	Large Full Enclosure with Hinged Locking Door
Application	Cloud Ceiling Easy Access	Full Ceiling Easy Access	Full Ceiling Secure Access	Full Ceiling Secure Access	Full Ceiling Secure Access
What Is Above Ceiling	Open Bracket	Full Enclosure	Full Enclosure	Full Enclosure	Full Enclosure
What Is Below Ceiling	Torsion-Spring Trim	Torsion-Spring Trim	Hinged Door	Hinged Door	Continuously Hinged Door
Door/Trim Options	Solid Cover (shown), AP-Specific Trim (available)	Solid Cover (available) AP-Specific Trim (shown)	AP-Specific Door	Dome Door	Dome Door (available) RU-Specific Door (shown)
Physical Security	N/A	N/A	Keyed Lock	Keyed Lock	Keyed Lock
Use in Plenum Ceiling	No	Yes	Yes	Yes	Yes
Addresses Medical Facility Infection Control Risk Assessment (ICRA) Concerns	No	Yes	Yes	Yes	Yes
Backbox size (approx.)	14" x 14" x 3"	14" x 14" x 3"	18" x 18" x 3"	18" x 18" x 3"	22" x 22" x 4.5" or 6.5"
Material	Metal Solid Cover is Plastic	Metal Solid Cover is Plastic	Metal	Metal Dome is Plastic	Metal Dome is Plastic
Building Attachment	Hanger Wire Cutout In Ceiling Tile	Hanger Wire Cutout In Ceiling Tile	Hanger Wire Replaces Ceiling Tile	Hanger Wire Replaces Ceiling Tile	Threaded Rod Replaces Ceiling Tile



Recessed Hard Ceiling Solutions

Recess an enclosure inside a ceiling or wall cavity to flush-mount or hide your access points, secure network connections and easily upgrade to future APs.



Recessed Wall Solutions

	In-Plane 1442	In-Plane 1443	Wi-Tile® 1075	In-Plane 1018	In-Plane 1019-RM
Description	Full Enclosure with Torsion Spring Trim	Full Enclosure with Torsion Spring Trim	Full Enclosure with Hinged Locking Door	Full Enclosure with Snap-On Cover	Large Full Enclosure with Snap-On Cover
Application	Existing Construction Easy Access	New Construction Easy Access	Existing Construction Secure Access	Existing Construction Secure Access	Existing Construction Secure Access
What Is Above Ceiling	Full Enclosure	Full Enclosure	Full Enclosure	Full Enclosure	Full Enclosure
What Is Below Ceiling	Torsion Spring-Trim	Torsion-Spring Trim	Continuously Hinged Door	Snap-On Cover	Snap-On Cover
Door/Trim Options	Solid Cover (available) AP-Specific Trim (shown)	Solid Cover (shown) AP-Specific Trim (available)	Dome Door (shown) AP-Specific Door available)	Full Cover (only)	Full Cover (only)
Physical Security	N/A	N/A	Keyed Lock	Secures with Screws	Secures with Screws
Use in Plenum Ceiling	Yes	Yes	Yes	N/A	N/A
Addresses Medical Facility Infection Control Risk Assessment (ICRA) Concerns	Yes	Yes	Yes	N/A	N/A
Backbox size (approx.)	14" x 14" x 3"	14" x 14" x 3"	14" x 14" x 3"	10" x 10" x 3"	12" x 12" x 3"
Material	Metal Solid Cover is Plastic	Metal Solid Cover is Plastic	Metal Dome is Plastic	Plastic	Plastic
Building Attachment	Hanger Wire and Toggle Cutout In Ceiling Tile	Hanger Wire and Bracket Cutout In Ceiling Tile	Hanger Wire and Clamp Cutout In Ceiling Board	Toggle Hardware Cutout In Wall	Toggle Hardware Cutout In Wall



Open Ceiling Solutions

Secure and suspend your access points and associated network connections from high, open ceilings. Also available in black finish with accessory AP covers.



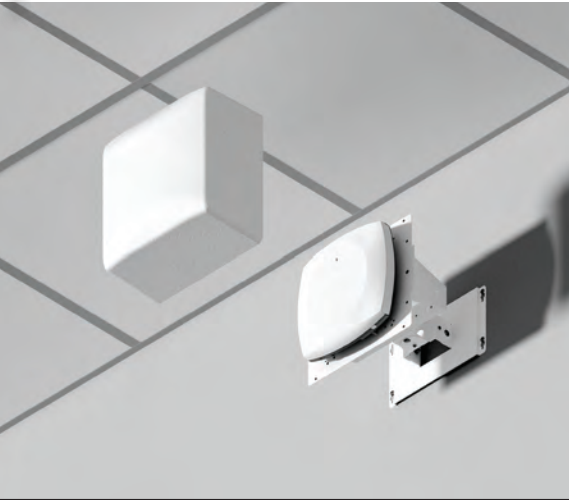
Warehouse and Industrial Solutions

	Hi-Point 1008	Hi-Point 900-HC	Hi-Point 905	M-Frame 1312
Description	Right Angle Bracket Attach to Wall or Truss	Hanging Conduit Mount with Cable Compartment	Hanging Conduit Mount with Cable Compartment	Mounting Frame with Multiple Mounting Methods
Application	Attach APs to Overhead Beams and Trusses	Attach APs to Hanging Conduit and Concealed Cables	Secure APs over Junction Boxes or Hanging Conduit	Suspend APs and Antennas from high ceilings
Includes T-Bar Bracket	Yes	Yes	No	Yes
Access Point Mount	Universal	Universal	Dome Door (available) AP-Specific Door (shown)	Universal
1-inch Antenna Post	No	No	No	On Accessory Brackets
Physical Security	N/A	Spring Plunger	Keyed Lock	N/A
Panel size (approx.)	7" x 8.4"	7" x 7"	11" x 11" 13" x 13"	11.5" x 11.6"
Material	Metal	Metal	Metal	Metal
Building Attachment	Beam Clamps (included) Clamps to Beam or Truss	Hanging Conduit Attaches to 1-in or 3/4-in trade size conduit	Optional Hanging Conduit Accessory for 1-in or 3/4-in Trade Size Conduit	Overhead Beam or Truss Attaches to 30'L suspension wire Optional accessories for beam, post, wall attachment



Right Angle Mounting Solutions

Correctly orient access points and antennas when surface-mounted along perimeter walls, walkways, mezzanines or balconies.



Directional Mount

	H-Plane 1008	H-Plane 1006	H-Plane 1011	H-Plane 1007	Hi-Bar 1013
Description	Basic Mounting Bracket Universal Mounting	Basic Mounting Bracket AP-Specific	Bracket with Locking Cover Universal Mounting	Enclosure with Locking Cover AP-Specific	Wall Mount Bracket With Articulating Arm
Application	Wi-Fi APs Easy Access	Wi-Fi APs, DAS Antennas Easy Access	Wi-Fi APs Secure Access	Wi-Fi APs, DAS Antennas Secure Access	Position APs or Antennas for Aisles and Large Rooms
Trim Options	N/A	N/A	N/A	Dome Trim AP-Specific Trim Antenna Trim	N/A
Includes T-Bar Bracket	Yes	N/A	Yes	N/A	Yes
Access Point Mount	Universal	AP-Specific	Universal	AP-Specific	Cisco
1-inch Antenna Post	No	Yes	No	Use Antenna Trim	Yes
Physical Security	N/A	N/A	Locking Option	Keyed Lock	N/A
Panel size (approx.)	7" x 8.4"	Varies with AP	7" x 9"	13.5" x 13.5"	11.7" x 10"
Material	Metal	Metal	Metal	Plastic Metal Trim	Metal Plastic Cover
Building Attachment	Wall Mount Place Over Network Outlet	Wall Mount Place Over Network Outlet	Wall Mount Place Over Network Outlet	Wall Mount Place Over Network Outlet	Articulating Arm Adjusts Up/Down and Left/Right



Surface Mounting Solutions

Protect and secure surface-mounted access points and network connections and simplify future upgrades.



	Hi-Point 905	Hi-Bar 1014	Hi-Bar 1015	Hi-Bar 1016
Description	Hinged Box Mount with AP Compartment	Smooth Enclosure with Screw-On Cover	Smooth Enclosure with Hinged Locking Door	Larger Smooth Enclosure with Hinged Locking Door
Application	Secure APs over Junction Box or Hanging Conduit	Secure APs in Healthcare Applications	Secure APs over Junction Box	Secure APs, Antennas over Junction Box
Includes T-Bar Bracket	No	Yes	Yes	Yes
Access Point Mount	AP-Specific	Cisco	Cisco	Cisco
Cover/Door Options	N/A	Solid or Frosted	Solid or Frosted	Solid or Frosted
Physical Security	Keyed Lock	Tamper-Resistant Screws	Keyed Lock	Keyed Lock
Panel size (approx.)	11" x 11" 13" x 13"	8.7" x 10.5" x 3.0"	10.6" x 8.6" x 3.0" 13.3" x 12.2" x 3.5"	17.4" x 10.5" x 4.5"
Material	Metal	Plastic	Plastic	Plastic
Building Attachment	Surface-Mount Place Over Network Outlet Accessory for 1-in or 3/4-inTrade Size Conduit	Surface-Mount Fully Sealed Enclosure	Surface-Mount Place Over Network Outlet Accessory for 1-inTrade Size Conduit	Surface-Mount Place Over Network Outlet

Environmental and NEMA Solutions

Protect and secure outdoor access points, network and power connections in wet and dirty environments.



Skybar
1020



Skybar
1022



Skybar
1021



Skybar
1024



Skybar
1026

Description	Smooth Enclosure with Screw On Lid	Smooth Enclosure with Screw On Lid	Smooth Enclosure with Screw On Lid	Hinged Cover Enclosure with Padlock Hasp	Hinged Cover Enclosure with Padlock Hasp
Application	Secure Equipment in Dirty or Wet Environments	Secure Equipment in Dirty or Wet Environments	Secure Equipment in Dirty or Wet Environments	Secure Equipment in Dirty or Wet Environments	Secure Equipment in Dirty or Wet Environments
NEMA Rating	NEMA 4X/4/12	NEMA 4X/4/12	NEMA 4X/4/12	NEMA 4X/4/12	NEMA 4X/4/12
Includes Back Panel	Model 1020-12125 Only	Yes	Yes	Yes	Yes
Includes T-Bar Bracket	Yes	Yes	Yes	Yes	No
Access Point Mount	Removable Back Panel	Removable Back Panel	Removable Back Panel	Removable Back Panel	Removable Back Panel
Panel Size (approx.)	12.5” x 12.5”	8.5” x 12.4”	10.5” x 14.4”	3 Sizes	8 Sizes
Cover/Door Options	Opaque or Translucent	Opaque or Translucent	Opaque	Opaque or Translucent	Opaque or Translucent
Physical Security	Tamper Resistant Screws	Tamper Resistant Screws	Tamper Resistant Screws	Padlock Hasp	Padlock Hasp
Material	Polycarbonate	Polycarbonate	Polycarbonate	Polycarbonate	Polycarbonate
Building Attachment	Direct Attachment Integrated Mounting Flange	Direct Attachment Detachable Mounting Tabs	Direct Attachment Detachable Mounting Tabs	Direct Attachment Detachable Mounting Tabs	Direct Attachment Integrated Mounting Flange

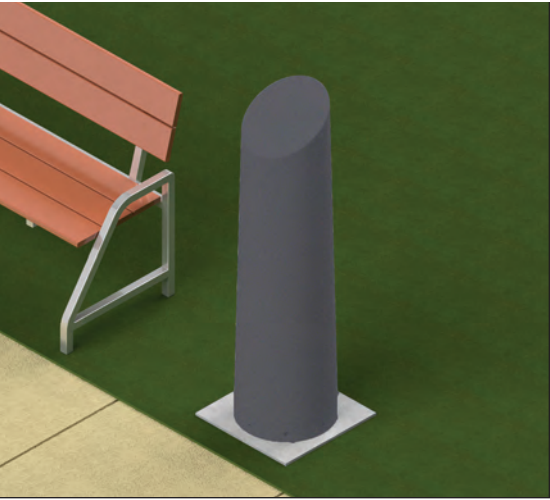
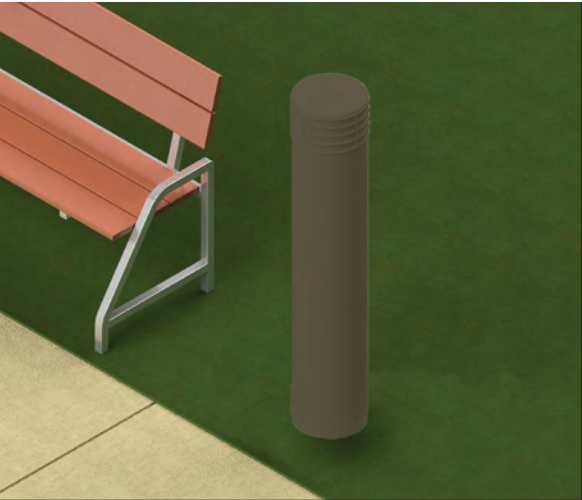


Environmental and NEMA Solutions

Large Venue

Wireless Bollards

Extend network coverage outdoors across the campus and in public spaces, parks, stadiums and transportation terminals.



	Skybar 3001	Skybar 3009	NetPoint 3032	NetPoint 3033	NetPoint 3036
Description	Large Hinged AP and Antenna Cover	Under Seat AP Cover	Standard Bollard	Large Bollard	Large Bollard
Application	Enterprise Campus	Stadium, Large Venues	Enterprise Campus	Enterprise Campus	Street Furniture
Style	N/A	N/A	Beveled and Lighthouse	Beveled	Beveled
NEMA Rating	NEMA 3R	NEMA 3R	NEMA 3R	NEMA 3R	NEMA 3R
Equipment Mounting	Back Panel	Angled Bracket	Flat and L-Bracket	Flat and L-Bracket	Flat and L-Bracket
Physical Security	Secures With Screws	Secures With Screws	Tamper Resistant Screws	Tamper Resistant Screws	Keyed Lock
Panel Size (approx.)	21”H x 14”W x 11”D	8”H x 11”W x 10”D	11.5” Diameter x 58”H 11.5” Diameter x 60”H	12.5” Diameter x 72”H	14” Diameter x 62”H
Custom Height	N/A	N/A	Yes	Yes	No
Custom Color	N/A	N/A	Yes	Yes	Yes
Material	Plastic	Fiberglass Metal Mounting Bracket	Polyethylene Metal Base	Polyethylene Metal Base	Fiberglass Metal Base
Building Attachment	Surface Attachment	Floor Attachment	Poured Concrete Base	Poured Concrete Base	Poured Concrete Base

Finishing Touches

Access Point Covers – Conceal access points with detachable covers that can be painted to match the environment

Accessories – Wall angle, pole mount and antenna mount brackets, cable grommets and installation kits for bollards

Retrofit Doors and Trims (Future Upgrades) – AP-Specific doors and trims allow you to deploy the next generation of APs into existing enclosures



*Cover used with
H-Plane 1011 Series*



Installation Kits



Replacement Doors

About Oberon

Oberon, a division of Chatsworth Products (CPI), is a leading designer and manufacturer of enclosures and mounting solutions for wireless access points, antennas, and other networking equipment. Trusted by thousands of organizations worldwide, Oberon solutions help ensure optimal wireless performance while preserving the integrity and aesthetics of the environment.

Getting Started

Let us help you select products for your project.

Contact Oberon:

877-867-2312

sales@oberonwireless.com

Browse product information:

oberonwireless.com

Search by Access Point:

<https://www.chatsworth.com/en-us/oberon-solutions-finder>